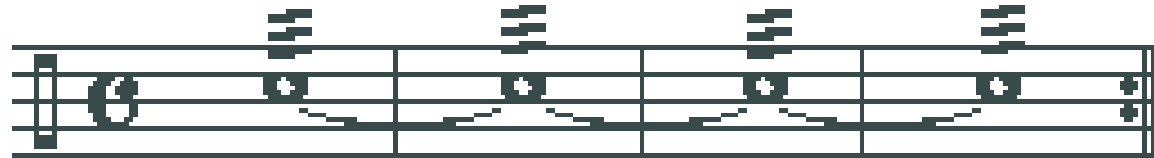


1. The Long Roll (or Double-Stroke Roll, or Buzz Roll)



2. The Five-Stroke Roll



3. The Seven-Stroke Roll



4. The Flam



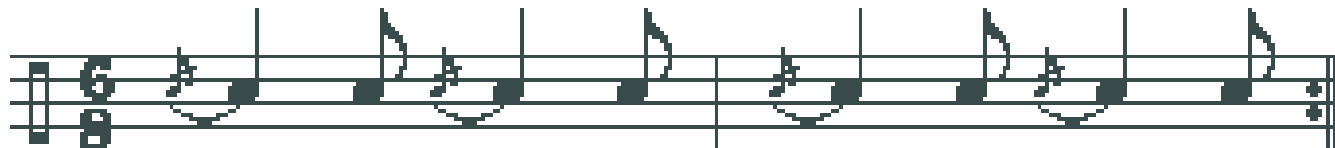
L R R L L R R L L R R L L R R L
R L L R R L L R R L L R R L L R

5. The Flam Accent #1 (pattern #1)



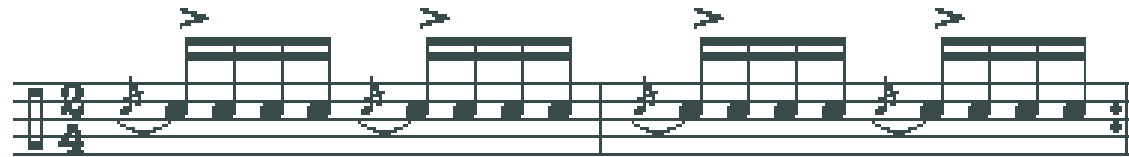
L R L R R L R L L R L R R L R L
R L R L L R L R R L R L L R L R

The Flam Accent #1 (pattern #2)



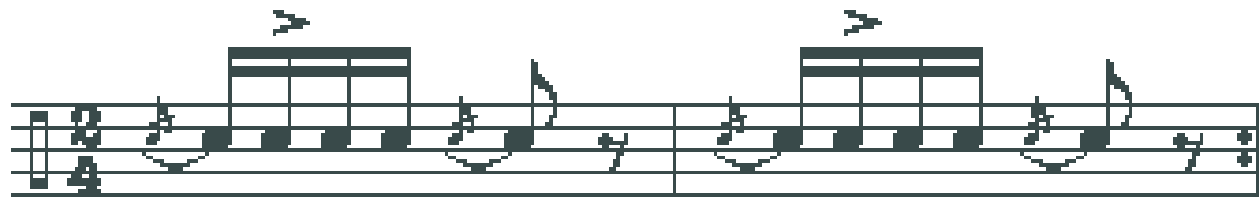
L R R L L L R R L L
R L L L R R R L L L R R
L R R L L R L L L R R

6. The Flam Paradiddle



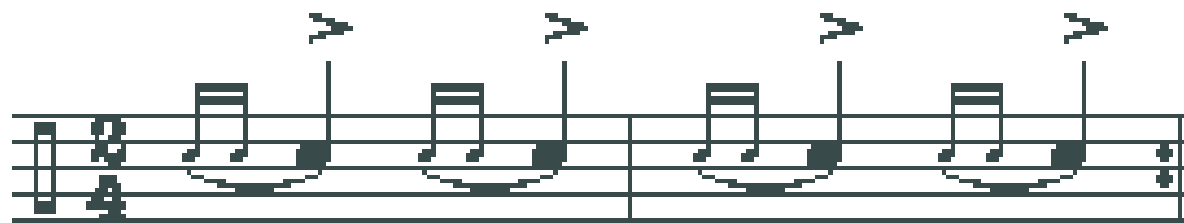
L R L R R R L R L L L R L R R R L R L L L
R L R L L L R L R R R L R L L L R L R R

7. The Flamacue



L R L R L L R R L R L L L R L L
R L R L R R L L L R L R R L R

8. The Ruff




L L R R R L L L R R R L L L R
R R L L L R R R L L L R

9. The Single Drag




R LLR L RRL R LLR L RRL
 L RRL R LLR L RRL R LLR

10. The Double Drag



LLR LLR L RRL RRL R
 RRL RRL R LLR LLR L

11. The Double Paradiddle



LR LR LL RL RL RR
 RL RL RR LR LL LL

12. The Single Ratamacue



LLR L R L RRL R L R
 RRL R L R LLR L R L

13. The Triple Ratamacue



LLR LLR LLR L R L LLR LLR LLR L R L
 RRL RRL RRL R L R RRL RRL RRL R L R
 LLR LLR LLR L R L RRL RRL RRL R L R

14. The Single-Stroke Roll



RLRL RLRLRLRL RLRLRLRLRLRLRLRLRLRL
 LRLR LRLRLRLR LRLRLRLRLRLRLRLRLR

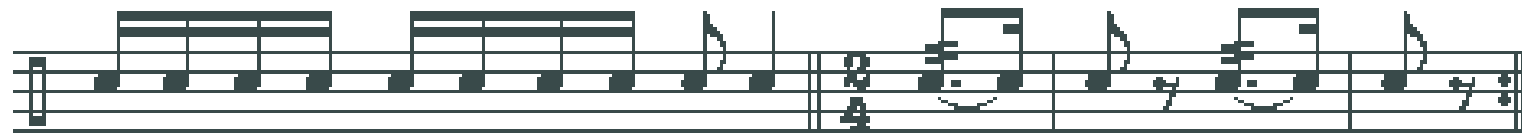
15. The Nine-Stroke Roll



Musical notation for 'The Nine-Stroke Roll' in 2/4 time. The first measure contains a sequence of nine eighth notes: L, L, R, R, L, L, R, R, L. The second measure contains a sequence of nine eighth notes: R, R, L, L, R, R, L, L, R. The notation includes a treble clef, a key signature of one flat, and a double bar line between the two measures.

L L R R L L R R L
R R L L R R L L R


16. The Ten-Stroke Roll



Musical notation for 'The Ten-Stroke Roll' in 2/4 time. The first measure contains a sequence of ten eighth notes: L, L, R, R, L, L, R, R, L, R. The second measure contains a sequence of ten eighth notes: R, R, L, L, R, R, L, L, R, L. The notation includes a treble clef, a key signature of one flat, and a double bar line between the two measures.

L L R R L L R R L R
R R L L R R L L R L

17. The Eleven-Stroke Roll



Musical notation for 'The Eleven-Stroke Roll' in 2/4 time. The first measure contains a sequence of eleven eighth notes: L, L, R, R, L, L, R, R, L, L, R. The second measure contains a sequence of eleven eighth notes: R, R, L, L, R, R, L, L, R, R, L. The notation includes a treble clef, a key signature of one flat, and a double bar line between the two measures.

L L R R L L R R L L R
R R L L R R L L R R L

The Flam Tap (notation #2)



L R R R L L L R R R L L
R L L L R R R L L L R R

The Flam Tap (notation #3)



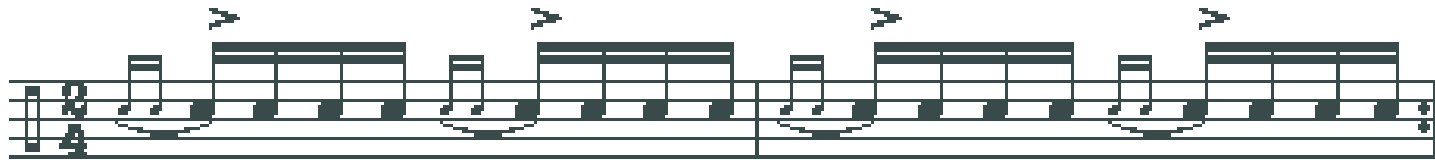
L R R R L L L R R R L L
R L L L R R R L L L R R

21. The Single Paradiddle



L R L L R L R R L R L L R L R R
R L R R L R L L R L R R L R L L

22. The Drag Paradiddle #1



LLR L R RRR L R L L LLR L R RRR L R L L
RRL R L L LLR L R R RRL R L L LLR L R R

23. Drag Paradiddle #2



R LLR LLR L R R L RRL RRL R L L
L RRL RRL R L L R LLR LLR L R R

24. The Flam Paradiddle-Diddle (notation #1)



L R L R R L L L R L R R L L
R L R L L R R R L R L L R R

The Flam Paradiddle-Diddle (notation #2)

Musical notation for 'The Flam Paradiddle-Diddle (notation #2)'. It consists of a single staff in 4/4 time. The melody is: G4 (quarter), A4 (quarter), B4 (quarter), C5 (quarter), B4 (quarter), A4 (quarter), G4 (quarter), F#4 (quarter), E4 (half). The notation includes a treble clef, a 4/4 time signature, and a key signature of one sharp (F#4). Below the staff are two lines of rhythmic notation: R R L L R R L and L L R R L L R.

R R L L R R L
L L R R L L R

25. The Ratatap (pattern #1)

Musical notation for '25. The Ratatap (pattern #1)'. It consists of a single staff in 4/4 time. The melody is: G4 (quarter), A4 (quarter), B4 (quarter), C5 (quarter), B4 (quarter), A4 (quarter), G4 (quarter), F#4 (quarter), E4 (half). The notation includes a treble clef, a 4/4 time signature, and a key signature of one sharp (F#4). Below the staff are two lines of rhythmic notation: L L R L R R R L R L and R R L R L L L R L R.

L L R L R R R L R L
R R L R L L L R L R

The Ratatap (pattern #2)

Musical notation for 'The Ratatap (pattern #2)'. It consists of a single staff in 4/4 time. The melody is: G4 (quarter), A4 (quarter), B4 (quarter), C5 (quarter), B4 (quarter), A4 (quarter), G4 (quarter), F#4 (quarter), E4 (half). The notation includes a treble clef, a 4/4 time signature, and a key signature of one sharp (F#4). Below the staff are two lines of rhythmic notation: R L L R L R L L R L and L R R L R L R R L R.

R L L R L R L L R L
L R R L R L R R L R

26. The Double Ratamacue

The image shows a musical score for 'The Double Ratamacue' in 2/4 time. It consists of two measures. The first measure contains a sequence of notes: a quarter note, a quarter note, a triplet of eighth notes, and a quarter note. The second measure contains a sequence of notes: a quarter note, a quarter note, a triplet of eighth notes, and a quarter note. The triplet in each measure is indicated by a bracket with the number '3' above it. Below the staff, the corresponding rhythmic patterns are listed in two rows.

LLR LLR L R L RRL RRL R L R
RRL RRL R L R LLR LLR L R L