



ENCLOSED PUSH BUTTONS



ENCLOSED PUSH BUTTONS



Enclosed
Push buttons

Enclosed Push buttons

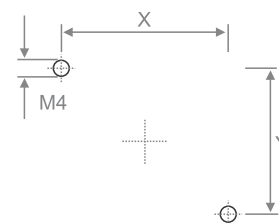
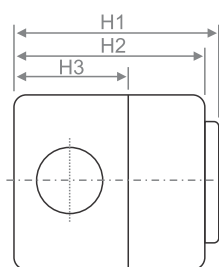
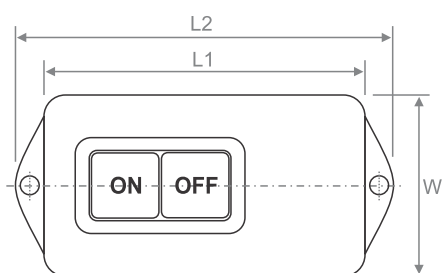
■ General features

- ▶ Enclosed push buttons for 10, 15, 30 Amps, 2 poles or 3 poles, 380 VAC, 50 Hz
- ▶ Best economic solution for connecting/disconnecting various loads of 1 or 3 phase, up to 30 Amps.
- ▶ Suitable for resistive loads, motor loads, homes, workshops, lighting switches, and so on.
- ▶ ISIRI standard in AC21 utilization category (No. 4835-1 & 4835-3) and CE
- ▶ Two glanded areas for cable on two sides
- ▶ Proper dimensions and easy to install
- ▶ Enclosure made of fiber reinforced polyamide and resistant to flames
- ▶ No relays used
- ▶ IP54 enclosure protection against dust and water
- ▶ Double contacts using bimetal (Copper-Silver alloy) contact rivets



Technical Specifications:

All technical specifications, mechanical drawings, ordering codes are included below:



Part No.		380VAC AC21	Dimensions(mm)							
2 Pole	3 Pole		L1	L2	W	H1	H2	H3	X	Y
PB2P10	PB3P10	10A	86	102	48	51	47	24	70	30
PB2P15	PB3P15	15A	86	102	54	57	53	30	70	36
PB2P30	PB3P30	30A	103	123	63	58	54	32	85	43

Enclosed Push buttons