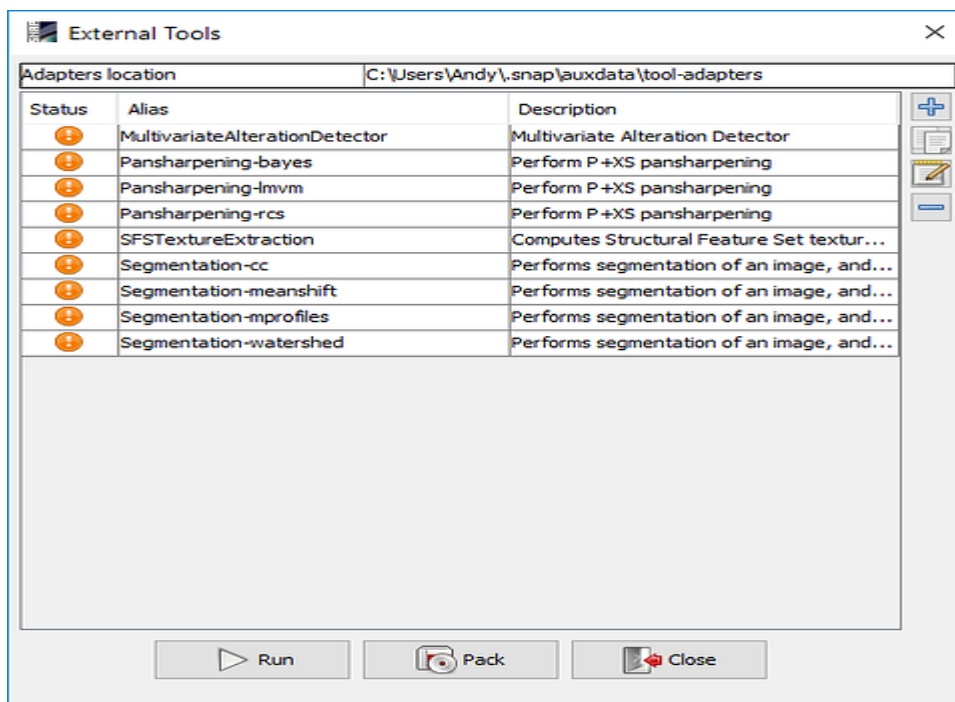


Sen2cor 2.4.0 on SNAP 6.0

1. Deletion of all sen2cor plugins (if available)

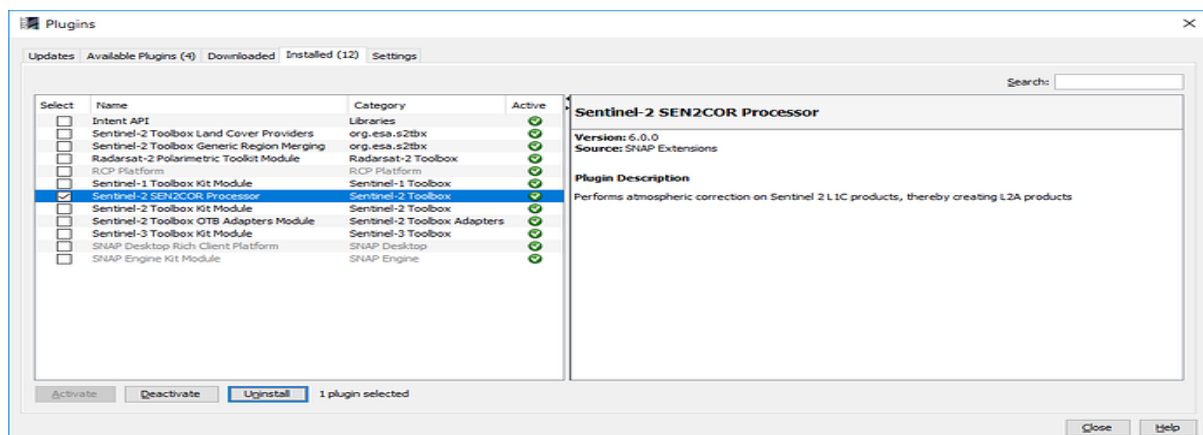
Tools > Manage external Tools

Make sure that sen2cor is no longer listed. Remove it with the minus sign.



Tools > Plugins

Uninstall all sen2cor versions available, even if 2.4 is listed under SNAP 6. I experienced that there are some old references which might still interfere with that. So select sen2cor and click "uninstall". Then restart SNAP.



2. Delete all sen2cor folders from your system, especially under

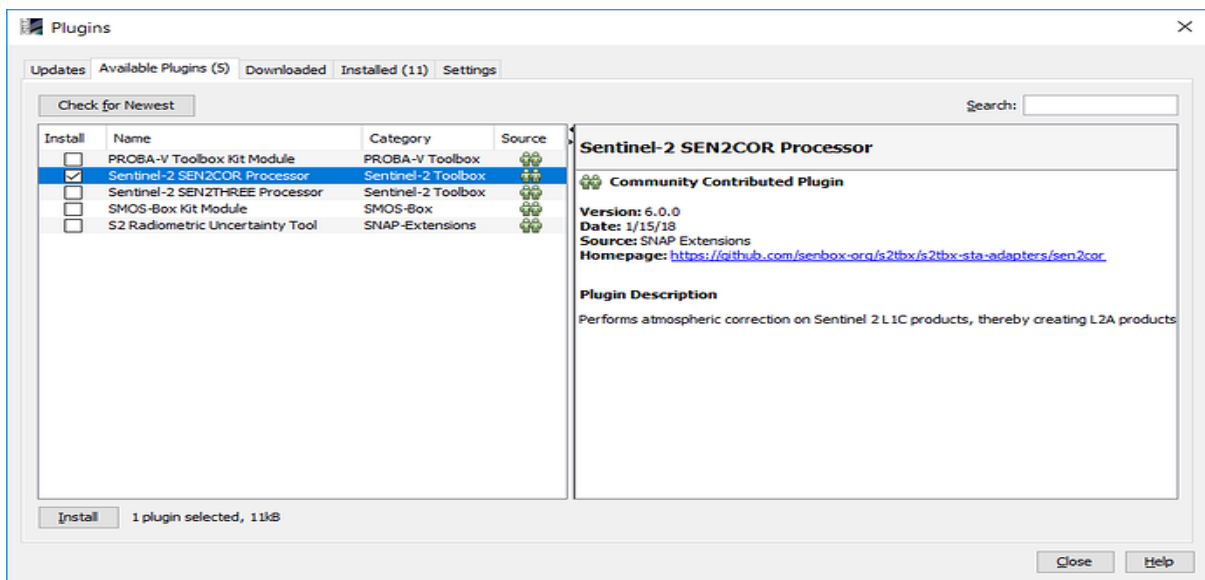
- C:\users\yourname\documents\sen2cor
- C:\users\yourname.snap\auxdata\Sen2Cor-2.4.0-win64 (this is hidden, you have to display all data first)

3. Perform a clean new installation of sen2cor 2.4 within SNAP 6

Tools > Plugins

Select sen2cor under "Available plugins" and install. Restart SNAP upon request.

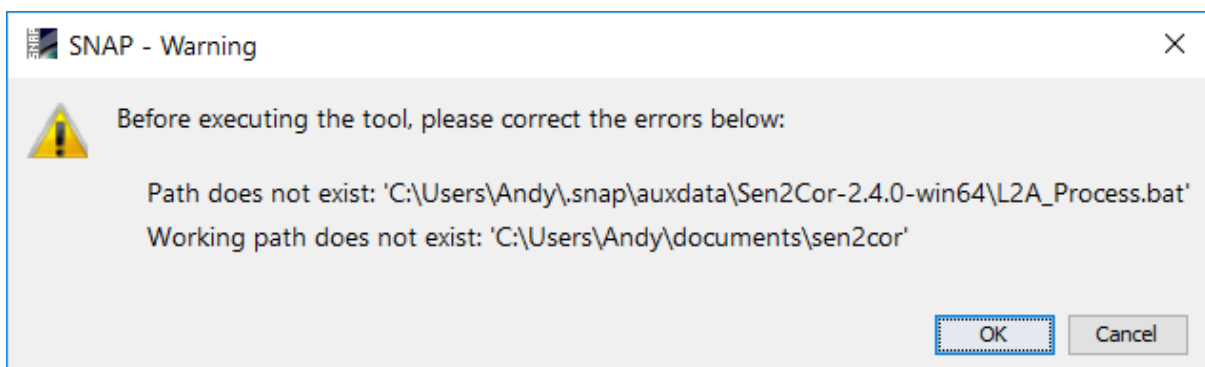
در این قسمت چنانچه فایل مورد نظر دانلود نشد از فیلتر شکن استفاده کنید.



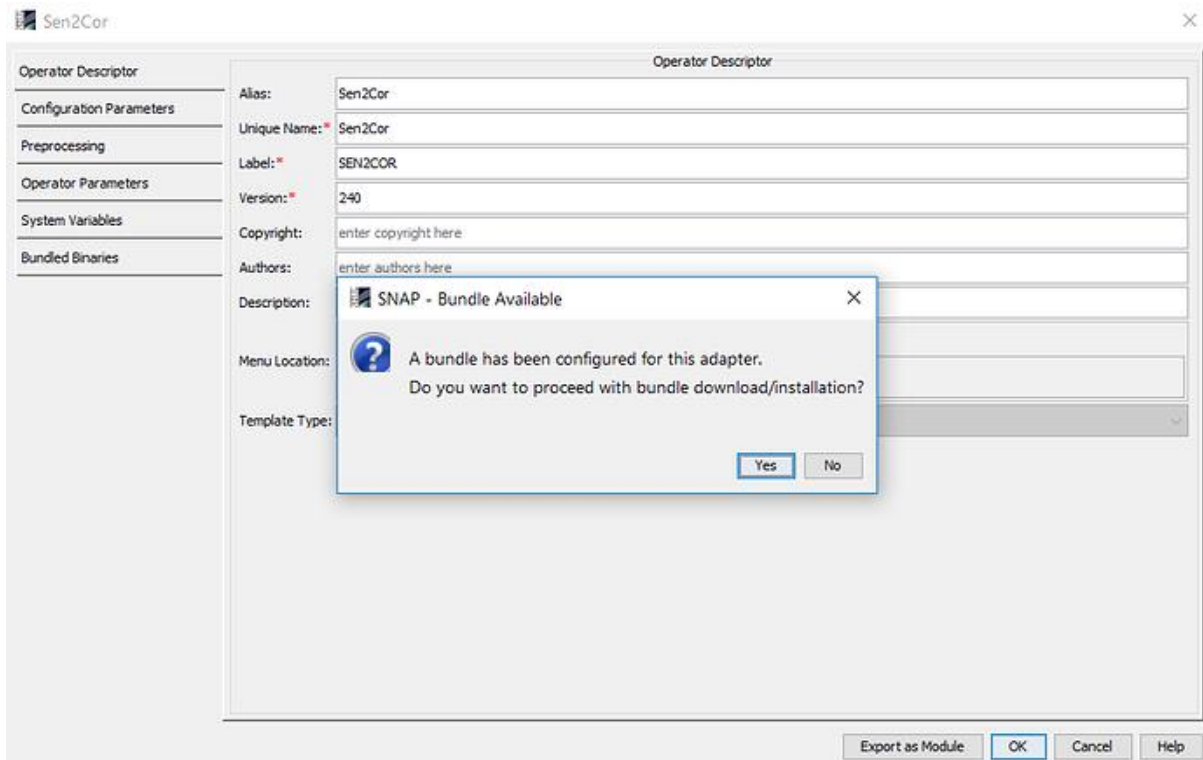
4. Run sen2cor for the first time

Optical > Thematic Land Processing > sen2cor

It will probably not work yet but give you a message:

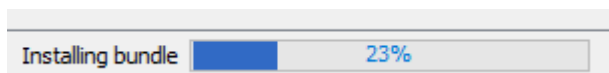


This is no wonder because none of these folders does exist. Hit "OK" and you are redirected to the plugin settings again. You are asked if you want to install the bundle for SNAP 6. Confirm with "Yes". This might then take some while because sen2cor is freshly downloaded and integrated.



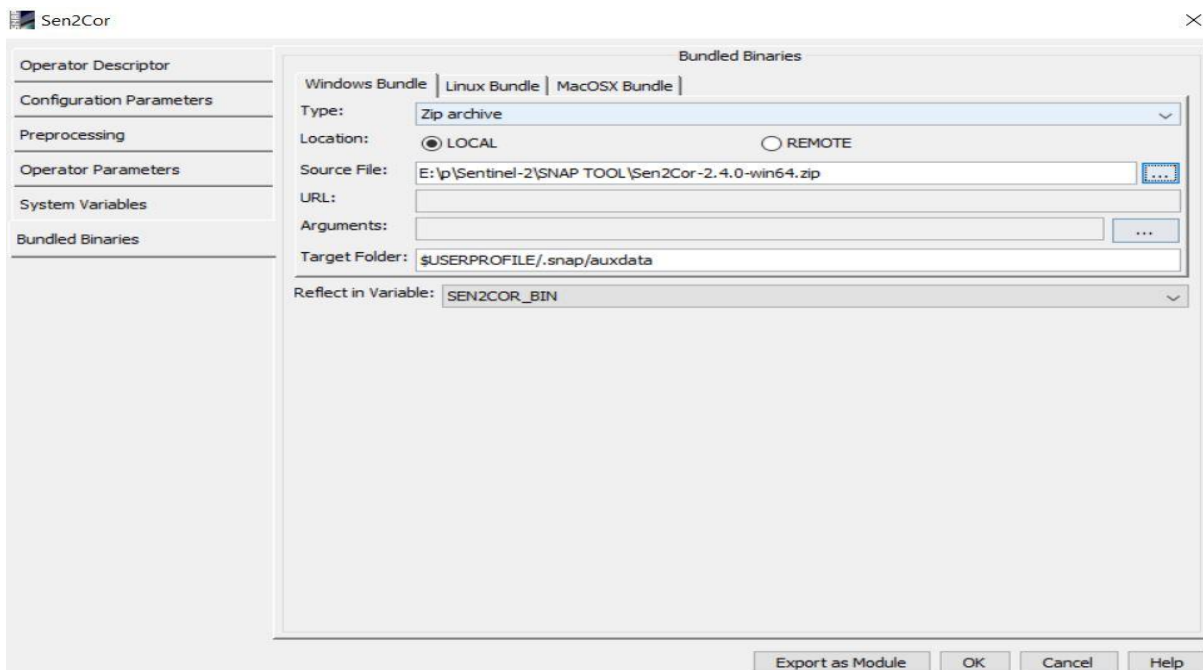
در این قسمت برای دانلود فایل مورد نظر نیاز به فیلترشکن داریم.

Progress bar at the bottom.

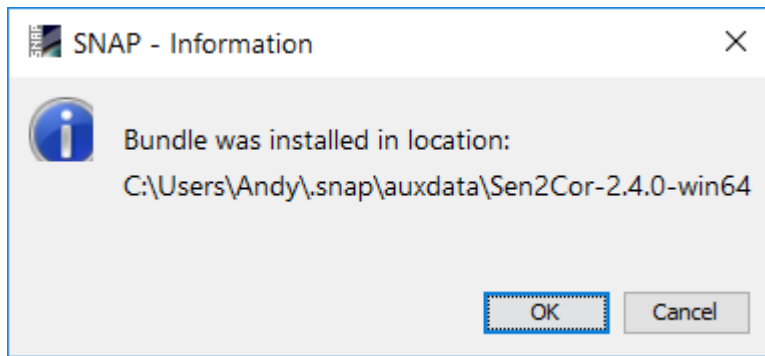


برای راحتی کار و عدم نیاز به فیلترشکن می‌توانید فایل sen2cor رو مستقیم از آدرس زیر بدون فیلتر دانلود کنید و در ادامه به صورت زیر به برنامه معرفی و نصب کنید.

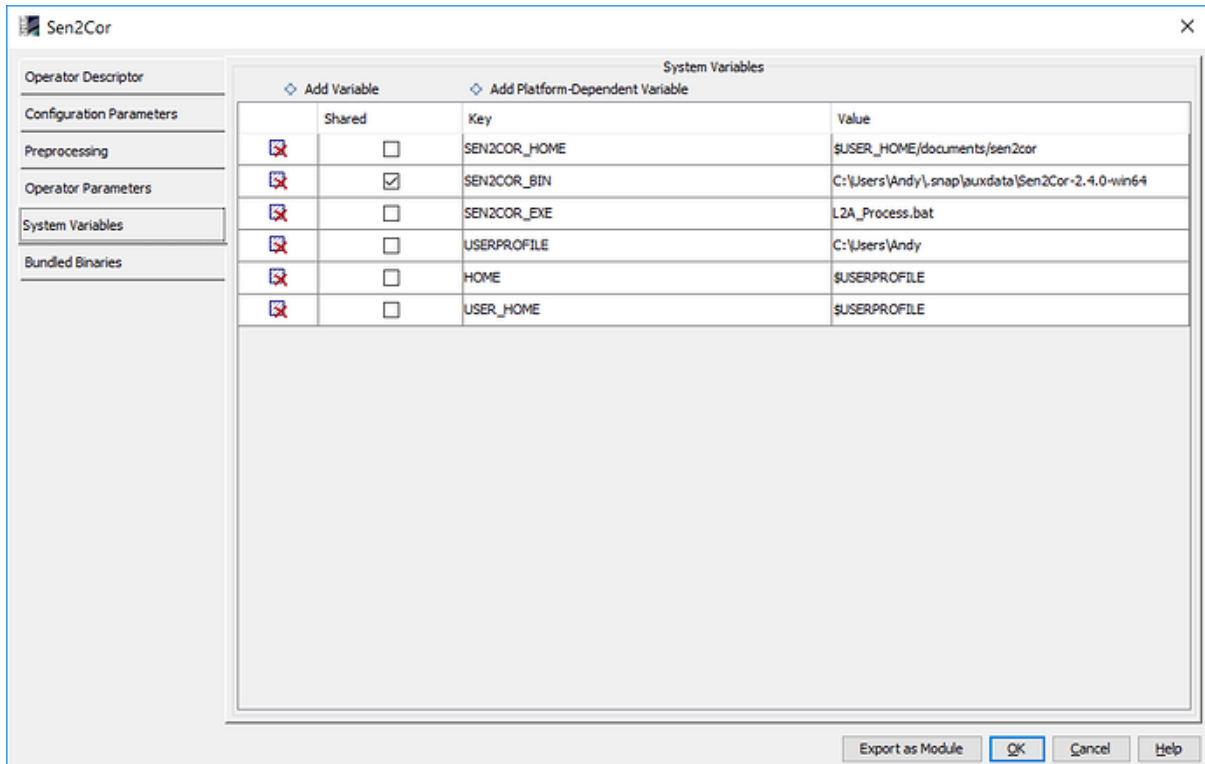
[Download SEN2COR](#)



After completion, you get a message - remember this path:

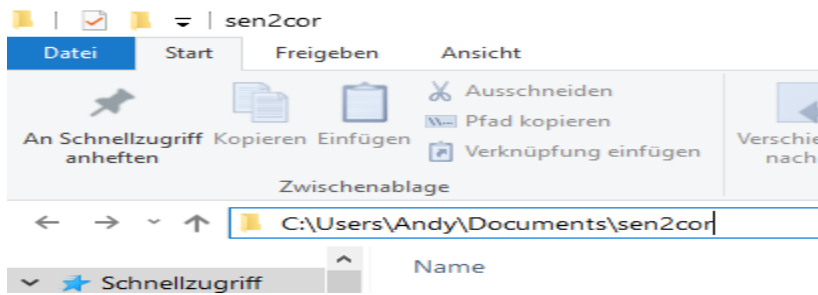


The System variable SEN2COR_BIN should now point to this directory, however SEN2COR_HOME doesn't exist yet (as we deleted the folder in step 1).



5. Create SEN2COR_HOME

Create a new folder at this location (or any other, but make sure it exactly matches the SEN2COR_HOME variable).

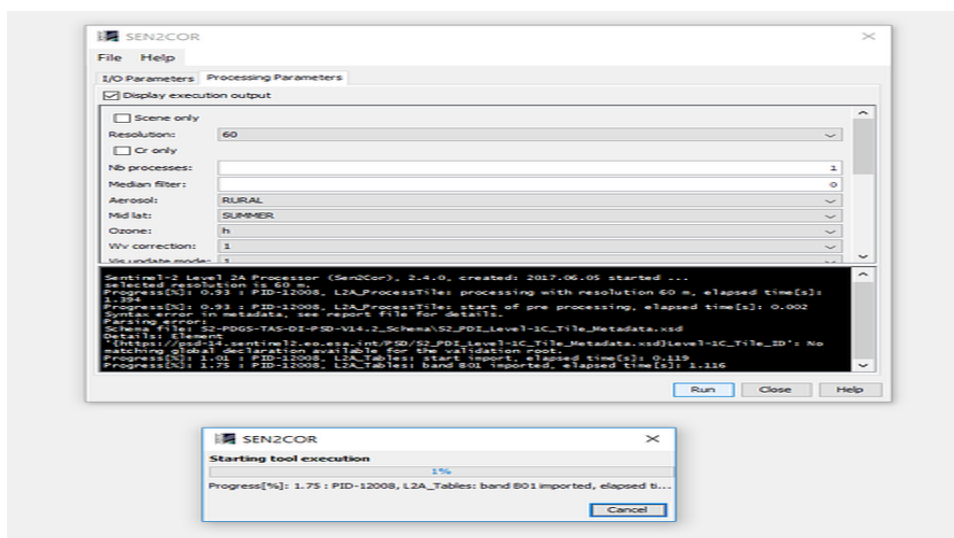
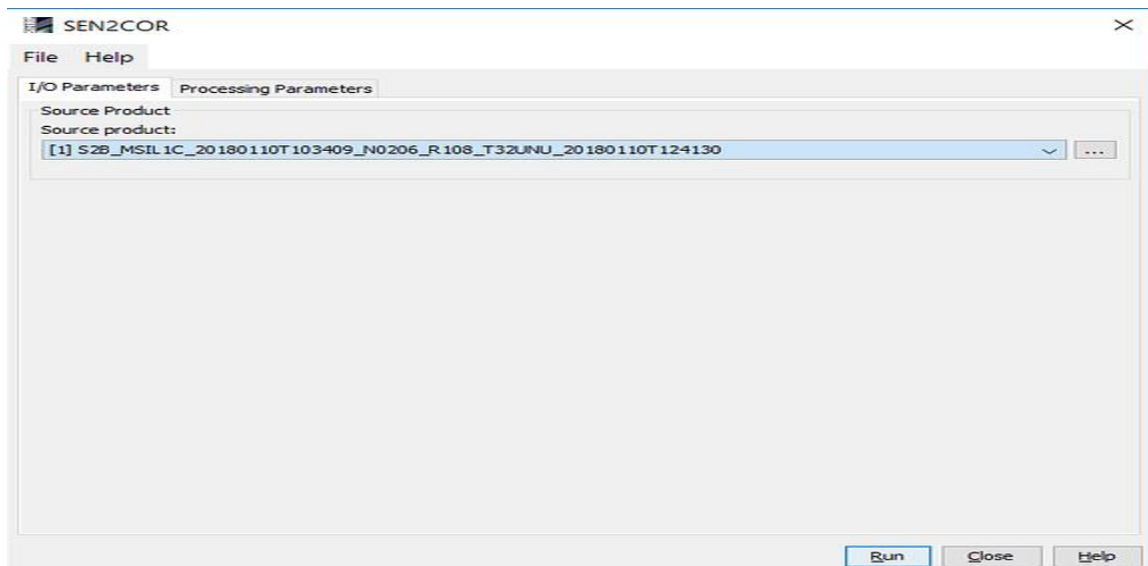


6. Run sen2cor

Optical > Thematic Land Processing > sen2cor

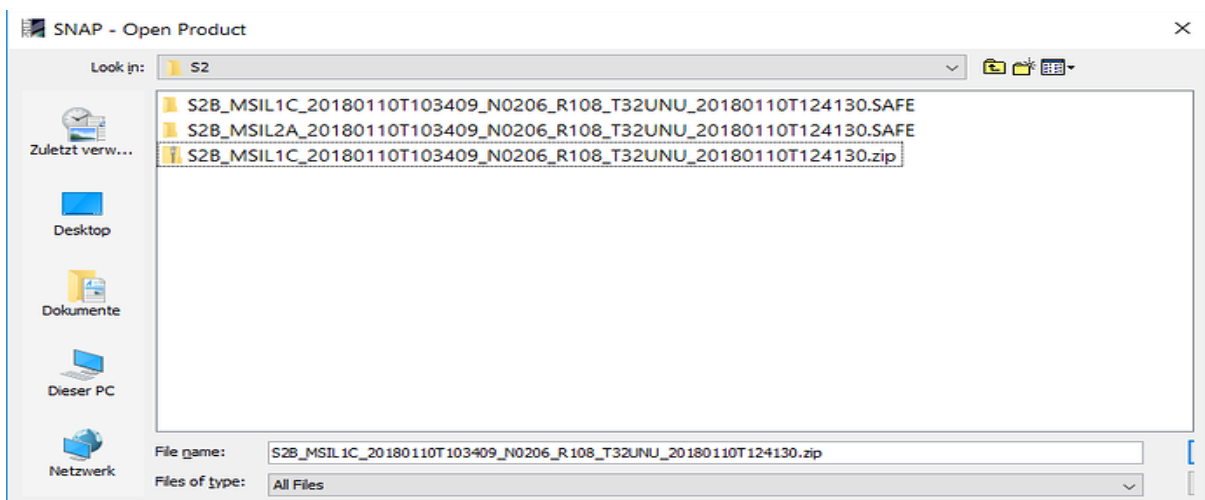
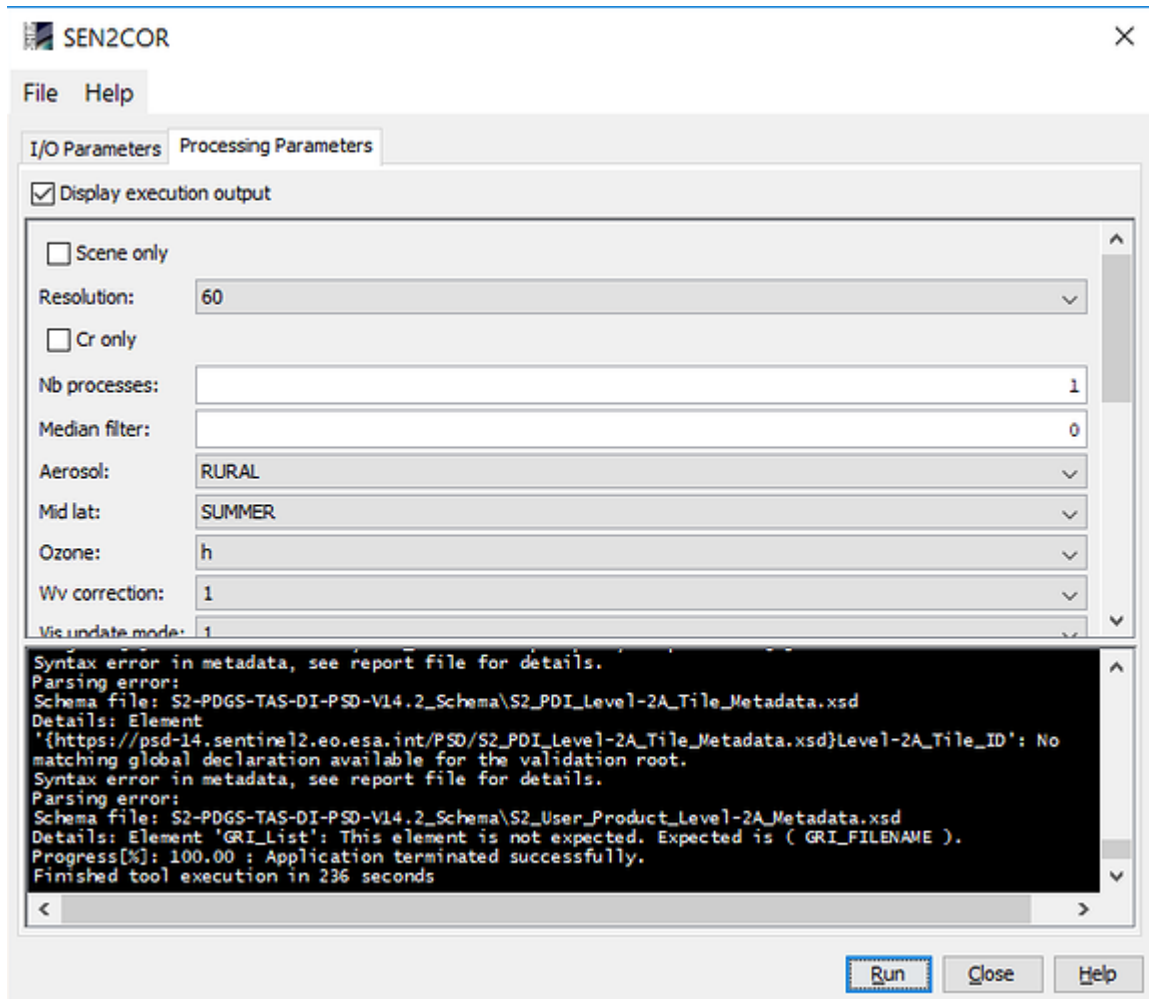
Make sure you select a Level1C product of Sentinel-2 (MSIL1C) and use it as input for the tool.

In the "Processing Parameters" tab, enable "Display execution output" to get information on the progress of the tool and possible errors.

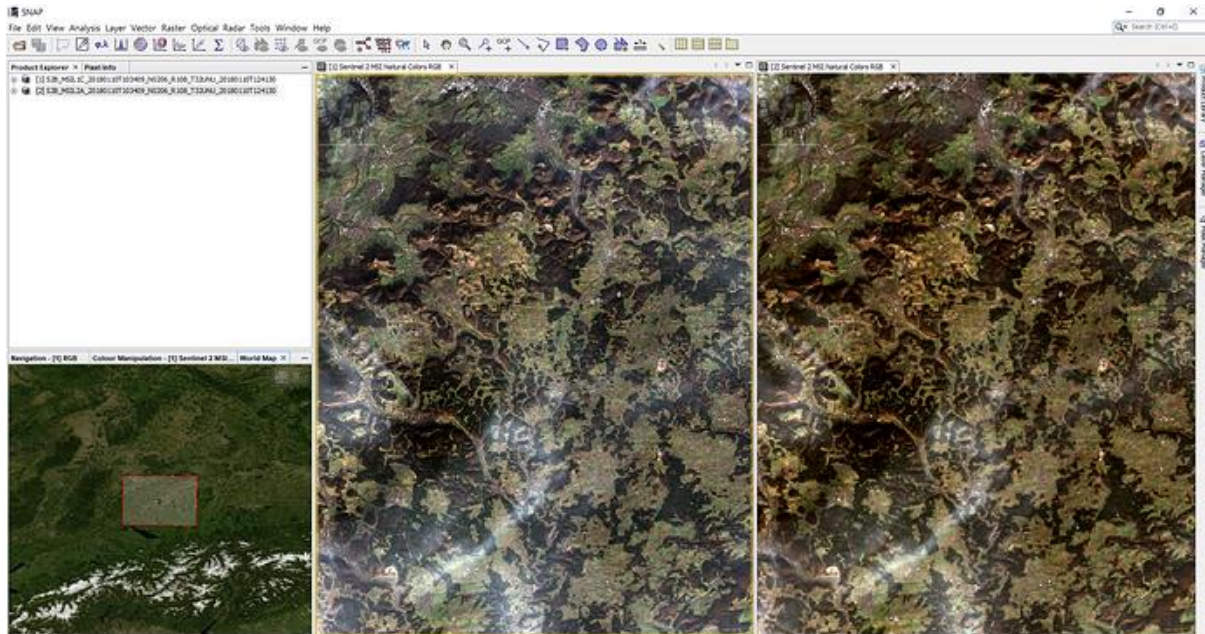


7. Open the result

After finishing the target product was written **in the same folder as your input data**.



S2_MSIL1C represents the product before correction, MSIL1A is the corrected product. Open it with the MTD_MSIL2A.xml file. Left: Level-1C, right Level-2A:



A note on performance: As you see, sen2cor doesn't work wonders. Slight haze can be removed but no thick layers of clouds, of course. The core functionality is the conversion into reflectance and the reduction of topographic effects. The new plugin allows to play around with the parameters directly in SNAP, aerosols for example.

<http://forum.step.esa.int/t/sen2cor-2-4-0-on-snap-6-0/8659/2>

تهیه کننده: ایمان شاکری