

bande naf

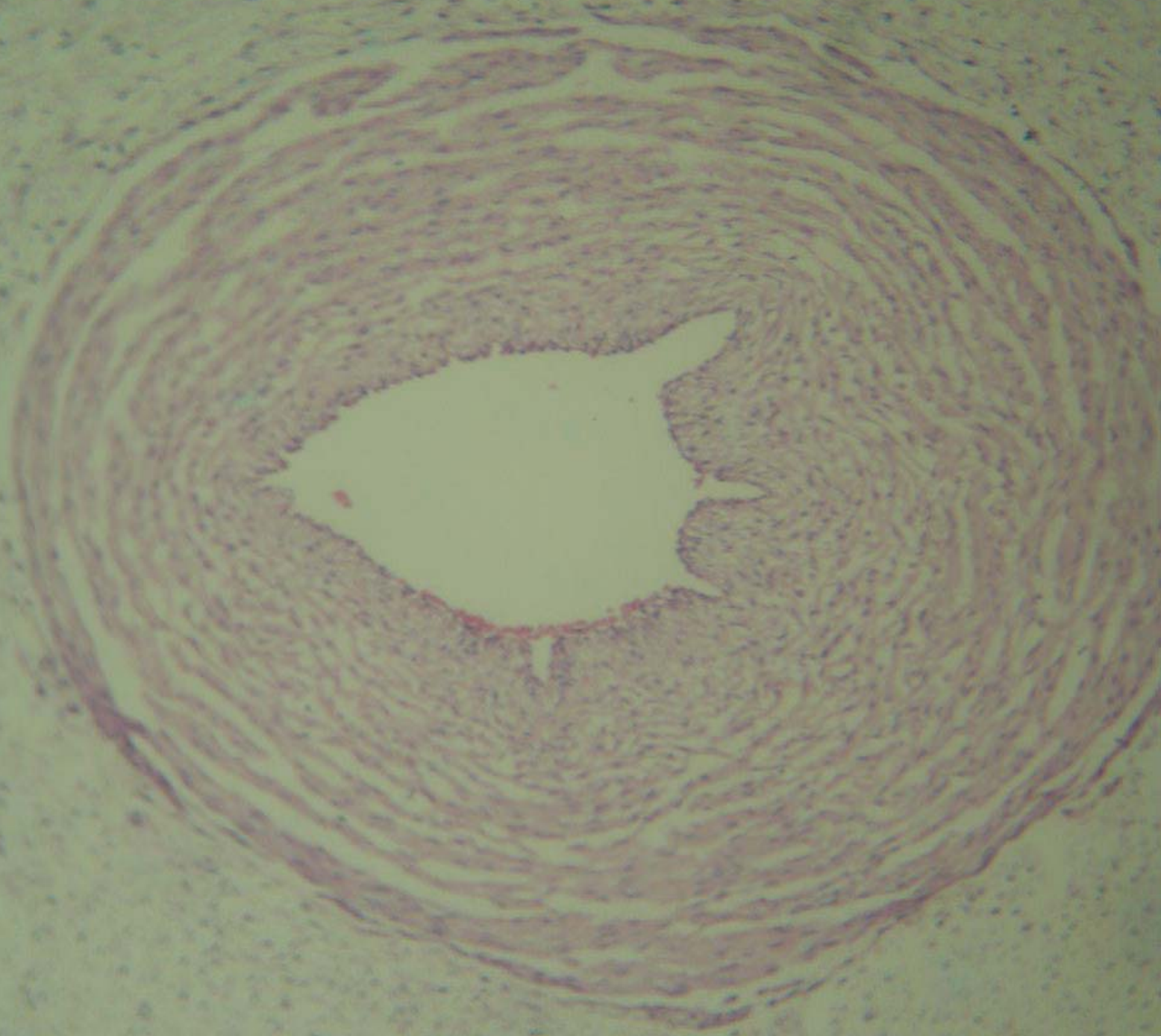
The image shows a histological section of tissue, likely stained with hematoxylin and eosin (H&E). The tissue exhibits a dense, fibrous appearance with a central band-like region. The overall color is a mix of pink and purple, with the purple representing nuclei and the pink representing the extracellular matrix or cytoplasm. The texture is somewhat irregular, suggesting a complex tissue structure.

bande naf



bande naf

bande naf



bande naf

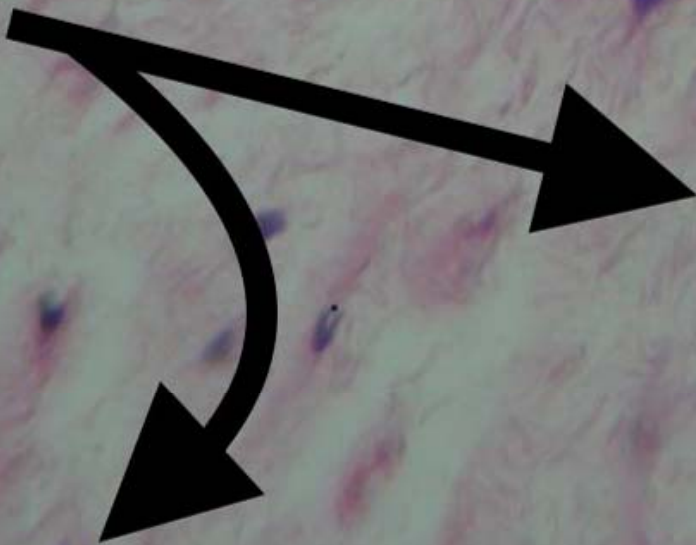
ماکروفجار



فیبروبلاست



فیروسیت





bande naf

bande naf

سرخ رنگ



bande naf





bande naf



bande naf

bande naf

سپاہرگ

سپایه‌ها

bande naf

سرخرگ

بافت موکوزی

ماده زمینه‌ای

سرخرگ



A histological section of a blood vessel, likely an artery, stained with hematoxylin and eosin (H&E). The vessel lumen is the central, clear area, which is filled with a dense, red-stained material, possibly a thrombus or a large amount of red blood cells. The vessel wall is composed of multiple layers of smooth muscle cells, appearing as concentric, wavy bands of pink and purple tissue. The overall structure is circular and well-defined.

bande naf



bande naf



bande naf

bande naf

سرخه





bande naf



bande naf

bande naf

سرخزنگ





bande naf



bande naf

bande naf



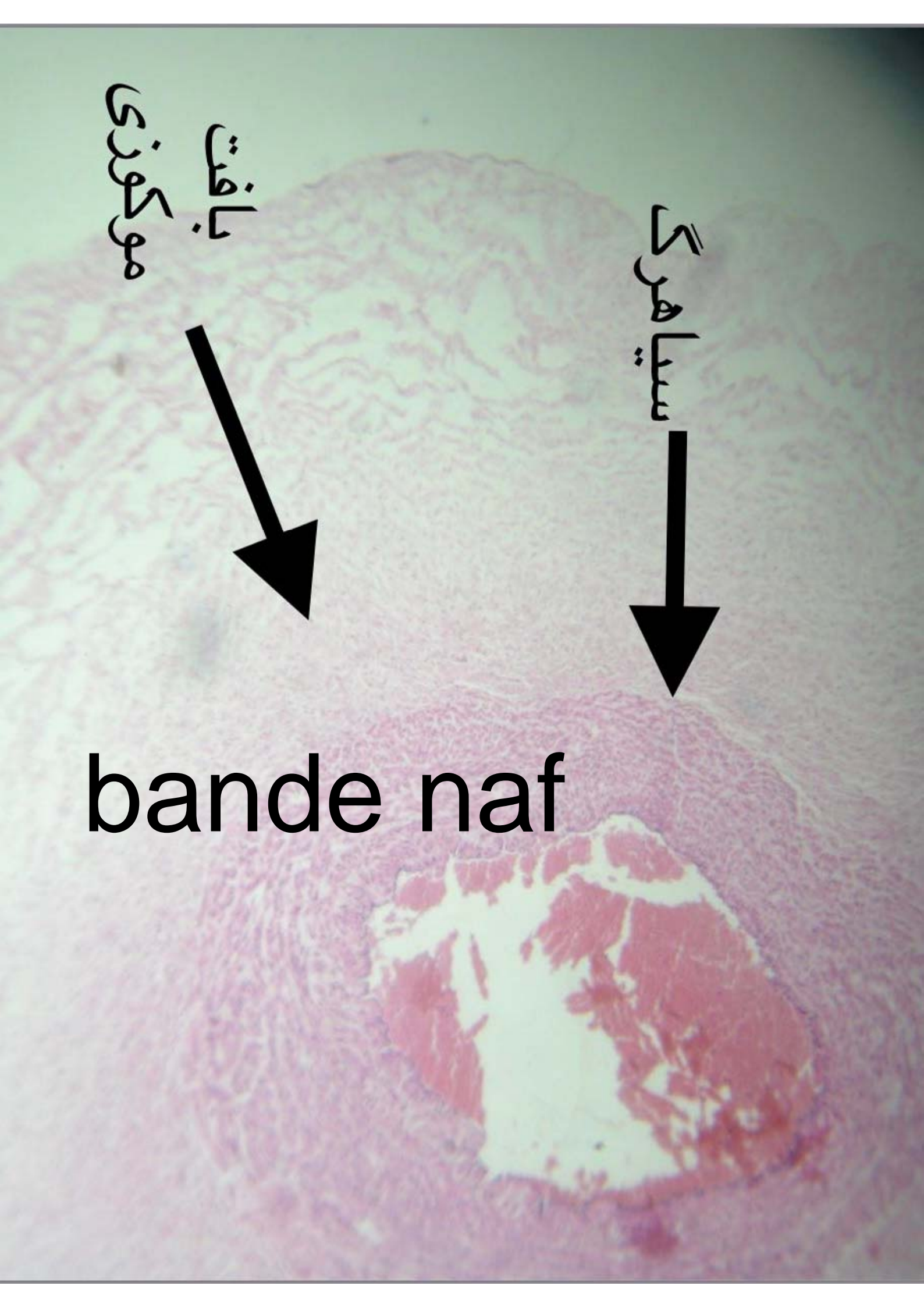
موگوزی
بافت



سیاهرگ



bande naf





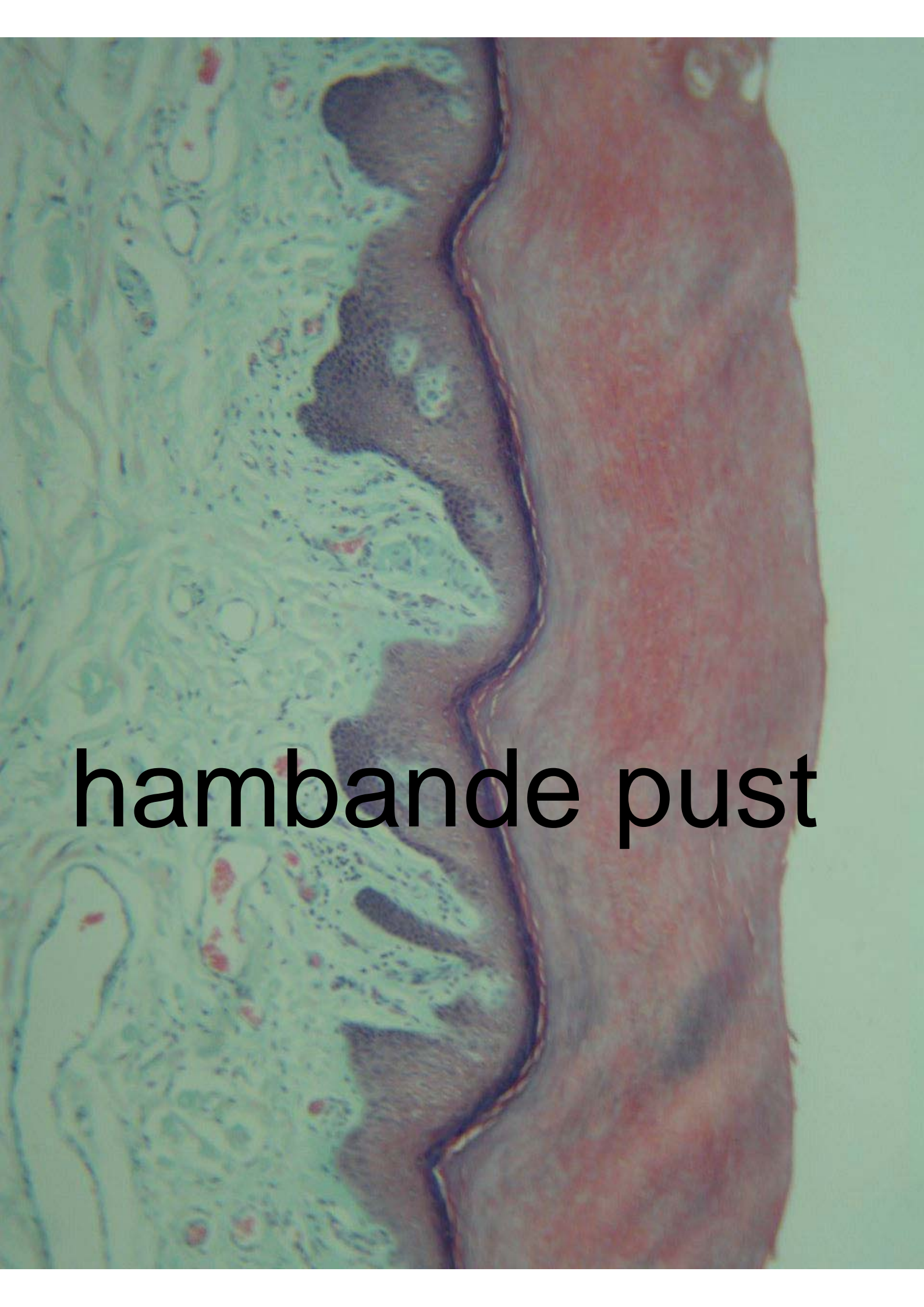
bande naf

bande naf

hambande pust



hambande pust



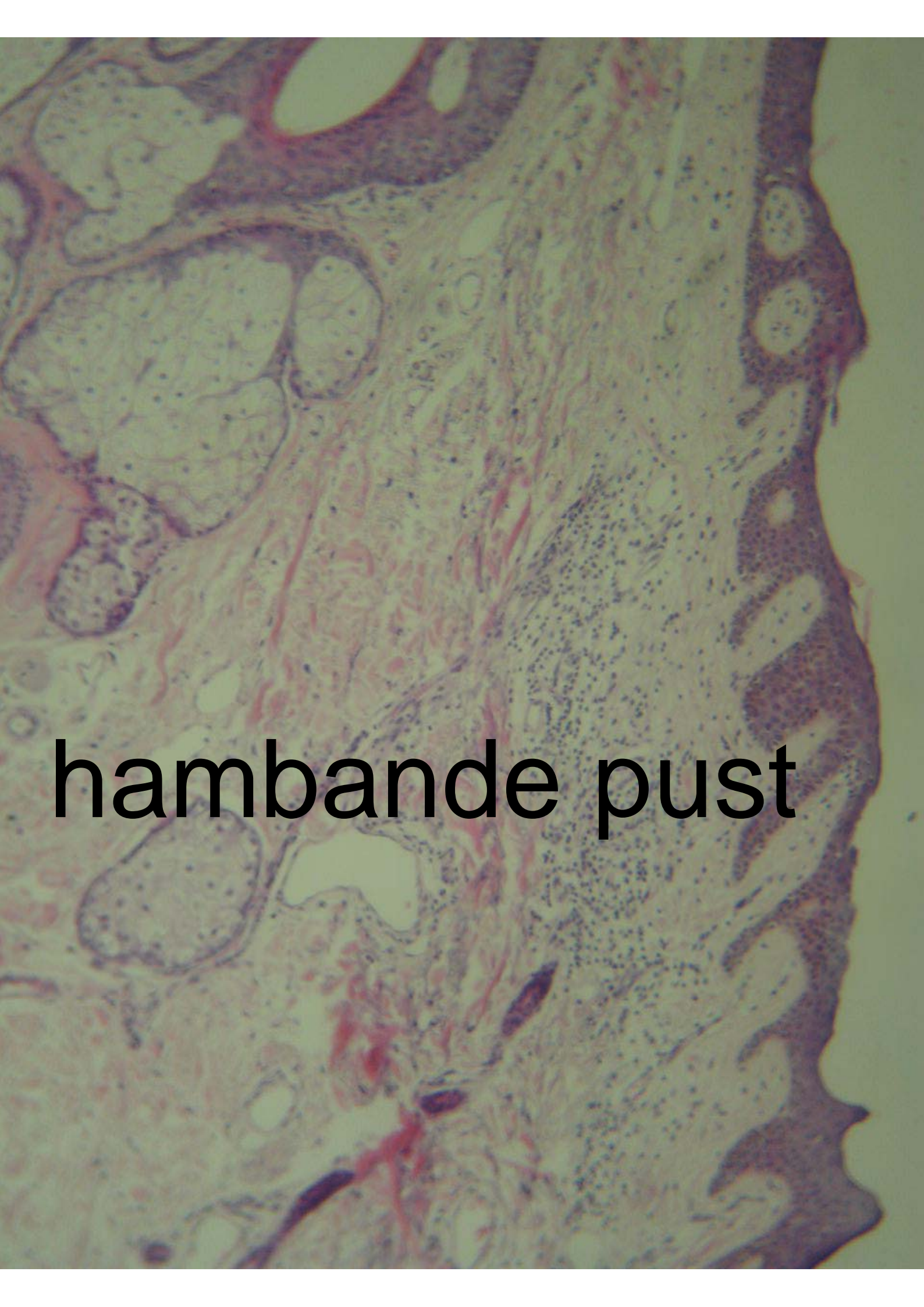
hambande pust



hambande pust

hambande pust



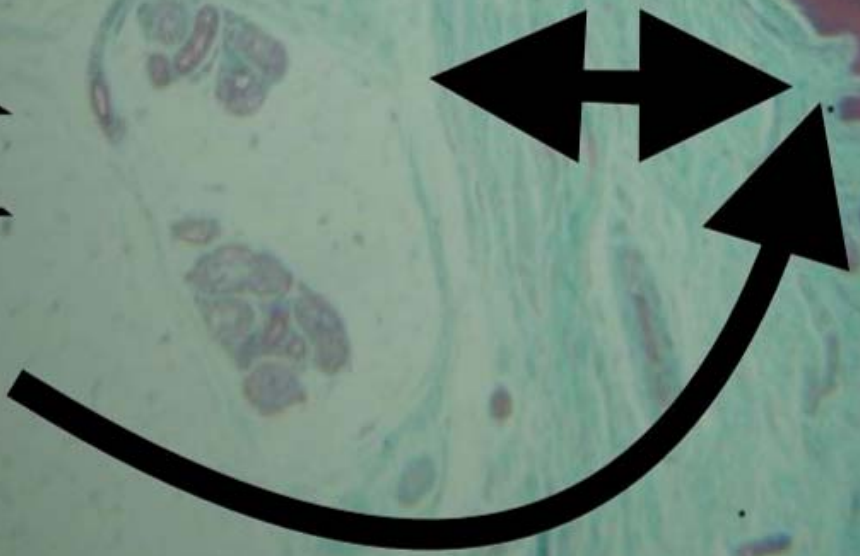


hambande pust

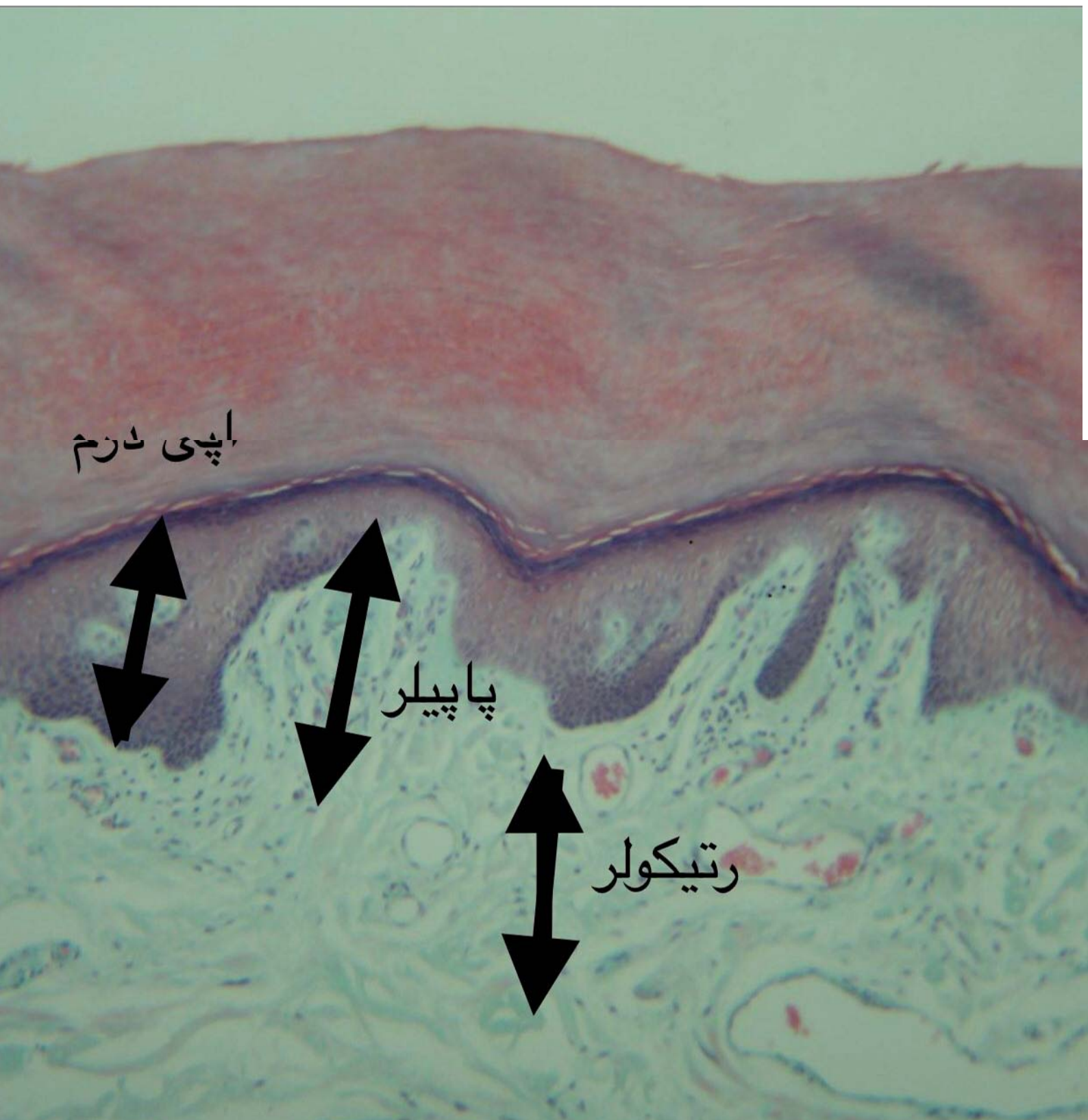
nambande pust

رتیکولر

پاپیلر



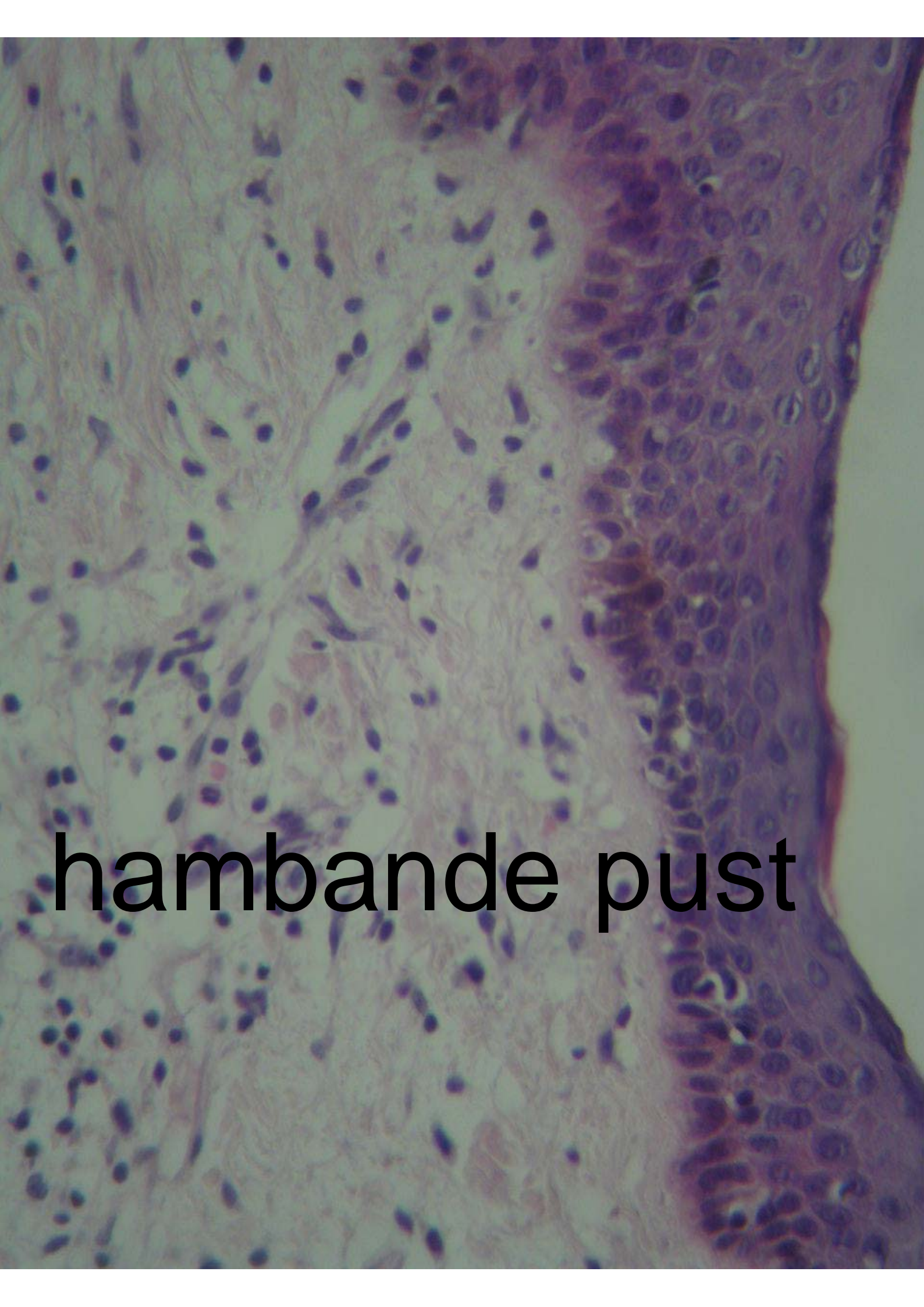
hambande pust



hambande pust

مکعبی تک لایه
غده چربی





hambande pust



hambande pust



hambande pust

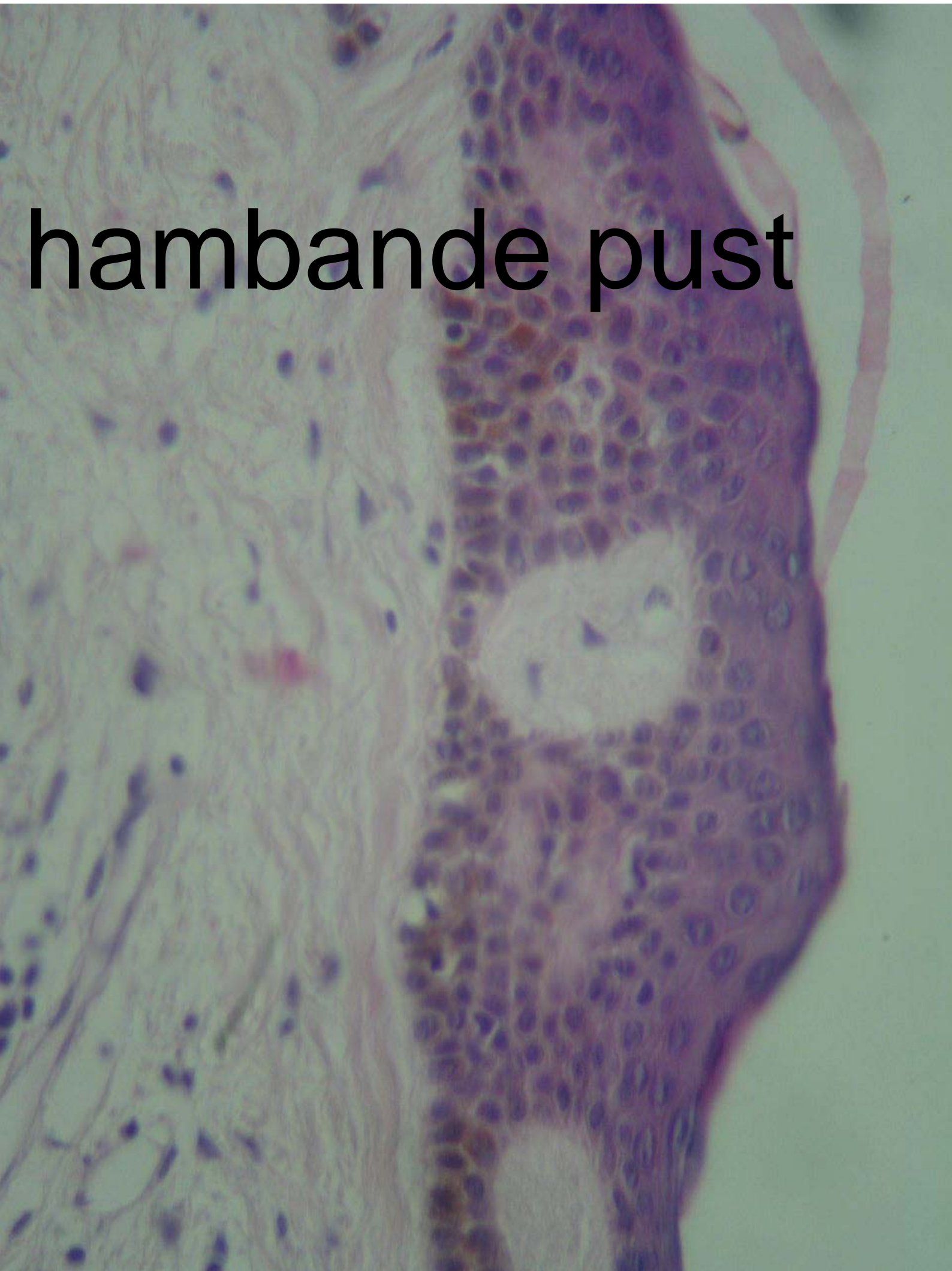


hambande pust



hambande pust

hambande pust



hambande pust



hambande khun

hambande khun

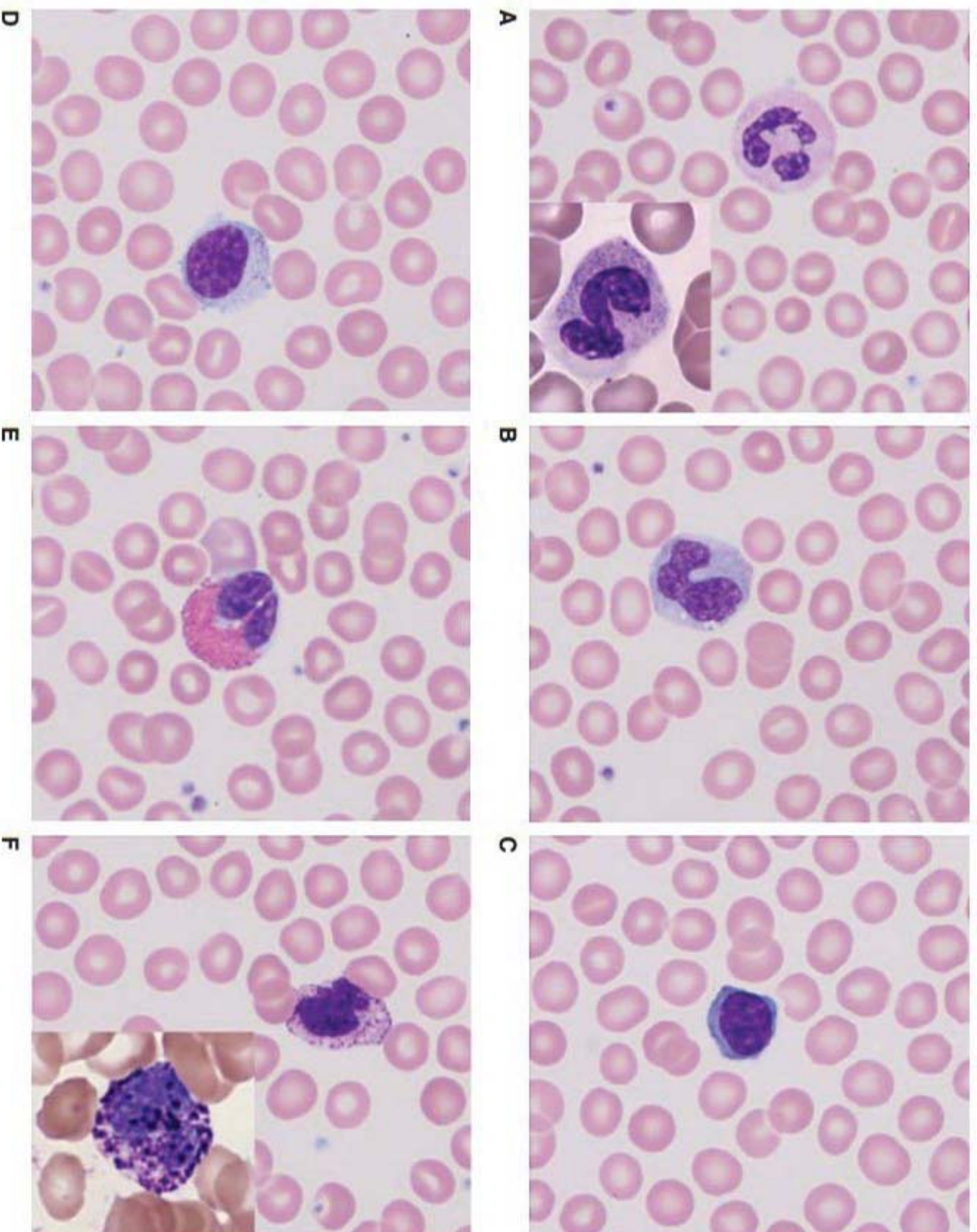


Figure 2-4. Images from a normal blood film showing major leukocyte types. The red cells are normocytic (normal size) and normochromic (normal hemoglobin content) with normal shape. The scattered platelets are normal in frequency and morphology. **A.** A platelet caught sitting in the biconcavity of the red cell in the preparation of the blood film. This normal finding should not be mistaken for a red cell inclusion. Images are taken from the optimal portion of the blood film for morphologic analysis. Image shows a **(A)** segmented (polymorphonuclear) neutrophil and in the inset a band neutrophil; **(B)** monocyte; **(C)** small lymphocyte; **(D)** large granular lymphocyte, note larger size than lymphocyte in **(C)** and increased amount of cytoplasm containing scattered eosinophilic granules; and **(E)** eosinophil. Virtually all normal blood eosinophils are bilobed and filled with relatively large (compared to the neutrophil) eosinophilic granules. **F.** Basophil and in inset a basophil that was less degranulated during film preparation, showing relatively large basophilic granules. The eosinophilic and basophilic granules are readily resolvable by light microscopy ($\times 1000$), whereas the neutrophilic granule is not resolvable but in the aggregate imparts a faint tan coloration to the neutrophil cytoplasm, quite distinctly different from the blue-gray cytoplasmic coloring of the monocyte and lymphocyte.

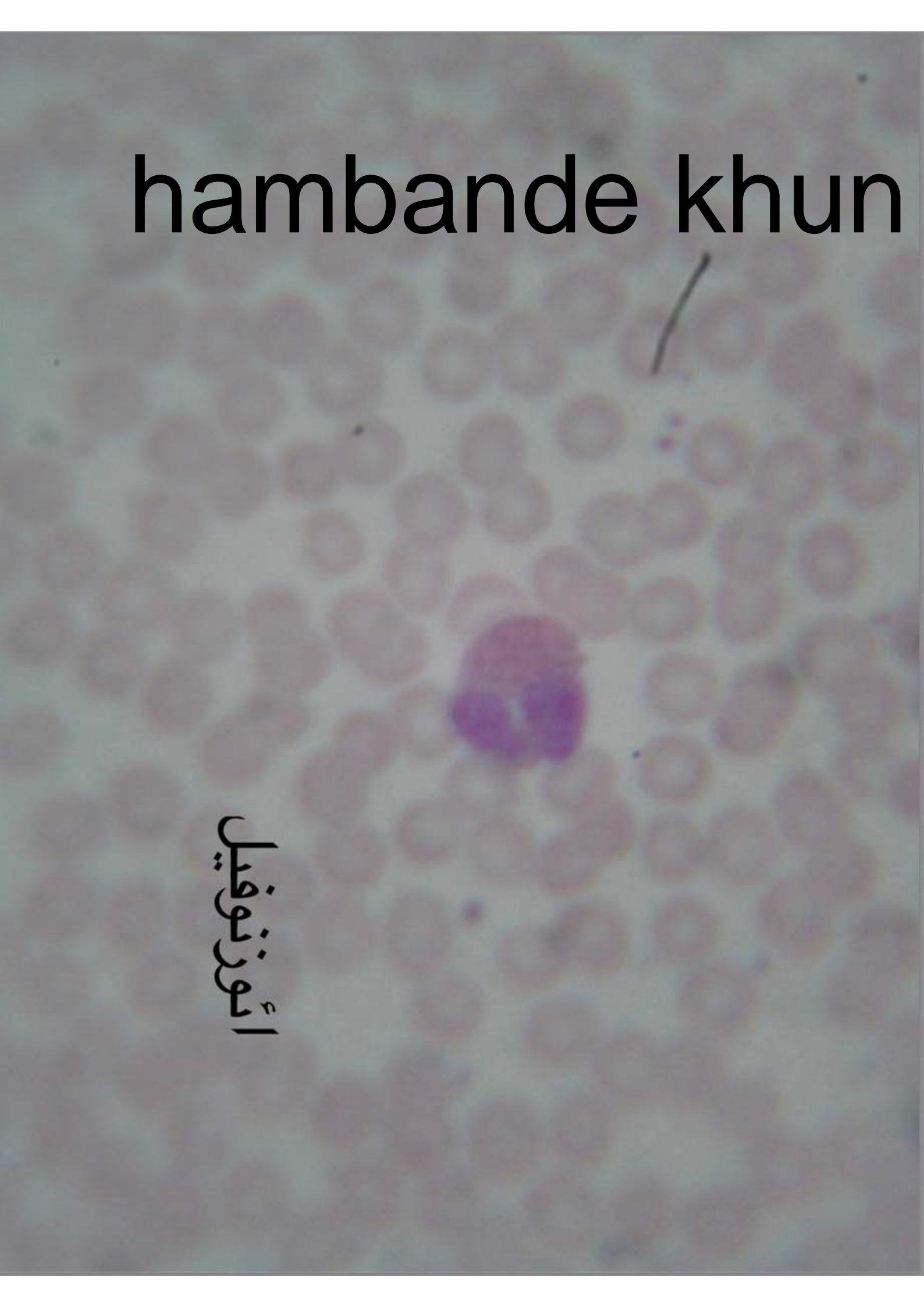
hambande khun

النفوسيت



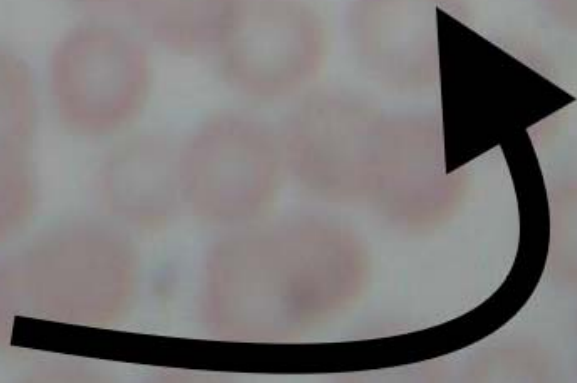
hambande khun

اؤز توفیل



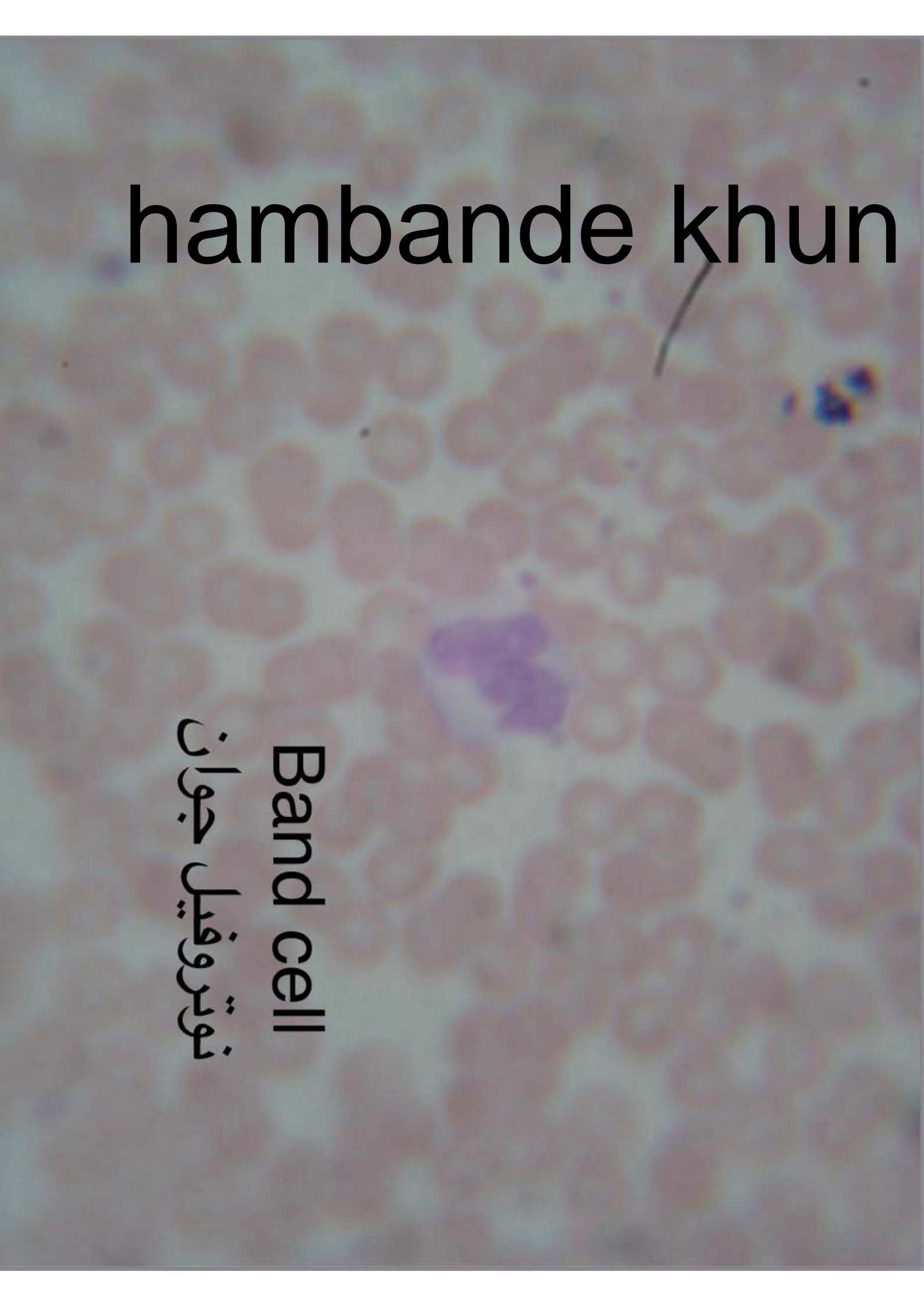
hambande khun

نوٹروفیل



hambande khun

Band cell
نوٹروفیل جوان



hambande khun



اٲوزنوفيل

hambande khun

اؤز توفيل



hambande khun

بازوفیل



hambande khun

نوٹروفیل جوان

Band cell



hambande khun

بازوفیل



hambande khun

نوٹروفیل

hambande khun

اؤز نوقیل

hambande khun

انفوسيت

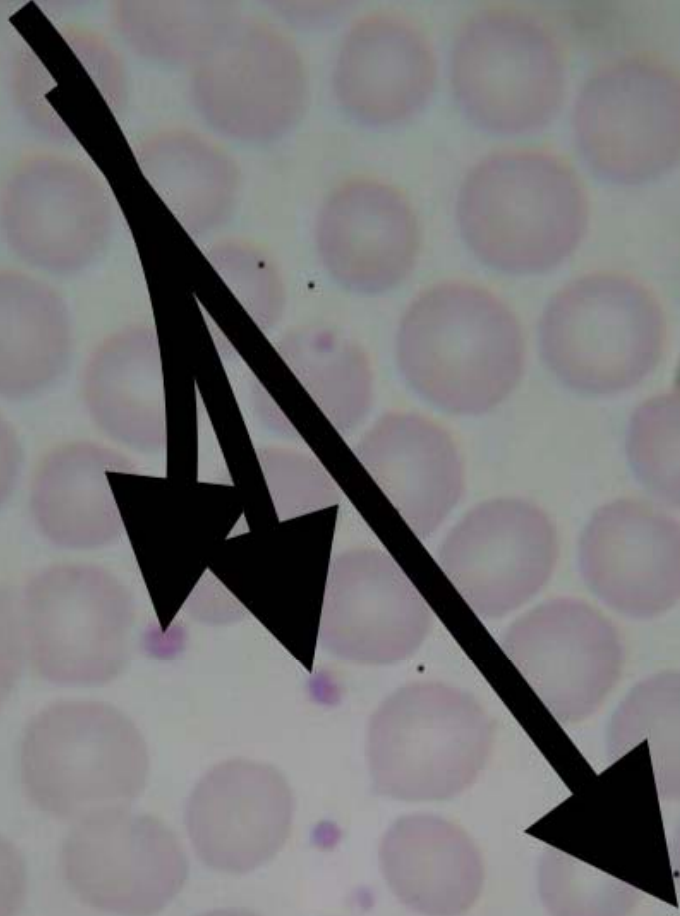




hambande khun

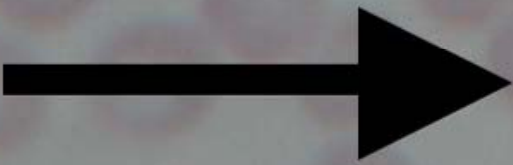
اٲوزنوٲيل

پلاکت



hambande khun

گلوبول قرمز



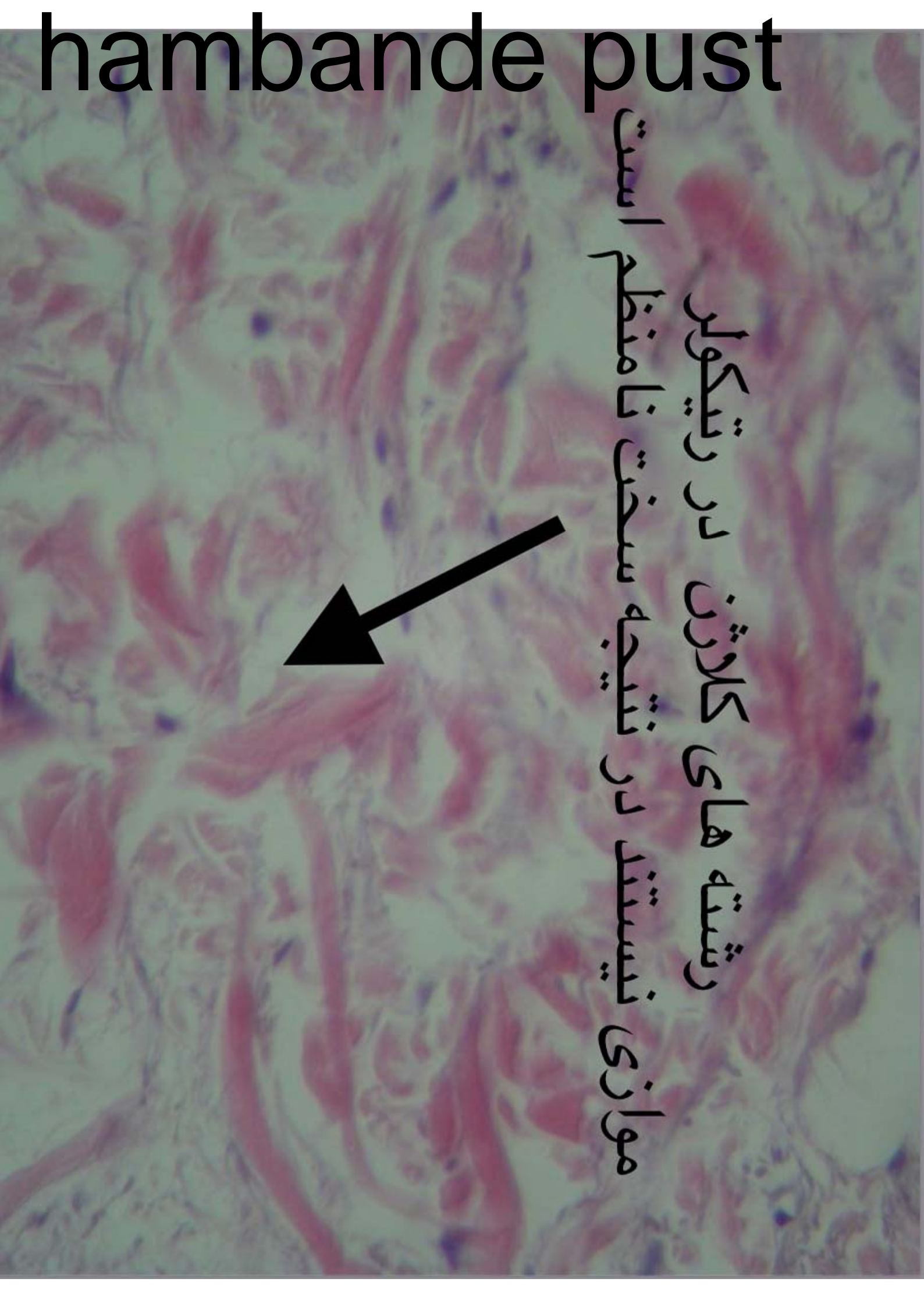
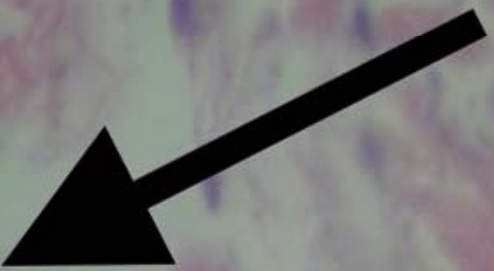


درماتال پاپیلا

hambande pust

hambande pust

رشته های کلاژن در رتیکولر
موازی نیستند در نتیجه سخت نامنظم است



hambande pust

سلول چربی



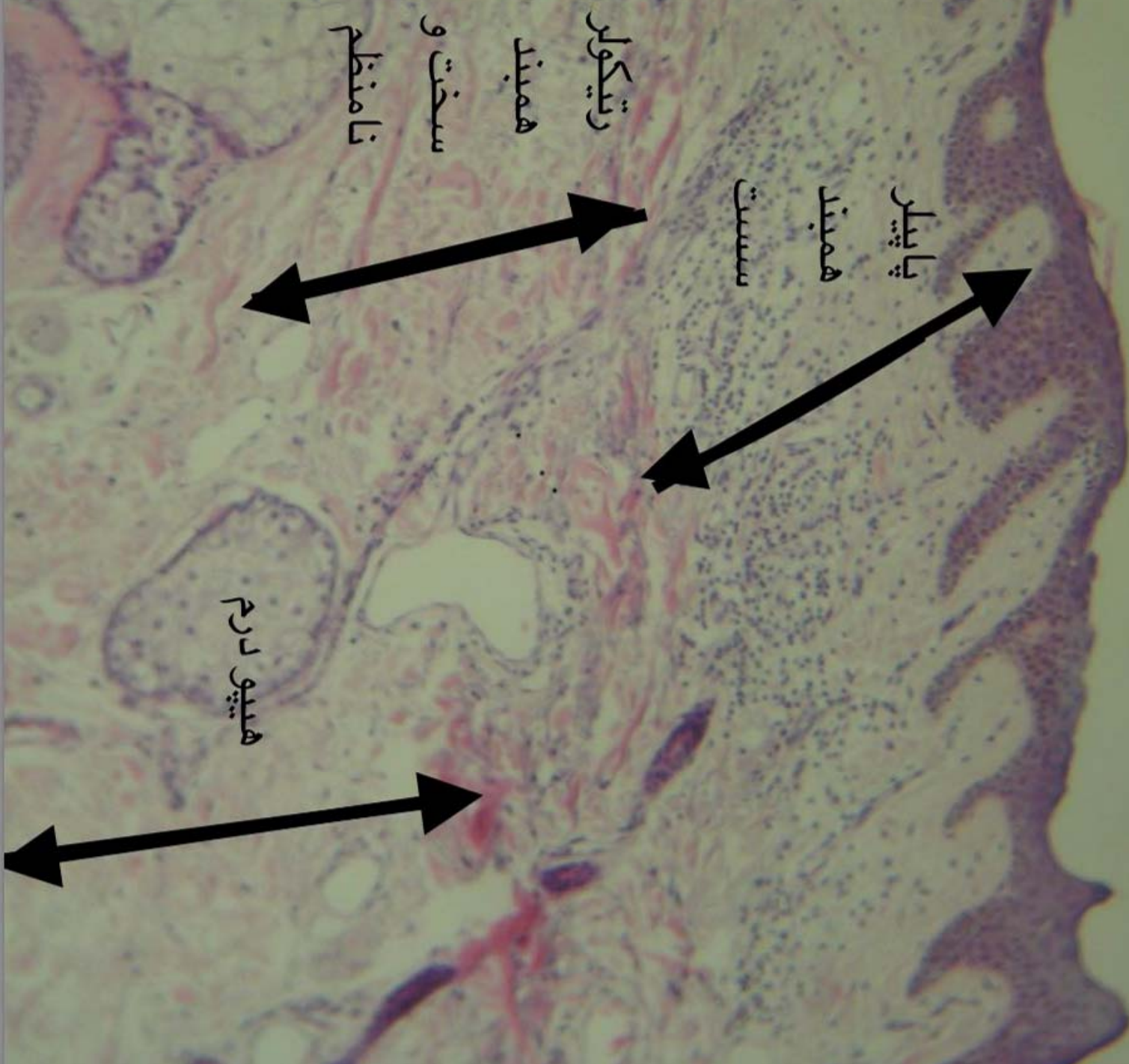
هسته سلول

به یک سمت

گشاده شده



hambande pust



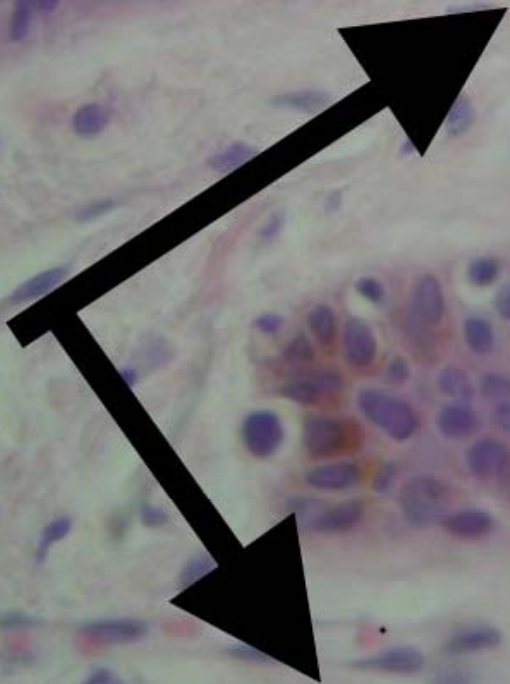
لایه شاخی شده



hambande pust



اڻي درم

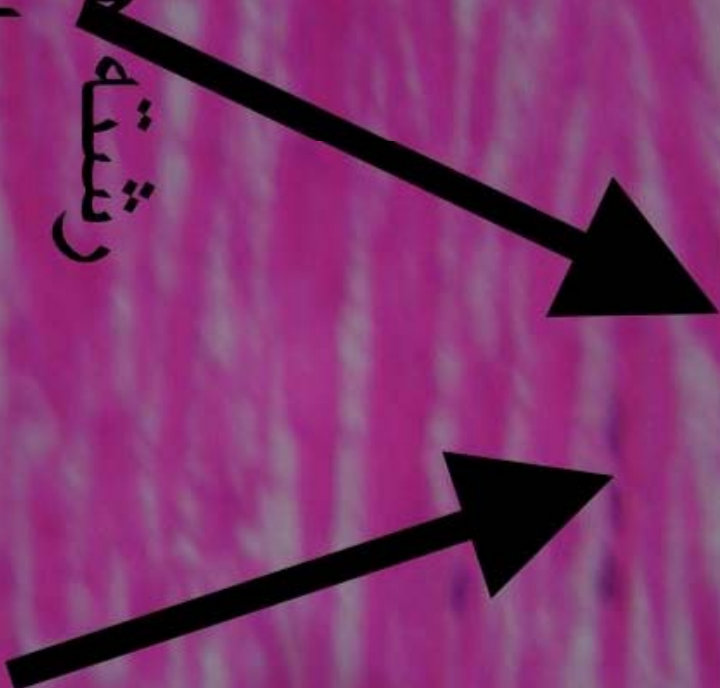


درمال پائيل

Tendon

رشته های کلاژن
موازی هم

رشته ها



Tendon

Tendon



A microscopic image of a tendon, showing a dense arrangement of parallel collagen fibers. The fibers are light pink and run horizontally across the frame. The background is a pale, slightly yellowish color. The word "Tendon" is overlaid in the center in a large, black, sans-serif font.

Tendon

Tendon

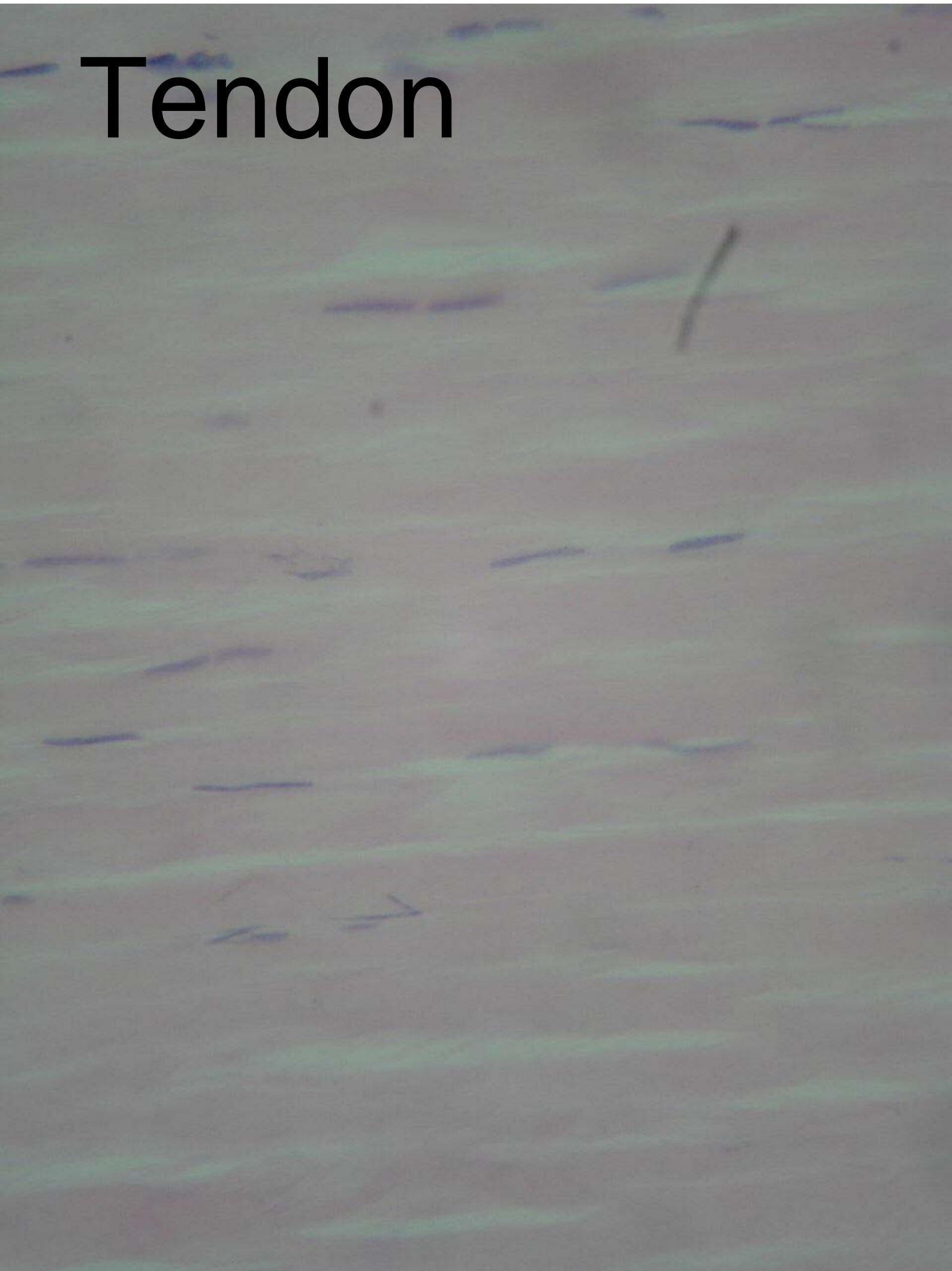
رشته های کلاژن



رشته ها



Tendon



Tendon



رشته های
کلاژن



هسته ها

Tendon



Tendon



Tendon

