

29. **EWB** or **PSpice** The switch of Figure 14–46 is closed at $t = 0$ and remains closed. Graph the voltage across L and find v_L at $20 \mu\text{s}$ using the cursor.

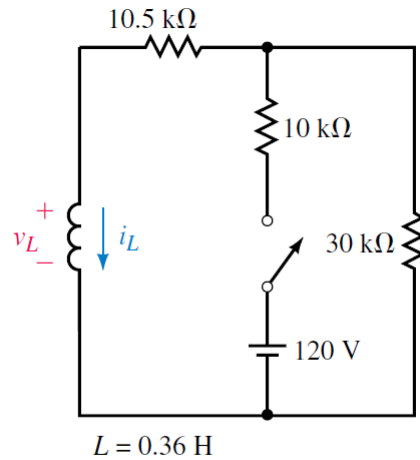


FIGURE 14-46

34. **PSpice** The circuit of Figure 14–46 is in steady state with the switch open. At $t = 0$, the switch is closed. It remains closed for $150 \mu\text{s}$ and is then opened and left open. Compute and plot i_L and v_L . With the cursor, determine values at $t = 60 \mu\text{s}$ and at $t = 165 \mu\text{s}$.
51. **PSpice** The switch of Figure 11–70 is closed at $t = 0$ s. Plot voltage and current waveforms. Use the cursor to determine v_C and i_C at $t = 10$ ms.

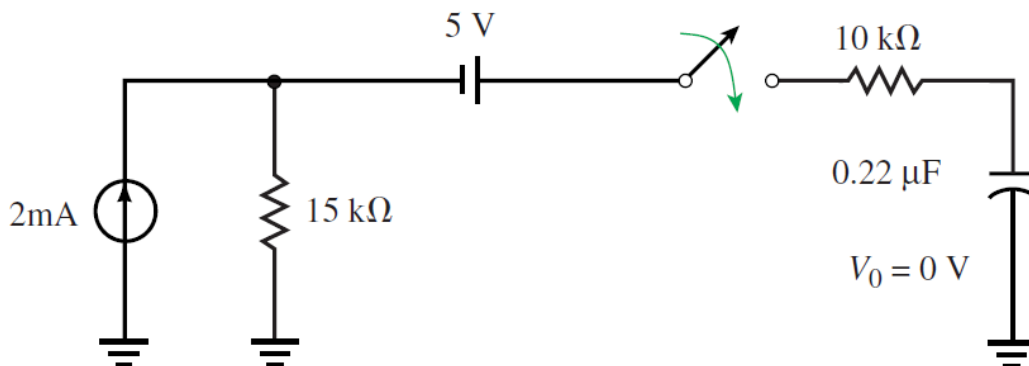


FIGURE 11-70