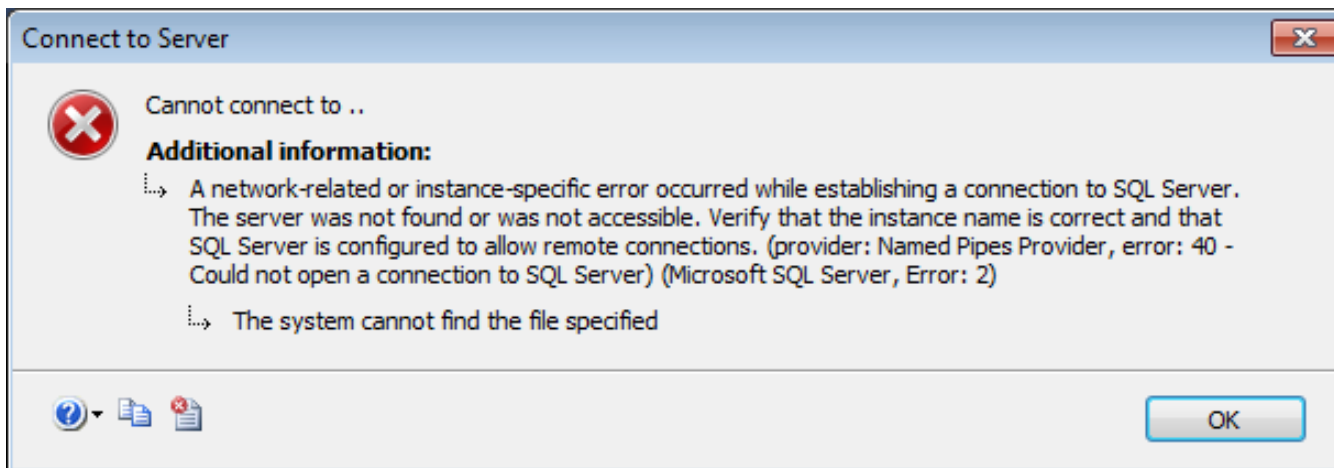


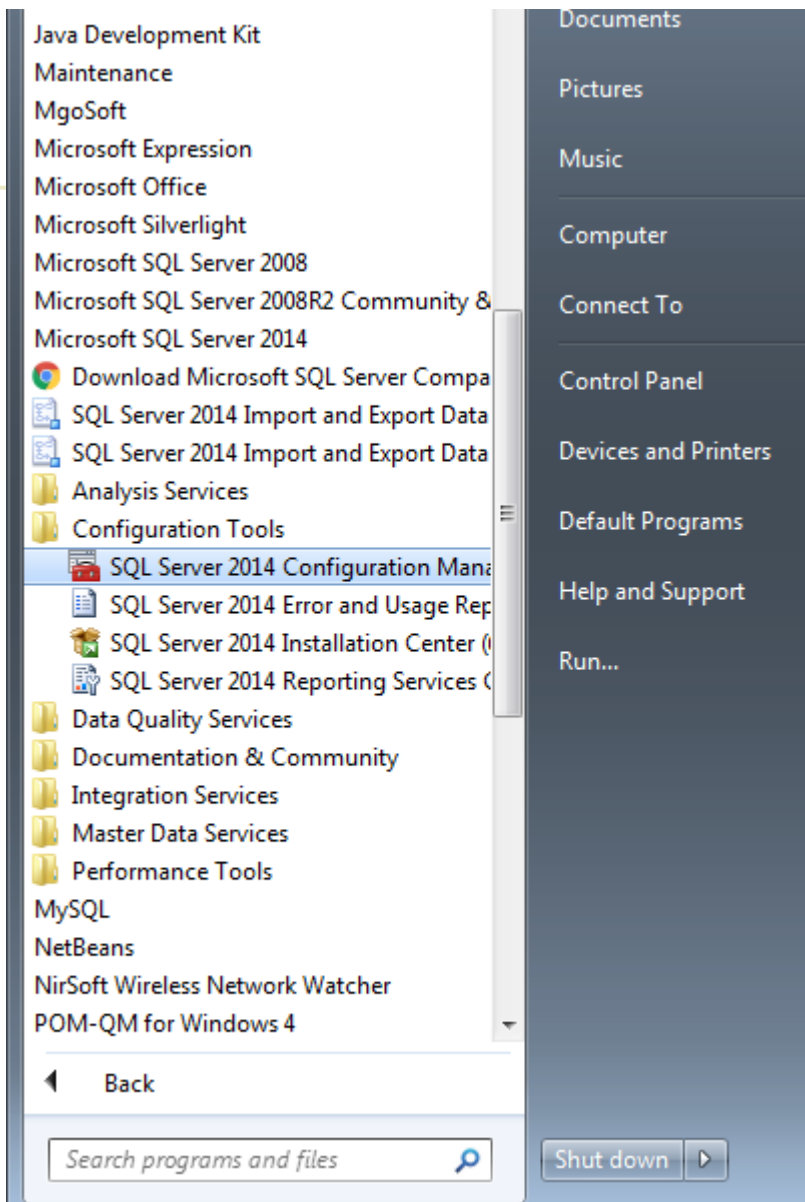
آزمایشگاه پایگاه داده ها

نکات کار با نرم افزار SQL Server 2014

پیام خطای ورود به SQL

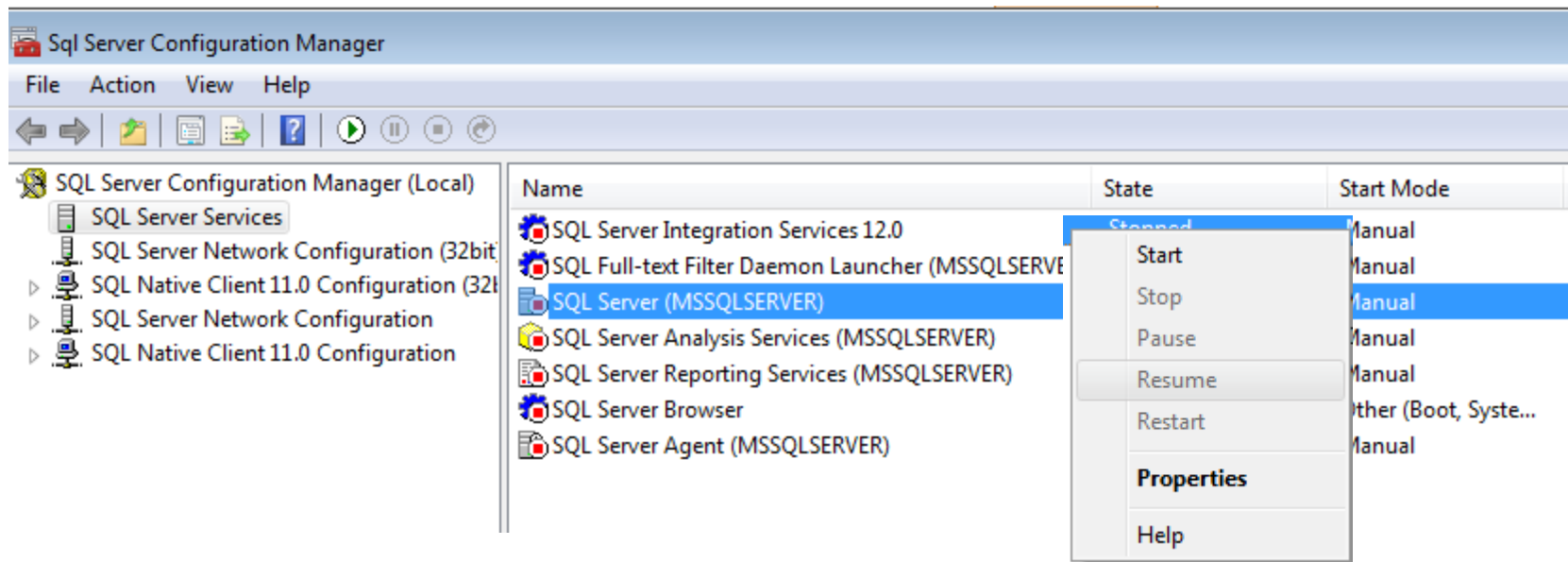


- برای حل این خطا باید به بخش **configuration manager** رفته و سرویس مورد نظر را از حالت **stop** به **start** تغییر دهیم.
- مشابه شکل صفحه بعد

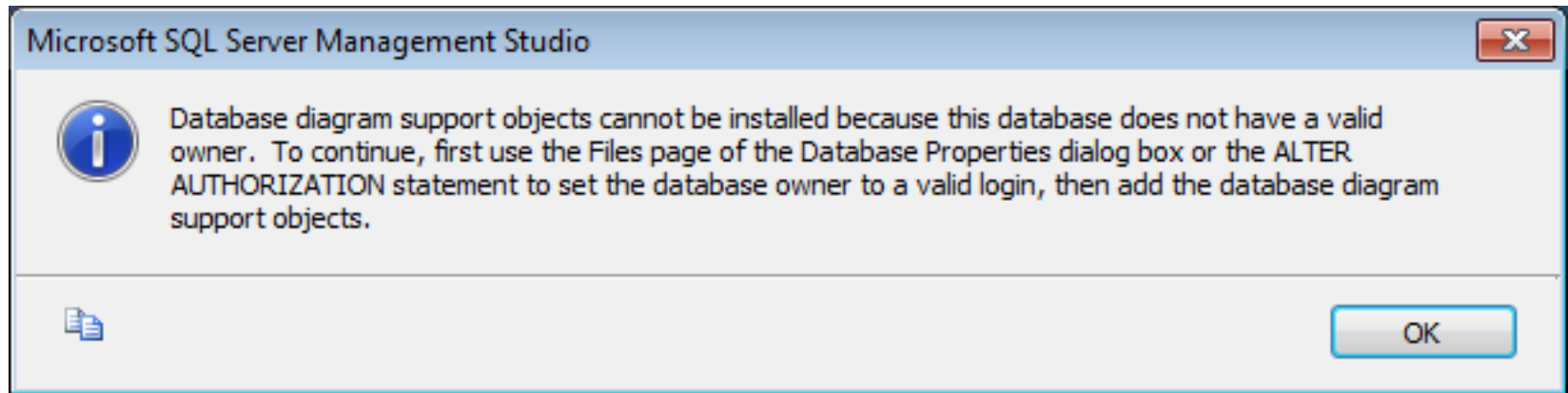


برای حل این خطا باید به بخش
configuration manager رفته و
سرویس مورد نظر را از حالت **stop** به
start تغییر دهیم.

پیام خطای ورود به SQL (ادامه).



پیغام خطای دیاگرام



Categories: **SQL Server**

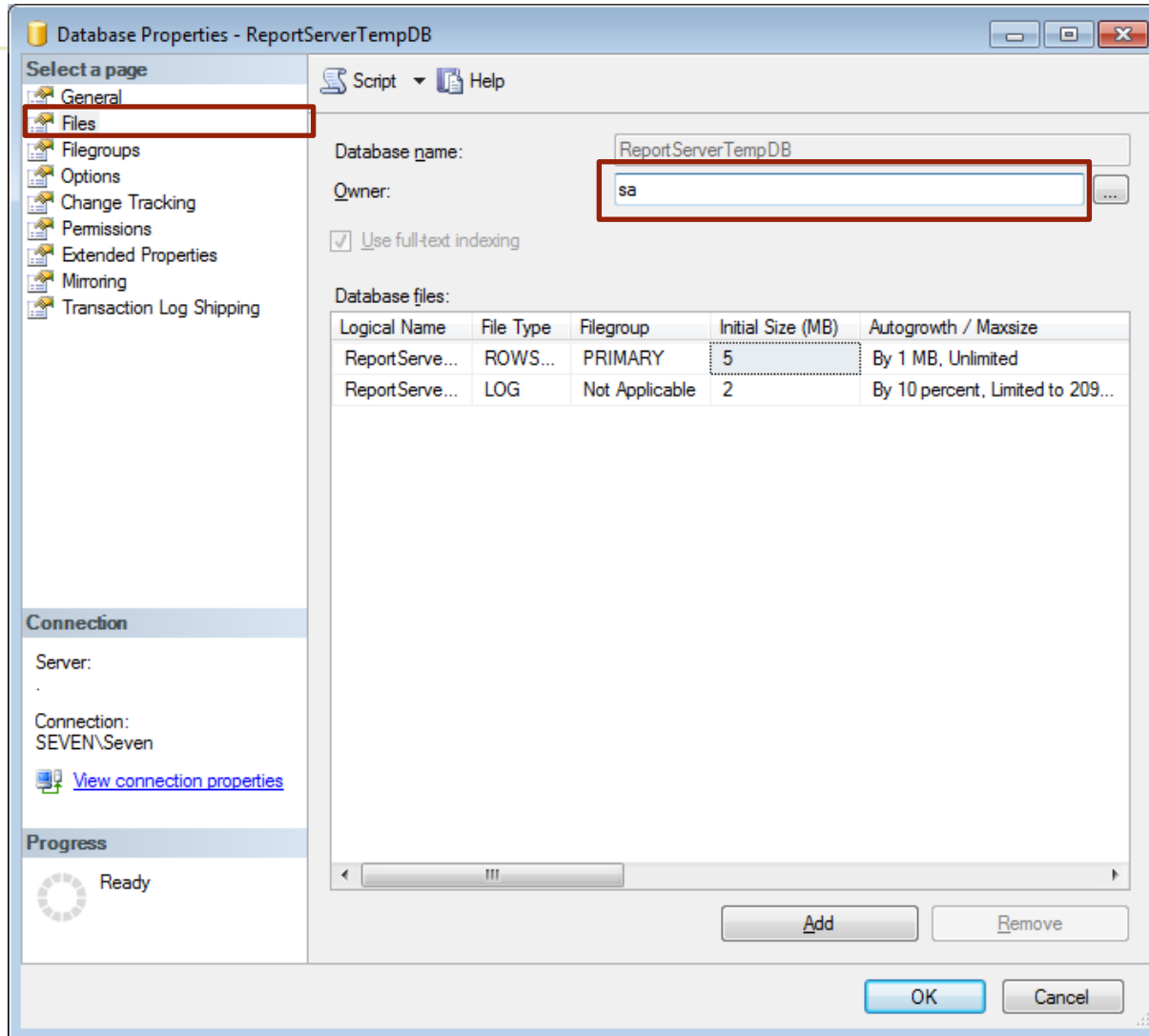
Microsoft SQL Server Management Studio

Database diagram support objects cannot be installed because this database does not have a valid owner. To continue, first use the Files page of the Database Properties dialog box or the ALTER AUTHORIZATION statement to set the database owner to a valid login, then add the database diagram support objects.

Solution:

1. Right Click on your database, choose **properties**
2. Goto the **Files**
3. Change the **owner** textbox to "**sa**"
4. Press OK

رفع خطأ



خطای Stored Procedure

"CREATE PROCEDURE must be the only statement in the batch"

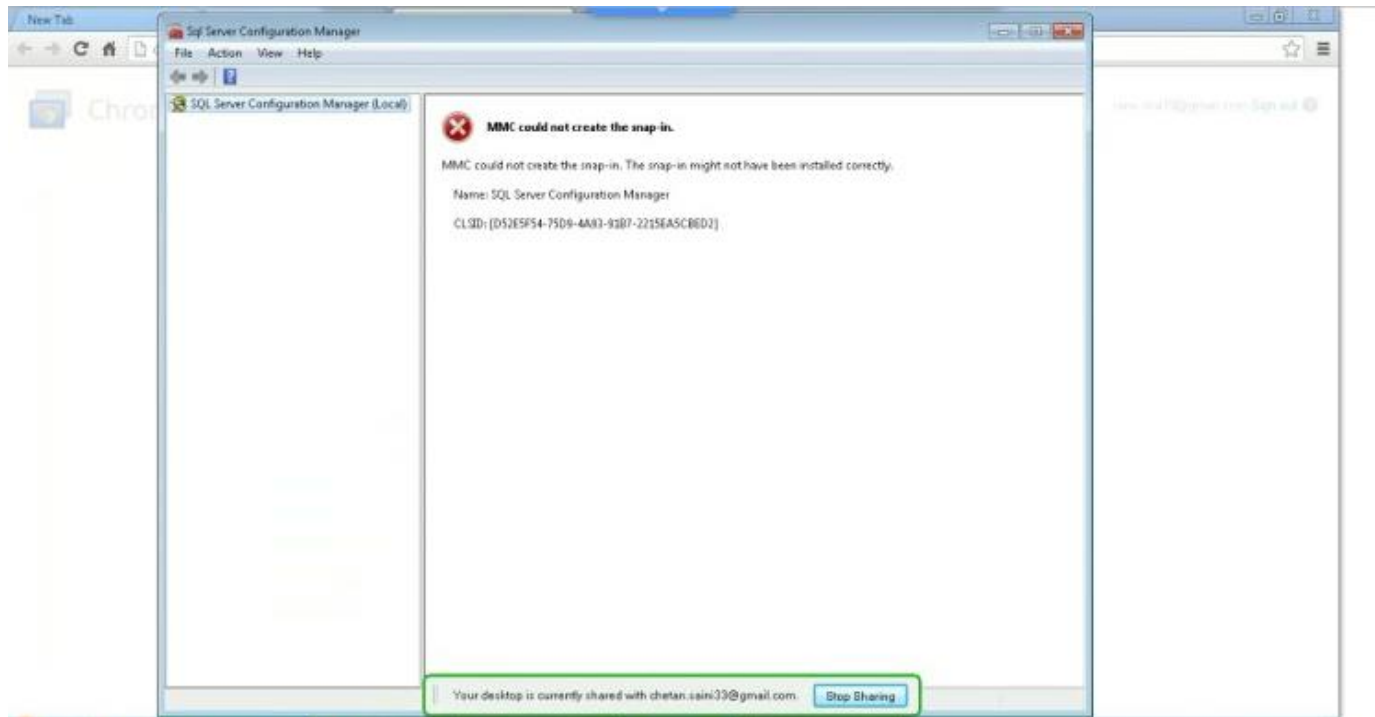
```
--create stored procedure  
  
create PROCEDURE GetCustomerOrder  
@OrderDateFrom as Datetime,  
@OrderDateTo as Datetime,  
@NumRows as int=0 output  
AS  
Begin  
set NoCount ON  
select OrderID, CustomerID, ShipVia, OrderDate, RequiredDate, ShippedDate  
from Orders
```

Incorrect syntax: 'CREATE PROCEDURE' must be the only statement in the batch.

برای رفع این خطا باید قبل از ایجاد SP از دستور GO نیز استفاده شود ، همین طور بین SP های مختلف نیز از GO استفاده شود.

مشکل Configuration manager

MMC could not create the snap-in SQL Server configuration manager



- **Win button + R**, then type **mmc** and press enter.
 - Choose **File->Add/Remove Snap-in**.
 - Click **Add** to Console Root
 - and find the "**SQL Server Configuration Manager**«
-
- I said there that I had the same problem and found out that it was an issue with .net framework.
 - I downloaded this file: "dotNetFx40_Full_x86_x64.exe" from Microsoft website, and used the "repair" option. It worked for me. Hope it helps.

