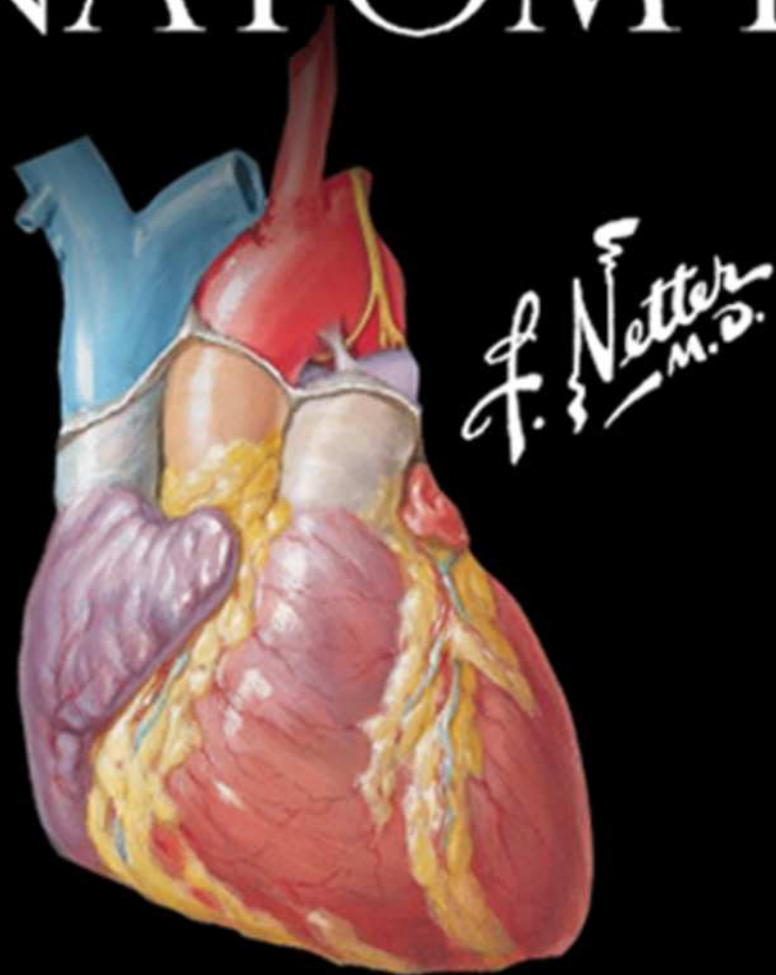


FRANK H. NETTER, MD

ATLAS OF HUMAN ANATOMY



NETTER

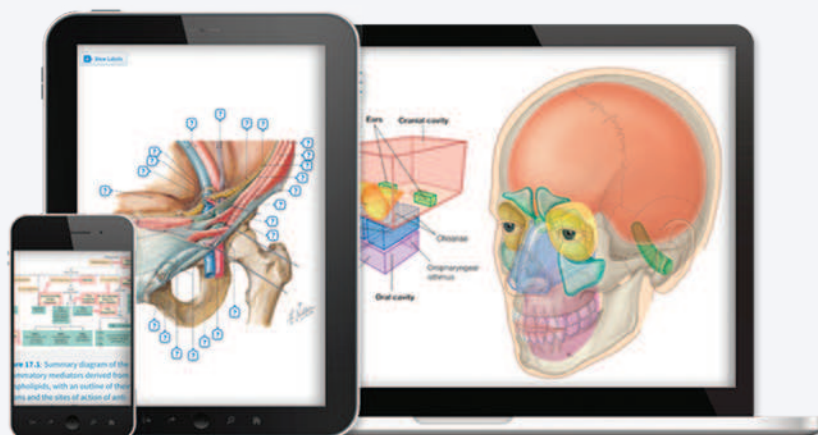
7

SEVENTH
EDITION

ELSEVIER

Any screen. Any time. Anywhere.

Activate the eBook version
of this title at no additional charge.



Student Consult eBooks give you the power to browse and find content, view enhanced images, share notes and highlights—both online and offline.

Unlock your eBook today.

- 1 Visit studentconsult.inkling.com/redeem
- 2 Scratch off your code
- 3 Type code into “Enter Code” box
- 4 Click “Redeem”
- 5 Log in or Sign up
- 6 Go to “My Library”

It's that easy!

Scan this QR code to redeem your
eBook through your mobile device:



Place Peel Off
Sticker Here

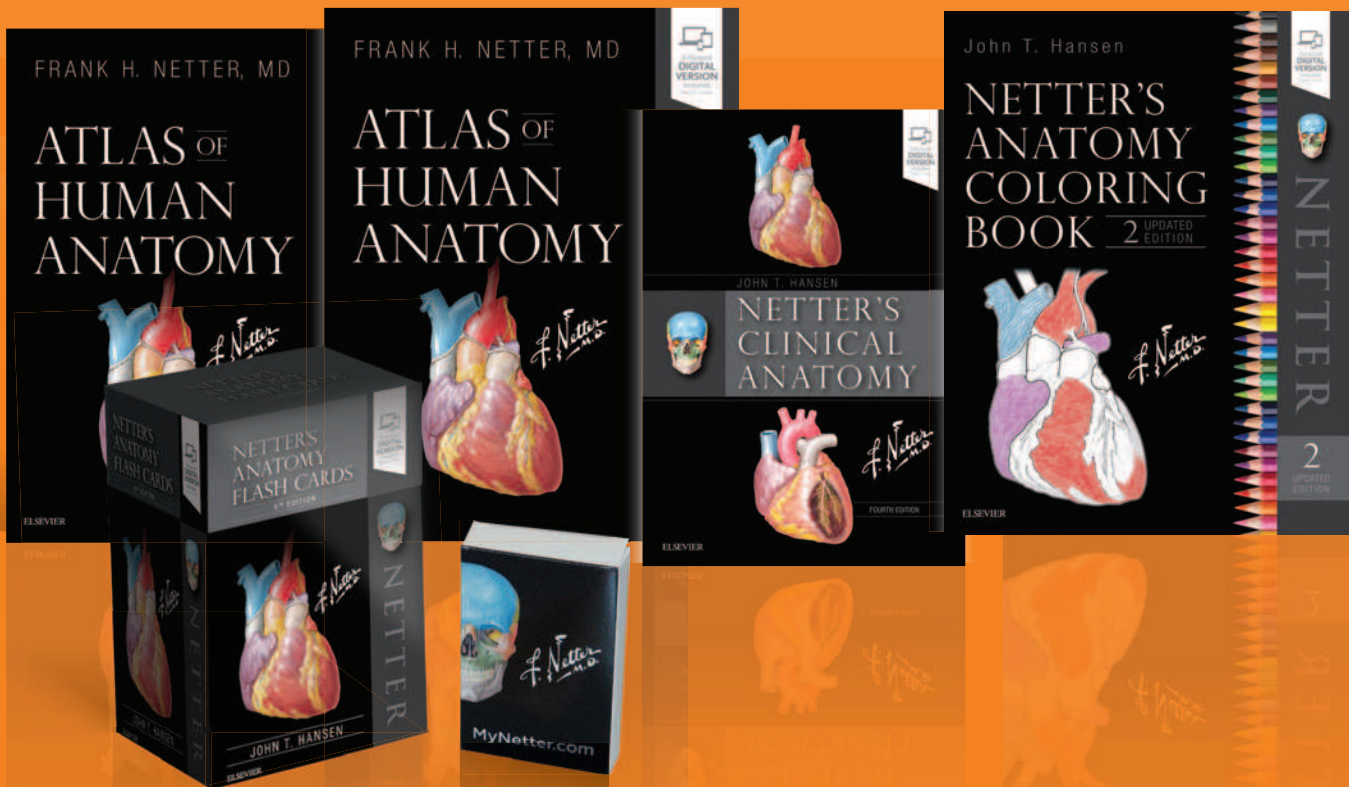
For technical assistance:
email studentconsult.help@elsevier.com
call 1-800-401-9962 (inside the US)
call +1-314-447-8200 (outside the US)

ELSEVIER

Use of the current edition of the electronic version of this book (eBook) is subject to the terms of the nontransferable, limited license granted on studentconsult.inkling.com. Access to the eBook is limited to the first individual who redeems the PIN, located on the inside cover of this book, at studentconsult.inkling.com and may not be transferred to another party by resale, lending, or other means.

ELSEVIER

Brand New From NETTER



**Atlas of Human Anatomy,
7th Edition**

ISBN: 978-0-323-39322-5

**Atlas of Human Anatomy,
Professional Edition, 7th Edition**

ISBN: 978-0-323-55428-2

**Netter's Anatomy Coloring Book,
2nd Edition**

ISBN: 978-0-323-54503-7

**Netter's Clinical Anatomy,
4th Edition**

ISBN: 978-0-323-53188-7

**Netter's Anatomy Flash Cards,
5th Edition**

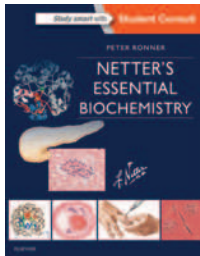
ISBN: 978-0-323-53050-7

Netter Playing Cards

ISBN: 978-0-323-55379-7

Shop today at
!elsevierhealth.com

Explore Netter's Newest Resources!



Netter's Essential Biochemistry

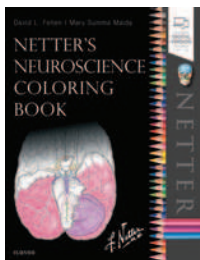
With **STUDENT CONSULT Online Access**

Peter Ronner, PhD

ISBN: 978-1-9290-0763-9

Concise writing, a focus on **clinical applications**,

and **superb illustrations** make this debut title the perfect choice for a basic understanding of biochemistry. A single expert voice, informed by the insights of a team of reviewers, provides continuity throughout the text, presenting essentials of biochemical principles step by step. Summary diagrams help you grasp key concepts quickly, and end-of-chapter questions reinforce key concepts.



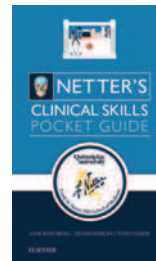
Netter's Neuroscience Coloring Book

David L. Felten and Mary E Maida

ISBN: 978-0-323-50959-6

Reinforce your knowledge of neuroanatomy, neuroscience, and

common pathologies of the nervous system with this active and engaging learn and review tool! *Netter's Neuroscience Coloring Book* challenges you to a **better understanding of the brain, spinal cord, and peripheral nervous system** using visual and tactile learning. It's a fun and interactive way to trace pathways and tracts, as well as reinforce spatial, functional, and clinical concepts in this fascinating field.

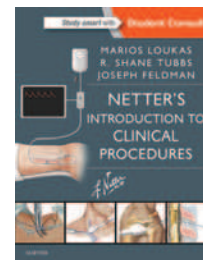


Netter's Clinical Skills Pocket Guide

Ilene L Rosenberg, Todd Cassese and Dennis Barbon

ISBN: 978-0-3235-5164-9

Make the most of every patient encounter — **from the clinical interview and history to the physical exam**, both in-office and bedside. This **discreet quick reference** helps you achieve consistent and comprehensive results when collecting data and determining your next steps. Carry this **thin, fully illustrated checklist** in your white coat pocket for the fastest, most efficient way to access essential information you need to know and remember every day.



Netter's Introduction to Clinical Procedures

With **STUDENT CONSULT Online Access**

Marios Loukas, MD, PhD, R. Shane Tubbs, MS, PA-C, PhD and Joseph Feldman, MD, FACEP

ISBN: 978-0-323-37055-4

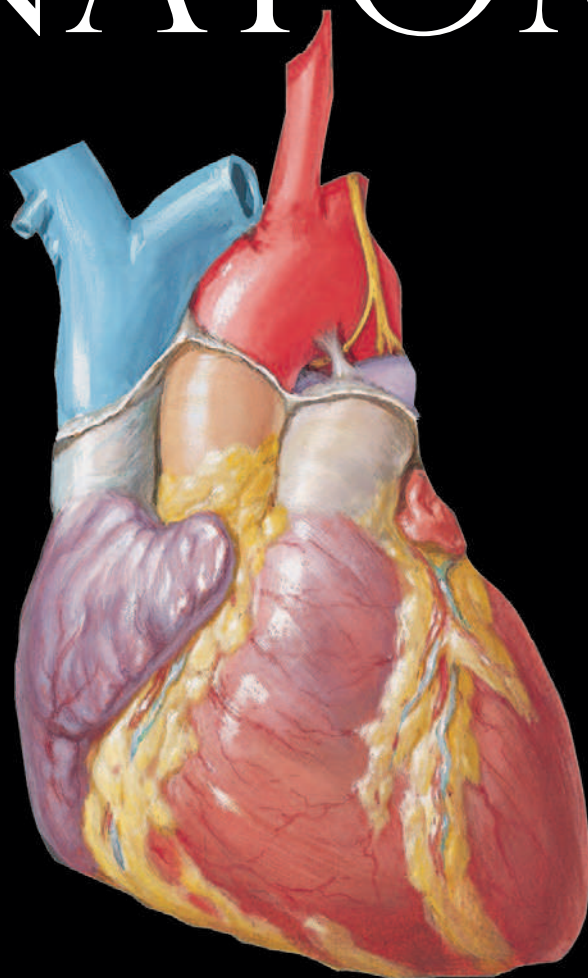
Written with the student in mind, *Netter's Introduction to Clinical Procedures* uses the well-known Netter anatomy art as a foundation for reinforcing the relevant **clinical anatomy** needed to successfully **understand and perform basic procedures**. Learn the practical application of this knowledge with **step-by-step guides** incorporating concise text, images, and animation.

Learn more at elsevierhealth.com today!

ELSEVIER

FRANK H. NETTER, MD

ATLAS OF HUMAN ANATOMY



NETTER

7

SEVENTH
EDITION

ELSEVIER

ATLAS OF HUMAN ANATOMY, SEVENTH EDITION

Standard Edition: 978-0-323-39322-5
Professional Edition: 978-0-323-55428-2
International Edition: 978-0-323-39321-8

Copyright © 2019 by Elsevier Inc.

Previous editions copyrighted 2014, 2011, 2006, 2003, 1997, 1989

All rights reserved. No part of this publication may be reproduced or transmitted in any form or by any means, electronic or mechanical, including photocopying, recording, or any information storage and retrieval system, without permission in writing from the publisher. Details on how to seek permission, further information about the Publisher's permissions policies and our arrangements with organizations such as the Copyright Clearance Center and the Copyright Licensing Agency can be found at our website: www.elsevier.com/permissions.

This book and the individual contributions contained in it are protected under copyright by the Publisher (other than as may be noted herein).

Permission to use Netter Art figures may be sought through the website NetterImages.com or by emailing Elsevier's Licensing Department at H.Licensing@elsevier.com.

Notices

Knowledge and best practice in this field are constantly changing. As new research and experience broaden our understanding, changes in research methods, professional practices, or medical treatment may become necessary.

Practitioners and researchers must always rely on their own experience and knowledge in evaluating and using any information, methods, compounds, or experiments described herein. In using such information or methods they should be mindful of their own safety and the safety of others, including parties for whom they have a professional responsibility.

With respect to any drug or pharmaceutical products identified, readers are advised to check the most current information provided (i) on procedures featured or (ii) by the manufacturer of each product to be administered, to verify the recommended dose or formula, the method and duration of administration, and contraindications. It is the responsibility of practitioners, relying on their own experience and knowledge of their patients, to make diagnoses, to determine dosages and the best treatment for each individual patient, and to take all appropriate safety precautions.

To the fullest extent of the law, neither the Publisher nor the authors, contributors, or editors, assume any liability for any injury and/or damage to persons or property as a matter of products liability, negligence or otherwise, or from any use or operation of any methods, products, instructions, or ideas contained in the material herein.

International Standard Book Number: 978-0-323-39322-5

Executive Content Strategist: Elyse O'Grady
Senior Content Development Specialist: Marybeth Thiel
Publishing Services Manager: Patricia Tannian
Senior Project Manager: John Casey
Book Design: Patrick Ferguson



Working together
to grow libraries in
developing countries

CONSULTING EDITORS

Carlos A. G. Machado, MD

Chief Contributing Medical Illustrator

John T. Hansen, PhD

Lead Editor

Professor of Neuroscience
Former Chair of Neurobiology and Anatomy and
Associate Dean for Admissions
University of Rochester Medical Center
Rochester, New York

Brion Benninger, MD, MSc

Professor of Medical Innovation, Technology, &
Research; Professor of Clinical Anatomy
Executive Director, Chair, Medical Anatomy Center
Department of Medical Anatomical Sciences
Faculty College of Dentistry
Western University of Health Sciences
Lebanon Oregon;
Faculty, Sports Medicine Fellows, Orthopaedic and
General Surgery Residencies
Samaritan Health Services, Corvallis, Oregon;
Faculty, Surgery, Orthopedics & Rehabilitation, and Oral
Maxillofacial Surgery
Oregon Health & Science University
Portland, Oregon

Jennifer Brueckner-Collins, PhD

Professor and Vice Chair of Educational Programs
Department of Anatomical Sciences and Neurobiology
University of Louisville School of Medicine
Louisville, Kentucky

Todd M. Hoagland, PhD

Professor
Department of Cell Biology, Neurobiology, and Anatomy
Medical College of Wisconsin
Milwaukee, Wisconsin

R. Shane Tubbs, MS, PA-C, PhD

Chief Scientific Officer, and Vice President
Seattle Science Foundation
Seattle, Washington;
Professor of Anatomy
Department of Anatomical Sciences
St. George's University
Grenada, West Indies;
Centre of Anatomy and Human Identification
Dundee University
United Kingdom

EDITORS OF PREVIOUS EDITIONS

First Edition

Sharon Colacino, PhD

Second Edition

Arthur F. Dalley II, PhD

Third Edition

John T. Hansen, PhD

Fourth Edition

John T. Hansen, PhD
Jennifer K. Brueckner, PhD
Stephen W. Carmichael, PhD, DSc
Thomas R. Gest, PhD
Noelle A. Granger, PhD
Anil H. Waljii, MD, PhD

Fifth Edition

John T. Hansen, PhD
Brion Benninger, MD, MS
Jennifer K. Brueckner, PhD
Stephen W. Carmichael, PhD, DSc
Noelle A. Granger, PhD
R. Shane Tubbs, MS, PA-C, PhD

Sixth Edition

John T. Hansen, PhD
Brion Benninger, MD, MS
Jennifer Brueckner-Collins, PhD
Todd M. Hoagland, PhD
R. Shane Tubbs, MS, PA-C, PhD

INTERNATIONAL ADVISORY BOARD

Hassan Amiralli, MBBS, MS (Surg)

Professor and Chair
Department of Anatomy
American University of Antigua
College of Medicine
Antigua, West Indies

Nihal Apaydin, MD, PhD

Professor, Department of Anatomy
Faculty of Medicine
Vice Director, Brain Research Center
Ankara University
Ankara, Turkey

Keith E. Baynes, MD

Section Chief, MSK and General
Radiology
Associate Professor of Radiology
Medical College of Wisconsin
Milwaukee, Wisconsin

Francisco J. Caycedo, MD

Specialist in Foot and Ankle Surgery
Sports Medicine and
Musculoskeletal Ultrasound
OrthoSports Associates–St.
Vincent’s Birmingham
Birmingham, Alabama

William E. Cullinan, PhD

Professor, Department of
Biomedical Sciences
Director, Integrative Neuroscience
Research Center
Dean, College of Health Sciences
Marquette University
Milwaukee, Wisconsin

Joe Iwanaga, DDS, PhD

Assistant Professor
Division of Gross and Clinical
Anatomy
Department of Anatomy
Kurume University School of
Medicine
Kurume, Japan

Christopher R. Kelly, MD

Clinical Fellow
Division of Cardiology
Columbia University Medical Center
New York, New York

Robert Louis, MD

Director, Skull Base and Pituitary
Tumor Program
Minimally Invasive Brain and Spine
Surgery
Hoag Neurosciences Institute
Newport Beach, California

Virginia T. Lyons, PhD

Associate Professor of Medical
Education
Associate Dean of Preclinical
Year 1
Geisel School of Medicine at
Dartmouth
Hanover, New Hampshire

Thazhumpal Chacko Mathew, PhD

Professor and Vice Dean for
Research, Training, and
Consultation
Faculty of Allied Health Sciences
Health Sciences Centre
Kuwait University
Kuwait City, Kuwait

Paul E. Neumann, MD

Professor, Department of Anatomy
and Neurobiology
Faculty of Medicine
Dalhousie University
Halifax, Nova Scotia, Canada

Eduardo Cotecchia Ribeiro, PhD

Associate Professor of Descriptive
and Topographic Anatomy
Department of Morphology and
Genetics
School of Medicine
Federal University of São Paulo
São Paulo, Brazil

Danielle F. Royer, PhD

Associate Professor
Cell and Developmental Biology
University of Colorado, Anschutz
Medical Campus
Aurora, Colorado

Jonathan Spratt, MB, BChir

Clinical Director of Radiology
Sunderland City Hospitals
Sunderland, United Kingdom
Former Examiner in Anatomy
Royal College of Radiologists
and Royal College of Surgeons of
England
Visiting Professor of Anatomy
St. George’s University
Grenada, West Indies

Susan Standring, MBE, PhD, DSc

Professor Emeritus of Anatomy
Department of Anatomy
King’s College London
London, United Kingdom

Mark E. Sturgill, DO

Pediatric and Neuroradiologist
Radiology Partners
Hopkinsville, Kentucky

William J. Swartz, PhD

Professor of Cell Biology and
Anatomy
Louisiana State University
Health Sciences Center
New Orleans, Louisiana

Kimberly Topp, PT, PhD

Professor and Chair
Department of Physical Therapy and
Rehabilitation Science
Department of Anatomy
University of California, San
Francisco
San Francisco, California

Ivan Varga, PhD

Professor of Anatomy, Histology,
and Embryology
Faculty of Medicine
Comenius University
Bratislava, Slovak Republic

Peter J. Ward, PhD

Associate Professor of Anatomy
West Virginia School of Osteopathic
Medicine
Lewisburg, West Virginia

Robert J. Ward, MD

Chief, Musculoskeletal Imaging and
Intervention
Director, Bone Densitometry
Department of Radiology
Tufts Medical Center
Director, Undergraduate Radiology
Education
Assistant Professor of Radiology and
Orthopedics
Tufts University School of Medicine
Boston, Massachusetts

Kristy A. Weir, PhD

School of Biomedical Sciences
The University of Queensland
St Lucia, Queensland, Australia

NEW TO THIS EDITION

With your copy of the Frank H. Netter, MD, *Atlas of Human Anatomy*, you own a collection of some of the most well-known depictions of human anatomy in medicine and healthcare. In addition to the famous work of Dr. Netter, with your copy of this 7th edition, you also have access to nearly 100 painted pieces by Carlos A. G. Machado, MD, one of the foremost medical illustrators working today. Dr. Machado's contributions to the *Atlas* highlight important views of anatomy that have become more clinically relevant in recent years— anatomic views that have resulted from improved dissection techniques and modern imaging. In addition, you have access to more than 50 carefully selected radiologic images that help bridge the idealized illustrated anatomy with living anatomy viewed in the clinic.

While numerous updates have been made to the illustrated plates and tables to make them easier to learn from, the most significant changes to this edition include:

Introductory Section

To fulfill the requests from many students and fans of Netter's *Atlas*, we have added a new opening section containing several overview plates. These plates provide the very first head-to-toe views in the *Atlas of Human Anatomy*!

Clinical Tables

The *Atlas of Human Anatomy* is the only anatomy atlas illustrated by physicians. Dr. Netter was a surgeon and Dr. Machado is a cardiologist. The views of anatomy in this atlas have always reflected a clinical perspective. In line with this clinical focus, and in congruence with integrated curricula in health and medicine, tables at the end of each regional section highlight the most commonly injured structures, as well as other structures with high clinical significance and commonly covered in anatomy courses. The tables provide students with quick summaries, organized by body system, and note where to best view these key structures in the illustrated plates.

New Art Plates by Dr. Machado

For this edition alone, over 25 new illustrations have been painted by Dr. Machado. Suggestions for new plates of additional anatomic views and concepts are submitted by students, faculty, anatomists, physicians, and others. Sometimes suggestions are solicited at major anatomy conferences with a "What Should Carlos Paint Next?" idea box. Decisions around which new plates are prioritized and given space in a new edition come from discussions among consulting editors. The new plates for this edition are largely those that portray structures with clinical significance (Fascial Columns of the Neck, Deep Veins of the Leg, Hip Bursae, and Vasculature of the Prostate) or those that are difficult to visualize (Infratemporal Fossa)—and, of course, the new additions created for the introductory section.

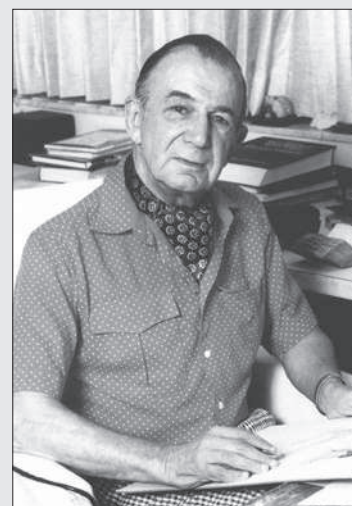
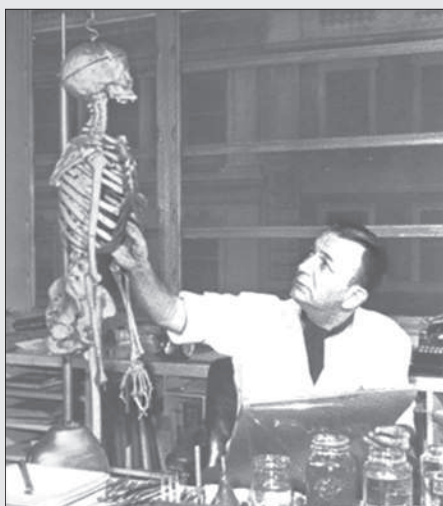
Terminology Updates

The *Atlas of Human Anatomy* uses terminology accepted (in Göttingen, Germany, on September 24, 2016) by the Federative International Programme on Anatomical Terminologies and published as updates to the 1998 *Terminologia Anatomica*. Numerous updates to terminology have been made, so in select cases, former terminology has been included within parentheses to assist with the transition.

New Radiologic Images

Over 50 radiologic images—some completely new views and others replacing existing views using newer imaging tools—are included in this edition. Images have been selected based on their utility to students studying gross anatomy.

Your *Atlas of Human Anatomy* content has been updated, created, and overseen by a team of dedicated and passionate consulting editors, with the help of a stellar international advisory board, and guided by the feedback of many students, educators, anatomists, and clinicians that love Netter's *Atlas*. Please feel free to comment on the Netter Images Facebook page or Twitter feeds or email us directly with your thoughts, suggestions, or questions at NetterAppFeedback@Elsevier.com.



PREFACE TO THE FIRST EDITION

I have often said that my career as a medical artist for almost 50 years has been a sort of “command performance” in the sense that it has grown in response to the desires and requests of the medical profession. Over these many years, I have produced almost 4,000 illustrations, mostly for *The CIBA* (now *Netter*) *Collection of Medical Illustrations* but also for *Clinical Symposia*. These pictures have been concerned with the varied subdivisions of medical knowledge such as gross anatomy, histology, embryology, physiology, pathology, diagnostic modalities, surgical and therapeutic techniques, and clinical manifestations of a multitude of diseases. As the years went by, however, there were more and more requests from physicians and students for me to produce an atlas purely of gross anatomy. Thus, this atlas has come about, not through any inspiration on my part but rather, like most of my previous works, as a fulfillment of the desires of the medical profession.

It involved going back over all the illustrations I had made over so many years, selecting those pertinent to gross anatomy, classifying them and organizing them by system and region, adapting them to page size and space, and arranging them in logical sequence. Anatomy of course does not change, but our understanding of anatomy and its clinical significance does change, as do anatomical terminology and nomenclature. This therefore required much updating of many of the older pictures and even

revision of a number of them in order to make them more pertinent to today’s ever-expanding scope of medical and surgical practice. In addition, I found that there were gaps in the portrayal of medical knowledge as pictorialized in the illustrations I had previously done, and this necessitated my making a number of new pictures that are included in this volume.

In creating an atlas such as this, it is important to achieve a happy medium between complexity and simplification. If the pictures are too complex, they may be difficult and confusing to read; if oversimplified, they may not be adequately definitive or may even be misleading. I have therefore striven for a middle course of realism without the clutter of confusing minutiae. I hope that the students and members of the medical and allied professions will find the illustrations readily understandable, yet instructive and useful.

At one point, the publisher and I thought it might be nice to include a foreword by a truly outstanding and renowned anatomist, but there are so many in that category that we could not make a choice. We did think of men like Vesalius, Leonardo da Vinci, William Hunter, and Henry Gray, who of course are unfortunately unavailable, but I do wonder what their comments might have been about this atlas.

Frank H. Netter, MD
(1906–1991)

FRANK H. NETTER, MD

Frank H. Netter was born in New York City in 1906. He studied art at the Art Students League and the National Academy of Design before entering medical school at New York University, where he received his Doctor of Medicine degree in 1931. During his student years, Dr. Netter’s notebook sketches attracted the attention of the medical faculty and other physicians, allowing him to augment his income by illustrating articles and textbooks. He continued illustrating as a sideline after establishing a surgical practice in 1933, but he ultimately opted to give up his practice in favor of a full-time commitment to art. After service in the United States Army during World War II, Dr. Netter began his long collaboration with the CIBA Pharmaceutical Company (now Novartis Pharmaceuticals). This 45-year partnership resulted in the production of the extraordinary collection of medical art so familiar to physicians and other medical professionals worldwide.

Icon Learning Systems acquired the Netter Collection in July 2000 and continued to update Dr. Netter’s original paintings and to add newly commissioned paintings by artists trained in the style of Dr. Netter. In 2005, Elsevier Inc. purchased the Netter Collection and all publications from Icon Learning Systems. There are now over 50 publications featuring the art of Dr. Netter available through Elsevier Inc.

Dr. Netter’s works are among the finest examples of the use of illustration in the teaching of medical concepts. The 13-book *Netter Collection of Medical Illustrations*, which includes the greater part of the more than 20,000 paintings created by Dr. Netter, became and remains one of the most famous medical works ever published. *The Netter Atlas of Human Anatomy*, first published in 1989, presents the anatomic paintings from the Netter Collection. Now translated into 16 languages, it is the anatomy atlas of choice among medical and health professions students the world over.

The Netter illustrations are appreciated not only for their aesthetic qualities, but, more importantly, for their intellectual content. As Dr. Netter wrote in 1949 “clarification of a subject is the aim and goal of illustration. No matter how beautifully painted, how delicately and subtly rendered a subject may be, it is of little value as a *medical illustration* if it does not serve to make clear some medical point.” Dr. Netter’s planning, conception, point of view, and approach are what inform his paintings and what make them so intellectually valuable.

Frank H. Netter, MD, physician and artist, died in 1991.

ACKNOWLEDGMENTS

Carlos A. G. Machado, MD

I struck luck when joining this golden team of consulting editors exceedingly knowledgeable in the fields of clinical anatomy and medical education. It has been a great honor to work with and be under their guidance, as well as under the highly competent coordination of Elyse O'Grady and Marybeth Thiel, Elsevier's Executive Content Strategist and Senior Content Development Specialist, respectively.

This unique book would not exist without the genius of its creator, Dr. Frank Netter, to whom I owe special thanks, also in the name of generations of students and health professionals who, like myself, have learned so much from his incommensurable body of work.

I dedicate my work and express my most sincere thanks to my beloved parents, Carlos and Neide, who provided me with the foundation of my education; to my patient wife, Adriana, and talented daughter, Beatriz, for their love and support; to the students, teachers, and health professionals who rely on my work to learn and teach; to all the body donors and living friends that have respectively been the subjects of my studies and models of most of the illustrations I have created for the *Atlas*; and to my teachers Eugênio Cavalcante, Mário Fortes, and Paulo Carneiro for taking my interest in human/clinical anatomy much further.

John T. Hansen, PhD

At Elsevier I would like to thank Marybeth Thiel, Senior Content Development Specialist, Elyse O'Grady, Executive Content Strategist, John Casey, Senior Project Manager, Patricia Tannian, Publishing Services Manager, Julia Dummitt, Design Manager, Karen Giacomucci, Illustration Buyer, and Madelene Hyde, Publishing Director, for their continuous support and meticulous attention to detail during the development of this seventh edition of the *Atlas of Human Anatomy*. They, along with the entire editorial, production, design, and marketing teams at Elsevier have been a delight to work with and to know. I also wish to thank my consulting editors for their insightful and constructive suggestions as we strive to make every new edition of the *Atlas* better. I am also indebted to Carlos Machado for his superb artistic skill in producing and updating a number of plates that appear in this latest edition of the *Atlas*. His renderings of human anatomy are the perfect complement to the Netter images. In addition to my fellow editors, I wish to express my thanks to my faculty

colleagues at Rochester and to all my past and present students who have provided generous and constructive feedback and have enriched my life. Finally, I am indebted to my entire family for their continued support and especially to my wife, Paula. Their love and encouragement sustains me and is the source of all the happiness and joy I know.

Brion Benninger, MD, MSc

Every day I am thankful for my wife, Alison, and son, Jack, for the laughs we have as a family, often from my follies, which is such a tonic. I thank Elsevier, especially Marybeth Thiel, Elyse O'Grady, and Madelene Hyde for their professionalism and guidance, enabling John Hansen, Carlos Machado, and my fellow coeditors to work in a unique and dynamic environment. I thank those clinicians who trained me, especially my early gifted surgeon/anatomist/teacher mentors, Drs. Gerald Tressidor and Harold Ellis CBE (Cambridge & Guy's Hospital); Dr. S. Standing, who embodies professionalism and displays fortitude; Drs. P. Crone and J. Heatherington, and the University Board for their stellar support; my past and future students and patients; and clinical colleagues from all corners of the world who keep anatomy dynamic, fresh, and wanting more. Special thanks to Jim Diegel and Erik Szeto, friends, mentors and fellow visionaries who also see "outside the box," challenging status quo. A heartfelt tribute to my late mentors, friends, and sister, Jim McDaniel, Bill Bryan, and Gail Hendricks, all who represent what is good in teaching, caring, and healing. They made this world a wee bit better. Lastly, I thank my mother for her love of education and equality and my father for his inquisitive and creative mind.

Jennifer Brueckner-Collins, PhD

Many thanks to the Elsevier team, particularly Marybeth Thiel and Elyse O'Grady, for their guidance and expertise during our preparation of the seventh edition. It is always an honor to work with Carlos Machado, whose passion for and mastery of the art of clinical anatomy and medicine never cease to amaze me. I am forever indebted to Brian MacPherson, who has served as a teacher, mentor, and friend to me for more than 20 years....you showed me what it means to be a true educator and I have been so fortunate to have the opportunity to build a career based on those principles. To Kurt and Lincoln, you are my inspiration....my world...my life and I love you to the snow moon and back.

Todd M. Hoagland, PhD

It is a privilege to teach clinical human anatomy and I am eternally grateful to all the body donors and their families for enabling healthcare professionals to train in the dissection laboratory. It is my honor to work with outstanding medical students and colleagues at the Medical College of Wisconsin. I am grateful to John Hansen and the professionals of the Elsevier team for the opportunity to be a steward of the incomparable Netter's *Atlas*. Marybeth Thiel and Elyse O'Grady were especially helpful and a pleasure to work with. It was an honor to collaborate with the brilliant Carlos Machado and all the consulting editors. I thank Bill Swartz and Mark Moss for being outstanding mentors, and I thank all of the graduate students I've worked with, especially Rebecca Lufner. I am deeply appreciative of Stan Hillman and Jack O'Malley for inspiring me with masterful teaching and rigorous expectations. I am indebted to Gary Kolesari and Richard Hoyt Jr. for

helping me become a competent clinical anatomist, and to Rob Bouchie for his camaraderie. I am most grateful to my brother, Bill, for his unwavering optimism and gregarious nature. I thank my mother, Liz, for her dedication and love and for instilling a strong work ethic. Finally, I am humbled by my two awesome children, Ella and Caleb, for helping me redefine love, wonder, and joy.

R. Shane Tubbs, MS, PA-C, PhD

Elsevier and the Netter team have once again been a joy to work with. I thank Elyse O'Grady, Marybeth Thiel, and John Casey for their tremendous work on this edition. In addition, Carlos Machado has again added his expertise to bringing his anatomical images to life. As always, my work is inspired by my beautiful wife, Susan, and son, Isaiah. Lastly, I am indebted to my parents, Richard and Karon Tubbs, who supported me in my career to better understand the human body.

CONTENTS

SECTION 1 INTRODUCTION • Plates 1-7

Introduction • Plates 1-7

- 1 Body Planes and Terms of Relationship
- 2 Surface Anatomy: Regions (Anterior View of Female)
- 3 Surface Anatomy: Regions (Posterior View of Male)
- 4 Major Arteries and Pulse Points
- 5 Major Systemic Veins of the Cardiovascular System
- 6 General Organization of the Nervous System
- 7 Overview of the Lymphatic System

Electronic Bonus Plates • Plates BP1-BP16

- BP 1 Cross Section of Skin
- BP 2 Pilosebaceous Unit
- BP 3 Major Body Cavities
- BP 4 Skeletal System: Axial and Appendicular Skeletons
- BP 5 Types of Synovial Joints
- BP 6 Joints: Connective Tissues and Articular Cartilage
- BP 7 Architecture of Bone
- BP 8 Muscular System
- BP 9 Overview of the Gastrointestinal System
- BP 10 Overview of the Endocrine System
- BP 11 Neurons and Synapses
- BP 12 Features of a Typical Peripheral Nerve
- BP 13 Sites of Visceral Referred Pain
- BP 14 General Organization of the Cardiovascular System
- BP 15 Cardiovascular System: Composition of Blood
- BP 16 Arterial Wall

SECTION 2 HEAD AND NECK • Plates 8-160

Surface Anatomy • Plate 8

- 8 Head and Neck: Surface Anatomy

Superficial Head and Neck • Plates 9-10

- 9 Cutaneous Nerves of Head and Neck
- 10 Superficial Arteries and Veins of Face and Scalp

Bones and Ligaments • Plates 11-30

- 11 Skull: Anterior View
- 12 Skull: Radiographs
- 13 Skull: Lateral View
- 14 Skull: Lateral Radiograph
- 15 Skull: Midsagittal Section
- 16 Calvaria
- 17 Cranial Base: Inferior View
- 18 Cranial Base: Superior View
- 19 Foramina and Canals of Cranial Base: Inferior View
- 20 Foramina and Canals of Cranial Base: Superior View
- 21 Skull of Newborn
- 22 Bony Framework of Head and Neck
- 23 Pterygoid Fossae
- 24 Mandible
- 25 Temporomandibular Joint
- 26 Cervical Vertebrae: Atlas and Axis
- 27 Cervical Vertebrae (continued)
- 28 Cervical Vertebrae: Uncovertebral Joints
- 29 External Craniocervical Ligaments
- 30 Internal Craniocervical Ligaments

Neck • Plates 31-41

- 31 Muscles of Facial Expression: Lateral View
- 32 Muscles of Neck: Anterior View
- 33 Fascial Layers of Neck
- 34 Cervical Fasciae
- 35 Infrahyoid and Suprahyoid Muscles
- 36 Muscles of Neck: Lateral View
- 37 Anterior and Lateral Cervical Muscles
- 38 Superficial Veins and Cutaneous Nerves of Neck
- 39 Nerves and Vessels of Neck
- 40 Nerves and Vessels of Neck (continued)
- 41 Carotid Arteries

Nasal Region • Plates 42-64

- 42 Nose
- 43 Lateral Wall of Nasal Cavity
- 44 Lateral Wall of Nasal Cavity (continued)
- 45 Medial Wall of Nasal Cavity (Nasal Septum)
- 46 Nerves of Nasal Cavity
- 47 Arteries of Nasal Cavity: Bony Nasal Septum Turned Up
- 48 Nerves of Nasal Cavity: Bony Nasal Septum Turned Up
- 49 Nose and Maxillary Sinus: Transverse Section
- 50 Paranasal Sinuses: Coronal and Transverse Sections
- 51 Paranasal Sinuses: Parasagittal Views
- 52 Paranasal Sinuses: Changes with Age

53	Salivary Glands
54	Facial Nerve Branches and Parotid Gland
55	Muscles Involved in Mastication
56	Muscles Involved in Mastication (continued)
57	Maxillary Artery
58	Proximal Maxillary and Superficial Temporal Arteries
59	Mandibular Nerve (CN V ₃)
60	Superior View of Infratemporal Fossa
61	Ophthalmic (CN V ₁) and Maxillary (CN V ₂) Nerves
62	Autonomic Innervation of Nasal Cavity
63	Nerves and Arteries of the Deep Face
64	Orientation of Nerves and Vessels of the Cranial Base

Oral Region • Plates 65-74

65	Inspection of Oral Cavity
66	Afferent Innervation of Oral Cavity and Tongue
67	Roof of Oral Cavity
68	Tongue and Salivary Glands: Sections
69	Floor of Oral Cavity
70	Tongue
71	Tongue (continued)
72	Fauces
73	Teeth
74	Teeth (continued)

Pharynx • Plates 75-86

75	Muscles of Pharynx: Partially Opened Posterior View
76	Posterior View of Pharynx: Nerves and Vessels
77	Pharynx: Medial View
78	Muscles of Pharynx: Medial View
79	Pharynx: Opened Posterior View
80	Pharyngoesophageal Junction
81	Muscles of Pharynx: Lateral View
82	Nerves of Oral, Head, and Neck Regions
83	Arteries of Oral and Pharyngeal Regions
84	Veins of Face and Neck Regions
85	Lymph Vessels and Nodes of Head and Neck
86	Lymph Vessels and Nodes of Pharynx and Tongue

Thyroid Gland and Larynx • Plates 87-93

87	Thyroid Gland: Anterior View
88	Thyroid Gland and Pharynx: Posterior View
89	Parathyroid Glands
90	Cartilages of Larynx
91	Intrinsic Muscles of Larynx
92	Nerves and Coronal Section of Larynx
93	Action of Intrinsic Muscles of Larynx

Orbit and Contents • Plates 94-104

94	Eyelids
95	Lacrimal Apparatus
96	Extrinsic Eye Muscles
97	Nerves of Orbit
98	Superior and Anterior Views of Orbit
99	Arteries and Veins of Orbit and Eyelids
100	Eyeball: Transverse Section
101	Anterior and Posterior Chambers of Eyeball
102	Lens and Supporting Structures
103	Intrinsic Arteries and Veins of Eye
104	Vascular Supply of Eye

Ear • Plates 105-110

105	Ear and Course of Sound in Cochlea
106	External Ear and Tympanic Cavity
107	Tympanic Cavity
108	Bony and Membranous Labyrinths
109	Bony and Membranous Labyrinths (continued)
110	Orientation of Labyrinths in Skull

Meninges and Brain • Plates 111-126

111	Meninges and Diploic Veins
112	Meningeal Arteries
113	Meninges and Superficial Cerebral Veins
114	Dural Venous Sinuses: Sagittal Section
115	Dural Venous Sinuses (continued)
116	Brain: Lateral Views
117	Brain: Medial Views
118	Brain: Inferior View
119	Ventricles of Brain
120	Circulation of Cerebrospinal Fluid
121	Basal Nuclei (Ganglia)
122	Thalamus and Related Structures
123	Hippocampus and Fornix
124	Brain Stem
125	Ventricles and Cerebellum
126	Cerebellum

Cranial and Cervical Nerves • Plates 127-146

127	Cranial Nerve Nuclei in Brain Stem: Schema
128	Cranial Nerve Nuclei in Brain Stem: Schema (continued)
129	Cranial Nerves (Motor and Sensory Distribution): Schema
130	Olfactory Nerve (CN I): Schema
131	Optic Nerve (CN II) (Visual Pathway): Schema

132	Oculomotor (CN III), Trochlear (CN IV), and Abducens (CN VI) Nerves: Schema
133	Trigeminal Nerve (CN V): Schema
134	Facial Nerve (CN VII): Schema
135	Vestibulocochlear Nerve (CN VIII): Schema
136	Glossopharyngeal Nerve (CN IX): Schema
137	Vagus Nerve (CN X): Schema
138	Accessory Nerve (CN XI): Schema
139	Hypoglossal Nerve (CN XII): Schema
140	Cervical Plexus: Schema
141	Autonomic Nerves in Neck
142	Autonomic Nerves in Head
143	Ciliary Ganglion: Schema
144	Pterygopalatine and Submandibular Ganglia: Schema
145	Otic Ganglion: Schema
146	Taste Pathways: Schema

Cerebral Vasculature • Plates 147-158

147	Arteries to Brain and Meninges
148	Internal Carotid Artery in Petrous Part of Temporal Bone
149	Arteries to Brain: Schema
150	Arteries of Brain: Inferior Views
151	Cerebral Arterial Circle (of Willis)
152	Arteries of Brain: Frontal View and Section
153	Arteries of Brain: Lateral and Medial Views
154	Arteries of Posterior Cranial Fossa
155	Veins of Posterior Cranial Fossa
156	Deep Veins of Brain
157	Subependymal Veins of Brain
158	Hypothalamus and Hypophysis

Regional Imaging • Plates 159-160

159	Cranial Imaging (MRA and MRV)
160	Cranial Imaging (MRI)

Structures with High Clinical Significance • Tables 2.1-2.3

Muscle Tables • Tables 2.4-2.9

Electronic Bonus Plates • Plates BP17-BP32

BP17	3D Skull Reconstruction CTs
BP18	Degenerative Changes in Cervical Vertebrae
BP19	Atlantooccipital Junction
BP20	Muscles of Facial Expression: Anterior View
BP21	Musculature of Face
BP22	Paranasal Sinuses

BP23	Subclavian Artery
BP24	Opening of the Mandible
BP25	Afferent Innervation of Oral Cavity and Pharynx
BP26	Fasciae of Orbit and Eyeball
BP27	Tympanic Cavity
BP28	Anatomy of the Pediatric Ear
BP29	Auditory Tube (Eustachian)
BP30	Arteries and Veins of Hypothalamus and Hypophysis
BP31	Cranial Imaging (MRV and MRA)
BP32	Axial and Coronal MRIs of Brain

SECTION 3 BACK AND SPINAL CORD • Plates 161-186

Surface Anatomy • Plate 161

161	Back: Surface Anatomy
-----	-----------------------

Bones and Ligaments • Plates 162-168

162	Vertebral Column
163	Thoracic Vertebrae
164	Lumbar Vertebrae
165	Vertebrae: Radiograph and MRI
166	Sacrum and Coccyx
167	Vertebral Ligaments: Lumbosacral Region
168	Vertebral Ligaments: Lumbar Region

Spinal Cord • Plates 169-179

169	Spinal Cord and Anterior Rami
170	Relation of Spinal Nerve Roots to Vertebrae
171	Dermatomes
172	Sympathetic Nervous System: Schema
173	Parasympathetic Nervous System: Schema
174	Spinal Meninges and Nerve Roots
175	Spinal Nerve Origin: Cross Sections
176	Arteries of Spinal Cord: Schema
177	Arteries of Spinal Cord: Intrinsic Distribution
178	Veins of Spinal Cord and Vertebral Column
179	Veins of Vertebral Column: Vertebral Veins

Muscles and Nerves • Plates 180-184

180	Muscles of Back: Superficial Layer
181	Muscles of Back: Intermediate Layer
182	Muscles of Back: Deep Layer
183	Nerves of Back
184	Suboccipital Triangle

Cross-Sectional Anatomy • Plates 185-186

185	Lumbar Region of Back: Cross Section
186	Typical Thoracic Spinal Nerve: Cross Section

Structures with High Clinical Significance • Table 3.1

Muscle Tables • Tables 3.2-3.3

Electronic Bonus Plates • Plates BP33-BP43

BP33	Vertebral Ligaments
BP34	Cervical Spine: Radiographs
BP35	Cervical Spine: MRI and Radiograph
BP36	Thoracolumbar Spine: Lateral Radiograph
BP37	Lumbar Vertebrae: Radiographs
BP38	Lumbar Spine: MRIs
BP39	Sympathetic Nervous System: General Topography
BP40	Parasympathetic Nervous System: General Topography
BP41	Cholinergic and Adrenergic Synapses: Schema
BP42	Vertebral Veins: Detail Showing Venous Communications
BP43	Spinal Cord Cross Sections: Fiber Tracts

SECTION 4 THORAX • Plates 187-248

Surface Anatomy • Plate 187

187	Thorax: Surface Anatomy
-----	-------------------------

Mammary Gland • Plates 188-191

188	Mammary Gland
189	Arteries of Mammary Gland
190	Lymph Vessels and Nodes of Mammary Gland
191	Lymphatic Drainage of Breast

Body Wall • Plates 192-201

192	Bony Framework of Thorax
193	Ribs and Associated Joints
194	Anterior Thoracic Wall
195	Anterior Thoracic Wall (continued)
196	Anterior Thoracic Wall: Internal View
197	Intercostal Nerves and Arteries
198	Veins of Internal Thoracic Wall
199	Phrenic Nerve
200	Respiratory Diaphragm: Thoracic Surface
201	Respiratory Diaphragm: Abdominal Surface

Lungs • Plates 202-214

202	Topography of Lungs: Anterior View
203	Topography of Lungs: Posterior View
204	Lungs in Situ: Anterior View
205	Lungs: Medial Views
206	Bronchopulmonary Segments
207	Bronchopulmonary Segments (continued)
208	Trachea and Major Bronchi
209	Bronchi and Intrapulmonary Airways
210	Great Vessels of Superior Mediastinum
211	Bronchial Arteries and Veins
212	Lymph Vessels and Nodes of Lung
213	Autonomic Nerves of Thorax
214	Innervation of Tracheobronchial Tree: Schema

Heart • Plates 215-233

215	Heart in Situ
216	Heart: Anterior Exposure
217	Heart: Radiographs and CT Angiogram; Auscultation of Heart
218	Heart: Base and Diaphragmatic Surface
219	Pericardial Sac
220	Mediastinum: Cross Section
221	Thorax: Coronal Section of Heart and Ascending Aorta
222	Coronary Arteries and Cardiac Veins
223	Coronary Arteries: Imaging
224	Right Atrium and Ventricle
225	Left Atrium and Ventricle
226	Valves and Fibrous Skeleton of Heart
227	Valves and Fibrous Skeleton of Heart (continued)
228	Atria, Ventricles, and Interventricular Septum
229	Conducting System of Heart
230	Nerves of Thorax
231	Innervation of Heart: Schema
232	Innervation of Blood Vessels: Schema
233	Prenatal and Postnatal Circulation

Mediastinum • Plates 234-243

234	Mediastinum: Right Lateral View
235	Mediastinum: Left Lateral View
236	Esophagus in Situ
237	Topography and Constrictions of Esophagus
238	Musculature of Esophagus
239	Esophagogastric Junction
240	Arteries of Esophagus
241	Veins of Esophagus
242	Lymph Vessels and Nodes of Esophagus
243	Nerves of Esophagus

Regional Scans • Plate 244

244 Chest Scans: Axial CT Images

Cross-Sectional Anatomy • Plates 245-248

245 Cross Section of Thorax at T3 Level
246 Cross Section of Thorax at T3-4 Disc Level
247 Cross Section of Thorax at T4-5 Disc Level
248 Cross Section of Thorax at T7 Level

Structures with High Clinical Significance • Tables 4.1-4.2

Muscle Table • Table 4.3

Electronic Bonus Plates • Plates BP44-BP57

BP44 Respiratory System
BP45 Cervical Ribs and Related Anomalies
BP46 Muscle Attachments of Ribs
BP47 Muscles of Respiration
BP48 Intrapulmonary Airways: Schema
BP49 Intrapulmonary Blood Circulation: Schema
BP50 Gas Exchange
BP51 Anterior Aspect of Heart
BP52 Coronary Arteries: Right Anterior Oblique Views with Arteriograms
BP53 Coronary Arteries and Cardiac Veins: Variations
BP54 Intrinsic Nerves and Variations in Nerves of Esophagus
BP55 Arteries of Esophagus: Variations
BP56 Thorax: Coronal Section (Midaxillary Line, Tracheal Bifurcation, Left Atrium)
BP57 Thorax: Coronal CTs

SECTION 5 ABDOMEN • Plates 249-332

Surface Anatomy • Plate 249

249 Abdomen: Surface Anatomy

Body Wall • Plates 250-269

250 Bony Framework of Abdomen
251 Regions and Planes of Abdomen
252 Anterior Abdominal Wall: Superficial Dissection
253 Anterior Abdominal Wall: Intermediate Dissection
254 Anterior Abdominal Wall: Deep Dissection
255 Rectus Sheath: Cross Section
256 Anterior Abdominal Wall: Internal View

257	Posterolateral Abdominal Wall
258	Arteries of Anterior Abdominal Wall
259	Veins of Anterior Abdominal Wall
260	Nerves of Anterior Abdominal Wall
261	Thoracoabdominal Nerves
262	Inguinal Region: Dissections
263	Inguinal Canal and Spermatic Cord
264	Femoral Sheath and Inguinal Canal
265	Posterior Abdominal Wall: Internal View
266	Arteries of Posterior Abdominal Wall
267	Veins of Posterior Abdominal Wall
268	Lymph Vessels and Nodes of Posterior Abdominal Wall
269	Nerves of Posterior Abdominal Wall

Peritoneal Cavity • Plates 270-275

270	Greater Omentum and Abdominal Viscera
271	Mesenteric Relations of Intestines
272	Mesenteric Relations of Intestines (continued)
273	Omental Bursa: Stomach Reflected
274	Omental Bursa: Cross Section
275	Peritoneum of Posterior Abdominal Wall

Viscera (Gut) • Plates 276-283

276	Stomach in Situ
277	Mucosa of Stomach
278	Duodenum in Situ
279	Mucosa and Musculature of Small Intestine
280	Ileocecal Region
281	Ileocecal Region (continued)
282	(Vermiform) Appendix
283	Mucosa and Musculature of Large Intestine

Viscera (Accessory Organs) • Plates 284-289

284	Surfaces and Bed of Liver
285	Liver in Situ: Vascular and Duct Systems
286	Liver Structure: Schema
287	Gallbladder, Extrahepatic Bile Ducts, and Pancreatic Duct
288	Pancreas in Situ
289	Spleen

Visceral Vasculature • Plates 290-299

290	Arteries of Stomach, Liver, and Spleen
291	Arteries of Liver, Pancreas, Duodenum, and Spleen
292	Celiac Arteriogram and CT Angiogram
293	Arteries of Duodenum and Head of Pancreas
294	Arteries of Small Intestine
295	Arteries of Large Intestine

296	Veins of Stomach, Duodenum, Pancreas, and Spleen
297	Veins of Small Intestine
298	Veins of Large Intestine
299	Hepatic Portal Vein Tributaries: Portacaval Anastomoses

Innervation • Plates 300-310

300	Autonomic Nerves and Ganglia
301	Autonomic Innervation of Stomach and Duodenum
302	Autonomic Innervation of Stomach and Duodenum (continued)
303	Autonomic Innervation of Esophagus, Stomach, and Duodenum: Schema
304	Autonomic Innervation of Small Intestine
305	Autonomic Innervation of Large Intestine
306	Autonomic Innervation of Intestines: Schema
307	Autonomic Reflex Pathways: Schema
308	Enteric Plexuses of Intestine
309	Autonomic Innervation of Liver: Schema
310	Autonomic Innervation of Pancreas: Schema

Kidneys and Suprarenal Glands • Plates 311-324

311	Kidneys in Situ: Anterior Views
312	Kidneys in Situ: Posterior Views
313	Renal Artery and Vein in Situ
314	Gross Structure of Kidney
315	Intrarenal Arteries and Renal Segments
316	Ureters in Abdomen and Pelvis
317	Arteries of Ureters and Urinary Bladder
318	Renal Fasciae
319	Lymph Vessels and Nodes of Kidneys and Urinary Bladder
320	Autonomic Nerves of Kidneys, Ureters, and Urinary Bladder
321	Autonomic Innervation of Kidneys and Upper Ureters: Schema
322	Autonomic Nerves of Suprarenal Glands: Dissection and Schema
323	Arteries and Veins of Suprarenal Glands in Situ
324	Abdominal Wall and Viscera: Paramedian (Parasagittal) Section

Lymphatics • Plate 325

325	Abdominal and Pelvic Lymphatics: Schema
-----	---

Regional Scans • Plates 326-327

326	Abdominal Scans: Axial CT Images
327	Abdominal Scans: Axial CT Images (continued)

Cross-Sectional Anatomy • Plates 328-332

328	Cross Section at T10, Esophagogastric Junction
329	Cross Section at T12, Inferior to Xiphoid
330	Cross Section at T12–L1, Intervertebral Disc
331	Cross Section at L1–2, Intervertebral Disc
332	Cross Section at L3–4

Structures with High Clinical Significance • Tables 5.1-5.2

Muscle Table • Table 5.3

Electronic Bonus Plates • Plates BP58-BP87

BP58	Inguinal and Femoral Regions
BP59	Indirect Inguinal Hernia
BP60	Variations in Position and Contour of Stomach in Relation to Body Habitus
BP61	Layers of Duodenal Wall
BP62	CT and MRCP Showing Appendix, Gallbladder, and Ducts; Nerve Branches of Hepatic Artery
BP63	Topography of Liver
BP64	Variations in Form of Liver
BP65	Sigmoid Colon: Variations in Position
BP66	Variations in Arterial Supply to Cecum and Posterior Peritoneal Attachment of Cecum
BP67	Variations in Pancreatic Duct
BP68	Variations in Cystic, Hepatic, and Pancreatic Ducts
BP69	Variations in Cystic Arteries
BP70	Variations in Hepatic Arteries
BP71	Variations and Anomalies of Hepatic Portal Vein
BP72	Variations in Celiac Trunk
BP73	Variations in Colic Arteries
BP74	Variations in Colic Arteries (continued)
BP75	Variations in Renal Artery and Vein
BP76	Histology of Renal Corpuscle
BP77	Nephron and Collecting Tubule: Schema
BP78	Blood Vessels in Parenchyma of Kidney: Schema
BP79	Lymph Vessels and Nodes of Stomach
BP80	Lymph Vessels and Nodes of Pancreas
BP81	Lymph Vessels and Nodes of Small Intestine
BP82	Lymph Vessels and Nodes of Large Intestine
BP83	Lymph Vessels and Nodes of Liver
BP84	Schematic Cross Section of Abdomen at Middle T12
BP85	Transverse Section of Abdomen: Level of L5, Near Transtubercular Plane
BP86	Transverse Section of Abdomen: Level of S1, Anterior Superior Iliac Spine
BP87	Axial CT Image of Upper Abdomen

SECTION 6 PELVIS AND PERINEUM • Plates 333-401

Surface Anatomy • Plate 333

- 333 Pelvis and Perineum: Surface Anatomy

Bones and Ligaments • Plates 334-338

- 334 Bony Framework of Pelvis
- 335 Male and Female Pelvis: Radiographs
- 336 Sex Differences of Pelvis: Measurements
- 337 Bones and Ligaments of Pelvis
- 338 Bones and Ligaments of Pelvis (continued)

Pelvic Floor and Contents • Plates 339-349

- 339 Pelvic Diaphragm: Female
- 340 Pelvic Diaphragm: Female (continued)
- 341 Pelvic Diaphragm: Female (continued)
- 342 Pelvic Diaphragm: Male
- 343 Pelvic Diaphragm: Male (continued)
- 344 Pelvic Contents: Female
- 345 Pelvic Viscera and Perineum: Female
- 346 Pelvic Viscera: Female
- 347 Endopelvic Fascia and Potential Spaces
- 348 Pelvic Contents: Male
- 349 Pelvic Viscera and Perineum: Male

Urinary Bladder • Plates 350-352

- 350 Urinary Bladder: Orientation and Supports
- 351 Female Sphincters
- 352 Urinary Bladder: Female and Male

Uterus, Vagina, and Supporting Structures • Plates 353-357

- 353 Uterus, Vagina, and Supporting Structures
- 354 Uterus: Fascial Ligaments
- 355 Uterus and Adnexa
- 356 Female Pelvic Relationships
- 357 Pelvic Ligaments

Perineum and External Genitalia: Female • Plates 358-361

- 358 Female Perineum and External Genitalia (Pudendum or Vulva)
- 359 Female Perineum (Superficial Dissection)
- 360 Female Perineum and Deep Perineum
- 361 Female Perineal Spaces

Perineum and External Genitalia: Male • Plates 362-369

362	Male Perineum and External Genitalia (Superficial Dissection)
363	Male Perineum and External Genitalia (Deeper Dissection)
364	Penis
365	Male Perineal Spaces
366	Prostate Gland and Seminal Vesicles
367	Urethra
368	Descent of Testis
369	Scrotum and Contents

Homologues of Genitalia • Plates 370-371

370	Homologues of External Genitalia
371	Homologues of Internal Genitalia

Testis, Epididymis, and Ductus Deferens • Plate 372

372	Testis, Epididymis, and Ductus Deferens
-----	---

Rectum • Plates 373-378

373	Rectum in Situ: Female and Male
374	Ischioanal Fossae
375	Rectum and Anal Canal
376	Anorectal Musculature
377	External Anal Sphincter Muscle: Perineal Views
378	Actual and Potential Perineopelvic Spaces

Regional Scan • Plate 379

379	Pelvic Scans: Sagittal T2-Weighted MRIs
-----	---

Vasculature • Plates 380-390

380	Arteries of Rectum and Anal Canal: Male Posterior View
381	Veins of Rectum and Anal Canal: Female Anterior View
382	Arteries and Veins of Pelvic Organs: Female Anterior View
383	Arteries and Veins of Testis: Anterior View
384	Arteries of Pelvis: Female
385	Arteries and Veins of Pelvis: Male
386	Arteries and Veins of Perineum and Uterus
387	Arteries and Veins of Perineum: Male
388	Lymph Vessels and Nodes of Pelvis and Genitalia: Female
389	Lymph Vessels and Nodes of Perineum: Female
390	Lymph Vessels and Nodes of Pelvis and Genitalia: Male

Innervation • Plates 391-399

391	Nerves of External Genitalia: Male
392	Nerves of Pelvic Viscera: Male
393	Nerves of Perineum: Male

394	Nerves of Pelvic Viscera: Female
395	Nerves of Perineum and External Genitalia: Female
396	Neuropathways in Parturition
397	Innervation of Female Reproductive Organs: Schema
398	Innervation of Male Reproductive Organs: Schema
399	Innervation of Urinary Bladder and Lower Ureter: Schema

Cross-Sectional Anatomy • Plates 400-401

400	Male Pelvis: Cross Section of Bladder–Prostate Gland Junction
401	Female Pelvis: Cross Section of Vagina and Urethra

Structures with High Clinical Significance • Tables 6.1-6.2

Muscle Tables • Tables 6.3-6.4

Electronic Bonus Plates • Plates BP88-BP98

BP88	Fasciae of Male and Female Pelvis and Perineum
BP89	Male and Female Cystourethrograms
BP90	Female Urethra
BP91	Genetics of Reproduction
BP92	Menstrual Cycle
BP93	Testes
BP94	Uterine Development
BP95	Ovary, Ova, and Follicles
BP96	Variations in Hymen
BP97	Cross Section Through Prostate
BP98	Arteries and Veins of Pelvis: Male

SECTION 7 UPPER LIMB • Plates 402-470

Surface Anatomy • Plate 402

402	Upper Limb: Surface Anatomy
-----	-----------------------------

Cutaneous Anatomy • Plates 403-407

403	Dermatomes of Upper Limb and Segmental Nerve Function
404	Cutaneous Innervation of Upper Limb
405	Cutaneous Nerves and Superficial Veins of Proximal Upper Limb
406	Cutaneous Nerves and Superficial Veins of Forearm and Hand
407	Lymph Vessels and Nodes of Upper Limb

Shoulder and Axilla • Plate 408-420

- 408 Clavicle and Sternoclavicular Joint
- 409 Humerus and Scapula: Anterior Views
- 410 Humerus and Scapula: Posterior Views
- 411 Shoulder: Anteroposterior Radiograph
- 412 Shoulder with Details of Glenohumeral Joint
- 413 Muscles of Shoulder
- 414 Axilla: Posterior Wall
- 415 Muscles of Rotator (Compressor) Cuff
- 416 Pectoral, Clavipectoral, and Axillary Fasciae
- 417 Scapulothoracic and Shoulder Dissection
- 418 Axillary Artery and Anastomoses Around Scapula
- 419 Axilla: Anterior View
- 420 Brachial Plexus: Schema

Arm • Plates 421-425

- 421 Muscles of Arm: Anterior Views
- 422 Muscles of Arm: Posterior Views
- 423 Brachial Artery in Situ
- 424 Arteries of Arm and Proximal Forearm
- 425 Arm: Serial Cross Sections

Elbow and Forearm • Plates 426-441

- 426 Bones of Elbow
- 427 Elbow: Radiographs
- 428 Ligaments of Elbow
- 429 Bones of Forearm
- 430 Individual Muscles of Forearm: Rotators of Radius
- 431 Individual Muscles of Forearm: Extensors of Wrist and Digits
- 432 Individual Muscles of Forearm: Flexors of Wrist
- 433 Individual Muscles of Forearm: Flexors of Digits
- 434 Muscles of Forearm (Superficial Layer): Posterior View
- 435 Muscles of Forearm (Deeper Layer): Posterior View
- 436 Muscles of Forearm (Superficial Layer): Anterior View
- 437 Muscles of Forearm (Intermediate Layer): Anterior View
- 438 Muscles of Forearm (Deep Layer): Anterior View
- 439 Attachments of Muscles of Forearm: Anterior View
- 440 Attachments of Muscles of Forearm: Posterior View
- 441 Forearm: Serial Cross Sections, Anterior View

Wrist and Hand • Plates 442-461

- 442 Carpal Bones
- 443 Movements of Wrist
- 444 Ligaments of Wrist
- 445 Ligaments of Wrist (continued)
- 446 Bones of Wrist and Hand

447	Wrist and Hand: Radiographs
448	Metacarpophalangeal and Interphalangeal Ligaments
449	Wrist and Hand: Superficial Palmar Dissections
450	Wrist and Hand: Deeper Palmar Dissections
451	Lumbrical Muscles and Bursae, Spaces, and Sheaths: Schema
452	Flexor Tendons, Arteries, and Nerves at Wrist
453	Bursae, Spaces, and Tendon Sheaths of Hand
454	Flexor and Extensor Tendons in Fingers
455	Intrinsic Muscles of Hand
456	Arteries and Nerves of Hand: Palmar Views
457	Wrist and Hand: Superficial Dissection
458	Wrist and Hand: Superficial Dorsal Dissection
459	Nerves and Arteries of Dorsal Hand and Wrist
460	Extensor Tendons at Wrist
461	Fingers

Neurovasculature • Plates 462-469

462	Cutaneous Innervation of Wrist and Hand
463	Arteries and Nerves of Upper Limb: Anterior View
464	Nerves of Upper Limb
465	Musculocutaneous Nerve: Anterior View
466	Median Nerve
467	Ulnar Nerve
468	Radial Nerve in Arm and Nerves of Posterior Shoulder: Posterior View
469	Radial Nerve in Forearm and Hand

Regional Imaging • Plate 470

470	Shoulder MRI and CT Scan
-----	--------------------------

Structures with High Clinical Significance • Tables 7.1-7.2

Muscle Tables • Tables 7.3-7.6

Electronic Bonus Plates • Plates BP99-BP106

BP99	Veins of Upper Limb
BP100	Arteries of Arm and Proximal Forearm
BP101	Arteries of Forearm and Hand
BP102	Ligaments of Wrist
BP103	Flexor and Extensor Zones of Hand
BP104	Section Through Metacarpal and Distal Carpal Bones
BP105	Cross Section of Hand: Axial View
BP106	Cross Section of Hand: Axial View (continued)

SECTION 8 LOWER LIMB • Plates 471-535

Surface Anatomy • Plate 471

471 Lower Limb: Surface Anatomy

Cutaneous Anatomy • Plates 472-475

472 Dermatomes of Lower Limb and Segmental Nerve Function
473 Superficial Nerves and Veins of Lower Limb: Anterior View
474 Superficial Nerves and Veins of Lower Limb: Posterior View
475 Lymph Vessels and Nodes of Lower Limb

Hip and Thigh • Plates 476-496

476 Coxal Bone
477 Hip Joint
478 Hip Joint: Anteroposterior Radiograph
479 Femur
480 Bony Attachments of Muscles of Hip and Thigh: Anterior View
481 Bony Attachments of Muscles of Hip and Thigh: Posterior View
482 Muscles of Thigh: Anterior Views
483 Muscles of Thigh: Anterior Views (continued)
484 Muscles of Hip and Thigh: Lateral View
485 Muscles of Hip and Thigh: Posterior Views
486 Psoas and Iliacus Muscles
487 Lumbosacral and Coccygeal Plexuses
488 Lumbar Plexus
489 Sacral and Coccygeal Plexuses
490 Arteries and Nerves of Thigh: Anterior Views
491 Arteries and Nerves of Thigh: Anterior Views (continued)
492 Arteries and Nerves of Thigh: Posterior View
493 Nerves of Hip and Buttock
494 Hip Bursae: Posterior and Anterolateral Views
495 Arteries of Femoral Head and Neck
496 Thigh: Serial Cross Sections

Knee • Plates 497-503

497 Knee: Medial and Lateral Views
498 Knee: Anterior Views
499 Knee: Interior Views
500 Knee: Cruciate and Collateral Ligaments
501 Knee: Anteroposterior Radiograph and Posterior View
502 Knee: Posterior and Sagittal Views
503 Arteries of Lower Limb: Schema

Leg • Plates 504-514

504	Tibia and Fibula
505	Tibia and Fibula (continued)
506	Attachments of Muscles of Leg
507	Muscles of Leg (Superficial Dissection): Posterior View
508	Muscles of Leg (Intermediate Dissection): Posterior View
509	Muscles of Leg (Deep Dissection): Posterior View
510	Muscles of Leg: Lateral View
511	Muscles of Leg (Superficial Dissection): Anterior View
512	Muscles of Leg (Deep Dissection): Anterior View
513	Venous Drainage of Leg
514	Leg: Cross Sections and Fascial Compartments

Ankle and Foot • Plates 515-528

515	Bones of Foot
516	Bones of Foot (continued)
517	Calcaneus
518	Ligaments and Tendons of Ankle
519	Ligaments and Tendons of Foot: Plantar View
520	Tendon Sheaths of Ankle
521	Muscles of Dorsum of Foot: Superficial Dissection
522	Dorsum of Foot: Deep Dissection
523	Plantar Region of Foot: Superficial Dissection
524	Muscles of Plantar Region of Foot: First Layer
525	Muscles of Plantar Region of Foot: Second Layer
526	Muscles of Plantar Region of Foot: Third Layer
527	Interosseous Muscles and Deep Arteries of Foot
528	Interosseous Muscles of Foot

Neurovasculature • Plates 529-533

529	Femoral Nerve and Lateral Femoral Cutaneous Nerve
530	Obturator Nerve
531	Sciatic Nerve and Posterior Femoral Cutaneous Nerve
532	Tibial Nerve
533	Common Fibular Nerve

Regional Imaging • Plates 534-535

534	Hip MRI and 3D CT
535	Ankle: Radiographs

Structures with High Clinical Significance • Tables 8.1-8.2

Muscle Tables • Tables 8.3-8.6

Electronic Bonus Plates • Plates BP107-BP117

- BP107 Veins of Lower Limb
- BP108 Arteries of Thigh and Knee
- BP109 Cross-Sectional Anatomy of Hip: Axial View
- BP110 Arteries of Knee and Foot
- BP111 Leg: Serial Cross Sections
- BP112 Osteology of Knee
- BP113 Knee Radiograph: Lateral View
- BP114 Anatomy of Foot: Nerves and Arteries
- BP115 Cross-Sectional Anatomy of Ankle and Foot
- BP116 Cross-Sectional Anatomy of Ankle and Foot (continued)
- BP117 Anatomy of Toenail