

Opening password-protected PowerPoint presentations

Sunday 23 November 2014 11:31 Stefano Tommesani



PowerPoint presentations can arrive in different file formats:

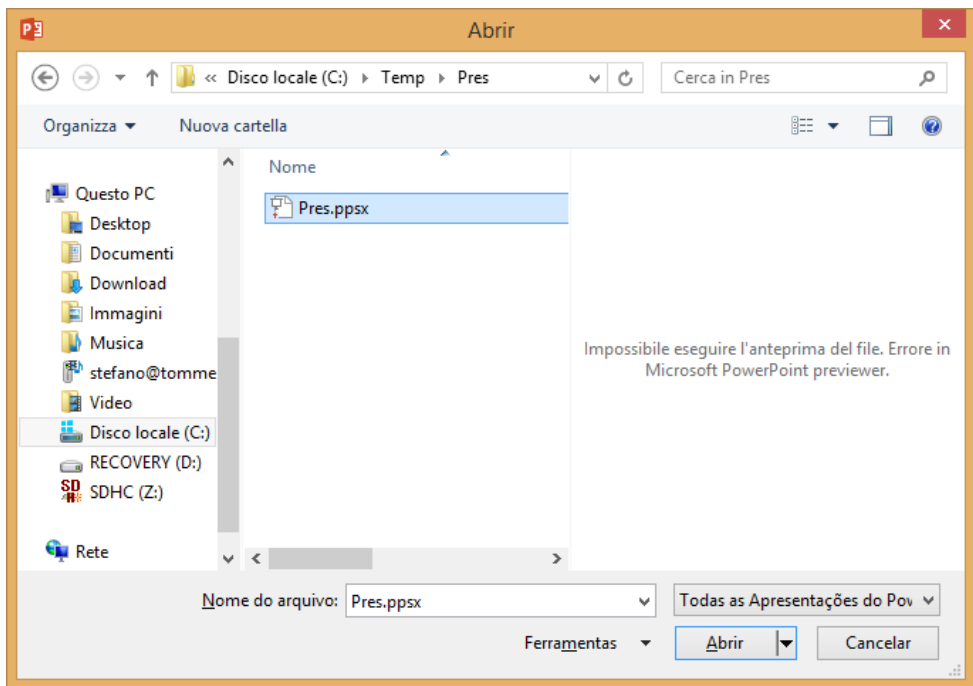
PPT is the default file extension for saving presentations in PowerPoint 2003 and earlier versions.

PPTX is the default file extension for saving presentations in PowerPoint 2007 and later versions.

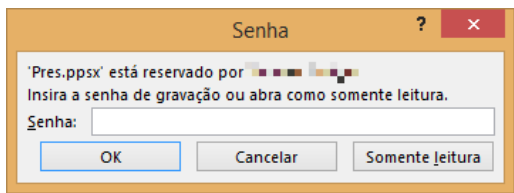
PPS is the the show mode extension in PowerPoint 2003 and earlier -- these files run in "play-presentation" mode when double-clicked.

PPSX does the same thing in PowerPoint 2007 and later -- it runs in "play-presentation" mode when double-clicked.

For editing a PPSX file, instead of double clicking on it, as it would start the "play-presentation" mode, open PowerPoint and then open the file:

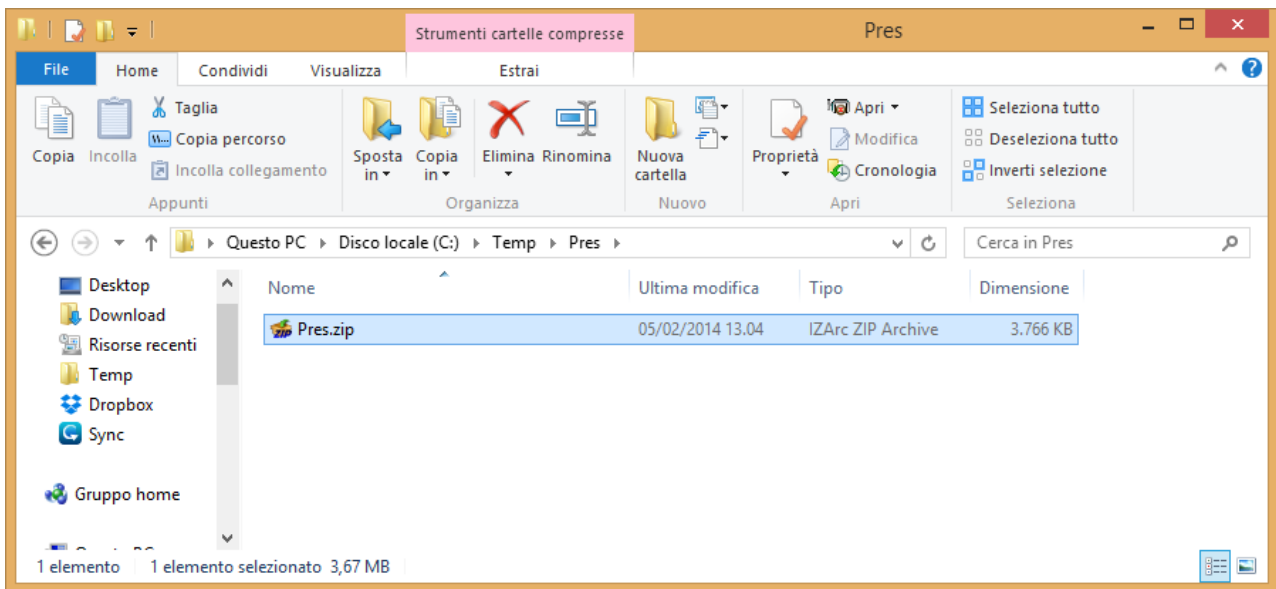


Still, if the PPSX file is password-protected, you have to enter the correct password to unlock it and be able to alter the contents and paste them in other presentations:

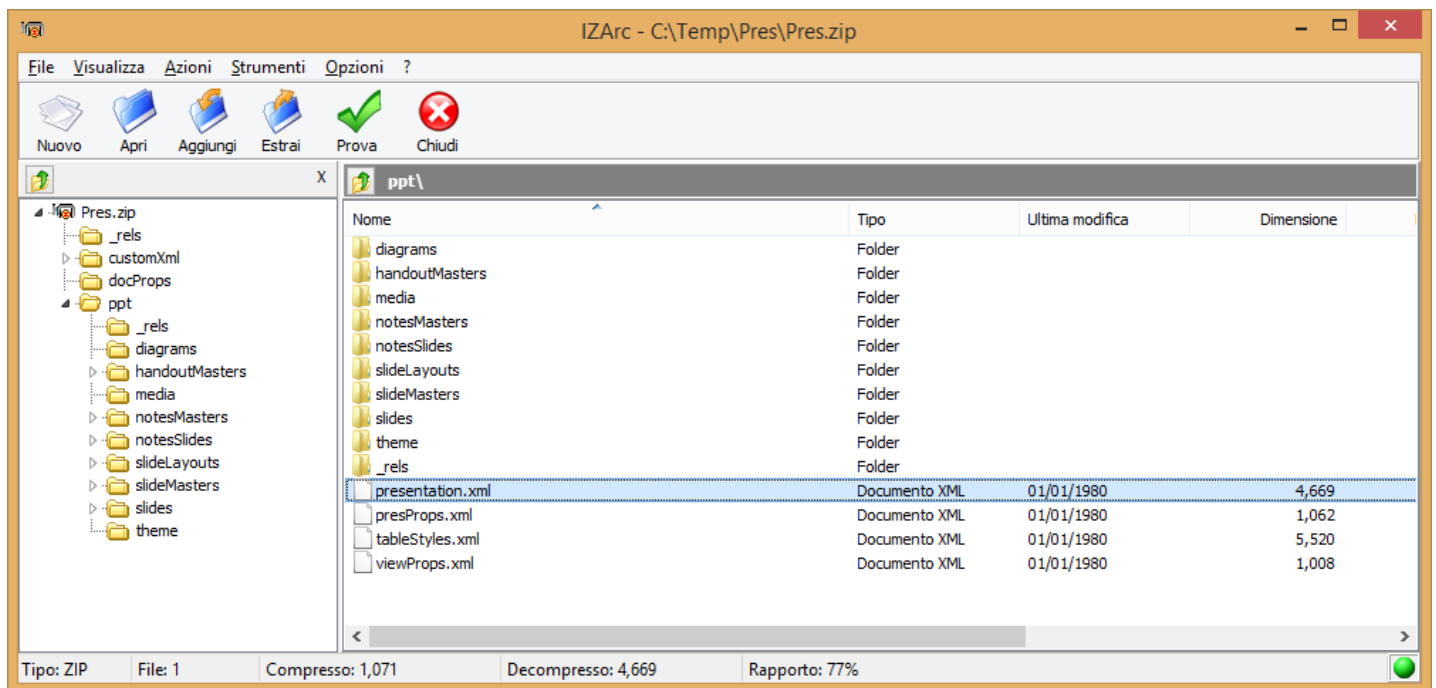


Or not?

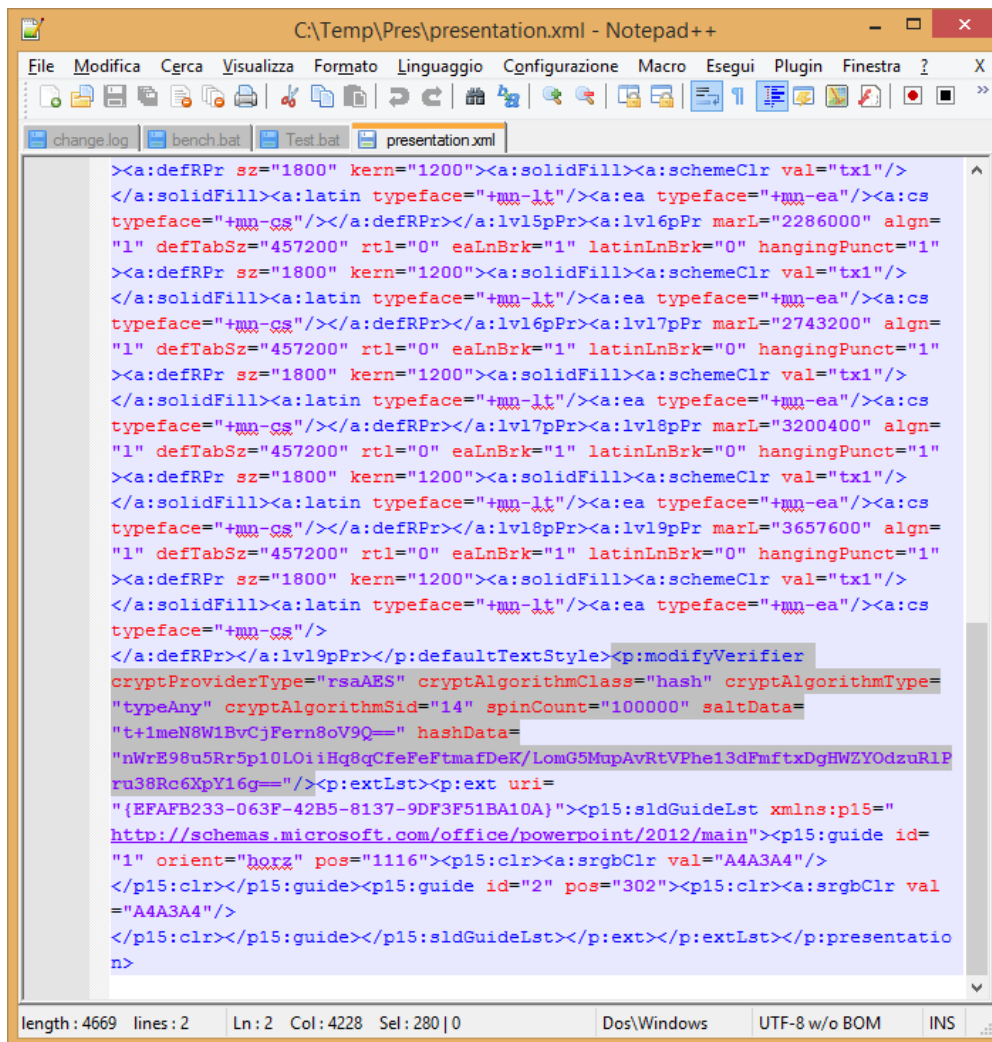
Actually we can open password-protected PowerPoint PPSX presentations without knowing the password. In explorer, rename the presentation, changing the file extension from PPSX to ZIP:



Then open the ZIP file, and search for the presentation.xml file in the ppt folder:



Extract the presentation.xml file from the ZIP file, then open it in a text editor (here is Notepad++, but plain Notepad will do just as well)



The image shows a Notepad++ window with the file 'C:\Temp\PRES\presentation.xml'. The code is XML, and a portion of it is highlighted in grey. The highlighted portion is a `<p:modifyVerifier>` tag with several attributes. The status bar at the bottom indicates the file is 4669 characters long, 2 lines, with the cursor at line 2, column 4228, and 280 characters selected.

```
><a:defRPr sz="1800" kern="1200"><a:solidFill><a:schemeClr val="tx1"/>
</a:solidFill><a:latin typeface="+mn-lt"/><a:ea typeface="+mn-ea"/><a:cs
typeface="+mn-cs"/></a:defRPr></a:lv15pPr><a:lv16pPr marL="2286000" algn=
"1" defTabSz="457200" rtl="0" eaLnBrk="1" latinLnBrk="0" hangingPunct="1"
><a:defRPr sz="1800" kern="1200"><a:solidFill><a:schemeClr val="tx1"/>
</a:solidFill><a:latin typeface="+mn-lt"/><a:ea typeface="+mn-ea"/><a:cs
typeface="+mn-cs"/></a:defRPr></a:lv16pPr><a:lv17pPr marL="2743200" algn=
"1" defTabSz="457200" rtl="0" eaLnBrk="1" latinLnBrk="0" hangingPunct="1"
><a:defRPr sz="1800" kern="1200"><a:solidFill><a:schemeClr val="tx1"/>
</a:solidFill><a:latin typeface="+mn-lt"/><a:ea typeface="+mn-ea"/><a:cs
typeface="+mn-cs"/></a:defRPr></a:lv17pPr><a:lv18pPr marL="3200400" algn=
"1" defTabSz="457200" rtl="0" eaLnBrk="1" latinLnBrk="0" hangingPunct="1"
><a:defRPr sz="1800" kern="1200"><a:solidFill><a:schemeClr val="tx1"/>
</a:solidFill><a:latin typeface="+mn-lt"/><a:ea typeface="+mn-ea"/><a:cs
typeface="+mn-cs"/></a:defRPr></a:lv18pPr><a:lv19pPr marL="3657600" algn=
"1" defTabSz="457200" rtl="0" eaLnBrk="1" latinLnBrk="0" hangingPunct="1"
><a:defRPr sz="1800" kern="1200"><a:solidFill><a:schemeClr val="tx1"/>
</a:solidFill><a:latin typeface="+mn-lt"/><a:ea typeface="+mn-ea"/><a:cs
typeface="+mn-cs"/>
</a:defRPr></a:lv19pPr></p:defaultTextStyle><p:modifyVerifier
cryptProviderType="rsaAES" cryptAlgorithmClass="hash" cryptAlgorithmType=
"typeAny" cryptAlgorithmSid="14" spinCount="100000" saltData=
"t+1meN8W1BvCjFern8oV9Q==" hashData=
"nWrE98u5Rr5p10L0iHq8qCfeFftmafDeK/LomG5MupAvRtVPhe13dFmftxDgHWZYOdzuR1P
ru38Rc6XpY16g=="></p:extLst><p:ext uri=
"{EFAFB233-063F-42B5-8137-9DF3F51BA10A}"><p15:sldGuideLst xmlns:p15="
http://schemas.microsoft.com/office/powerpoint/2012/main"><p15:guide id=
"1" orient="horz" pos="1116"><p15:clr><a:srgbClr val="A4A3A4"/>
</p15:clr></p15:guide><p15:guide id="2" pos="302"><p15:clr><a:srgbClr val
="A4A3A4"/>
</p15:clr></p15:guide></p15:sldGuideLst></p:ext></p:extLst></p:presentatio
n>
```

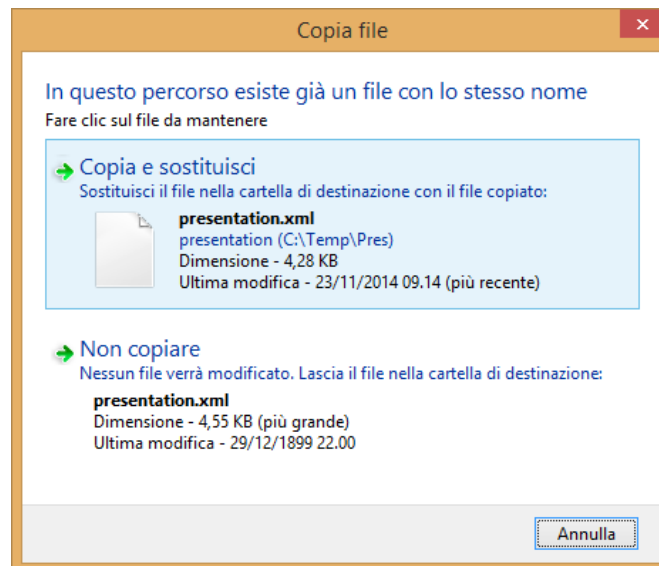
Close to the end of the file, find the tag highlighted, starting with

```
<p:modifyVerifier cryptProviderType="rsaAES"
```

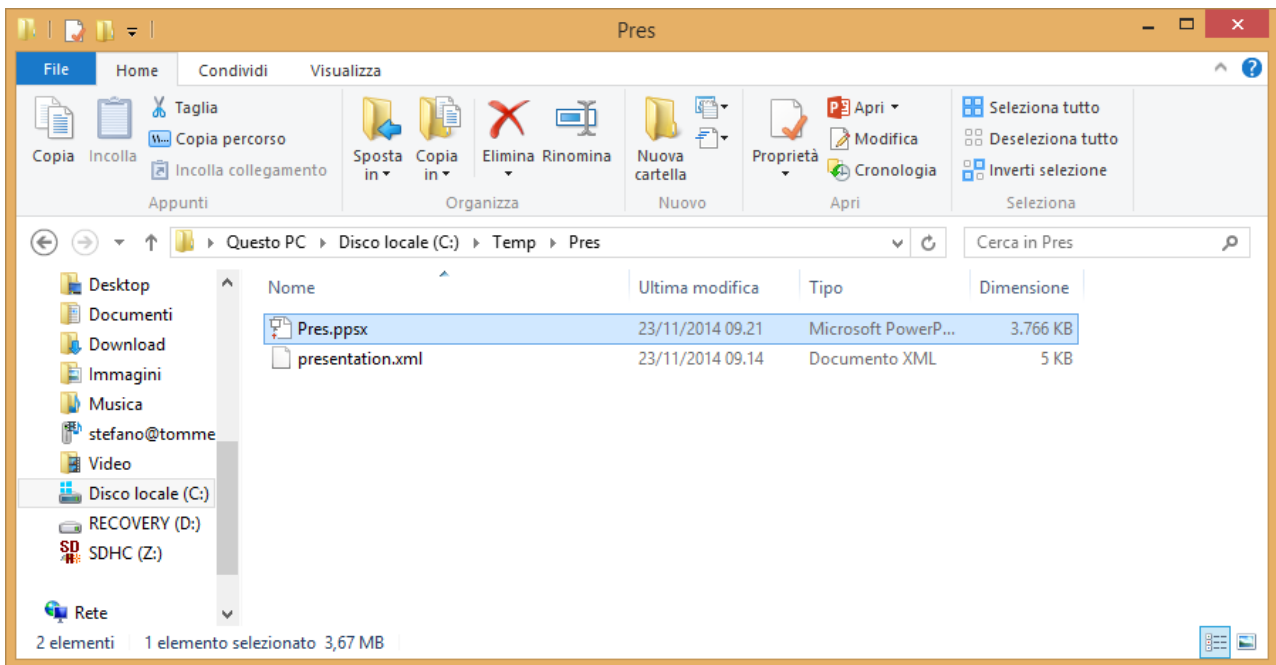
mark it and then delete it, like this:

```
*C:\Temp\Pres\presentation.xml - Notepad++
File Modifica Cerca Visualizza Formato Linguaggio Configurazione Macro Esegui Plugin Finestra ? X
change.log bench.bat Test.bat presentation.xml
"1" defTabSz="457200" rtl="0" eaLnBrk="1" latinLnBrk="0" hangingPunct="1"
><a:defRPr sz="1800" kern="1200"><a:solidFill><a:schemeClr val="tx1"/>
</a:solidFill><a:latin typeface="+mn-lt"/><a:ea typeface="+mn-ea"/><a:cs
typeface="+mn-gs"/></a:defRPr><a:lvl4pPr><a:lvl5pPr marL="1828800" algn=
"1" defTabSz="457200" rtl="0" eaLnBrk="1" latinLnBrk="0" hangingPunct="1"
><a:defRPr sz="1800" kern="1200"><a:solidFill><a:schemeClr val="tx1"/>
</a:solidFill><a:latin typeface="+mn-lt"/><a:ea typeface="+mn-ea"/><a:cs
typeface="+mn-gs"/></a:defRPr><a:lvl5pPr><a:lvl6pPr marL="2286000" algn=
"1" defTabSz="457200" rtl="0" eaLnBrk="1" latinLnBrk="0" hangingPunct="1"
><a:defRPr sz="1800" kern="1200"><a:solidFill><a:schemeClr val="tx1"/>
</a:solidFill><a:latin typeface="+mn-lt"/><a:ea typeface="+mn-ea"/><a:cs
typeface="+mn-gs"/></a:defRPr><a:lvl6pPr><a:lvl7pPr marL="2743200" algn=
"1" defTabSz="457200" rtl="0" eaLnBrk="1" latinLnBrk="0" hangingPunct="1"
><a:defRPr sz="1800" kern="1200"><a:solidFill><a:schemeClr val="tx1"/>
</a:solidFill><a:latin typeface="+mn-lt"/><a:ea typeface="+mn-ea"/><a:cs
typeface="+mn-gs"/></a:defRPr><a:lvl7pPr><a:lvl8pPr marL="3200400" algn=
"1" defTabSz="457200" rtl="0" eaLnBrk="1" latinLnBrk="0" hangingPunct="1"
><a:defRPr sz="1800" kern="1200"><a:solidFill><a:schemeClr val="tx1"/>
</a:solidFill><a:latin typeface="+mn-lt"/><a:ea typeface="+mn-ea"/><a:cs
typeface="+mn-gs"/></a:defRPr><a:lvl8pPr><a:lvl9pPr marL="3657600" algn=
"1" defTabSz="457200" rtl="0" eaLnBrk="1" latinLnBrk="0" hangingPunct="1"
><a:defRPr sz="1800" kern="1200"><a:solidFill><a:schemeClr val="tx1"/>
</a:solidFill><a:latin typeface="+mn-lt"/><a:ea typeface="+mn-ea"/><a:cs
typeface="+mn-gs"/>
</a:defRPr><a:lvl9pPr></p:defaultTextStyle><p:extLst><p:ext uri=
"({EFAFB233-063F-42B5-8137-9DF3F51BA10A})"><p15:sldGuideLst xmlns:p15=
"http://schemas.microsoft.com/office/powerpoint/2012/main"><p15:guide id=
"1" orient="horz" pos="1116"><p15:clr><a:srgbClr val="A4A3A4"/>
</p15:clr></p15:guide><p15:guide id="2" pos="302"><p15:clr><a:srgbClr val=
"A4A3A4"/>
</p15:clr></p15:guide></p15:sldGuideLst></p:ext></p:extLst></p:presentatio
n>
length: 4389 lines: 2 Ln: 2 Col: 3948 Sel: 0 | 0 Dos\Windows UTF-8 w/o BOM INS
```

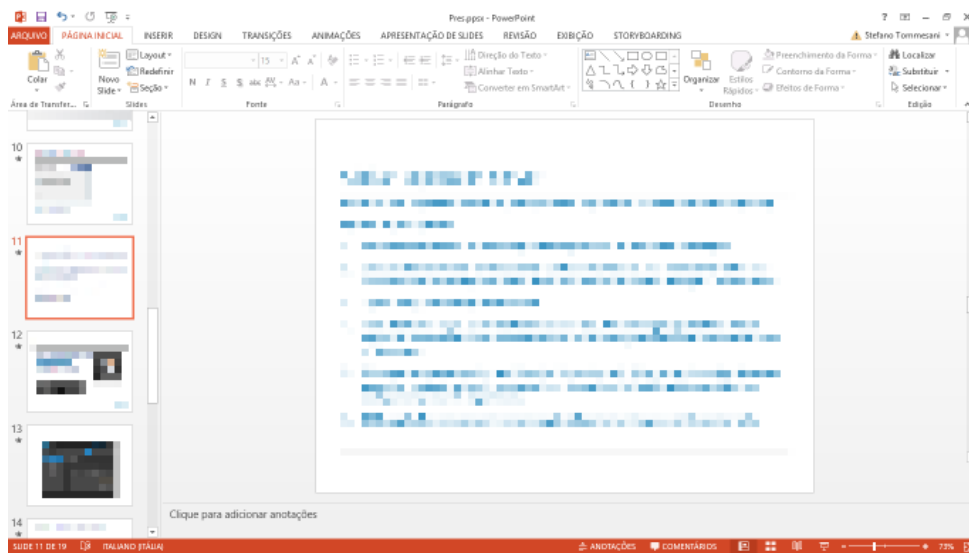
Save the file, then put it back into the ZIP file in the same position, replacing the unedited one:



Finally, rename the ZIP file back to the PPSX extension:



Done! Now open PowerPoint, and open the Pres.ppsx file:



Mission accomplished! All the contents of the presentation are now at your disposal.