
VPN(Virtual Private Network)

VPN

VPN

XP

VPN

VPN

virtual private network

VPN

()

VPN

Mail

FTP

RAS

VPN

VPN

Packet

VPN

snifter

(LAN)

VPN (

VPN

VPN

VPN

Dialup

VPN

DialUp

Leased

(Leased)

LAN

VPN

VPN

VPN

VPN

(Tunneling) (

VPN

VPN

(Tunneling)

(Encapsulation)

()

Header

Tunneling

(Interface)

IPX, IP, NetBeui

IPSec, L2F, PPTP, L2TP, GRE

Encapsulation

VPN

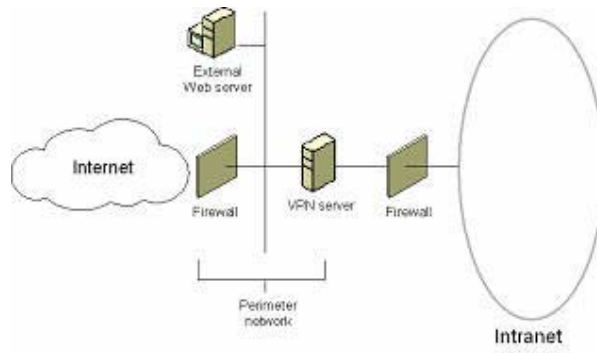
VPN

VPN

Tunneling

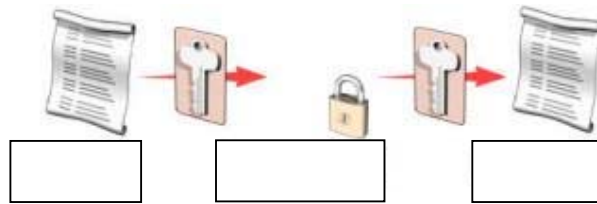
VPN

(Firewall)



() Secret

" "

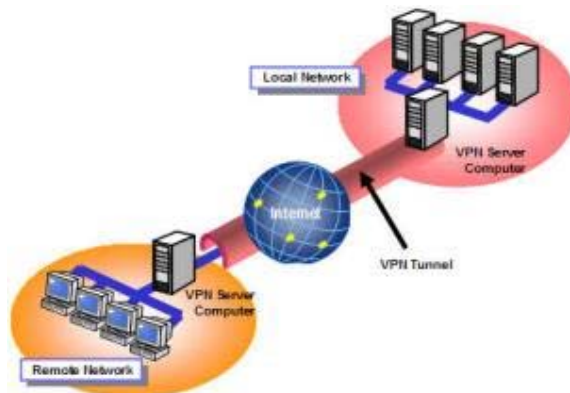


()

()

VPN (

()



()

VPN



¹ Private Internet exchange

VPN (

(Packet Oriented)

PPP

VPN

OSI

(Application Oriented)

OSI

OSI

(NAT)

VPN

VPN (-

SOCKS

SSH

SSH

SSH

SSH

TCP/IP

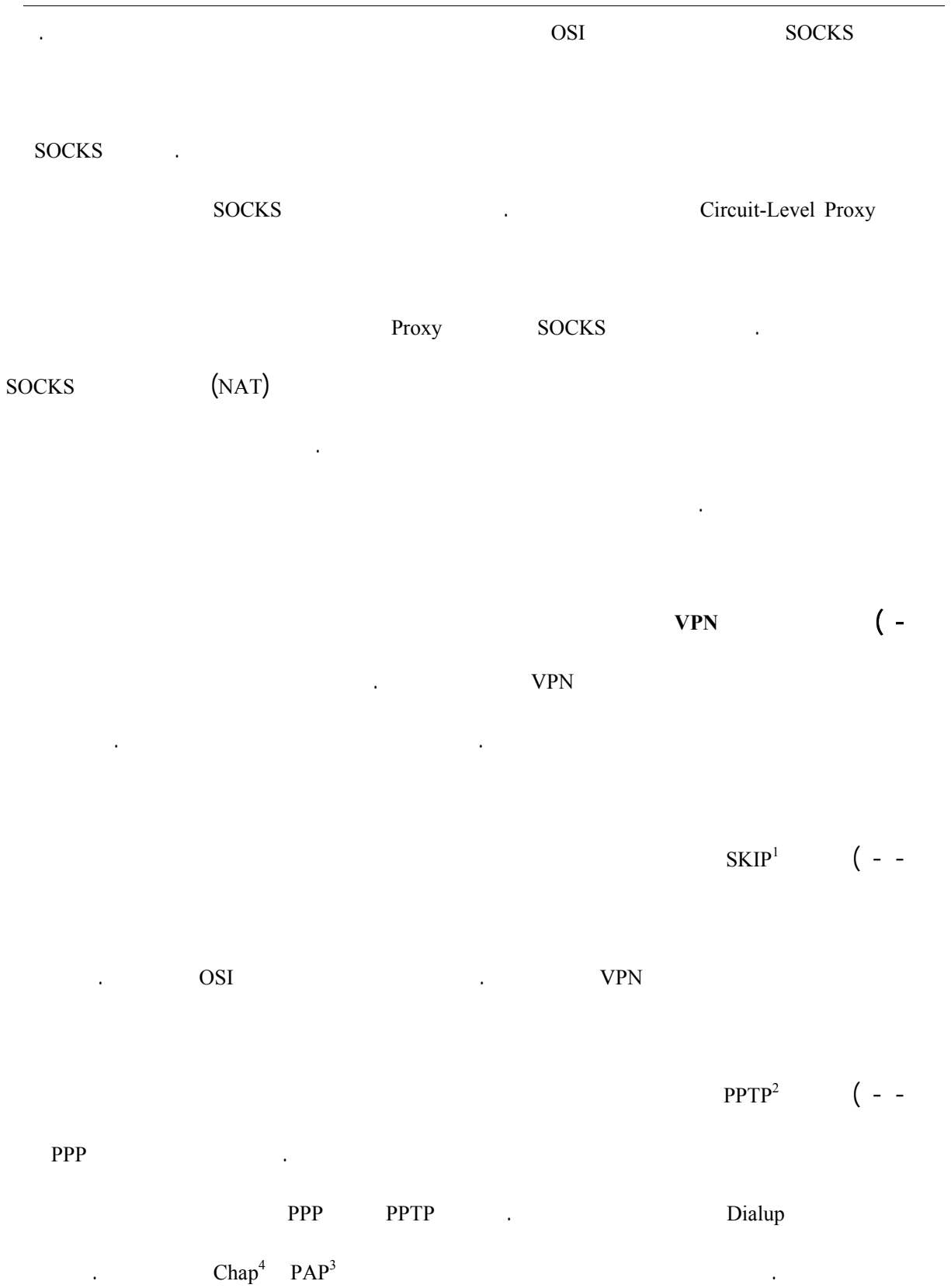
TCP

TCP

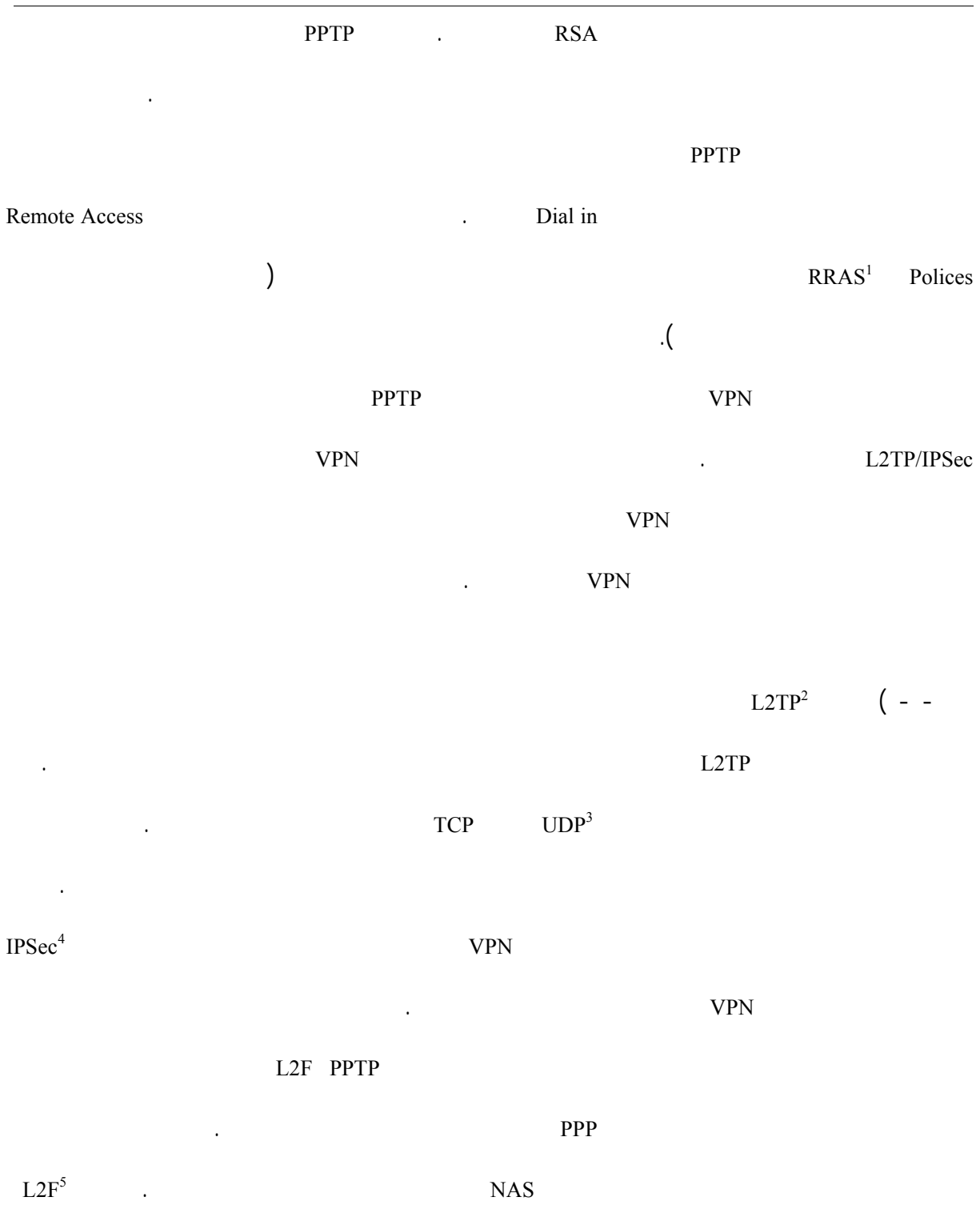
IP

SSH

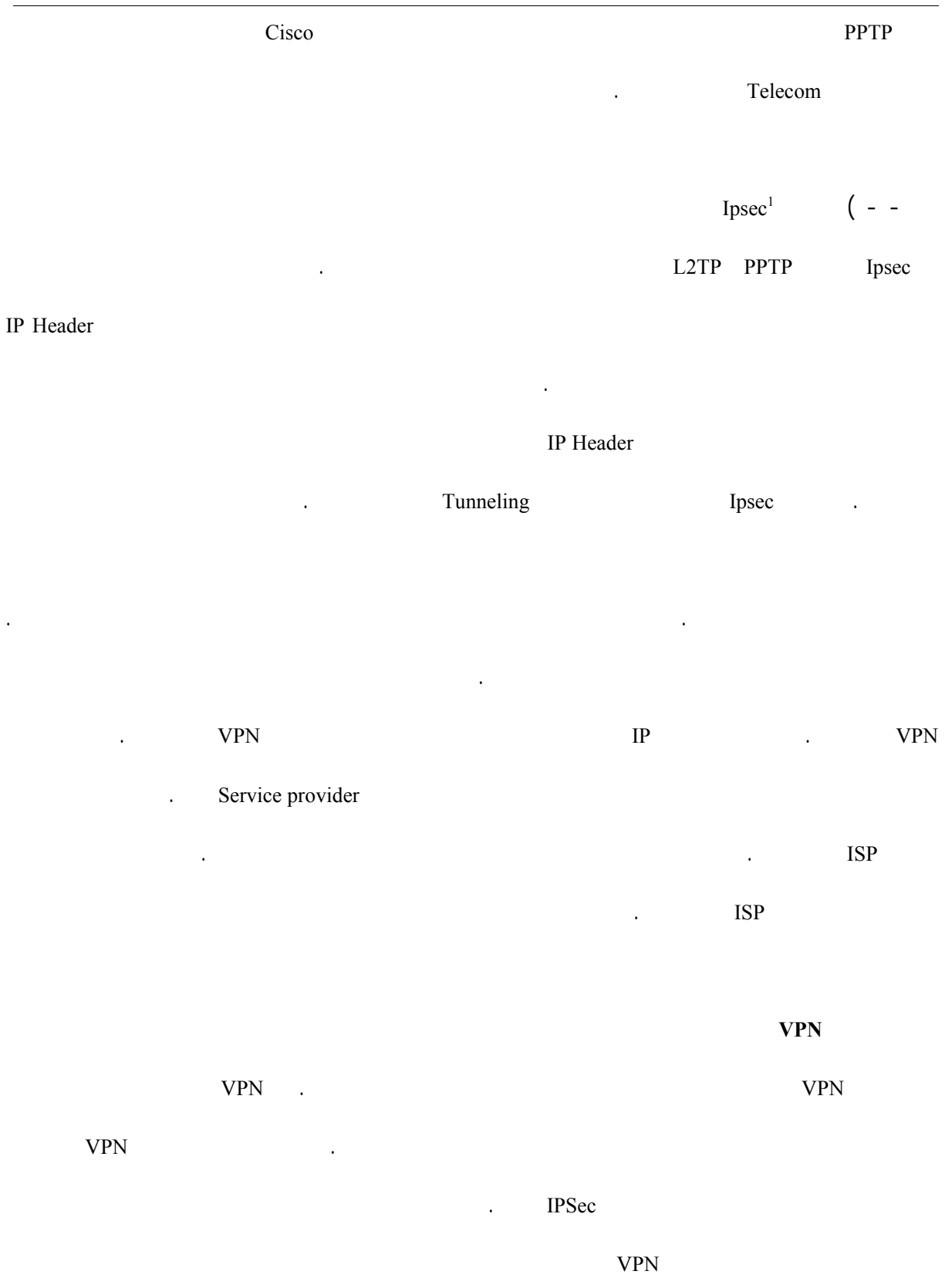
VPN



¹ Simple Key Management for Internet Protocol; SKIP
² Point to Point Tunneling Protocol, PPTP
³ Password Authentication Protocol, PAP
⁴ Challenge Handshake Authentication Protocol, CHAP



¹ Remote Routing Access Service, RRAS
² Layer2 Forwarding protocol, L2TP
³ User Datagram Protocol, UDP
⁴ IP Security, IPsec
⁵ Layer Two Filtering



¹ IP Security protocol, IPsec

(MPLS VPN)

SSL

MPLS VPN

VPN

VPN

VPN

VPN

OSI

VPN

VPN

VPN

VPN

:

VPN -

Frame Relay ATM

OSI

Frame Relay

ATM

tunneling

VPN

:

VPN -

VPN

IPSec Tunneling

L2TP

L2TP

GRE

VPN

SSL

VPN .

VPN :

VPN -

SSL

SSL . VPN

SSH . SSH VPN

VPN .

login

VPN

VPN .

VPN

VPN .

VPN

DMZ

" .

VPN .

IT

XP

VPN

VPN

XP

VPN

-

XP

Network Connections

(

Create a new connection

(

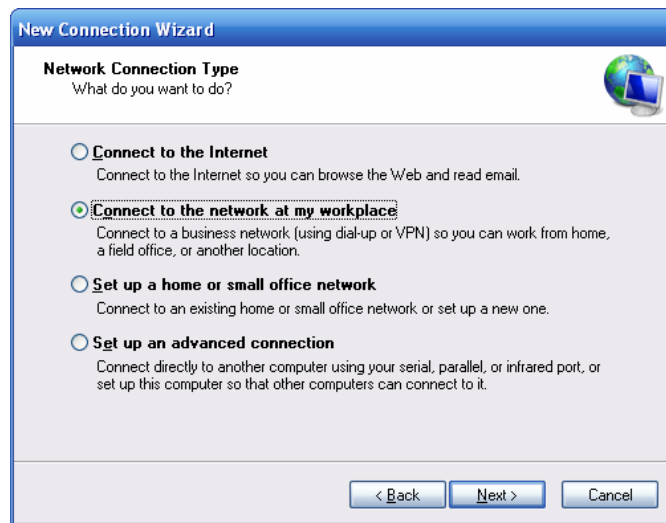


Connect to the network at my workplace

next

(

next



next

Virtual Private Network connection

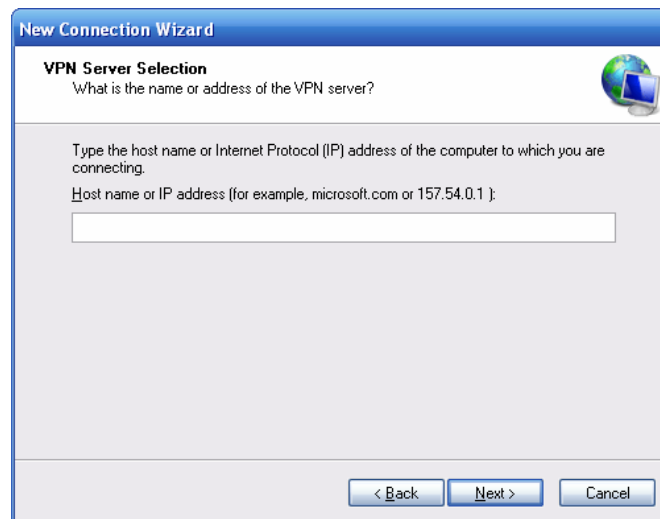
(



(

IP

(



Finish

Next

IP

(

Network Connections



ISP

Network Connections

properties

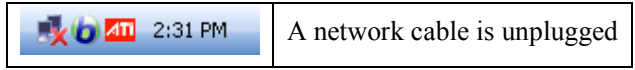


IP

general

:

(System tray)



Network Connections

disable

local Area Connection

LAN or high speed dialing

(Enable)

network adapter

device manager

IP

VPN

VPN

Create a new connection

Network Connections

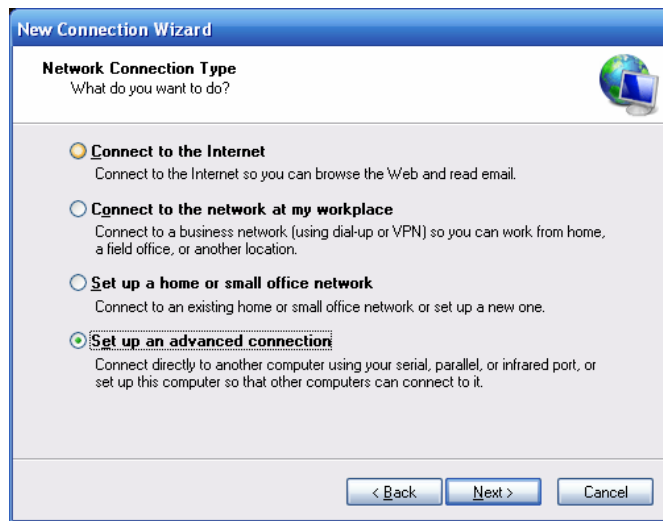
(

next

next

Setup an advanced connection

(



next

Accept incoming connection

Network Connections

incoming connection



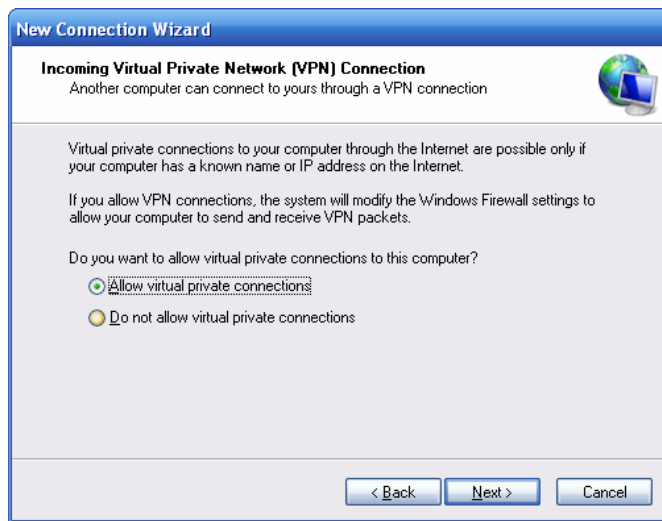
(

)

next

VPN

Allow virtual private connections



(

Remove Add

next

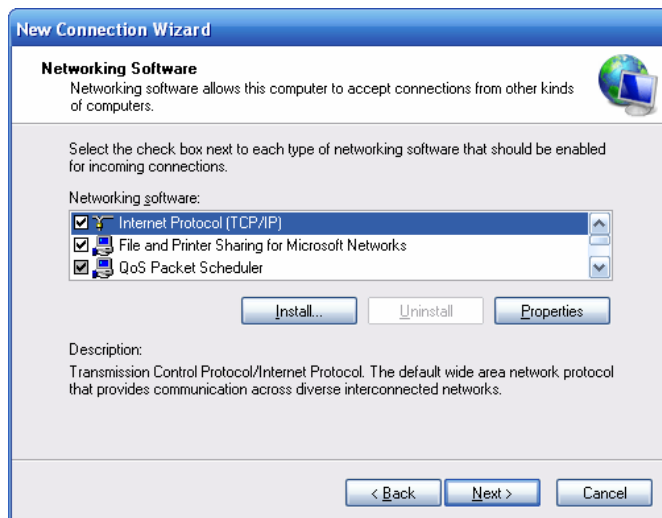
Properties

VPN

(

Properties

TCP/IP



IP

(

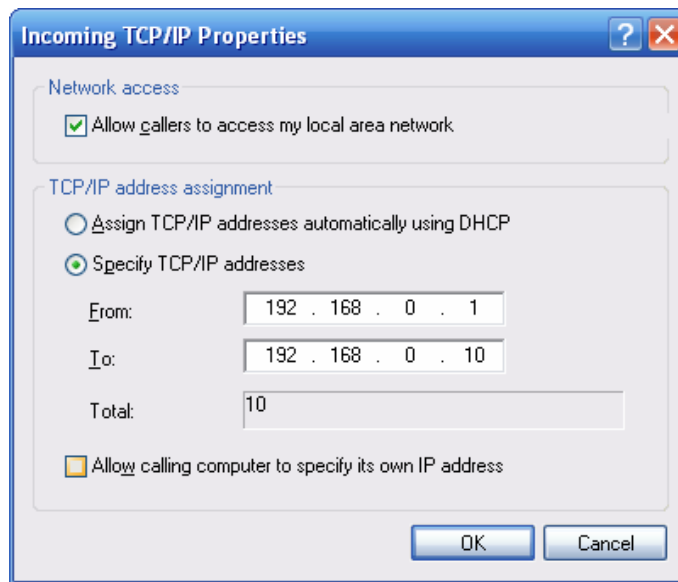
DHCP

IP

IP

dynamic host configuration protocol

DHCP



Finish

next

incoming connection

incoming

:

127.0.0.1 IP

connection

(www.fekrinejat.com)

:

-

-

Vahanab@yahoo.com

- Virtual Private Networks for Windows Server 2003,
<http://www.microsoft.com/windowsserver2003/technologies/networking/vpn/default.mspx>
- WWW.HELMIG.COM
- WWW.HUPAA.COM
- Virtual Private Networking Frequently Asked Questions
- Antivirus Firewall Anti-Virus Firewall Hardware Software VPN LAN WAN Wireless Network Security Policy UKfiles