

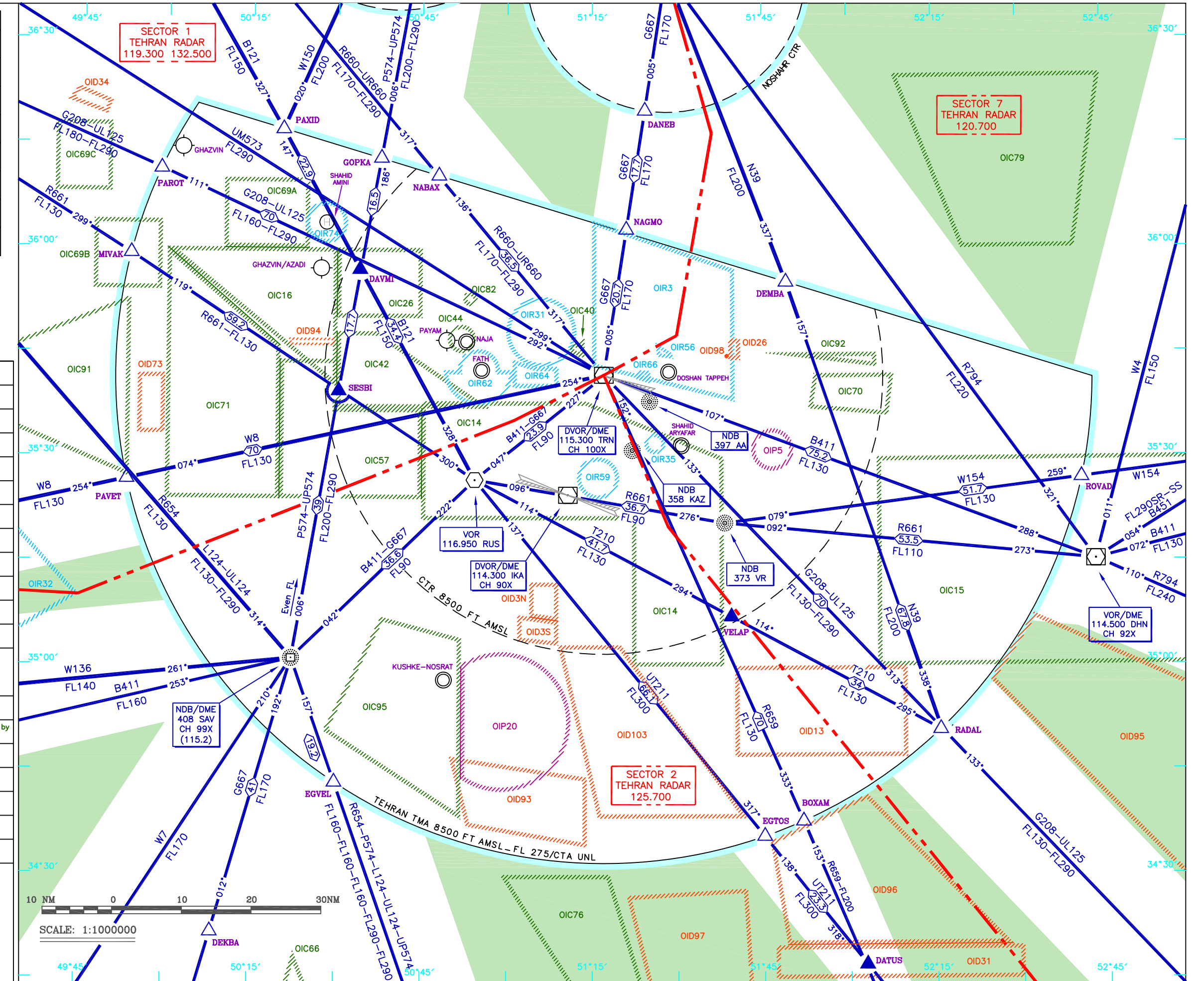
AREA CHART - ICAO

TEHRAN TMA

LEGEND	
CONTROL AREA (TMA)	—————
RADIO COM SECTOR BDY	— · — · — · — · —
CONTROL AREA (CTA)	—————
CONTROL ZONE (CTR)	— · — · — · — · —
REPORTING POINT (COMPULSORY)	▲
REPORTING POINT (ON REQUEST)	△
CIVIL AERODROME	○
MILITARY AERODROME	⊙

NAVIGATION WARNINGS
PROHIBITED(P), RESTRICTED(R), DANGER(D)
AND CAUTION(C) AREAS

OIP5	7500FT AMSL GND	H24	OIC14	5000FT AMSL GND	HJ
OIP20	UNL GND	H24	OIC15	8000FT AMSL GND	HJ
OIR3	UNL GND	H24	OIC16	6000FT AMSL GND	HJ
OIR31	UNL GND	H24	OIC26	6000FT AMSL GND	H24
OIR32	UNL GND	H24	OIC40	8000FT AMSL GND	HJ
OIR35	UNL GND	H24	OIC42	6000FT AMSL GND	H24
OIR56	3000FT AGL GND	H24	OIC44	5000FT AMSL GND	H24
OIR59	FL 200 GND	H24	OIC57	6000FT AMSL GND	HJ
OIR62	5000FT AMSL GND	H24	OIC66	FL 300 GND	HJ
OIR64	FL 240 GND	H24	OIC69A	10000FT AMSL GND	H24
OIR66	18000FT AMSL GND	H24	OIC69B	10000FT AMSL GND	H24
OIR74	6000FT AMSL GND	HJ	OIC69C	10000FT AMSL GND	H24
OID3N	FL 290 GND	Notified by OIII ATC	OIC70	9000FT AMSL GND	HJ
OID3S	FL 290 GND	Notified by OIII ATC	Higher level is notified by ATC		
OID13	6000FT AMSL GND	H24	OIC71	7500FT AMSL GND	HJ
OID26	FL 120 GND	HJ	OIC76	FL 300 GND	Notified by ATC
OID31	FL 190 GND	H24	OIC79	FL 200 GND	HJ
OID34	FL 160 GND	H24	OIC82	1000FT AMSL GND	HJ
OID73	11500FT AMSL GND	By NOTAM	OIC91	8500FT AMSL GND	HJ
OID93	8000FT AMSL GND	H24	OIC92	8000FT AMSL GND	HJ
OID94	6000FT AMSL GND	HJ	OIC95	8000FT AMSL GND	HJ
OID95	FL 500 GND	Notified by OIII ATC			
OID96	FL 190 GND	Notified by OIII ATC			
OID97	FL 180 GND	Notified by esfahan ATC			
OID98	300FT AGL GND	H24			
OID103	FL 240 GND	Notified by OIII ATC			



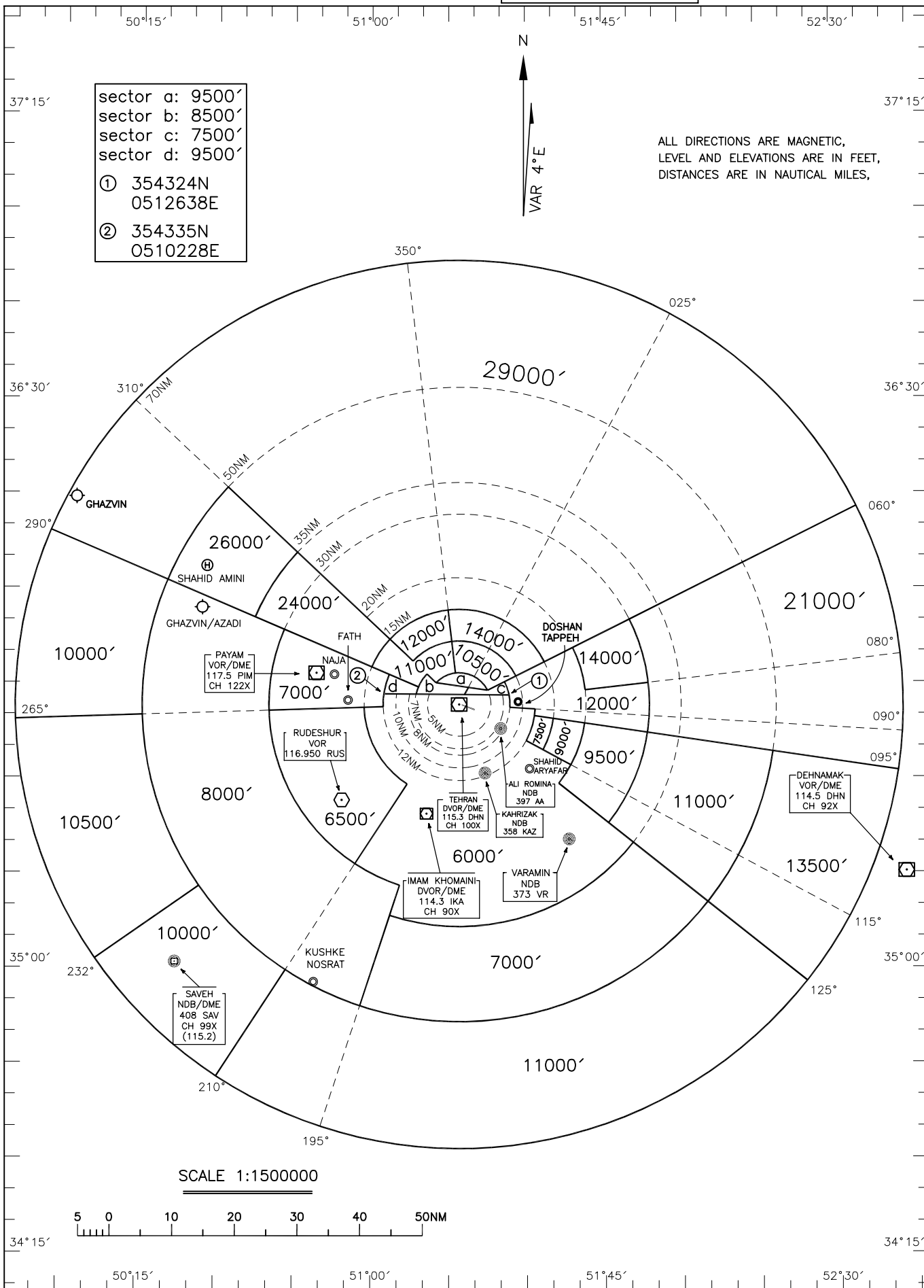
ATC Surveillance Minimum
Altitude Chart – ICAO

TRANSITION ALTITUDE 9000 FT
TRANSITION LEVEL FL 110

APP	119.700, 125.100
RADAR	119.700, 125.100
ATIS	128.000

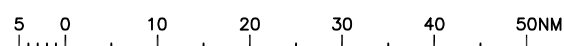
AERODROME ELEVATION 3962 FT

TEHRAN/MEHRABAD



ALL DIRECTIONS ARE MAGNETIC,
LEVEL AND ELEVATIONS ARE IN FEET,
DISTANCES ARE IN NAUTICAL MILES,

SCALE 1:1500000



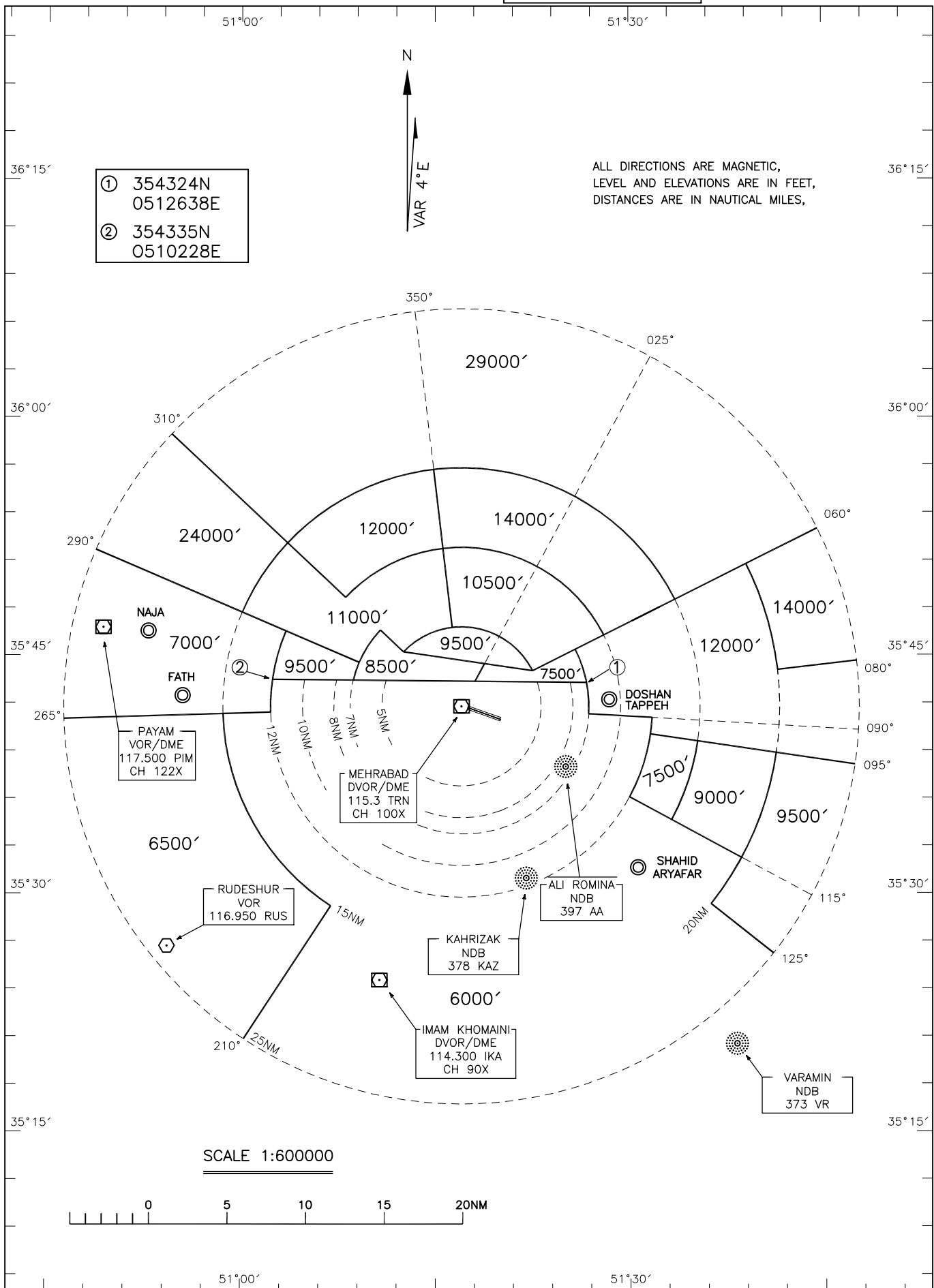
ATC Surveillance Minimum
Altitude Chart - ICAO

TRANSITION ALTITUDE
9000 FT
TRANSITION LEVEL
FL 110

APP 119.700, 125.100
RADAR 119.700, 125.100
ATIS 128.000

TEHRAN/MEHRABAD

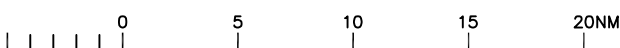
AERODROME ELEVATION
3962 FT



- ① 354324N
0512638E
- ② 354335N
0510228E

ALL DIRECTIONS ARE MAGNETIC,
LEVEL AND ELEVATIONS ARE IN FEET,
DISTANCES ARE IN NAUTICAL MILES,

SCALE 1:600000

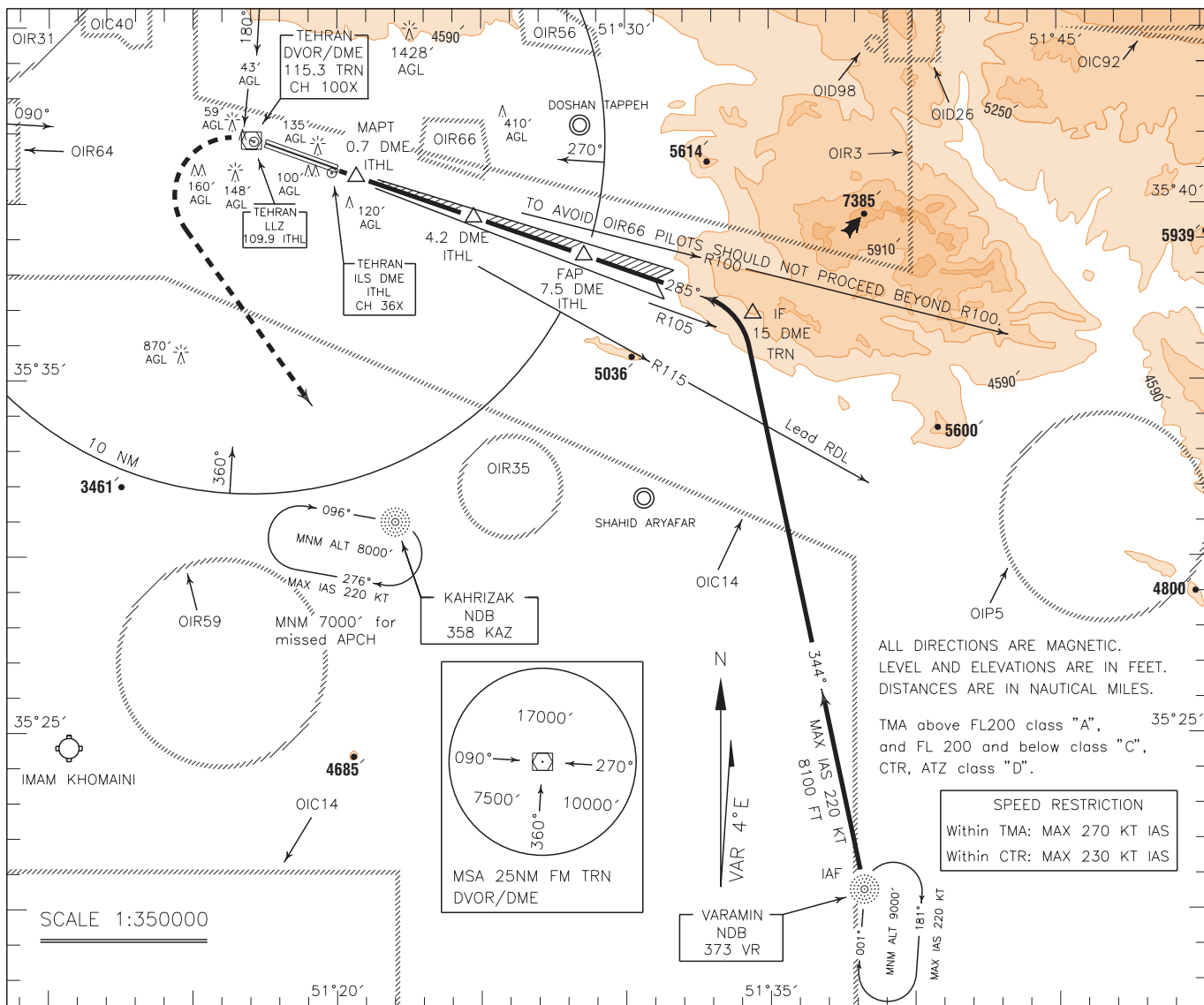


INSTRUMENT
APPROACH
CHART-ICAO

AERODROME ELEV. 3962 FT
HEIGHTS RELATED TO
THR RWY 29L ELEV. 3794 FT

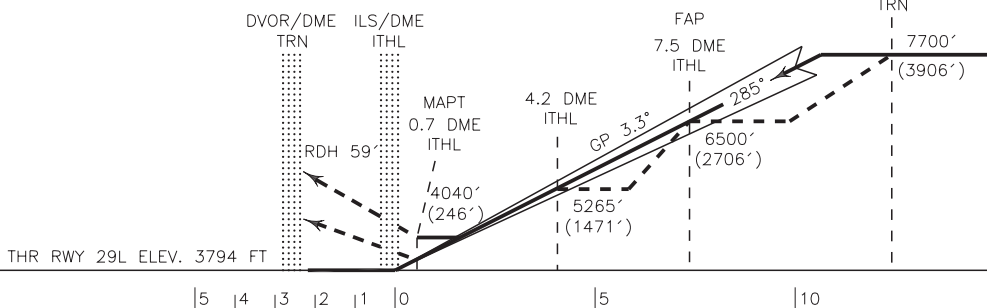
APP	119.700, 125.100
RADAR	119.700, 125.100
TWR	118.100, 124.450
GND	121.700, 121.900
ATIS	128.000

TEHRAN/MEHRABAD
ILS 3 RWY 29L
CAT A/B/C/D



MISSED APPROACH: At 0.7 DME ITHL climb straight ahead to DVOR/DME, then turn left to KAZ NDB and rejoin HLDG at 7000 FT.

TA 9000'
TRL FL110



THR RWY 29L ELEV. 3794 FT

| 5 | 4 | 3 | 2 | 1 | 0 | 5 | 10 | 15 NM FM THR RWY 29L

NOTE:

- 1-Circling not authorized to the north of AD.
- 2-Contour intervals are to be selected at 660 FT (200 M).

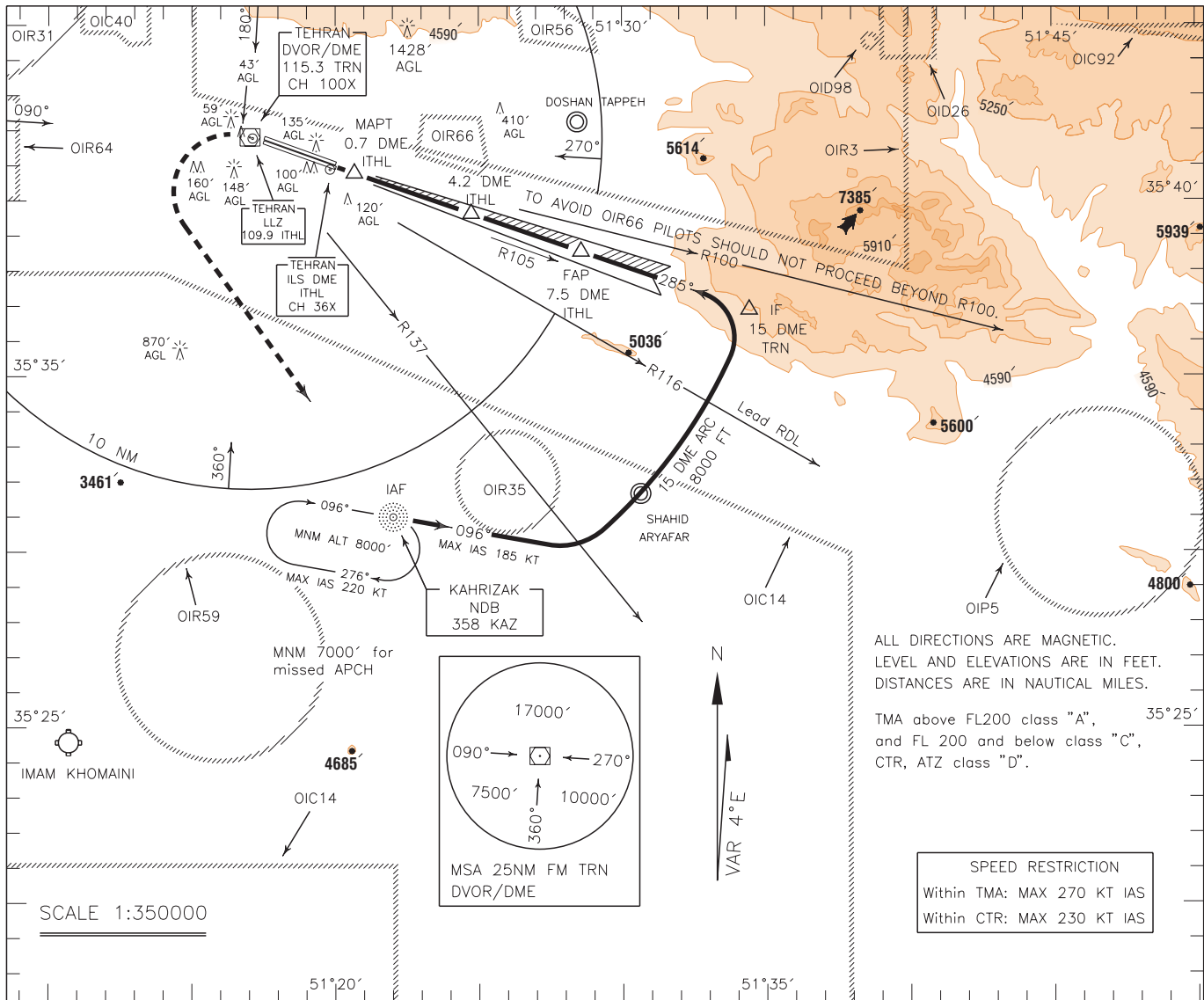
OCA(H)	A	B	C	D
Straight		4040' (246')		
GP INOP		4450' (656')		
Circling		4560' (598')		4660' (698')

INSTRUMENT
APPROACH
CHART-ICAO

AERODROME ELEV. 3962 FT
HEIGHTS RELATED TO
THR RWY 29L ELEV. 3794 FT

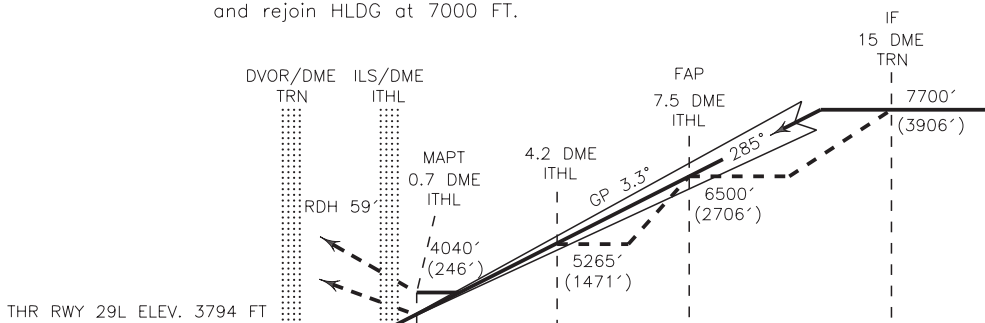
APP	119.700, 125.100
RADAR	119.700, 125.100
TWR	118.100, 124.450
GND	121.700, 121.900
ATIS	128.000

TEHRAN/MEHRABAD
ILS 4 RWY 29L
CAT A/B/C/D



MISSED APPROACH: At 0.7 DME ITHL climb straight ahead to DVOR/DME, then turn left to KAZ NDB and rejoin HLDG at 7000 FT.

TRL FL110
TA 9000'



THR RWY 29L ELEV. 3794 FT

5 4 3 2 1 0 5 10 15 NM FM THR RWY 29L

NOTE:

- 1-Circling not authorized to the north of AD.
- 2-Contour intervals are to be selected at 660 FT (200 M).

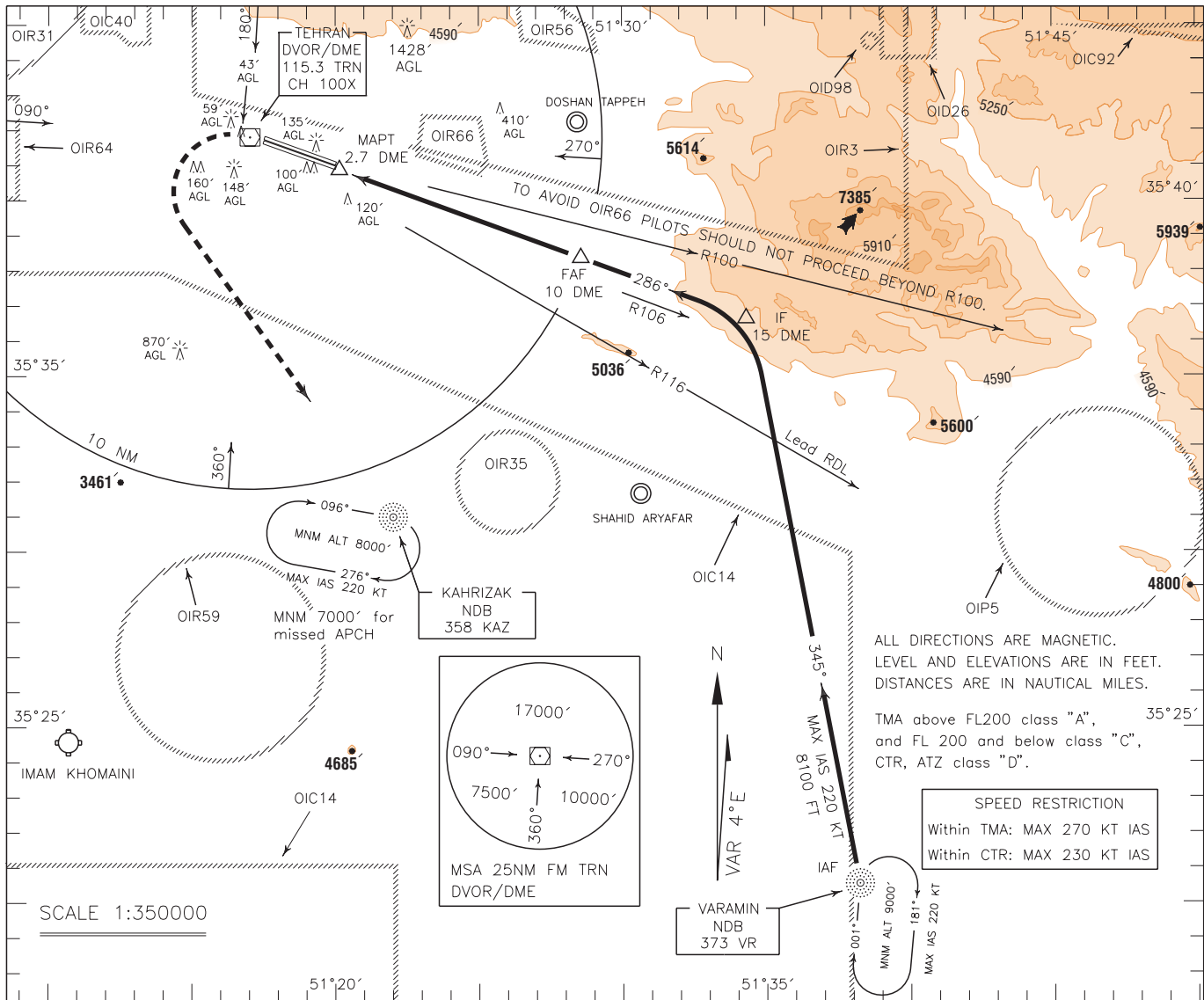
OCA(H)	A	B	C	D
Straight		4040' (246')		
GP INOP		4450' (656')		
Circling		4560' (598')		4660' (698')

INSTRUMENT
APPROACH
CHART-ICAO

AERODROME ELEV. 3962 FT
HEIGHTS RELATED TO
AERODROME ELEVATION

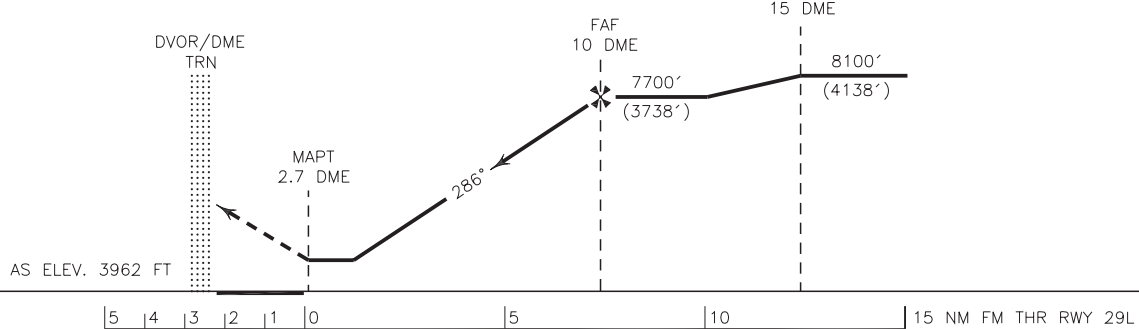
APP	119.700, 125.100
RADAR	119.700, 125.100
TWR	118.100, 124.450
GND	121.700, 121.900
ATIS	128.000

TEHRAN/MEHRABAD
CIRCLING VOR/DME 1
CAT A/B/C/D



MISSED APPROACH: At 2.7 DME climb straight ahead to DVOR/DME, then turn left to KAZ NDB and rejoin HLDG at 7000 FT.

TRL FL110
TA 9000'



NOTE:

- 1-Circling not authorized to the north of AD.
- 2-Contour intervals are to be selected at 660 FT (200 M).

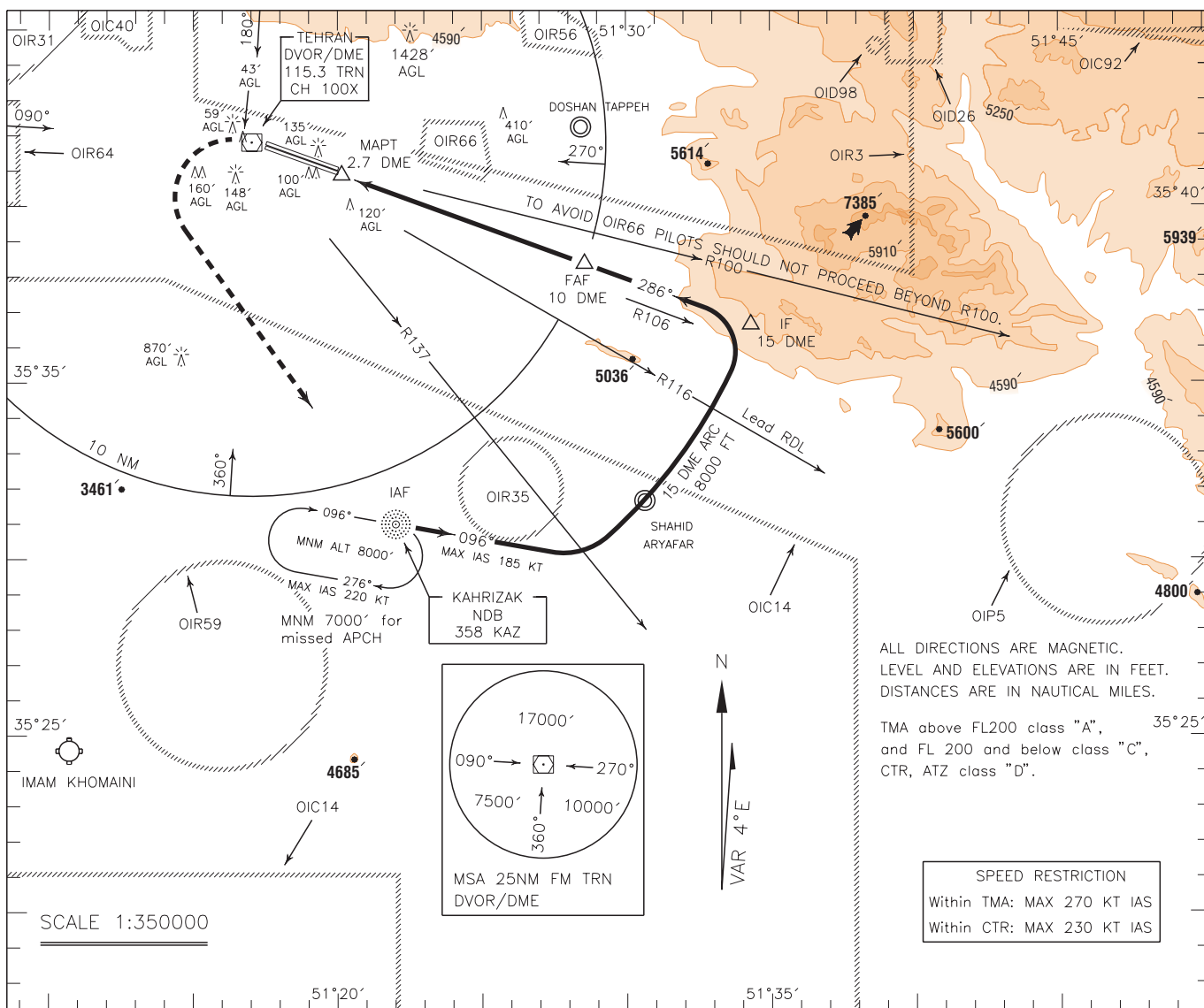
OCA(H)	A	B	C	D
Straight				
Circling		4560' (598')		4660' (698')

INSTRUMENT
APPROACH
CHART-ICAO

AERODROME ELEV. 3962 FT
HEIGHTS RELATED TO
AERODROMS ELEVATION

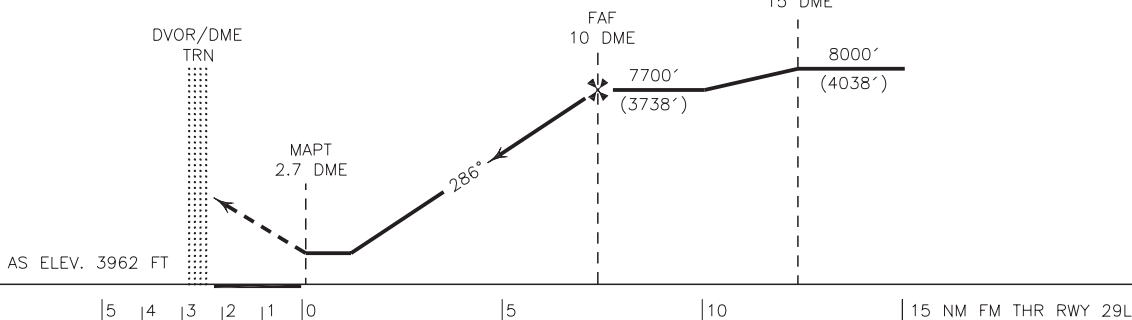
APP	119.700, 125.100
RADAR	119.700, 125.100
TWR	118.100, 124.450
GND	121.700, 121.900
ATIS	128.000

TEHRAN/MEHRABAD
CIRCLING VOR/DME 2
CAT A/B/C/D



MISSED APPROACH: At 2.7 DME climb straight ahead to DVOR/DME, then turn left to KAZ NDB and rejoin HLDG at 7000 FT.

TRL FL110
TA 9000'



NOTE:
1-Circling not authorized to the north of AD.
2-Contour intervals are to be selected at 660 FT (200 M).

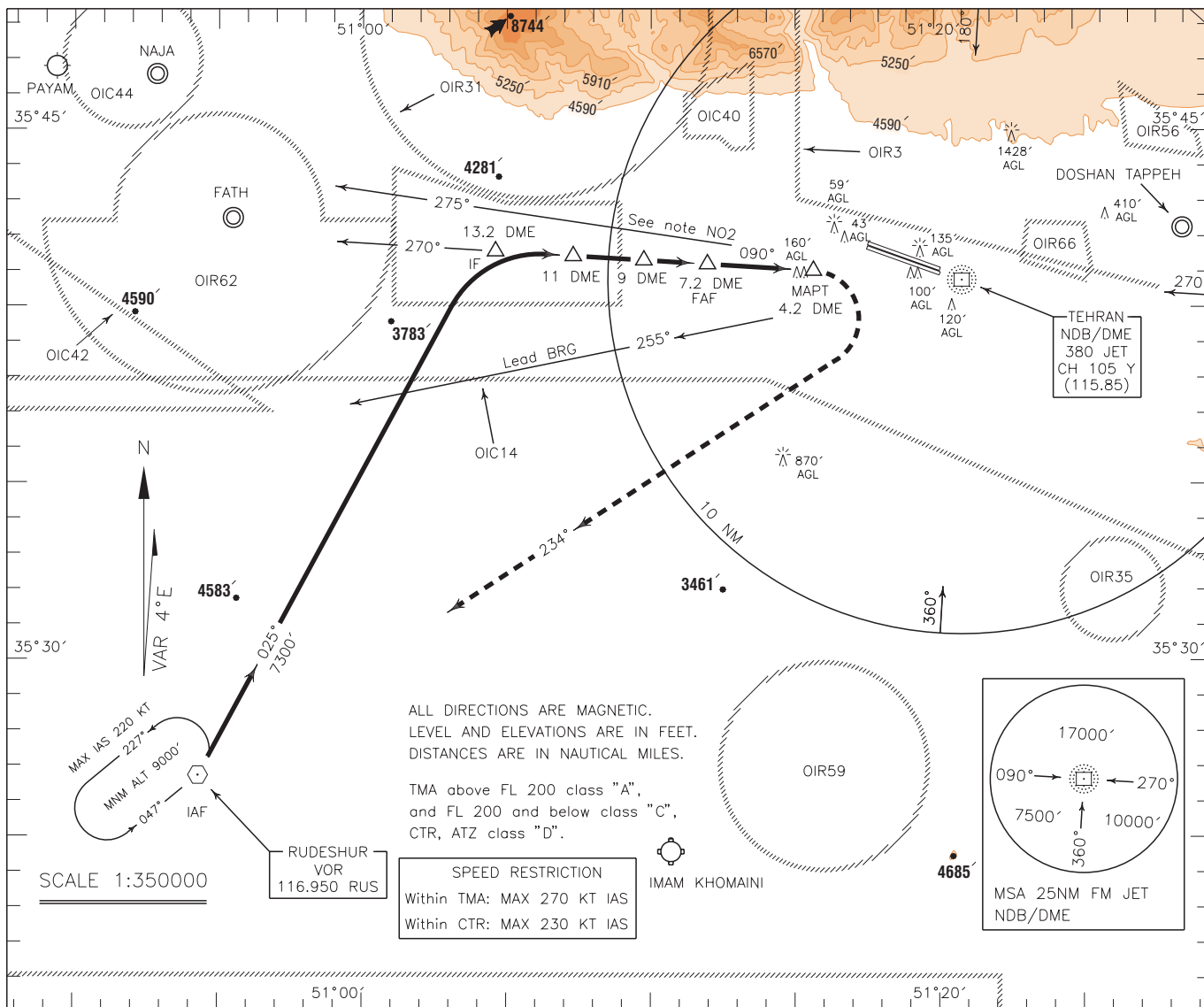
OCA(H)	A	B	C	D
Straight				
Circling		4560' (598')		4660' (698')

INSTRUMENT
APPROACH
CHART-ICAO

AERODROME ELEV. 3962 FT
HEIGHTS RELATED TO
AERODROME ELEVATION

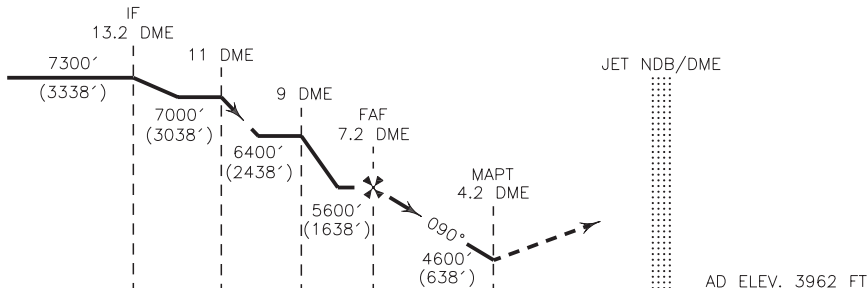
APP	119.700, 125.100, 124.450
RADAR	119.700, 125.100, 124.450
TWR	118.100
GND	121.700, 121.900
ATIS	128.000

TEHRAN/MEHRABAD
CIRCLING VOR/NDB/DME
CAT A/B/C/D



MISSED APPROACH: At 4.2 DME FM JET NDB/DME turn right to establish BRG 234° FM JET NDB/DME to RUS VOR and climb to 7000 FT, further climb by ATC.

TRL FL110
TA 9000'



15 10 5 0 1 2 3 4 5 NM FM THR RWY 11L/R

NOTE:

- 1- Circling not authorized to the north of AD.
- 2- Pilots are requested not proceed beyond BRG 275 to avoid high terrain.
- 3- Contour intervals are to be selected at 660 FT (200 M).

OCA(H)	A	B	C	D
Straight				
Circling	4600' (638')		4660' (698')	

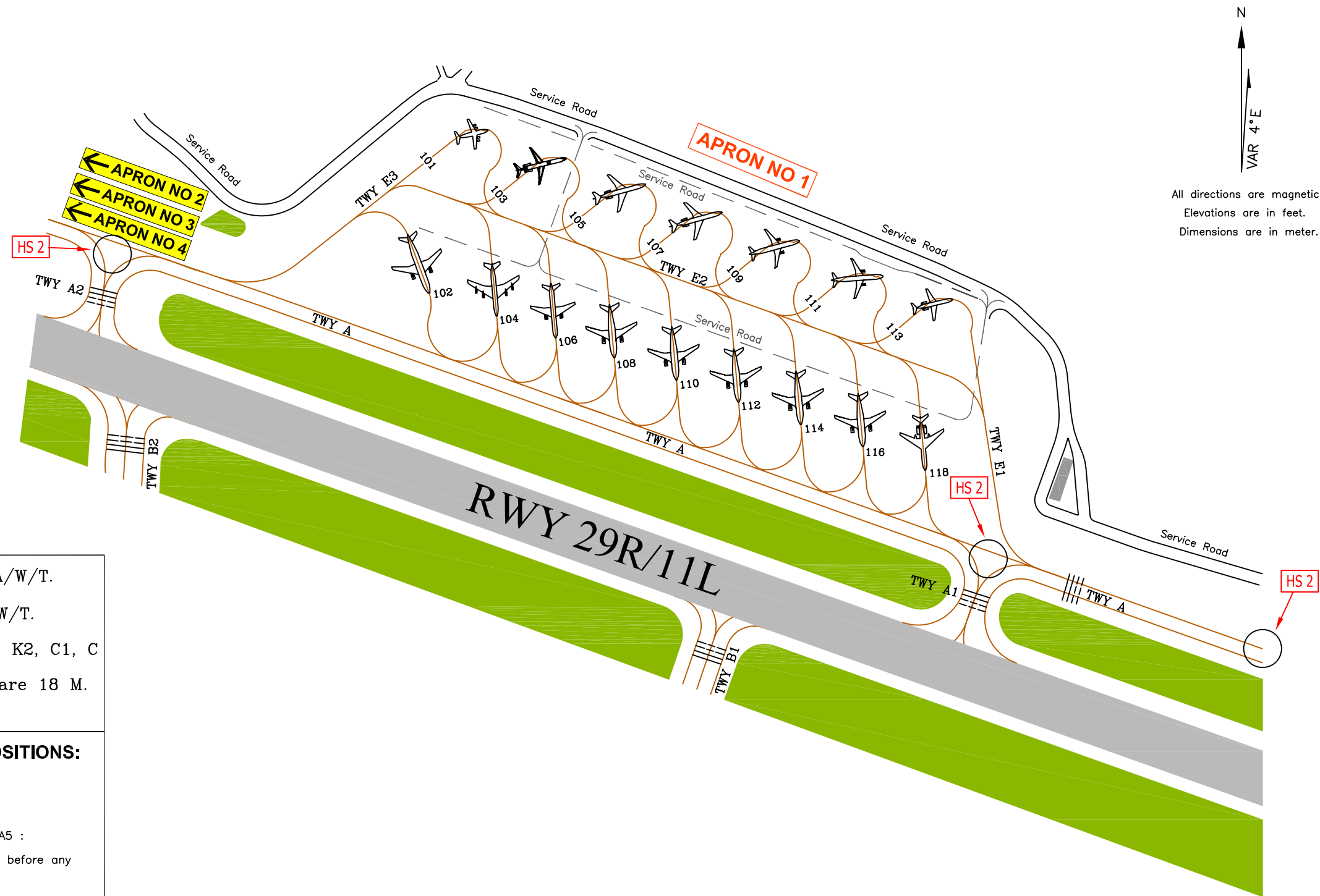
PARKING/DOCKING CHART - ICAO

ARP 35°41'20" N
051°18'53" E

AD ELEV 3962 FT

TWR	118.100, 124.450
GND	121.700, 121.900
DELIVERY	121.850
ATIS	128.000

TEHRAN/MEHRABAD INTL



All directions are magnetic.
Elevations are in feet.
Dimensions are in meter.

- Apron Surface: Asphalt, PCN 55/F/A/W/T.
- TWY Surface: Asphalt, PCN 55/F/A/W/T.
- All TWY Width 23 M except TWYs K1, K2, C1, C (between TWY C6 & TWY K1) which are 18 M.
- All TWY Edge Lighted.

3 HOT SPOT AREA LOCATED AT FLW POSITIONS:

HOT SPOT NO1: Crossing TWY A6 and RWY 11L :

ACFT on TWY A6 must hold short of RWY 29R/11L.

HOT SPOT NO2: Crossing TWY A and TWY A1, A2, A3 and A5 :

ACFT taxiing on TWY A must hold short of any related TWY before any turn toward RWY 29R/11L.

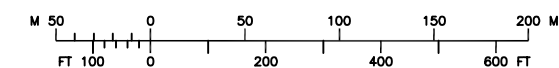
HOT SPOT NO3: TWY G:

ACFT on TWY B7 and TWY G toward cargo apron must obtain clearance for crossing RWY 29R/11L.

Taxi out and stand evacuation:

Apron NO.1, Stand 101:

- all aircraft heavier than F100 shall coordinate with follow me car before start;



Scale 1:4000

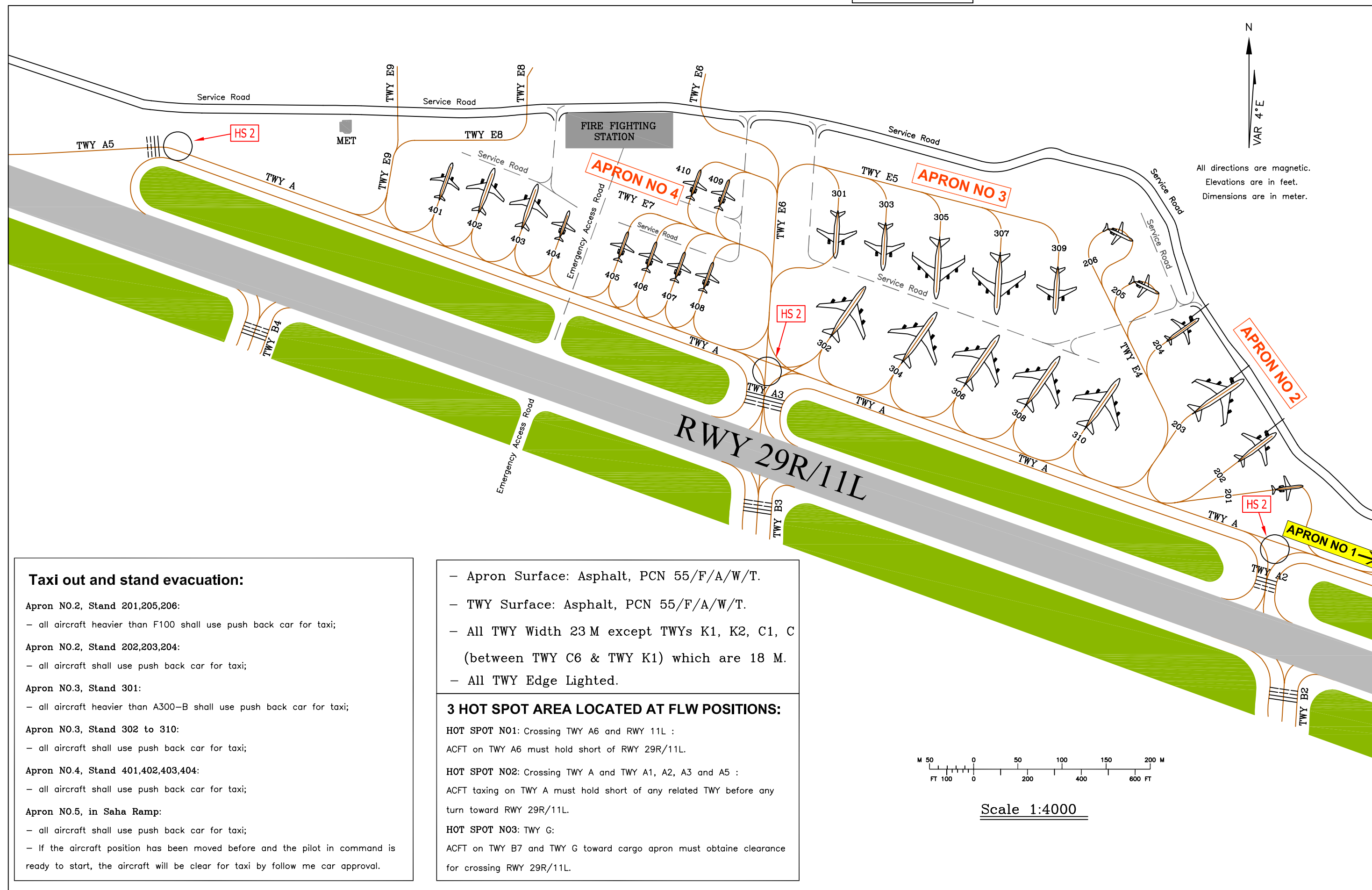
PARKING/DOCKING CHART - ICAO

ARP 35°41'20" N
051°18'53" E

AD ELEV 3962 FT

TWR	118.100, 124.450
GND	121.700, 121.900
DELIVERY	121.850
ATIS	128.000

TEHRAN/MEHRABAD INTL



All directions are magnetic.
Elevations are in feet.
Dimensions are in meter.

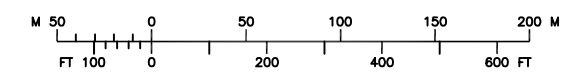
Taxi out and stand evacuation:

- Apron NO.2, Stand 201,205,206:**
 - all aircraft heavier than F100 shall use push back car for taxi;
- Apron NO.2, Stand 202,203,204:**
 - all aircraft shall use push back car for taxi;
- Apron NO.3, Stand 301:**
 - all aircraft heavier than A300-B shall use push back car for taxi;
- Apron NO.3, Stand 302 to 310:**
 - all aircraft shall use push back car for taxi;
- Apron NO.4, Stand 401,402,403,404:**
 - all aircraft shall use push back car for taxi;
- Apron NO.5, in Saha Ramp:**
 - all aircraft shall use push back car for taxi;
 - If the aircraft position has been moved before and the pilot in command is ready to start, the aircraft will be clear for taxi by follow me car approval.

- Apron Surface: Asphalt, PCN 55/F/A/W/T.
- TWY Surface: Asphalt, PCN 55/F/A/W/T.
- All TWY Width 23 M except TWYs K1, K2, C1, C (between TWY C6 & TWY K1) which are 18 M.
- All TWY Edge Lighted.

3 HOT SPOT AREA LOCATED AT FLW POSITIONS:

- HOT SPOT N01:** Crossing TWY A6 and RWY 11L :
ACFT on TWY A6 must hold short of RWY 29R/11L.
- HOT SPOT N02:** Crossing TWY A and TWY A1, A2, A3 and A5 :
ACFT taxiing on TWY A must hold short of any related TWY before any turn toward RWY 29R/11L.
- HOT SPOT N03:** TWY G:
ACFT on TWY B7 and TWY G toward cargo apron must obtain clearance for crossing RWY 29R/11L.



Scale 1:4000

STANDARD DEPARTURE CHART-
INSTRUMENT (SID)-ICAO

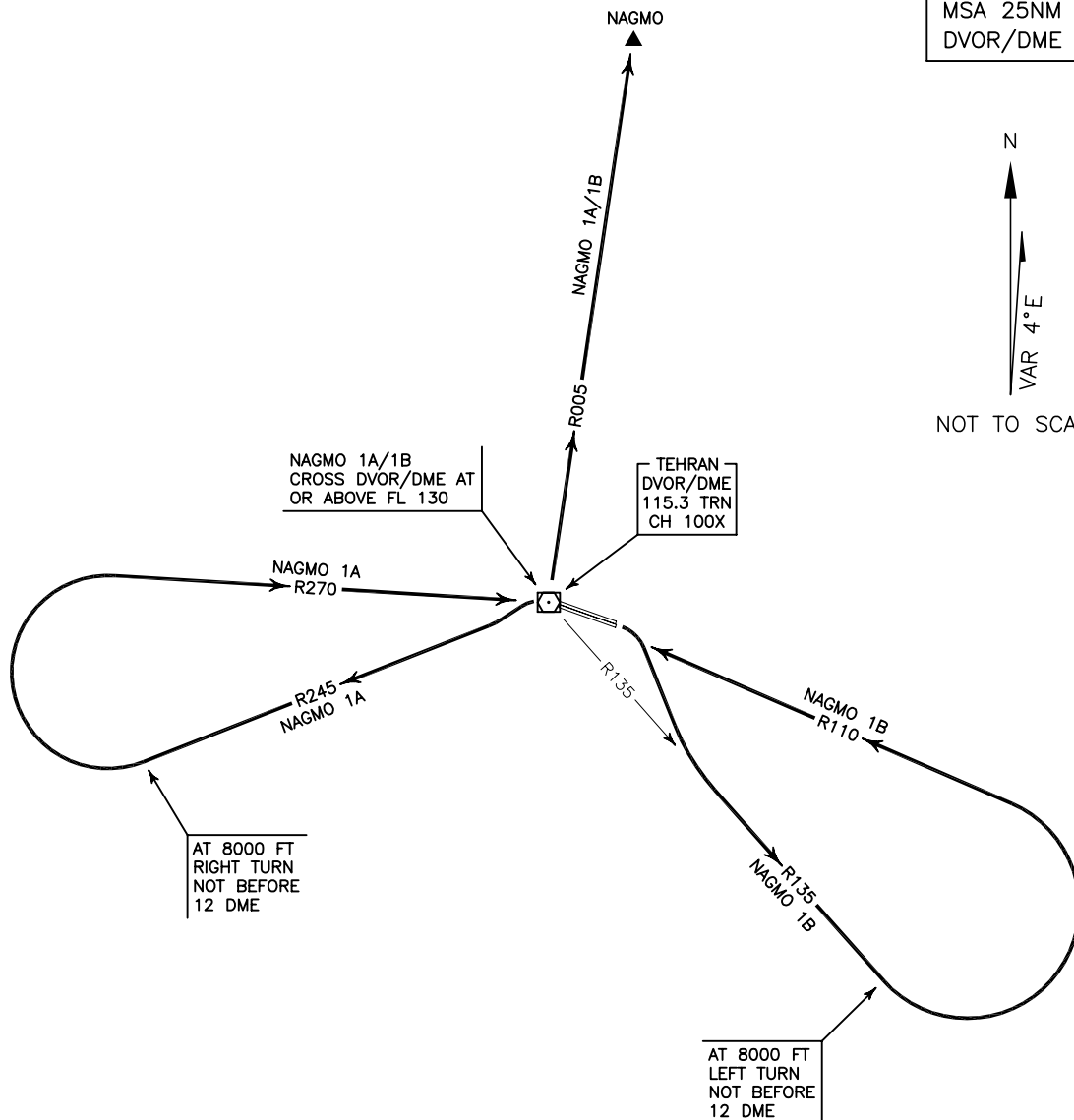
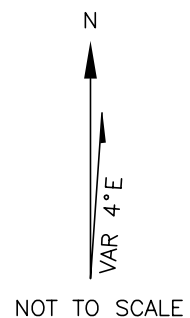
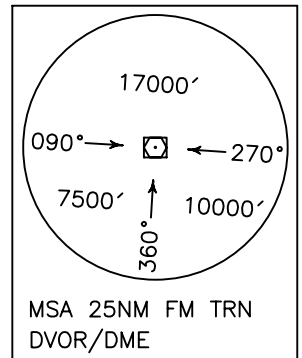
TRANSITION ALTITUDE 9000 FT
TRANSITION LEVEL FL 110

APP	119.700, 125.100
RADAR	119.700, 125.100
TWR	118.100, 124.450
GND	121.700, 121.900
ATIS	128.000

TEHRAN/MEHRABAD
RWY 11L/R, 29L/R
NAGMO 1A/1B

ALL DIRECTIONS ARE MAGNETIC.
LEVEL AND ELEVATIONS ARE IN FEET.
DISTANCES ARE IN NAUTICAL MILES.

TMA above FL200 class "A",
at FL 200 and below class "C".
CTR and ATZ class "D".



NAGMO 1A DEP:

DEP RWY 29L/R - After take off turn left to intercept RDL 245 to 8000 FT, then turn right (not before 12 DME) to intercept RDL 270 to cross TRN DVOR/DME at or above FL 130, then turn left to intercept RDL 005 to NAGMO and climb to cleared level.

NOTE: Departure turn limited to 240 KT IAS MAX.

NAGMO 1B DEP:

DEP RWY 11L/R - After take off turn right to intercept RDL 135 to 8000 FT, then turn left (not before 12 DME) to intercept RDL 110 to cross TRN DVOR/DME at or above FL 130, then turn right to intercept RDL 005 to NAGMO and climb to cleared level.

NOTE: Departure turn limited to 240 KT IAS MAX.

STANDARD DEPARTURE CHART-
INSTRUMENT (SID)-ICAO

TRANSITION ALTITUDE 9000 FT
TRANSITION LEVEL FL 110

APP	119.700, 125.100
RADAR	119.700, 125.100
TWR	118.100, 124.450
GND	121.700, 121.900
ATIS	128.000

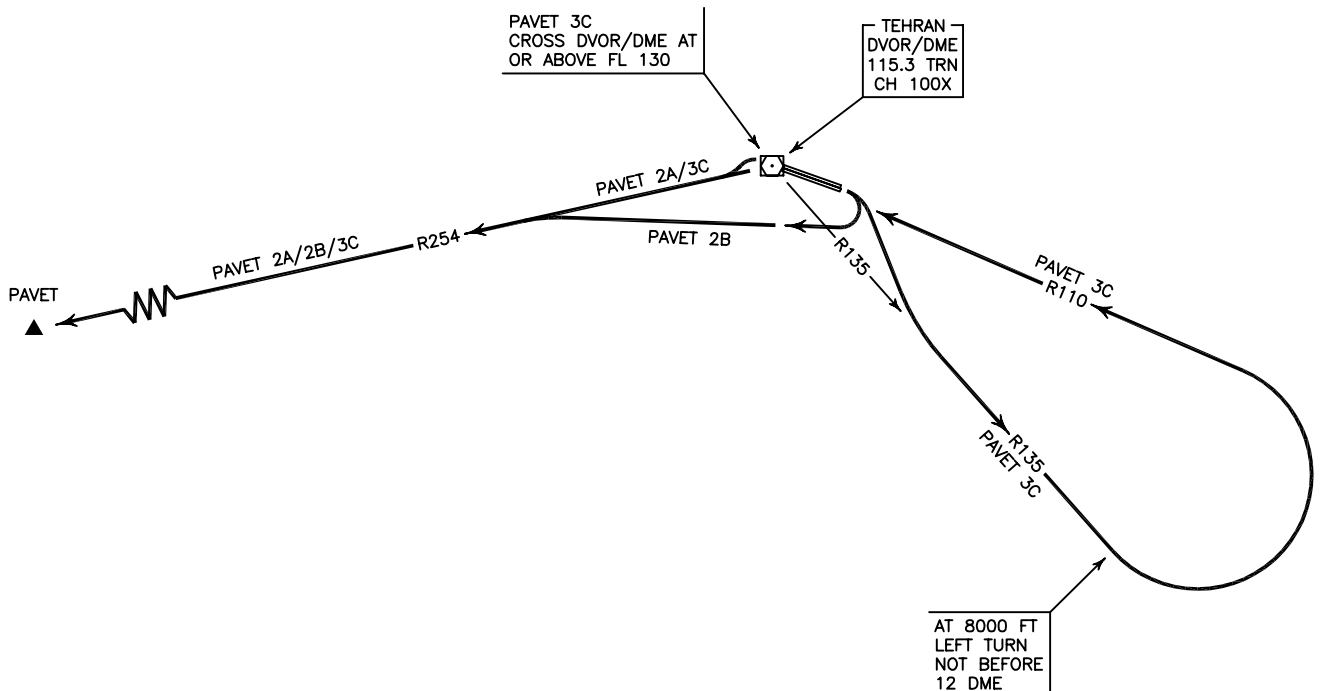
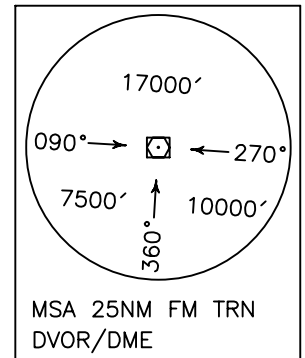
TEHRAN/MEHRABAD
RWY 11L/R, 29L/R
PAVET 2A/2B/3C

ALL DIRECTIONS ARE MAGNETIC.
LEVEL AND ELEVATIONS ARE IN FEET.
DISTANCES ARE IN NAUTICAL MILES.

TMA above FL200 class "A",
at FL 200 and below class "C".
CTR and ATZ class "D".



NOT TO SCALE



PAVET 2A DEP:

DEP RWY 29L/R - After take off turn left climb on RDL 254 to PAVET and climb to cleared level.

PAVET 2B DEP:

DEP RWY 11L/R - After take off turn right climb on RDL 254 to PAVET and climb to cleared level.

PAVET 3C DEP:

DEP RWY 11L/R - After take off turn right to intercept RDL 135 to 8000 FT, then turn left (not before 12 DME) to intercept RDL 110 to cross TRN DVOR/DME at or above FL 130, then intercept RDL 254 to PAVET and climb to cleared level.

NOTE: Departure turn limited to 240 KT IAS MAX.

STANDARD DEPARTURE CHART-
INSTRUMENT (SID)-ICAO

TRANSITION ALTITUDE 9000 FT
TRANSITION LEVEL FL 110

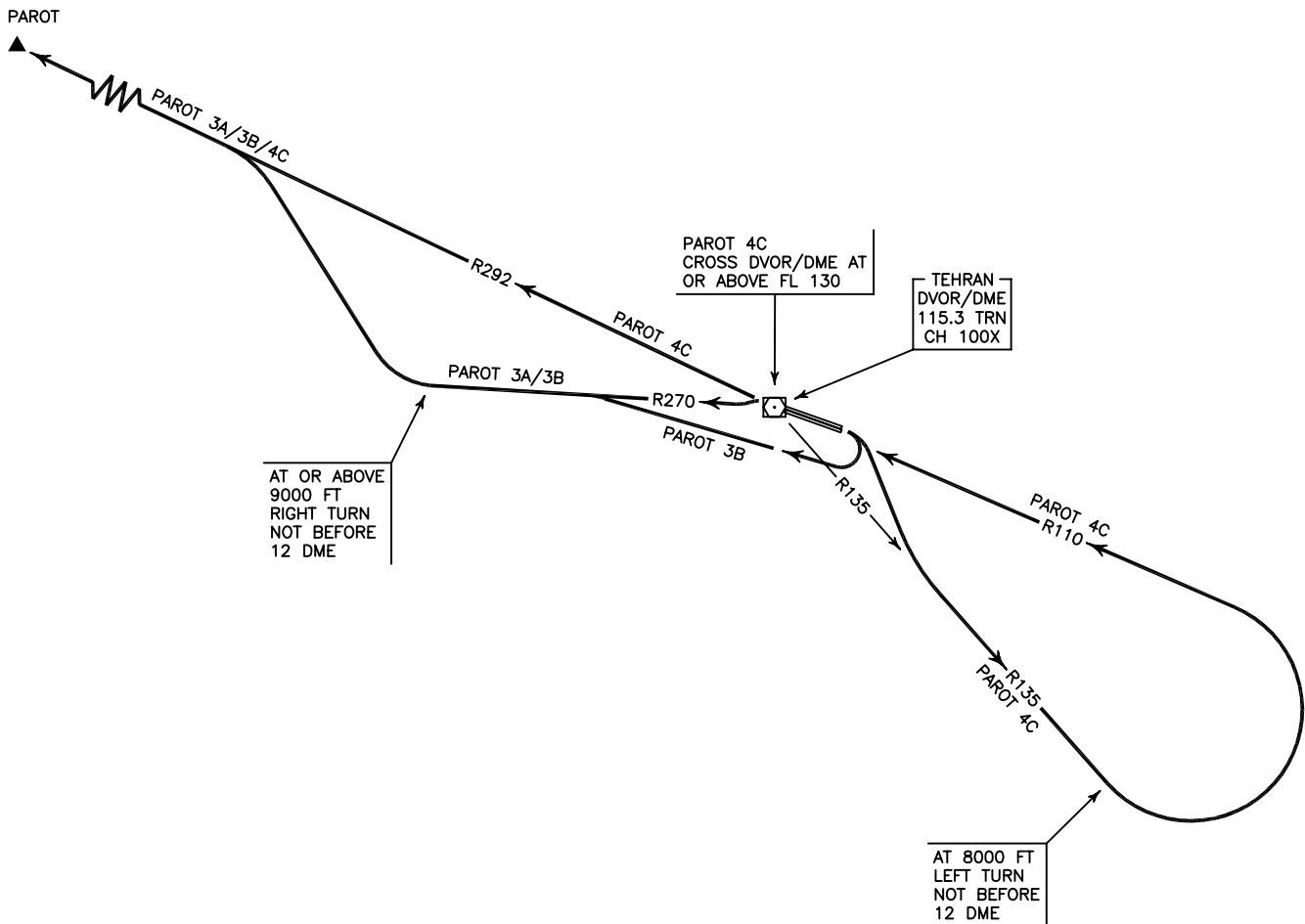
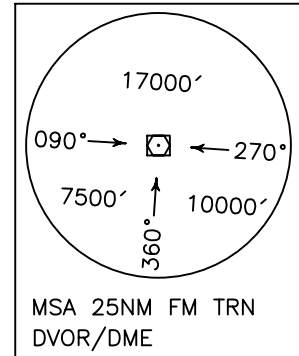
APP	119.700, 125.100
RADAR	119.700, 125.100
TWR	118.100, 124.450
GND	121.700, 121.900
ATIS	128.000

TEHRAN/MEHRABAD
RWY 11L/R, 29L/R
PAROT 3A/3B/4C

ALL DIRECTIONS ARE MAGNETIC.
LEVEL AND ELEVATIONS ARE IN FEET.
DISTANCES ARE IN NAUTICAL MILES.

TMA above FL200 class "A",
at FL 200 and below class "C".
CTR and ATZ class "D".

N
VAR 4°E
NOT TO SCALE



PAROT 3A DEP:

DEP RWY 29L/R - After take off turn left to intercept RDL 270 to 9000 FT or above, then turn right (not before 12 DME) to intercept RDL 292 to PAROT and climb to cleared level.

PAROT 3B DEP:

DEP RWY 11L/R - After take off turn right to intercept RDL 270 to 9000 FT or above, then turn right (not before 12 DME) to intercept RDL 292 to PAROT and climb to cleared level.

PAROT 4C DEP:

DEP RWY 11L/R - After take off turn right to intercept RDL 135 to 8000 FT, then turn left (not before 12 DME) to intercept RDL 110 to cross TRN DVOR/DME at or above FL 130, then intercept RDL 292 to PAROT and climb to cleared level.

NOTE: Departure turn limited to 240 KT IAS MAX.

STANDARD DEPARTURE CHART-
INSTRUMENT (SID)-ICAO

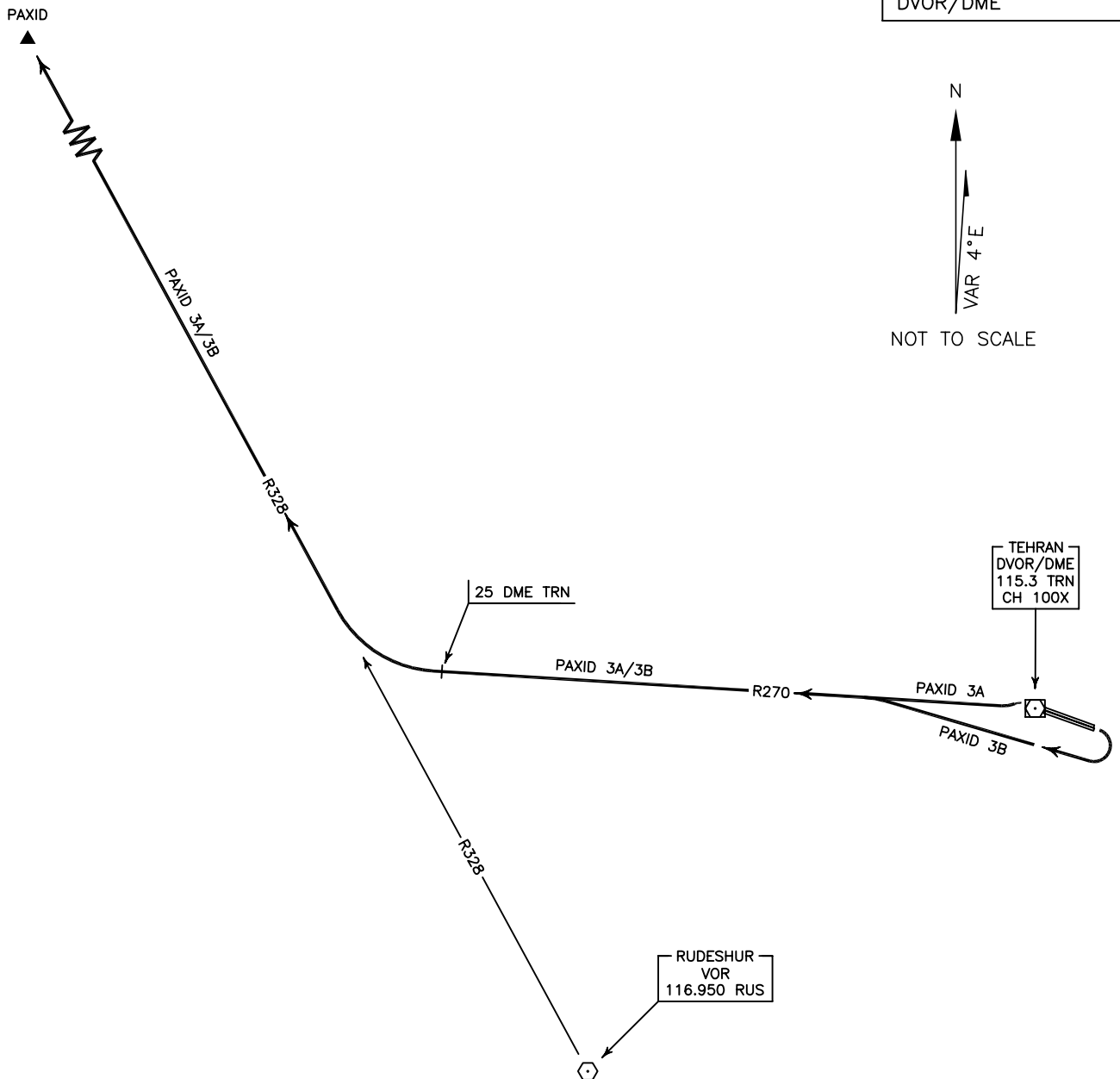
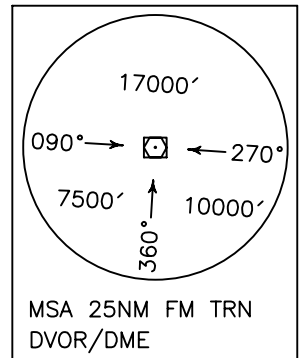
TRANSITION ALTITUDE 9000 FT
TRANSITION LEVEL FL 110

APP	119.700, 125.100
RADAR	119.700, 125.100
TWR	118.100, 124.450
GND	121.700, 121.900
ATIS	128.000

TEHRAN/MEHRABAD
RWY 11L/R, 29L/R
PAXID 3A/3B

ALL DIRECTIONS ARE MAGNETIC.
LEVEL AND ELEVATIONS ARE IN FEET.
DISTANCES ARE IN NAUTICAL MILES.

TMA above FL200 class "A",
at FL 200 and below class "C".
CTR and ATZ class "D".



PAXID 3A DEP:

DEP RWY 29L/R - After take off turn left to intercept RDL 270, at 25 DME turn right to intercept RDL 328 FM RUS VOR to PAXID and climb to cleared level.

PAXID 3B DEP:

DEP RWY 11L/R - After take off turn right to intercept RDL 270, at 25 DME turn right to intercept RDL 328 FM RUS VOR to PAXID and climb to cleared level.

STANDARD DEPARTURE CHART-
INSTRUMENT (SID)-ICAO

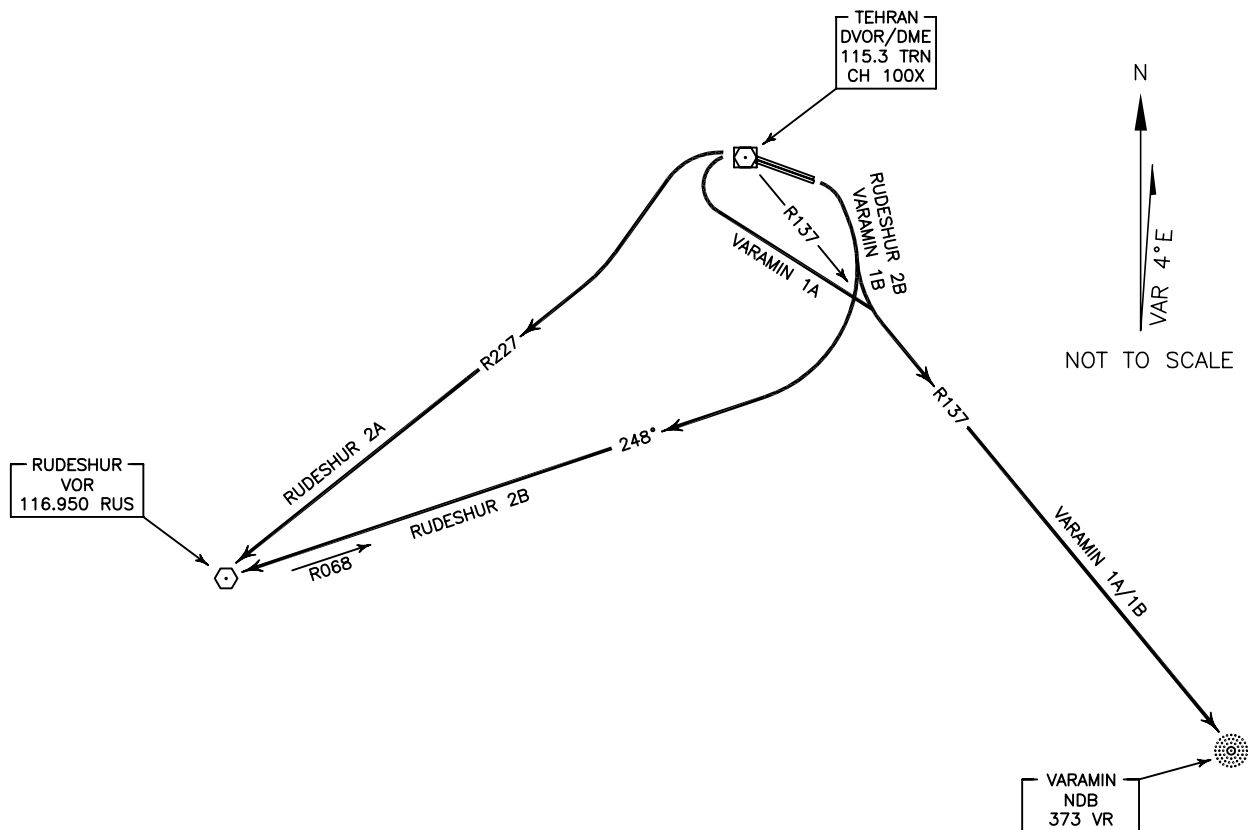
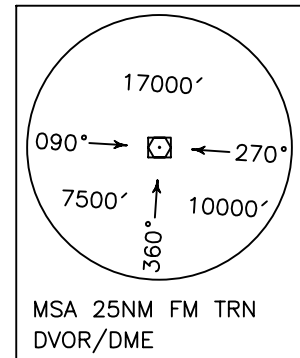
TRANSITION ALTITUDE 9000 FT
TRANSITION LEVEL FL 110

APP	119.700, 125.100
RADAR	119.700, 125.100
TWR	118.100, 124.450
GND	121.700, 121.900
ATIS	128.000

TEHRAN/MEHRABAD
RWY 11L/R, 29L/R
VARAMIN 1A/1B
RUDESHUR 2A/2B

ALL DIRECTIONS ARE MAGNETIC.
LEVEL AND ELEVATIONS ARE IN FEET.
DISTANCES ARE IN NAUTICAL MILES.

TMA above FL200 class "A",
at FL 200 and below class "C".
CTR and ATZ class "D".



VARAMIN 1A DEP:

DEP RWY 29L/R - After take off turn left climb on RDL 137 to VR NDB and climb to cleared level.

VARAMIN 1B DEP:

DEP RWY 11L/R - After take off turn right climb on RDL 137 to VR NDB and climb to cleared level.

RUDESHUR 2A DEP:

DEP RWY 29L/R - After take off turn left climb on RDL 227 to RUS VOR and climb to cleared level.

RUDESHUR 2B DEP:

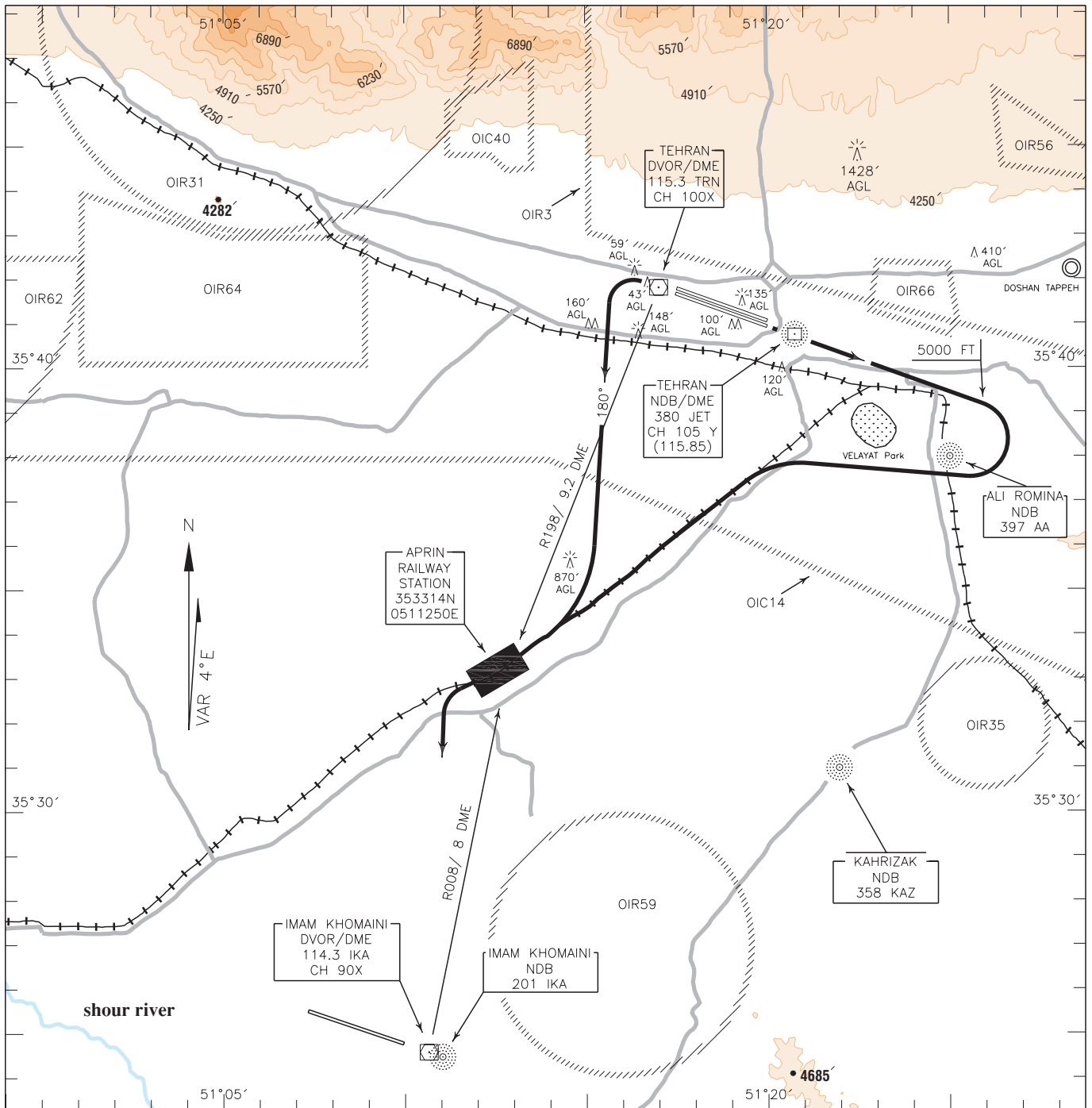
DEP RWY 11L/R - After take off turn right climb on TR 248° MAG (RDL 068 FM RUS VOR) to RUS VOR, and climb to cleared level.

VFR CHART

AERODROME ELEV. 3962 FT
HEIGHTS RELATED TO
AERODROME ELEVATION

APP	119.700, 125.100
RADAR	119.700, 125.100
TWR	118.100, 124.450
GND	121.700, 121.900
ATIS	128.000

TEHRAN/MEHRABAD
APRIN A/B
RWY 29L/R, 11L/R



APRIN A DEP: RWY 29L/R – After take off turn left proceed on TR 180° to follow south west main railway, maintain 5000 FT or below (higher level by APP if required) to point APRIN (railway station), then contact IKA TWR on 118.7 MHZ to obtain approval to join traffic pattern.

APRIN B DEP: RWY 11L/R – After take off climb RWY heading to 5000 FT, then turn right to follow south west main railway to point APRIN, after passing VELAYAT Park, may descend below 5000 FT, then contact IKA TWR on 118.7 MHZ to obtain approval to join traffic pattern.

NOTE:

Contour intervals are to be selected at 660 FT (200 M).



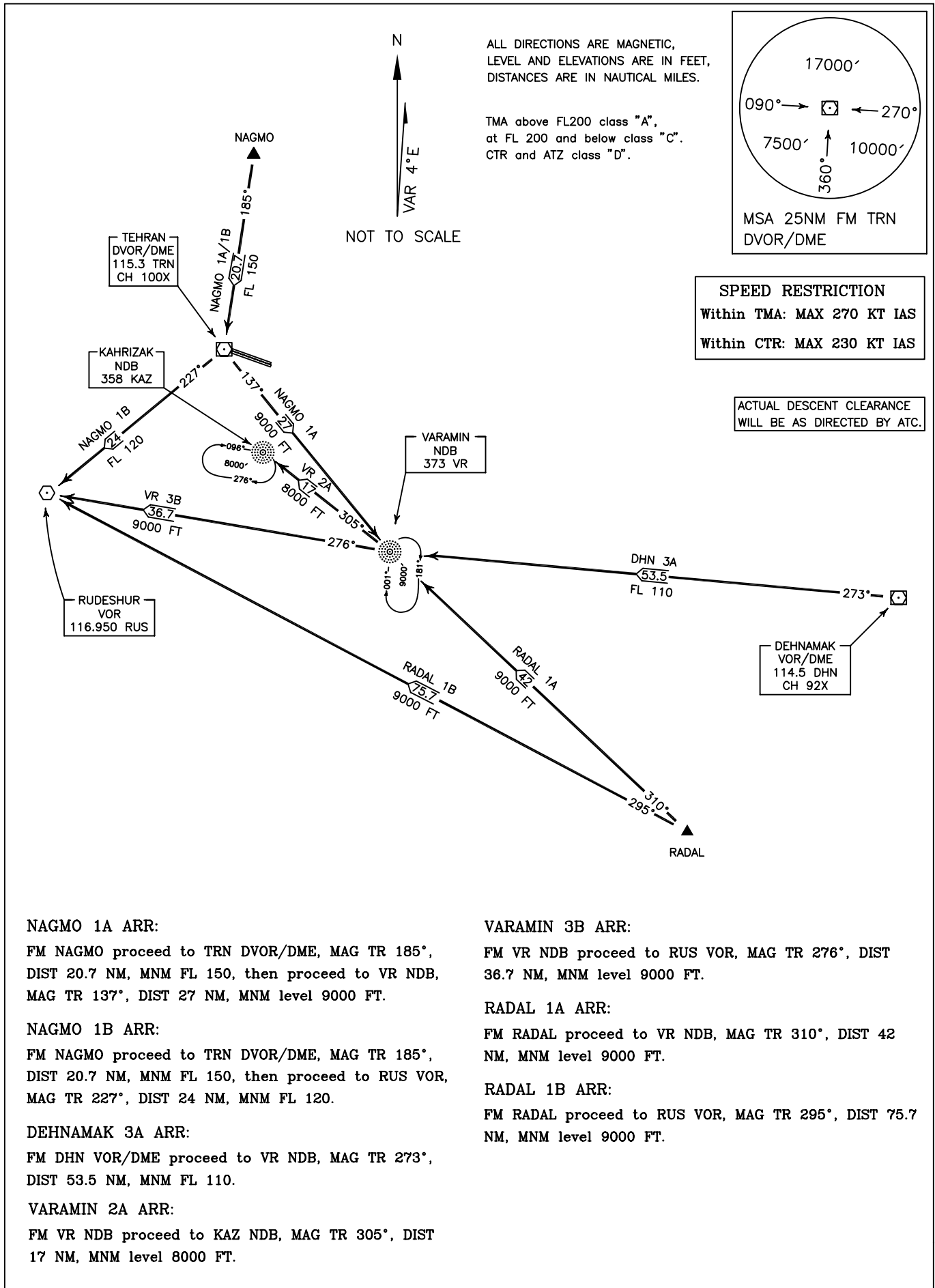
SCALE 1:250000

STANDARD ARRIVAL CHART—
INSTRUMENT (STAR)—ICAO

TRANSITION ALTITUDE 9000 FT
TRANSITION LEVEL FL 110

APP	119.700, 125.100
RADAR	119.700, 125.100
TWR	118.100, 124.450
GND	121.700, 121.900
ATIS	128.000

TEHRAN/MEHRABAD
RWY 11L/R, 29L/R
NAGMO 1A/1B, DEHNAMAK 3A
VARAMIN 2A/3B, RADAL 1A/1B



STANDARD ARRIVAL CHART-
INSTRUMENT (STAR)-ICAO

TRANSITION ALTITUDE 9000 FT
TRANSITION LEVEL FL 110

APP	119.700, 125.100
RADAR	119.700, 125.100
TWR	118.100, 124.450
GND	121.700, 121.900
ATIS	128.000

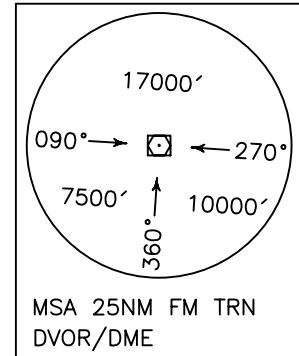
TEHRAN/MEHRABAD
RWY 11L/R, 29L/R
DEHNAMAK 1D
RADAL 1D
BOXAM 1D

ALL DIRECTIONS ARE MAGNETIC,
LEVEL AND ELEVATIONS ARE IN FEET,
DISTANCES ARE IN NAUTICAL MILES.

TMA above FL200 class "A",
at FL 200 and below class "C".
CTR and ATZ class "D".

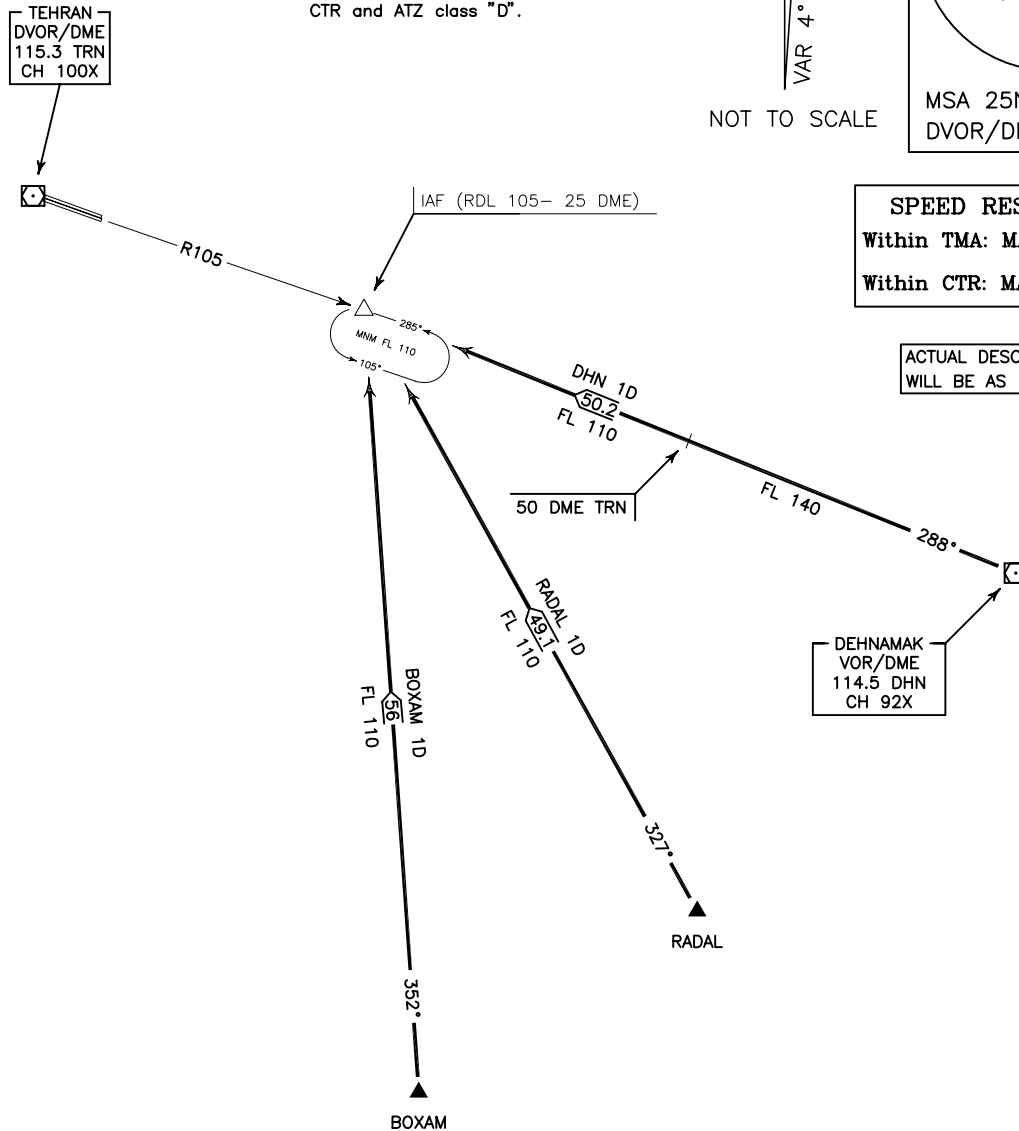


NOT TO SCALE



SPEED RESTRICTION
Within TMA: MAX 270 KT IAS
Within CTR: MAX 230 KT IAS

ACTUAL DESCENT CLEARANCE
WILL BE AS DIRECTED BY ATC.



DEHNAMAK 1D ARR:

FM DEHNAMAK proceed to IAF (RDL 105- 25 DME), MAG TR 288°, DIST 50.2 NM, MNM FL 140 up to 50 DME FM TRN DVOR/DME then MNM FL 110.

RADAL 1D ARR:

FM RADAL proceed to IAF (RDL 105- 25 DME), MAG TR 327°, DIST 49.1 NM, MNM FL 110.

BOXAM 1D ARR:

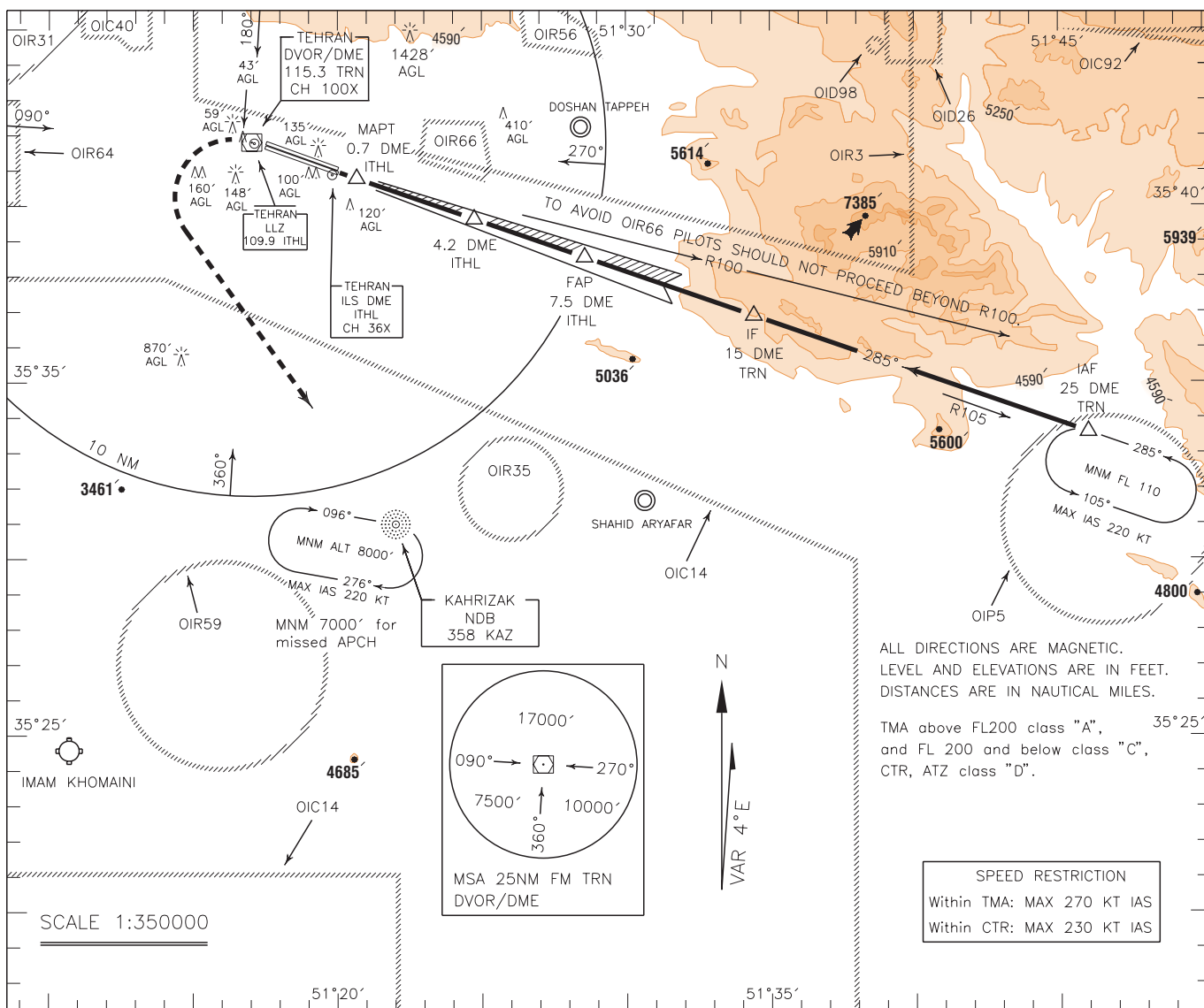
FM BOXAM proceed to IAF (RDL 105- 25 DME), MAG TR 352°, DIST 56 NM, MNM FL 110.

INSTRUMENT
APPROACH
CHART-ICAO

AERODROME ELEV. 3962 FT
HEIGHTS RELATED TO
THR RWY 29L ELEV. 3794 FT

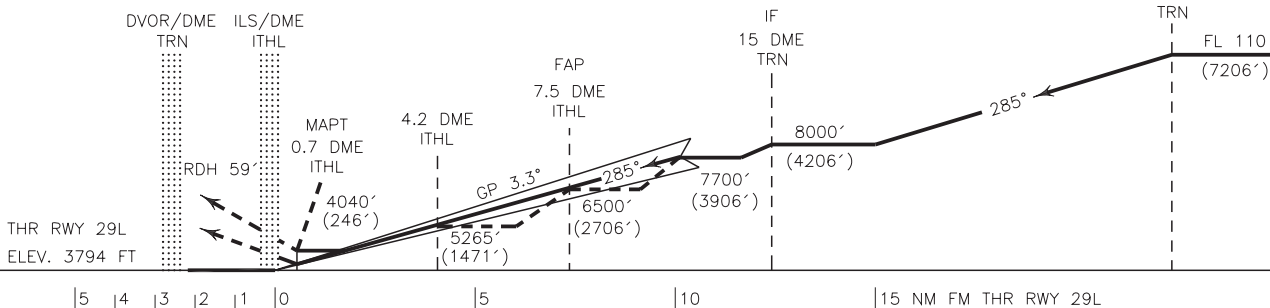
APP	119.700, 125.100
RADAR	119.700, 125.100
TWR	118.100, 124.450
GND	121.700, 121.900
ATIS	128.000

TEHRAN/MEHRABAD
ILS 1 RWY 29L
CAT A/B/C/D



MISSED APPROACH: At 0.7 DME ITHL climb straight ahead to DVOR/DME, then turn left to KAZ NDB and rejoin HLDG at 7000 FT.

TRL FL110
TA 9000'



NOTE:

- 1-Circling not authorized to the north of AD.
- 2-Contour intervals are to be selected at 660 FT (200 M).

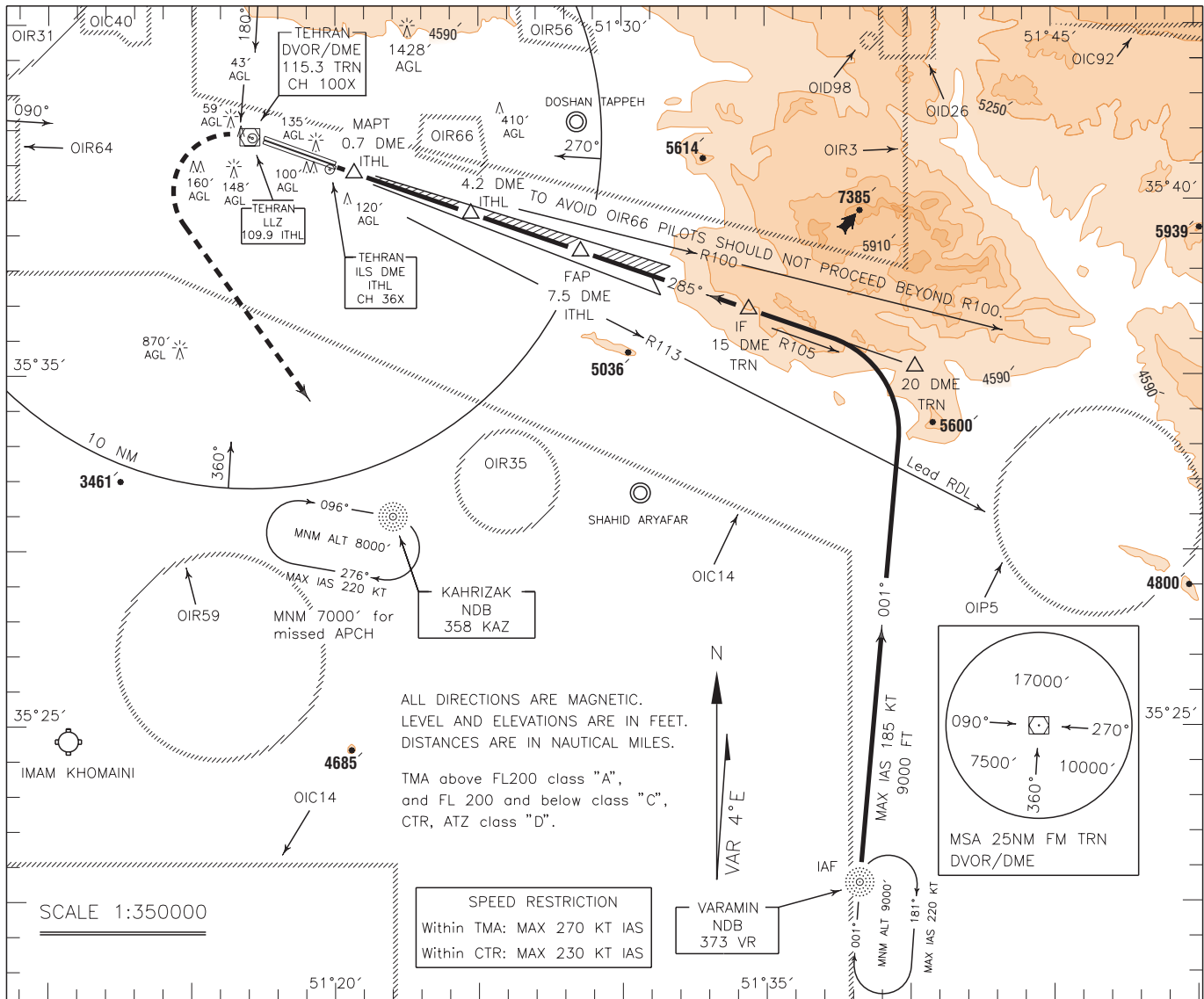
OCA(H)	A	B	C	D
Straight		4040' (246')		
GP INOP		4450' (656')		
Circling		4560' (598')		4660' (698')

INSTRUMENT
APPROACH
CHART-ICAO

AERODROME ELEV. 3962 FT
HEIGHTS RELATED TO
THR RWY 29L ELEV. 3794 FT

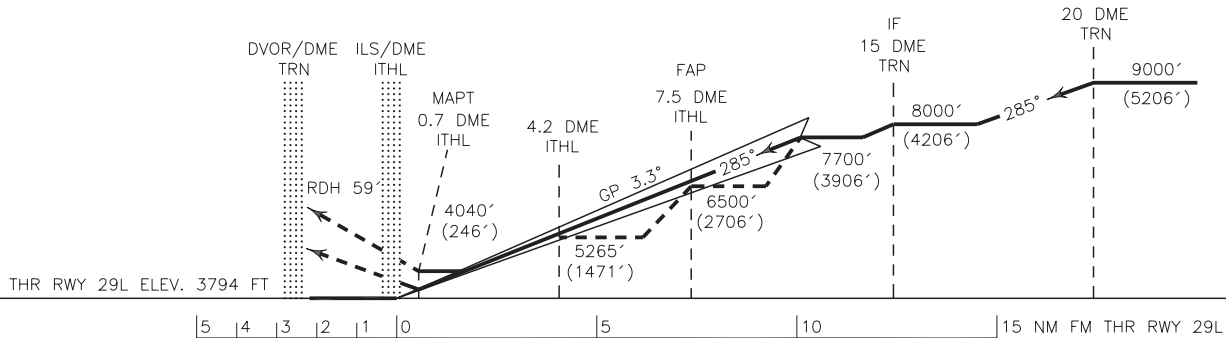
APP	119.700, 125.100
RADAR	119.700, 125.100
TWR	118.100, 124.450
GND	121.700, 121.900
ATIS	128.000

TEHRAN/MEHRABAD
ILS 2 RWY 29L
CAT A/B/C/D



MISSED APPROACH: At 0.7 DME ITHL climb straight ahead to DVOR/DME, then turn left to KAZ NDB and rejoin HLDG at 7000 FT.

TRL FL110
TA 9000'



NOTE:

- 1-Circling not authorized to the north of AD.
- 2-Contour intervals are to be selected at 660 FT (200 M).

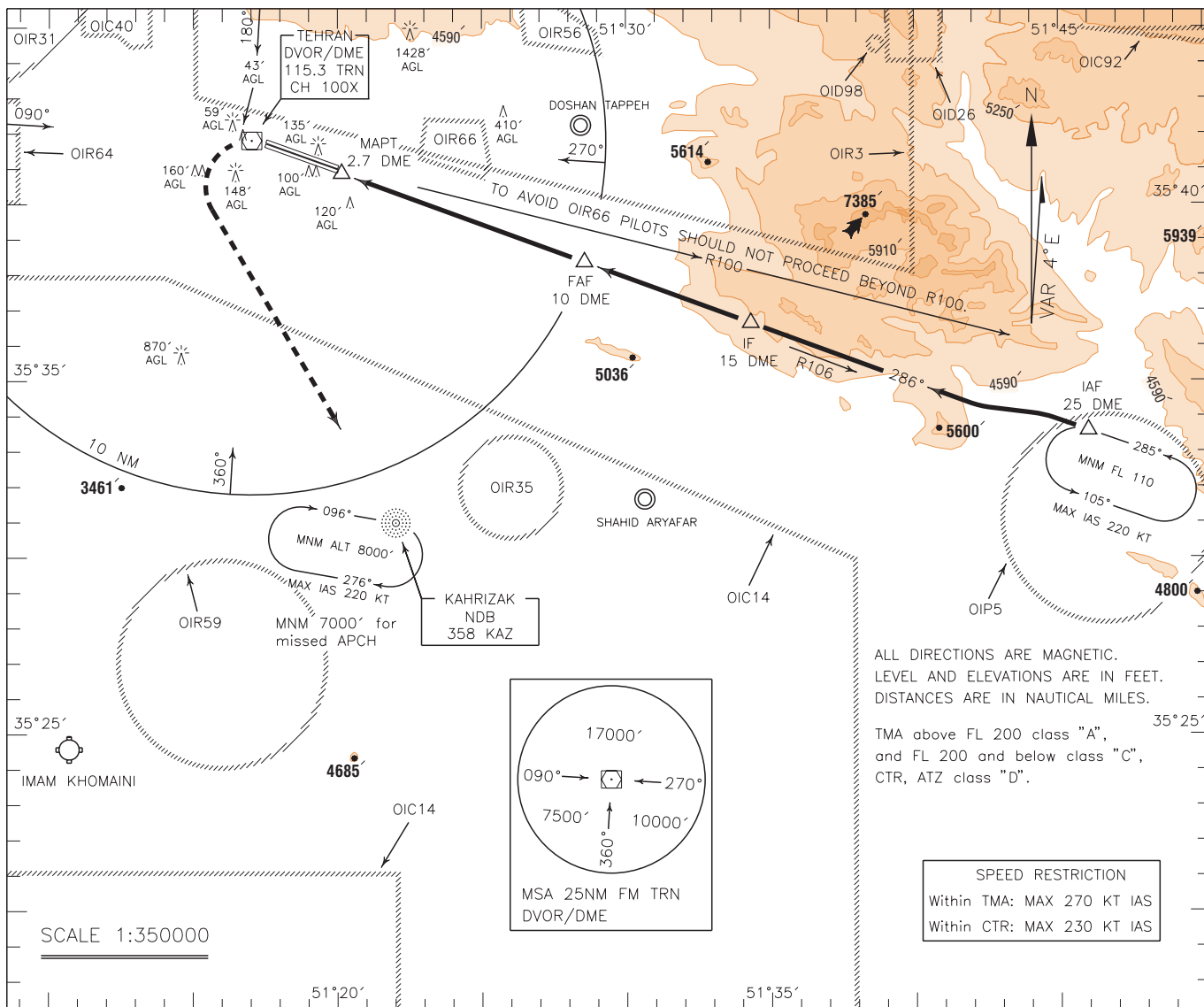
OCA(H)	A	B	C	D
Straight		4040' (246')		
GP INOP		4450' (656')		
Circling		4560' (598')		4660' (698')

INSTRUMENT
APPROACH
CHART-ICAO

AERODROME ELEV. 3962 FT
HEIGHTS RELATED TO
THR RWY 29L ELEV. 3794 FT

APP	119.700, 125.100
RADAR	119.700, 125.100
TWR	118.100, 124.450
GND	121.700, 121.900
ATIS	128.000

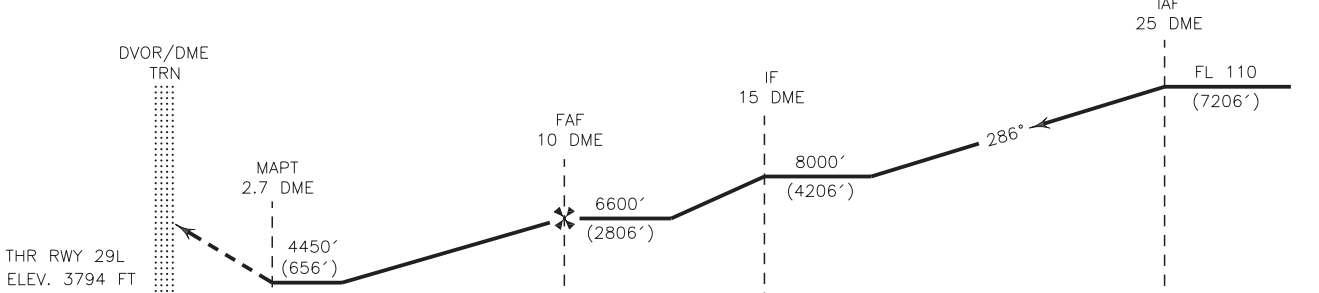
TEHRAN/MEHRABAD
VOR/DME 1
RWY 29L
CAT A/B/C/D



ALL DIRECTIONS ARE MAGNETIC.
LEVEL AND ELEVATIONS ARE IN FEET.
DISTANCES ARE IN NAUTICAL MILES.
TMA above FL 200 class "A",
and FL 200 and below class "C",
CTR, ATZ class "D".

SPEED RESTRICTION
Within TMA: MAX 270 KT IAS
Within CTR: MAX 230 KT IAS

MISSED APPROACH: At 2.7 DME climb straight ahead to DVOR/DME, then turn left to KAZ NDB and rejoin HLDG at 7000 FT.



OCA(H)	A	B	C	D
Straight	4450' (656')			
Circling	4560' (598')		4660' (698')	

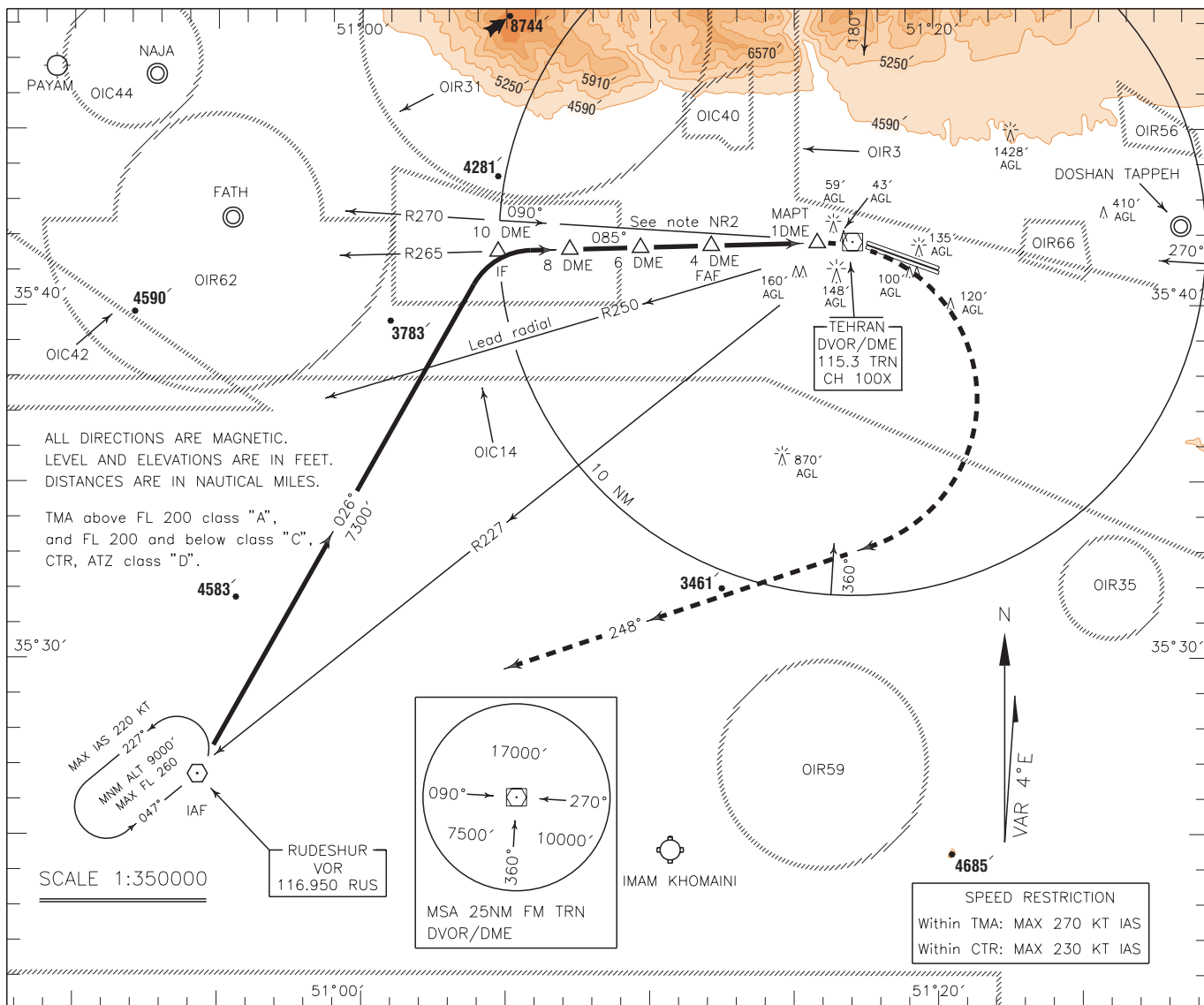
NOTE:
1-Circling not authorized to the north of AD.
2-Contour intervals are to be selected at 660 FT (200 M).

INSTRUMENT
APPROACH
CHART-ICAO

AERODROME ELEV. 3962 FT
HEIGHTS RELATED TO
THR RWY 11L ELEV. 3962 FT

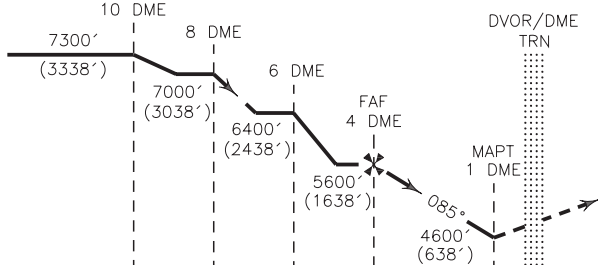
APP	119.700, 125.100
RADAR	119.700, 125.100
TWR	118.100, 124.450
GND	121.700, 121.900
ATIS	128.000

TEHRAN/MEHRABAD
VOR/DME 3
RWY 11L/R
CAT A/B/C/D



MISSED APPROACH: At 1 DME turn right to establish TR 248° to RUS VOR, climb to 7000 FT, further climb by ATC.

TRL FL110
TA 9000'



THR RWY 11L ELEV. 3962 FT
THR RWY 11R ELEV. 3949 FT

15 10 5 0 1 2 3 4 5 NM FM THR RWY 11L/R

NOTE:

- 1- Circling not authorized to the north of AD.
- 2- Pilots are requested not to proceed beyond RDL 270 to avoid high terrain.
- 3- Contour intervals are to be selected at 660 FT (200 M).

OCA(H)	A	B	C	D
Straight	4600'(638')	RWY 11L -	4600'(651')	RWY 11R
Circling	4600'(638')		4660'(698')	

STANDARD DEPARTURE CHART-
INSTRUMENT (SID)-ICAO

TRANSITION ALTITUDE 9000 FT
TRANSITION LEVEL FL 110

APP	119.700, 125.100
RADAR	119.700, 125.100
TWR	118.100, 124.450
GND	121.700, 121.900
ATIS	128.000

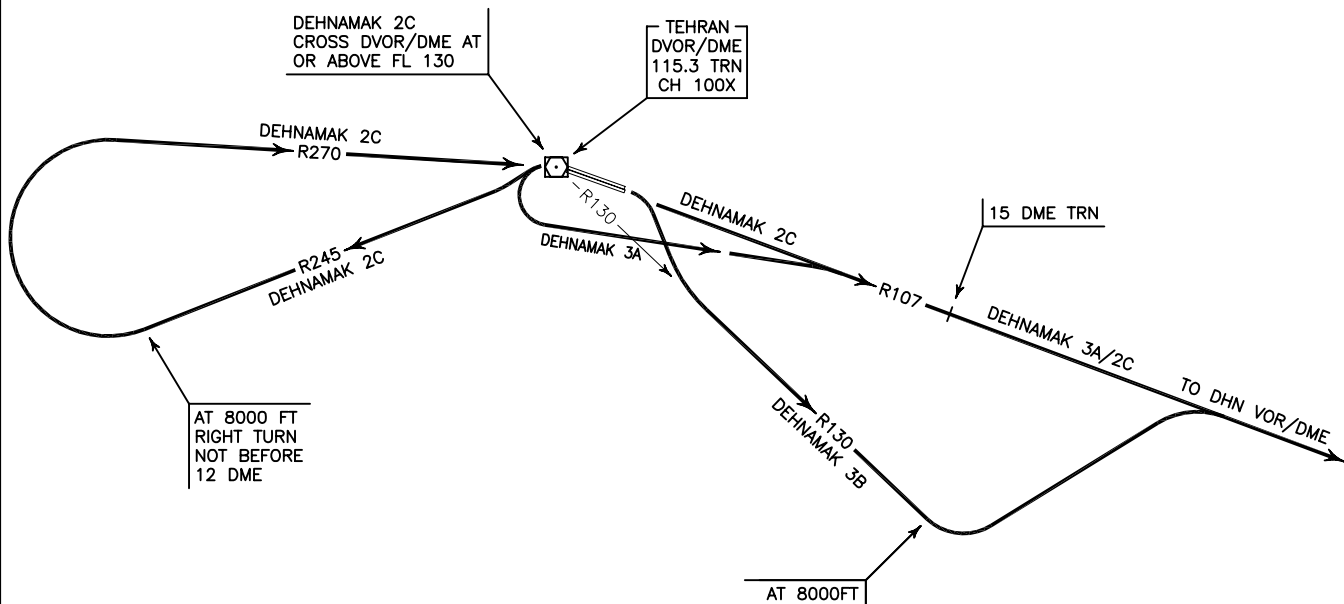
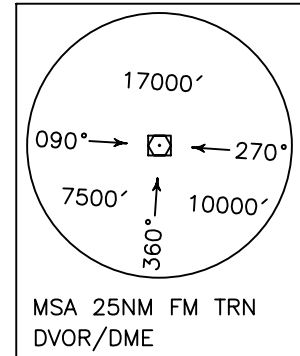
TEHRAN/MEHRABAD
RWY 11L/R, 29L/R
DEHNAMAK 3A/3B/2C

ALL DIRECTIONS ARE MAGNETIC.
LEVEL AND ELEVATIONS ARE IN FEET.
DISTANCES ARE IN NAUTICAL MILES.

TMA above FL200 class "A",
at FL 200 and below class "C".
CTR and ATZ class "D".



NOT TO SCALE



DEHNAMAK 3A DEP:

DEP RWY 29L/R - After take off turn left to intercept RDL 107 not later than 15 DME FM TRN DVOR/DME to DHN VOR/DME and climb to cleared level.

DEHNAMAK 3B DEP

DEP RWY 11L/R - After take off turn right to intercept RDL 130 to 8000 FT, then turn left to intercept RDL 107 FM TRN DVOR/DME to DHN VOR/DME and climb to cleared level.

DEHNAMAK 2C DEP:

DEP RWY 29L/R - After take off turn left to intercept RDL 245 to 8000 FT, then turn right (not before 12 DME) to intercept RDL 270 to cross TRN DVOR/DME at or above FL 130, then intercept RDL 107 FM TRN DVOR/DME to DHN VOR/DME and climb to cleared level.

NOTE: Departure turn limited to 240 KT IAS MAX.

STANDARD DEPARTURE CHART-
INSTRUMENT (SID)-ICAO

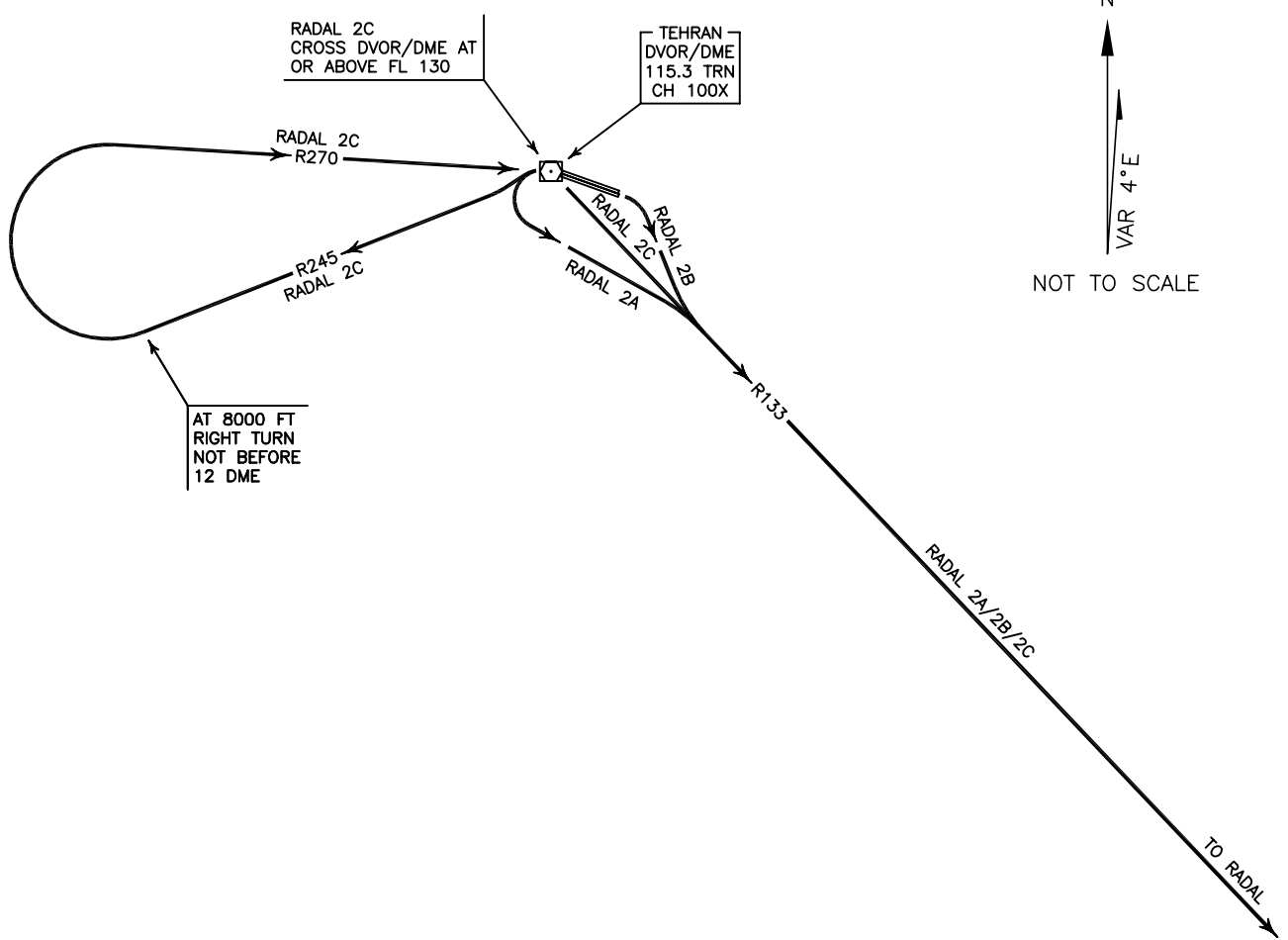
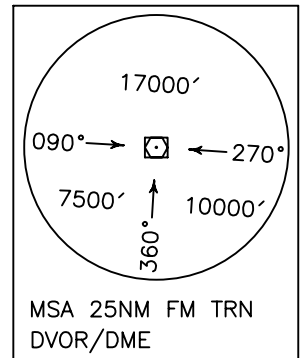
TRANSITION ALTITUDE 9000 FT
TRANSITION LEVEL FL 110

APP	119.700, 125.100
RADAR	119.700, 125.100
TWR	118.100, 124.450
GND	121.700, 121.900
ATIS	128.000

TEHRAN/MEHRABAD
RWY 11L/R, 29L/R
RADAL 2A/2B/2C

ALL DIRECTIONS ARE MAGNETIC.
LEVEL AND ELEVATIONS ARE IN FEET.
DISTANCES ARE IN NAUTICAL MILES.

TMA above FL200 class "A",
at FL 200 and below class "C".
CTR and ATZ class "D".



RADAL 2A DEP:

DEP RWY 29L/R - After take off turn left climb on RDL 133 to RADAL and climb to cleared level.

RADAL 2B DEP:

DEP RWY 11L/R - After take off turn right climb on RDL 133 to RADAL and climb to cleared level.

RADAL 2C DEP:

DEP RWY 29L/R - After take off turn left to intercept RDL 245 to 8000 FT, then turn right (not before 12 DME) to intercept RDL 270 to cross TRN DVOR/DME at or above FL 130, then intercept RDL 133 to RADAL and climb to cleared level.

NOTE: Departure turn limited to 240 KT IAS MAX.

STANDARD DEPARTURE CHART-
INSTRUMENT (SID)-ICAO

TRANSITION ALTITUDE 9000 FT
TRANSITION LEVEL FL 110

APP	119.700, 125.100
RADAR	119.700, 125.100
TWR	118.100, 124.450
GND	121.700, 121.900
ATIS	128.000

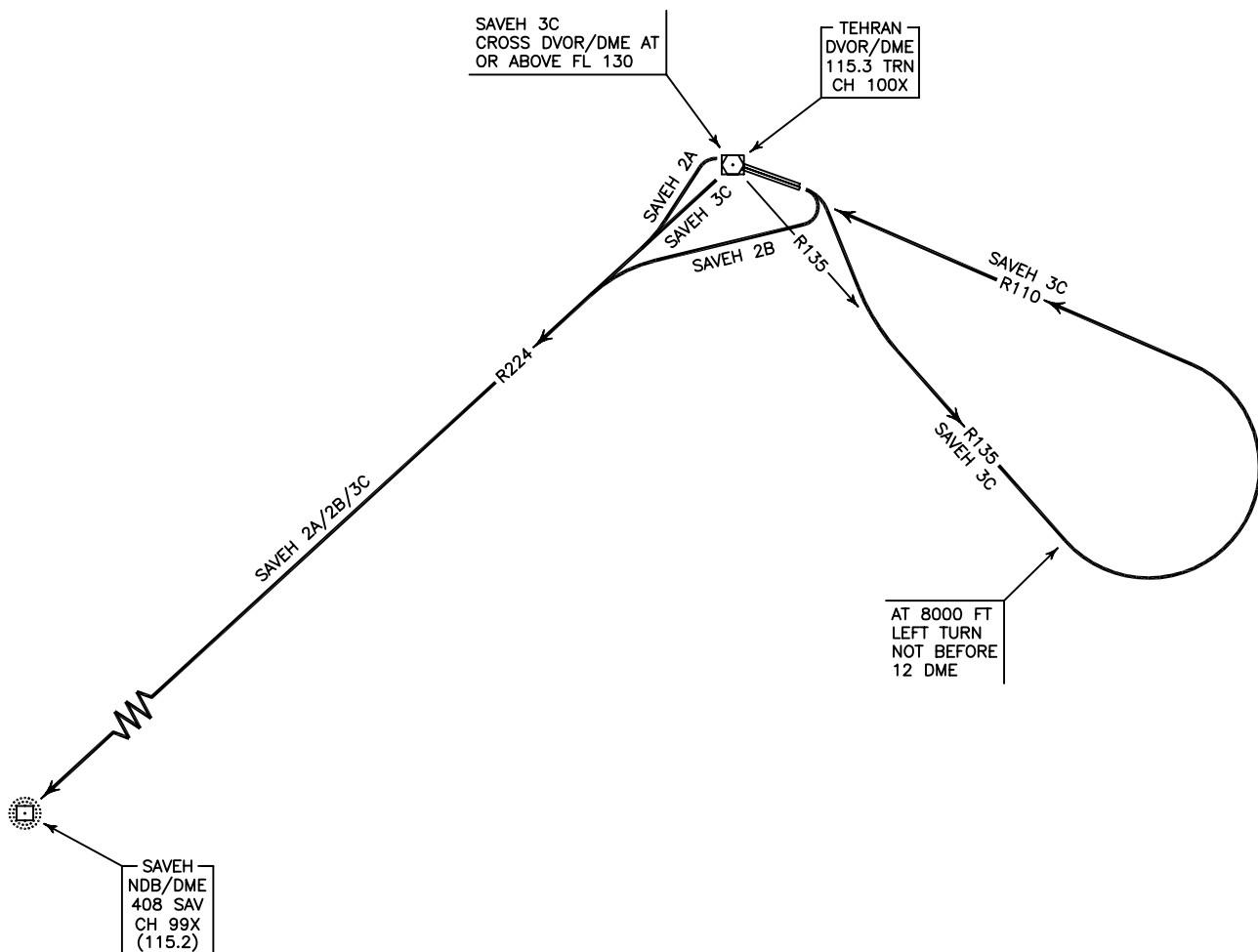
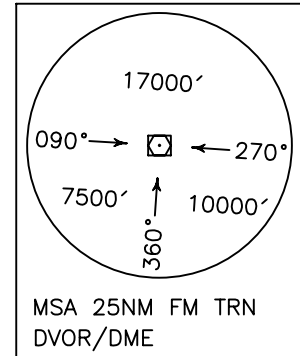
TEHRAN/MEHRABAD
RWY 11L/R, 29L/R
SAVEH 2A/2B/3C

ALL DIRECTIONS ARE MAGNETIC.
LEVEL AND ELEVATIONS ARE IN FEET.
DISTANCES ARE IN NAUTICAL MILES.

TMA above FL200 class "A",
at FL 200 and below class "C".
CTR and ATZ class "D".



NOT TO SCALE



SAVEH 2A DEP:

DEP RWY 29L/R - After take off turn left climb on RDL 224 to SAV NDB/DME and climb to cleared level.

SAVEH 2B DEP:

DEP RWY 11L/R - After take off turn right climb on RDL 224 to SAV NDB/DME and climb to cleared level.

SAVEH 3C DEP:

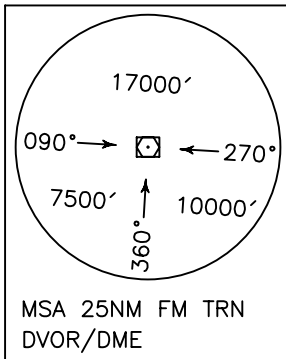
DEP RWY 11L/R - After take off turn right to intercept RDL 135 to 8000 FT, then turn left (not before 12 DME) to intercept RDL 110 to cross TRN DVOR/DME at or above FL 130, then intercept RDL 224 to SAV NDB/DME and climb to cleared level.

NOTE: Departure turn limited to 240 KT IAS MAX.

STANDARD DEPARTURE CHART-
INSTRUMENT (SID)-ICAO

TRANSITION ALTITUDE 9000 FT	APP 119.700, 125.100 RADAR 119.700, 125.100 TWR 118.100, 124.450 GND 121.700, 121.900 ATIS 128.000
TRANSITION LEVEL FL 110	

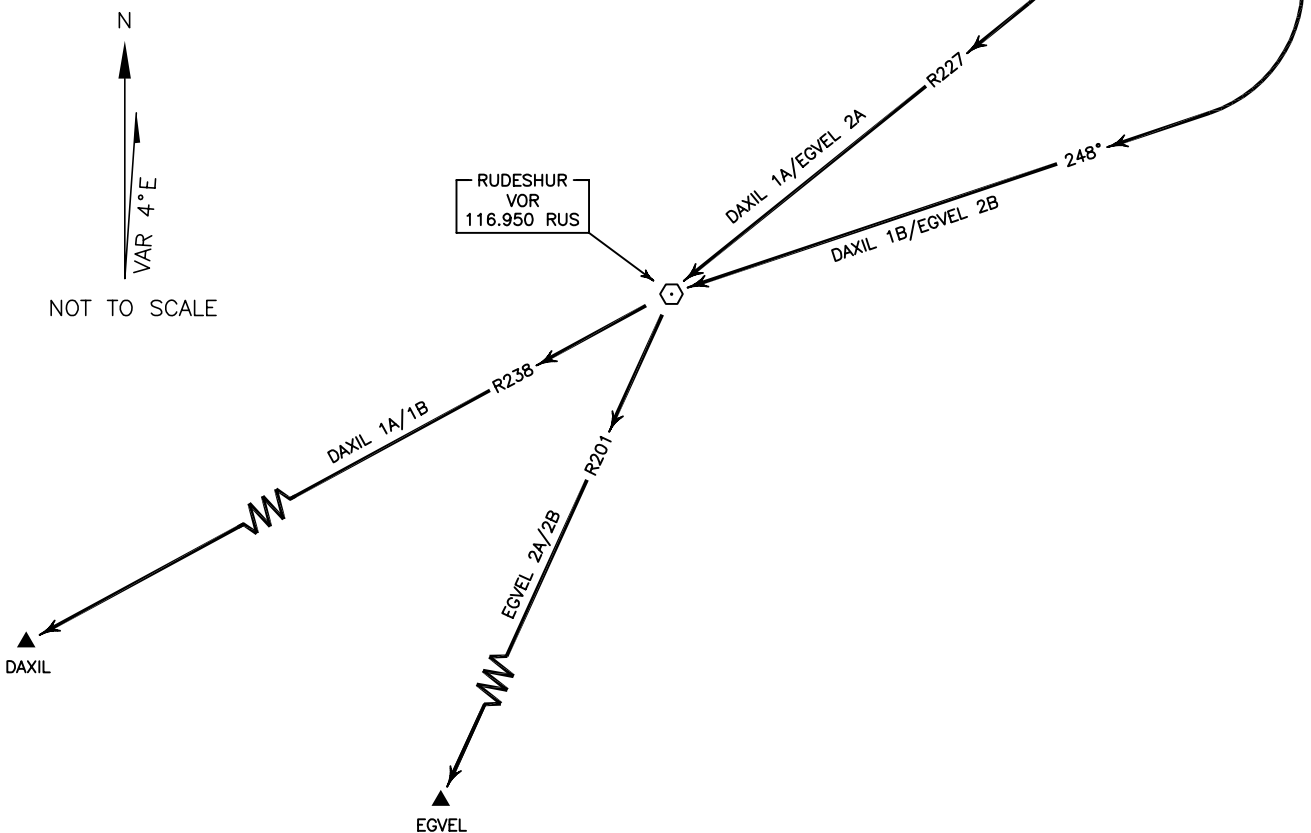
TEHRAN/MEHRABAD
RWY 11L/R, 29L/R
DAXIL 1A/1B
EGVEL 2A/2B



ALL DIRECTIONS ARE MAGNETIC.
LEVEL AND ELEVATIONS ARE IN FEET.
DISTANCES ARE IN NAUTICAL MILES.

TMA above FL200 class "A",
at FL 200 and below class "C".
CTR and ATZ class "D".

TEHRAN
DVOR/DME
115.3 TRN
CH 100X



DAXIL 1A DEP:

DEP RWY 29L/R - After take off turn left climb on RDL 227 to RUS VOR, after passing RUS VOR proceed on RDL 238 FM RUS VOR to DAXIL and climb to cleared level.

DAXIL 1B DEP:

DEP RWY 11L/R - After take off turn right climb on TR 248° MAG to RUS VOR, after passing RUS VOR proceed on RDL 238 FM RUS to DAXIL and climb to cleared level.

EGVEL 2A DEP:

DEP RWY 29L/R - After take off turn left climb on RDL 227 to RUS VOR, after passing RUS VOR turn left climb on RDL 201 to EGVEL and climb to cleared level.

EGVEL 2B DEP:

DEP RWY 11L/R - After take off turn right climb on TR 248° MAG to RUS VOR, after passing RUS VOR turn left climb on RDL 201 to EGVEL and climb to cleared level.

STANDARD ARRIVAL CHART-
INSTRUMENT (STAR)-ICAO

TRANSITION ALTITUDE 9000 FT
TRANSITION LEVEL FL 110

APP	119.700, 125.100
RADAR	119.700, 125.100
TWR	118.100, 124.450
GND	121.700, 121.900
ATIS	128.000

TEHRAN/MEHRABAD
RWY 11L/R, 29L/R
SAVEH 2A/1B
RUDESHUR 2A/4B
PAVET 1A/3B, MIVAK 2A/1B

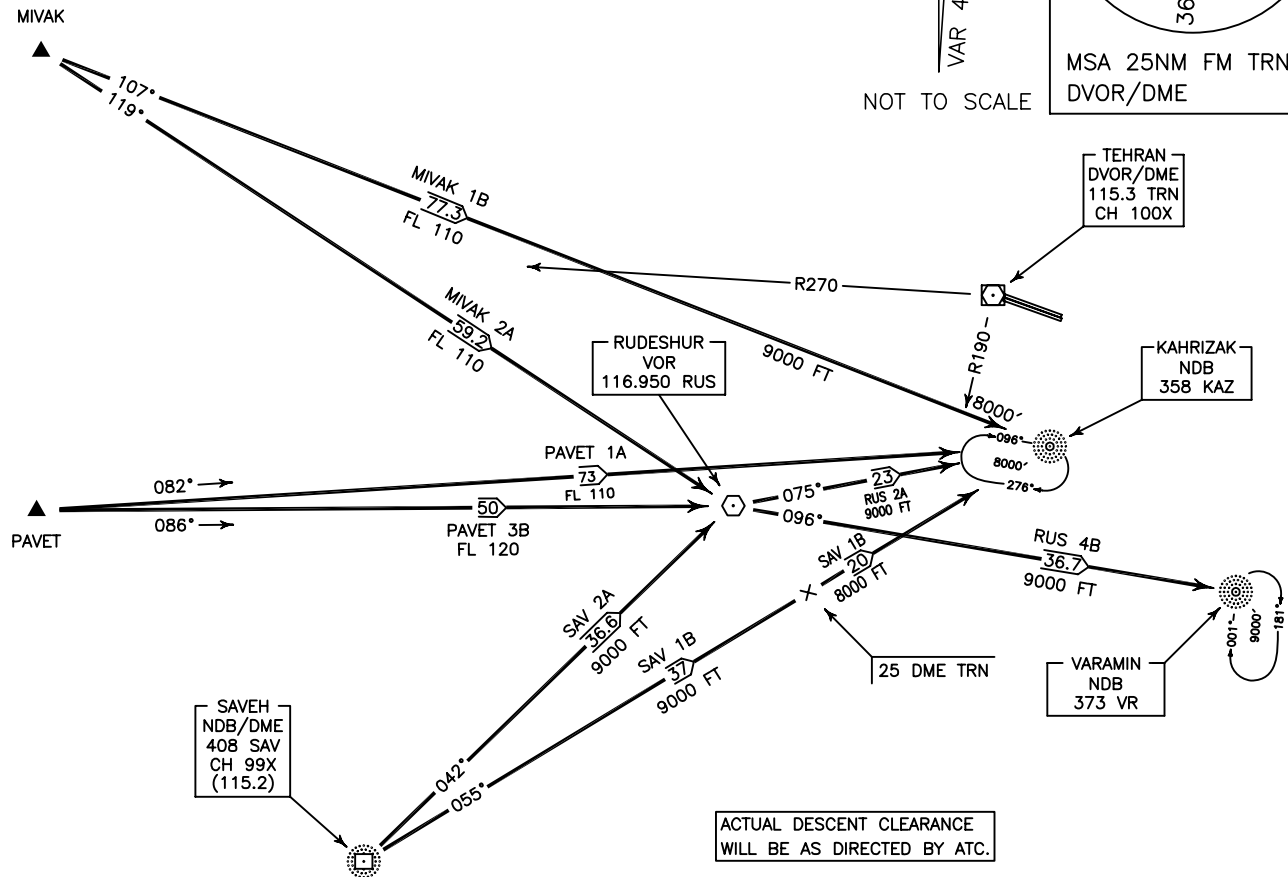
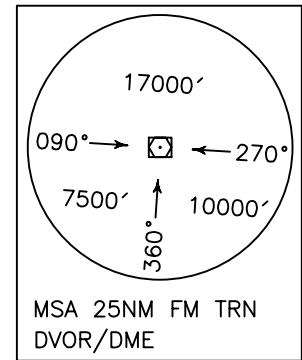
ALL DIRECTIONS ARE MAGNETIC,
LEVEL AND ELEVATIONS ARE IN FEET,
DISTANCES ARE IN NAUTICAL MILES.

TMA above FL200 class "A",
at FL 200 and below class "C".
CTR and ATZ class "D".

SPEED RESTRICTION
Within TMA: MAX 270 KT IAS
Within CTR: MAX 230 KT IAS



NOT TO SCALE



SAVEH 2A ARR:

FM SAV NDB/DME proceed to RUS VOR, MAG TR 042°, DIST 36.6 NM, MNM level 9000 FT.

SAVEH 1B ARR:

FM SAV NDB/DME proceed to KAZ NDB, MAG TR 055°, DIST 57 NM, MNM level up to 25 DME FM TRN DVOR/DME 9000 FT, then 8000 FT.

RUDESHUR 2A ARR:

FM RUS VOR proceed to KAZ NDB, MAG TR 075°, DIST 23 NM, MNM level 9000 FT.

RUDESHUR 4B ARR:

FM RUS VOR proceed to VR NDB, MAG TR 096°, DIST 36.7 NM, MNM level 9000 FT.

PAVET 1A ARR:

FM PAVET proceed to KAZ NDB, MAG TR 082°, DIST 73 NM, MNM FL 110.

PAVET 3B ARR:

FM PAVET proceed to RUS VOR, MAG TR 086°, DIST 50 NM, MNM FL 120.

MIVAK 2A ARR:

FM MIVAK proceed to RUS VOR, MAG TR 119°, DIST 59.2 NM, MNM FL 110.

MIVAK 1B ARR:

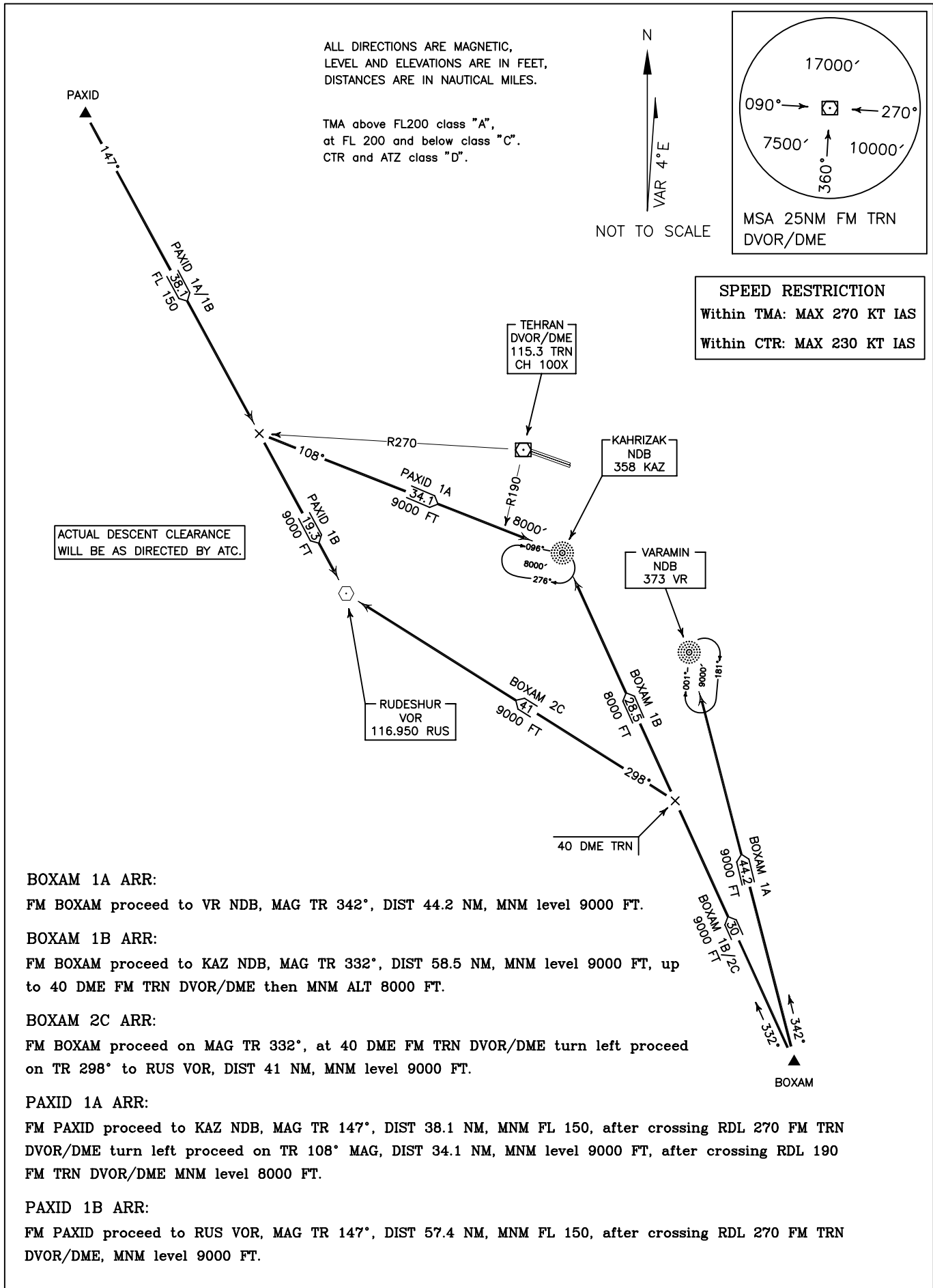
FM MIVAK proceed to KAZ NDB, MAG TR 107°, DIST 77.3 NM, MNM FL 110, after crossing RDL 270
FM TRN DVOR/DME MNM level 9000 FT, after crossing RDL 190 FM TRN DVOR/DME MNM level 8000 FT.

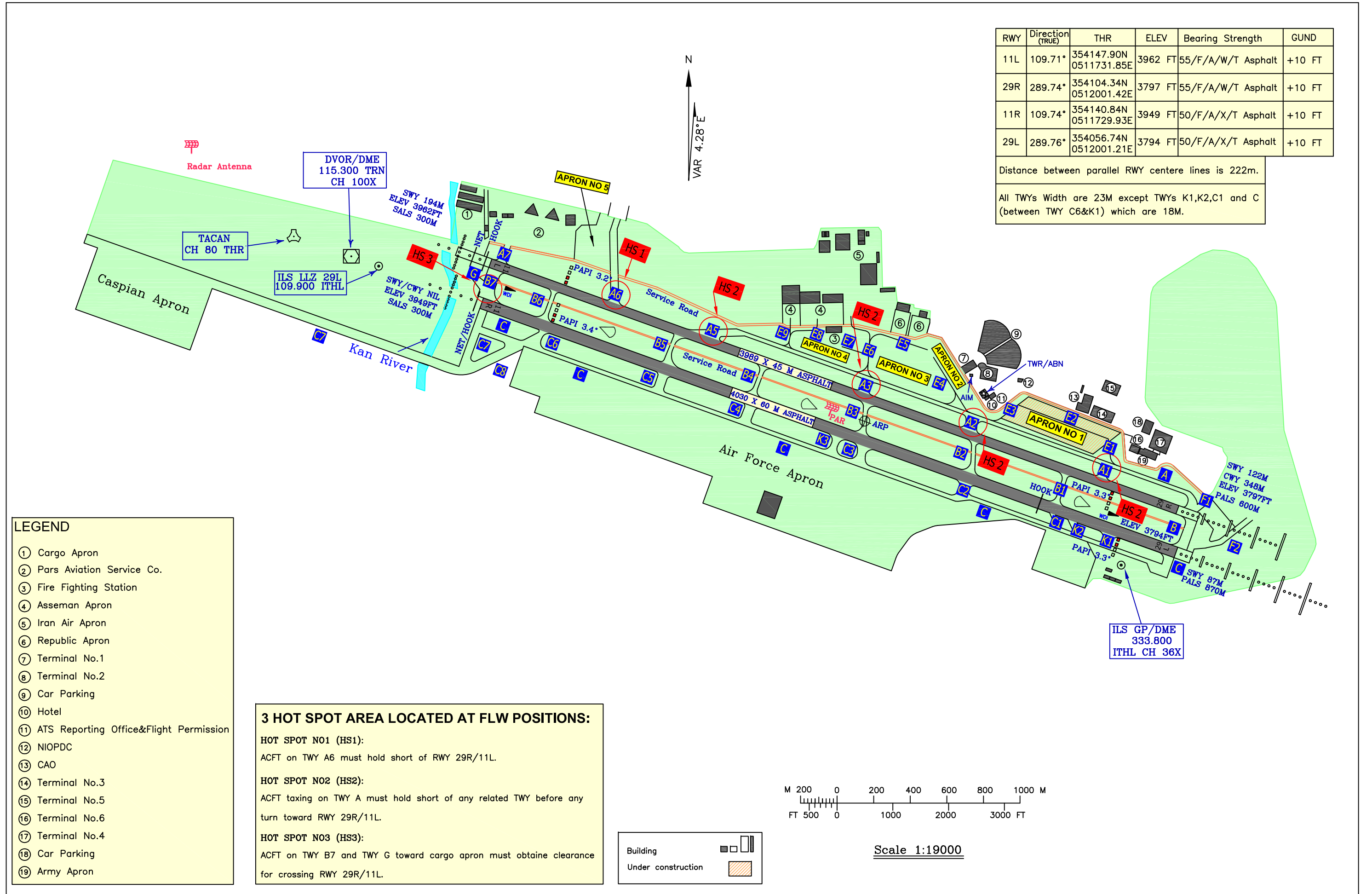
STANDARD ARRIVAL CHART-
INSTRUMENT (STAR)-ICAO

TRANSITION ALTITUDE 9000 FT
TRANSITION LEVEL FL 110

APP	119.700, 125.100
RADAR	119.700, 125.100
TWR	118.100, 124.450
GND	121.700, 121.900
ATIS	128.000

TEHRAN/MEHRABAD
RWY 11L/R, 29L/R
BOXAM 1A/1B/2C
PAXID 1A/1B





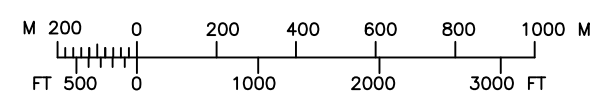
- LEGEND**
- ① Cargo Apron
 - ② Pars Aviation Service Co.
 - ③ Fire Fighting Station
 - ④ Asseman Apron
 - ⑤ Iran Air Apron
 - ⑥ Republic Apron
 - ⑦ Terminal No.1
 - ⑧ Terminal No.2
 - ⑨ Car Parking
 - ⑩ Hotel
 - ⑪ ATS Reporting Office&Flight Permission
 - ⑫ NIOPDC
 - ⑬ CAO
 - ⑭ Terminal No.3
 - ⑮ Terminal No.5
 - ⑯ Terminal No.6
 - ⑰ Terminal No.4
 - ⑱ Car Parking
 - ⑲ Army Apron

3 HOT SPOT AREA LOCATED AT FLW POSITIONS:

HOT SPOT NO1 (HS1):
ACFT on TWY A6 must hold short of RWY 29R/11L.

HOT SPOT NO2 (HS2):
ACFT taxiing on TWY A must hold short of any related TWY before any turn toward RWY 29R/11L.

HOT SPOT NO3 (HS3):
ACFT on TWY B7 and TWY G toward cargo apron must obtain clearance for crossing RWY 29R/11L.



Scale 1:19000