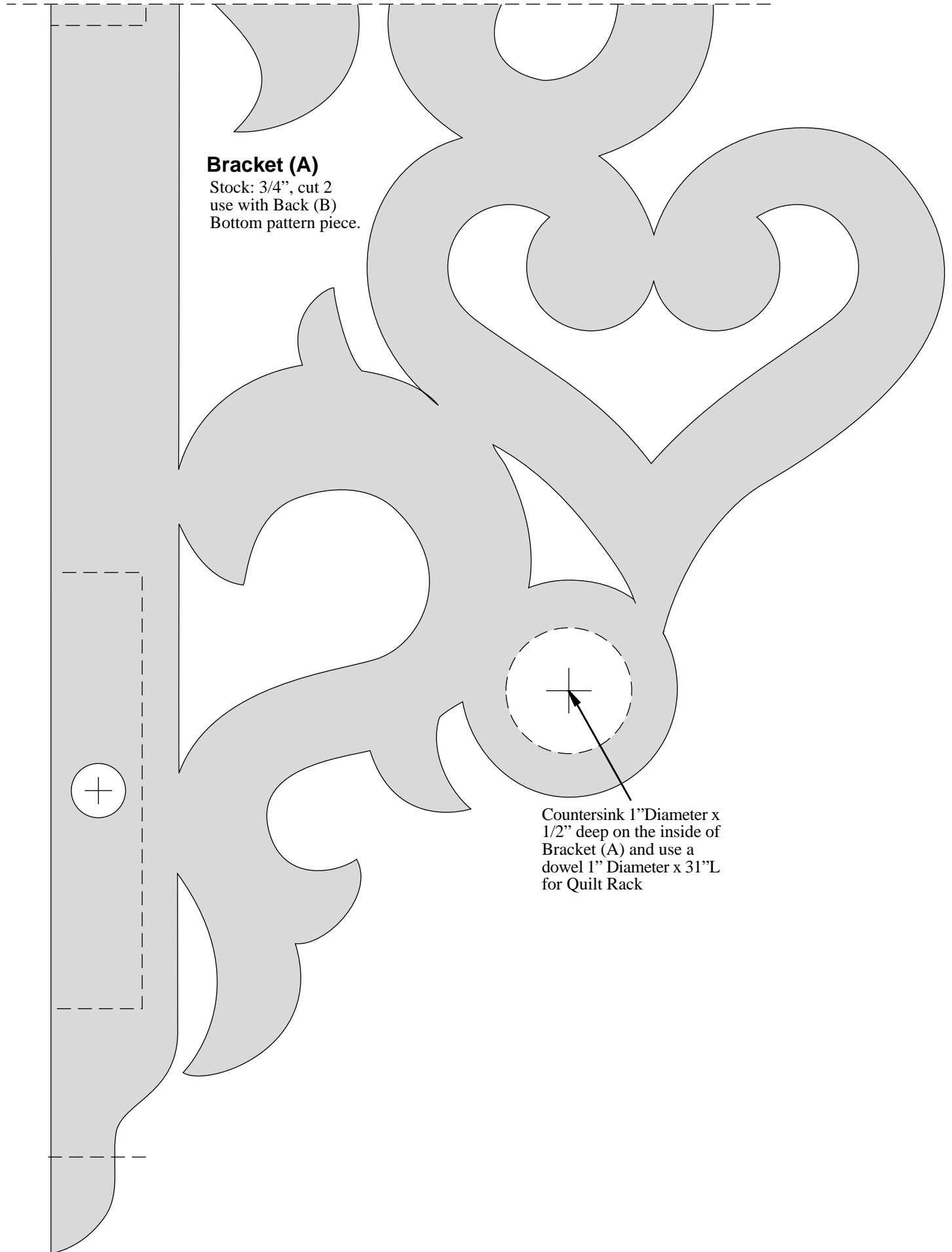


www.ichoob.ir

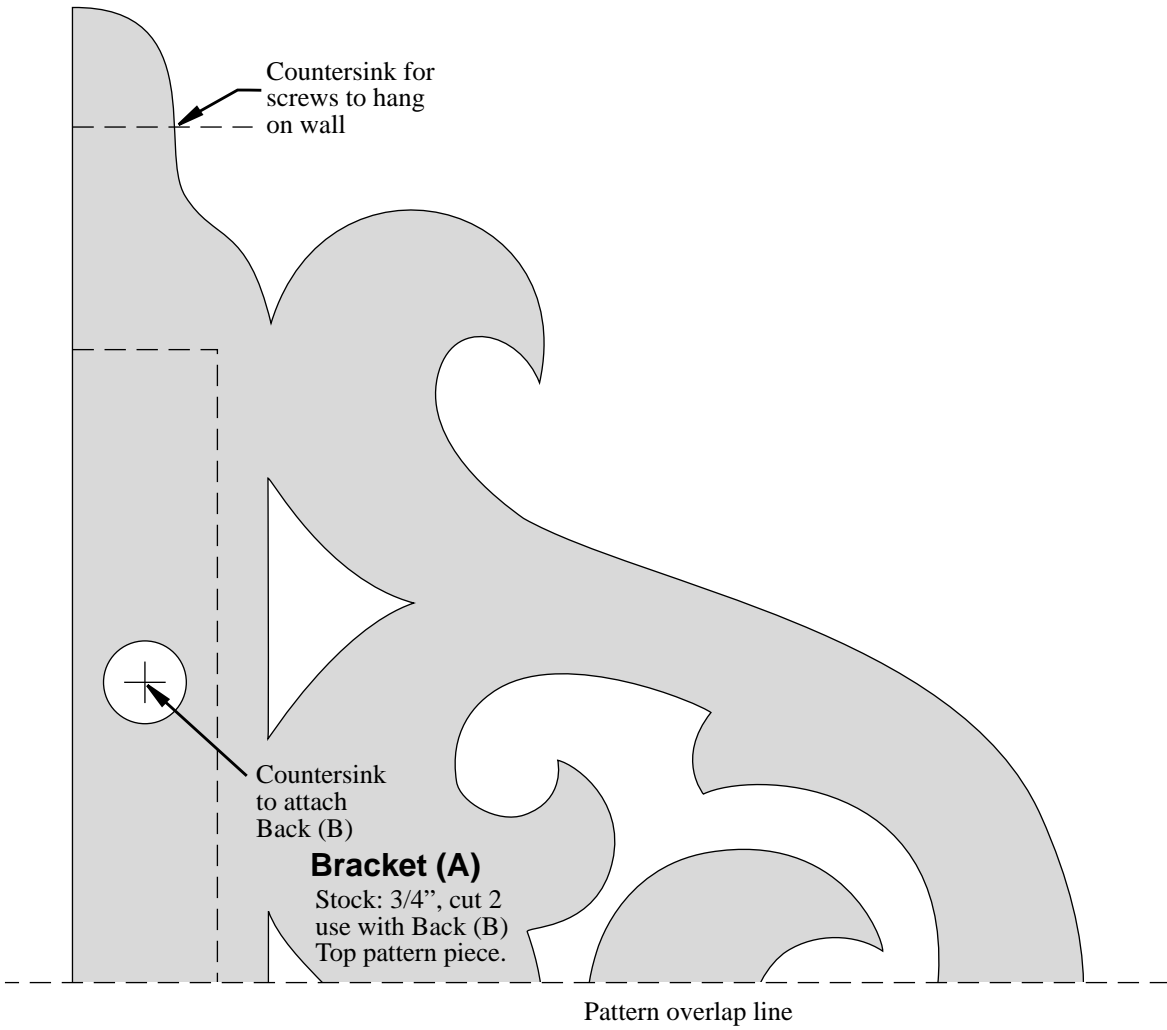
Pattern overlap line

Bracket (A)

Stock: 3/4", cut 2
use with Back (B)
Bottom pattern piece.



Countersink 1"Diameter x
1/2" deep on the inside of
Bracket (A) and use a
dowel 1" Diameter x 31"L
for Quilt Rack



Back (B)

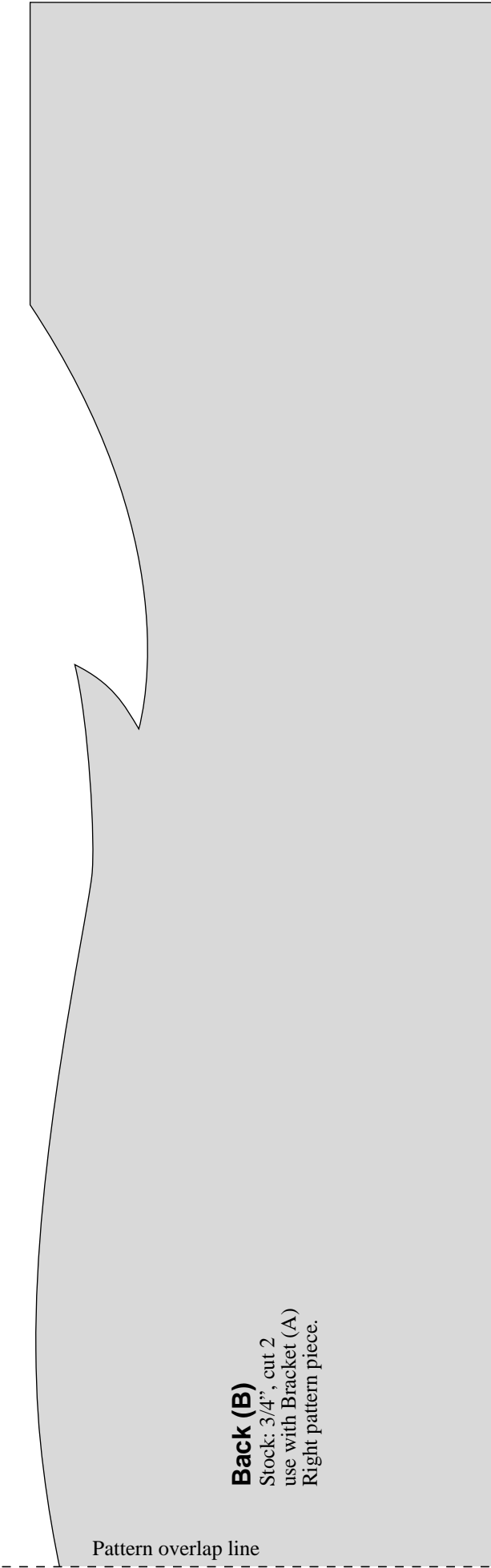
Stock: 3/4", cut 2
use with Bracket (A)
Left pattern piece.

Pattern overlap line

Back (B)

Stock: 3/4", cut 2
use with Bracket (A)
Middle pattern piece.

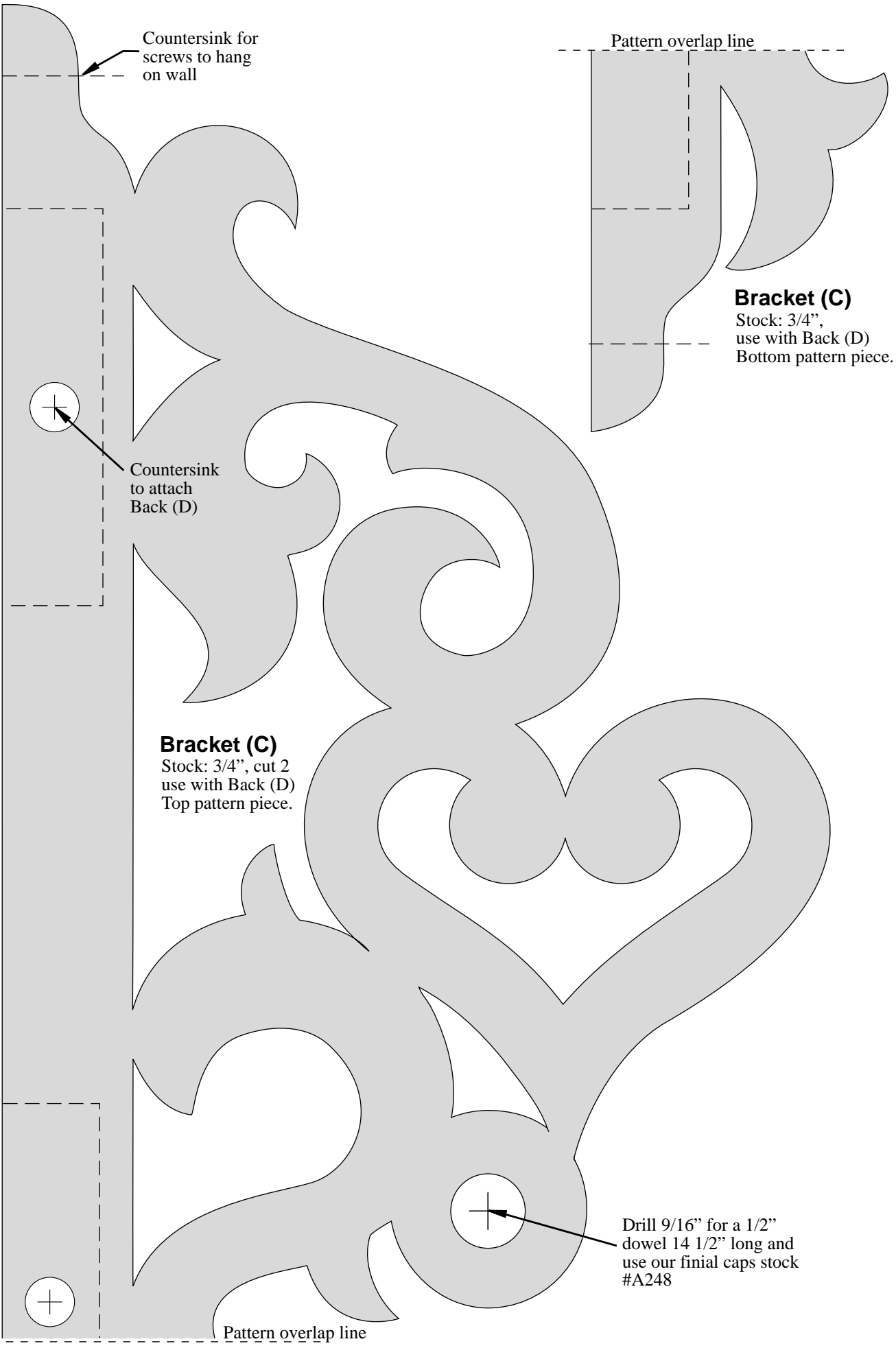
Pattern overlap line



Back (B)

Stock: 3/4", cut 2
use with Bracket (A)
Right pattern piece.

Pattern overlap line



Countersink for screws to hang on wall

Pattern overlap line

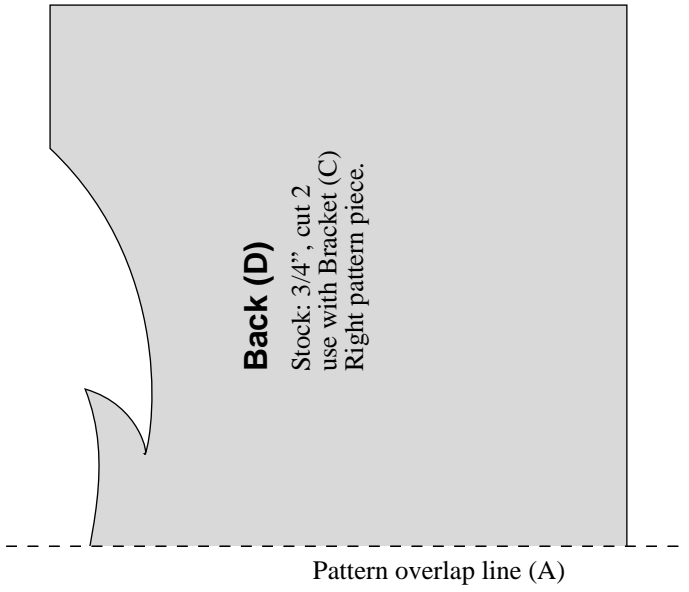
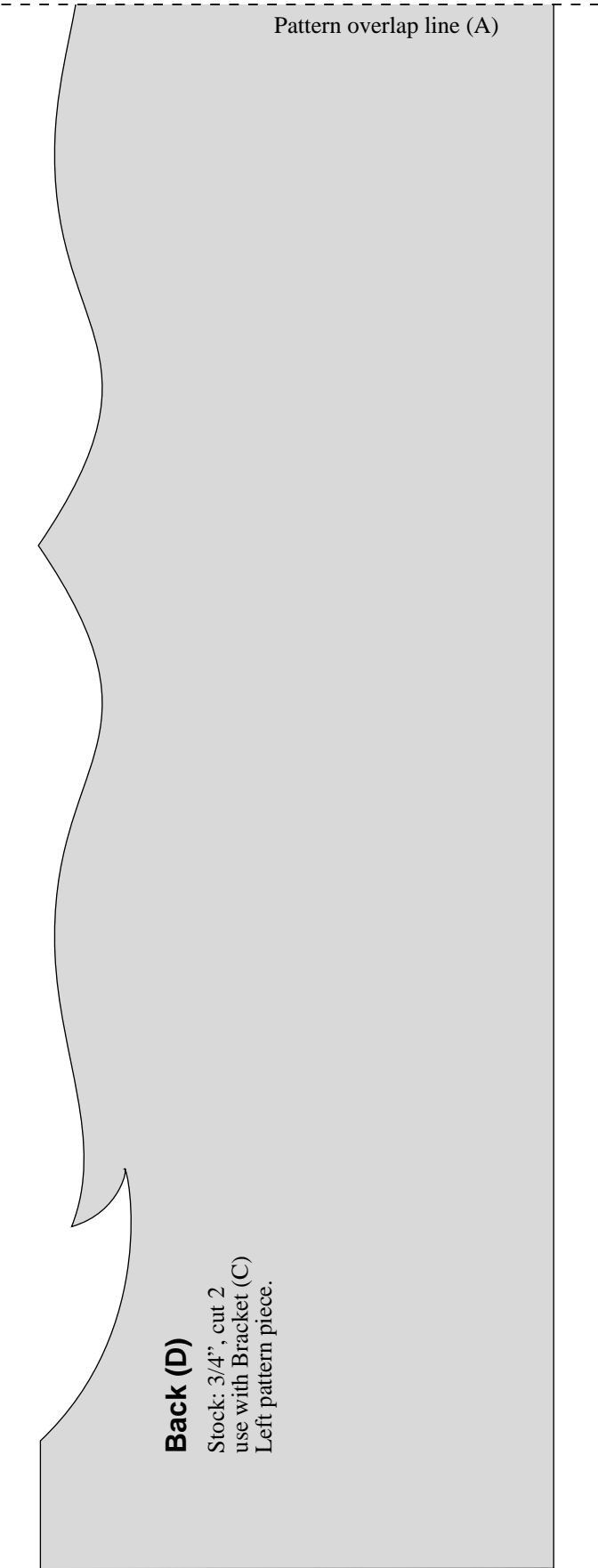
Bracket (C)
Stock: 3/4",
use with Back (D)
Bottom pattern piece.

Countersink to attach Back (D)

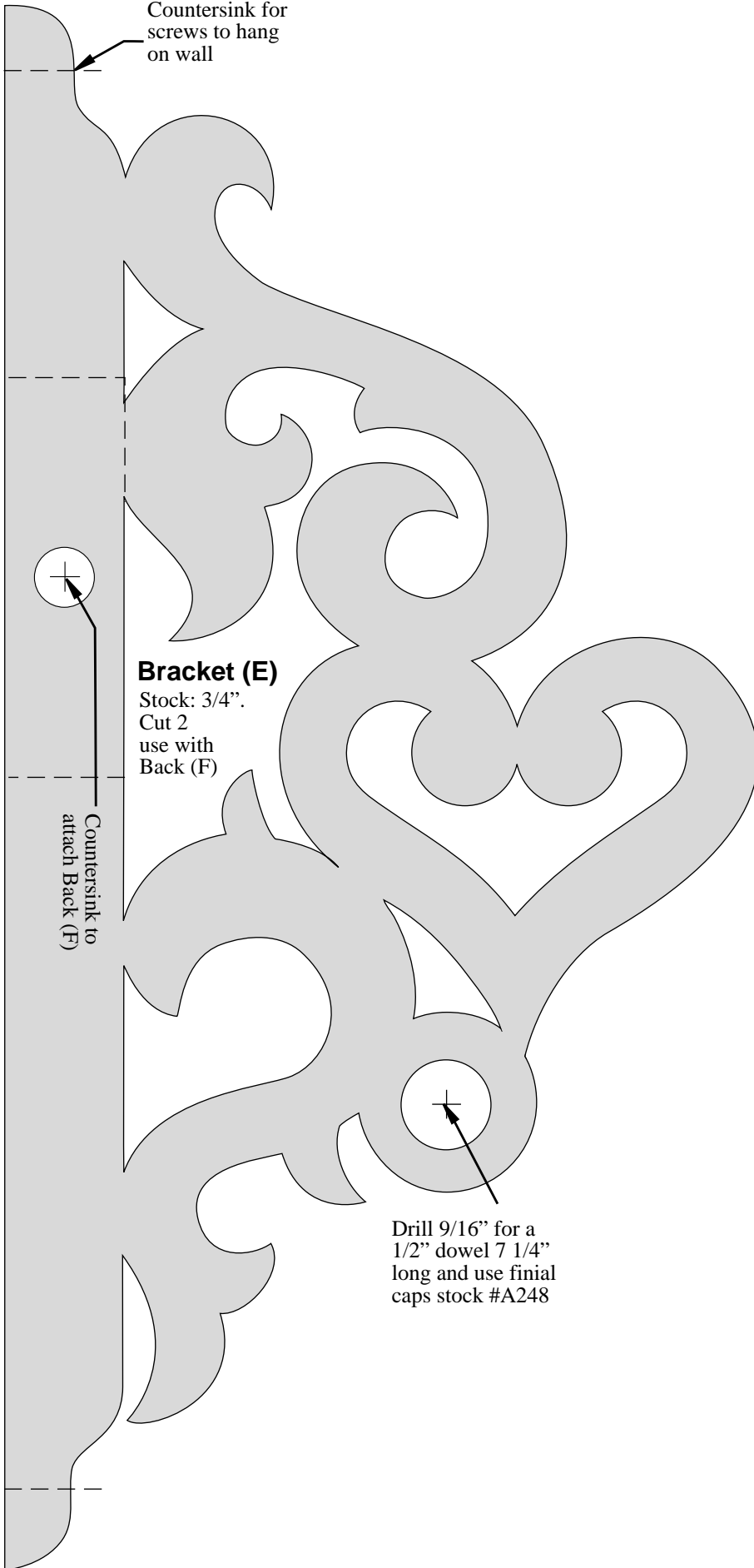
Bracket (C)
Stock: 3/4", cut 2
use with Back (D)
Top pattern piece.

Drill 9/16" for a 1/2" dowel 14 1/2" long and use our finial caps stock #A248

Pattern overlap line



Countersink for
screws to hang
on wall

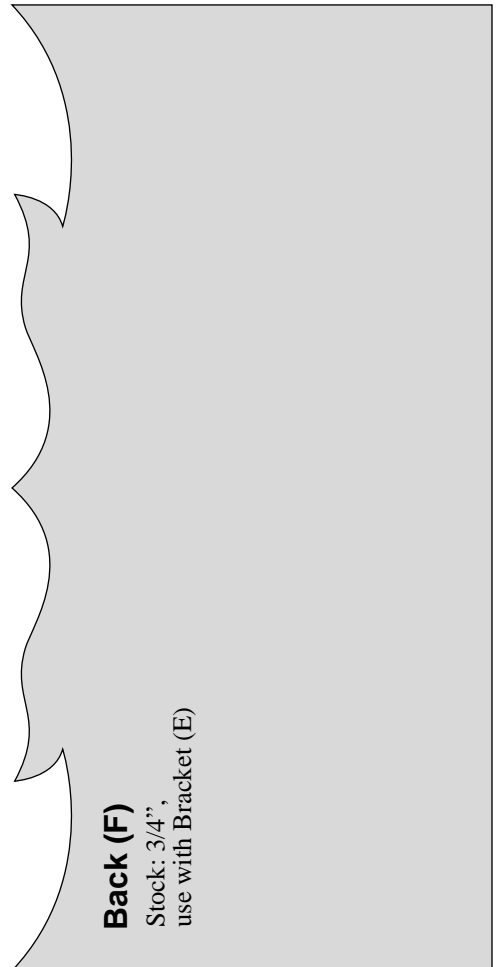


Bracket (E)

Stock: 3/4".
Cut 2
use with
Back (F)

Countersink to
attach Back (F)

Drill 9/16" for a
1/2" dowel 7 1/4"
long and use finial
caps stock #A248



Back (F)

Stock: 3/4",
use with Bracket (E)