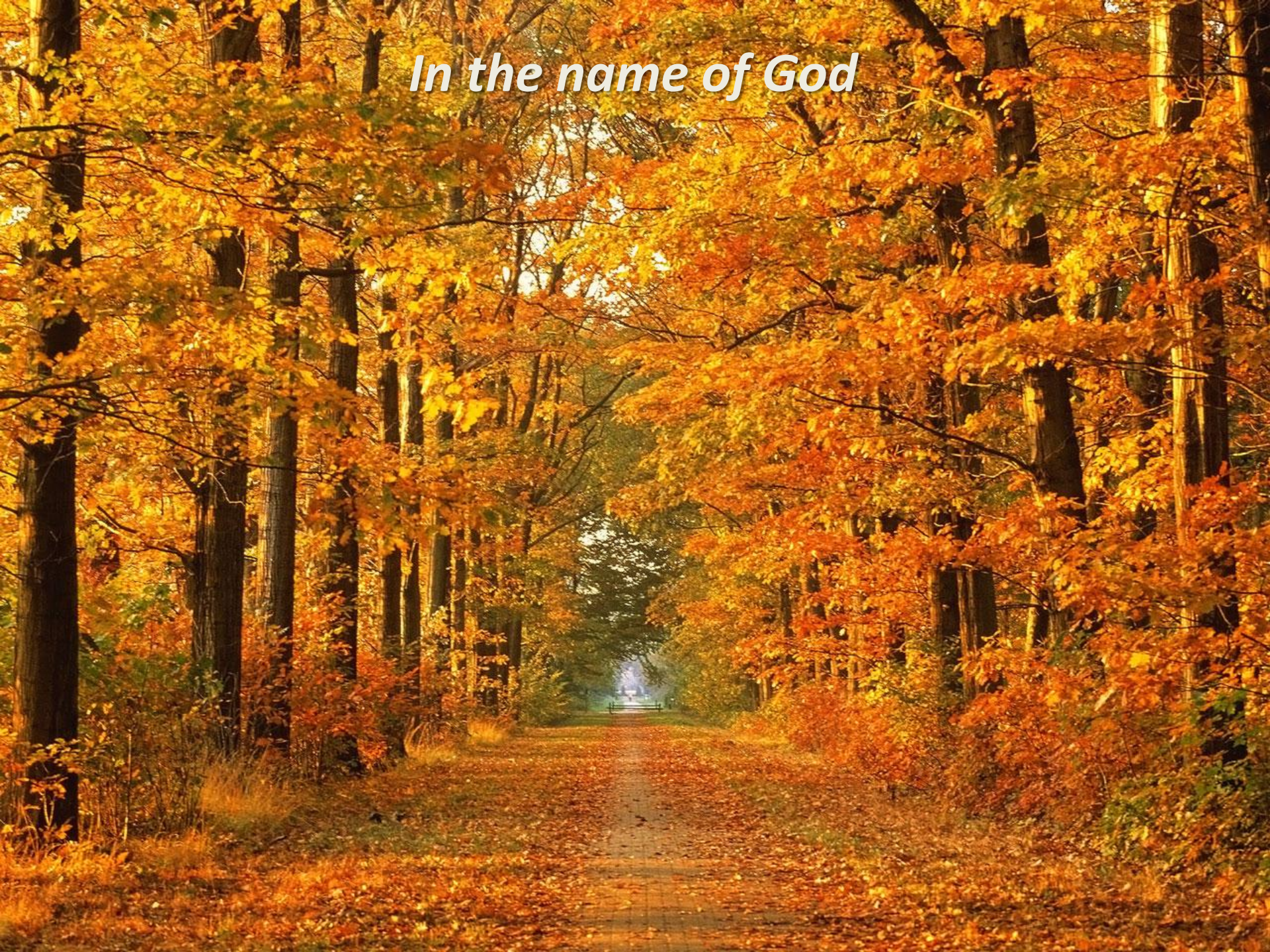


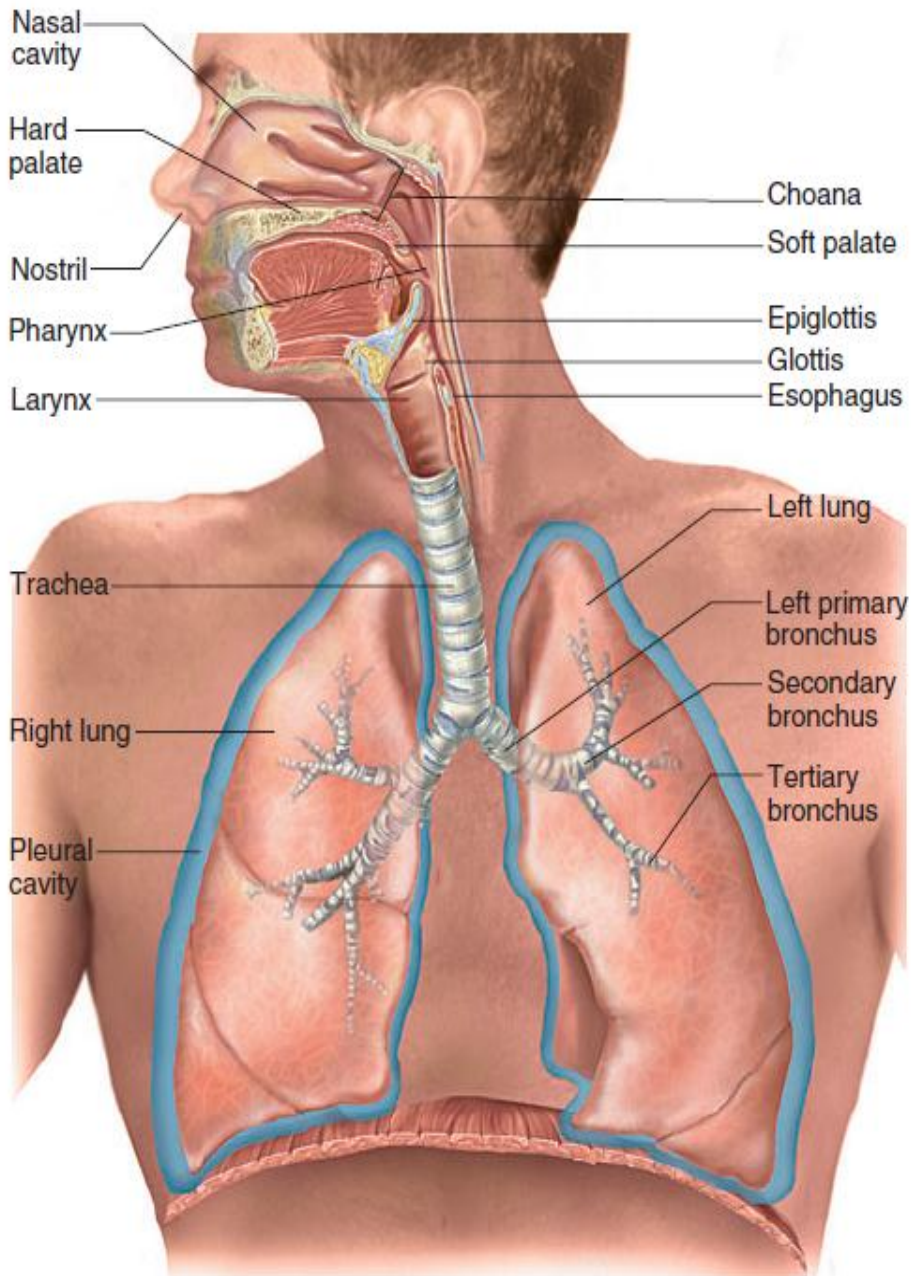
In the name of God



The Respiratory System

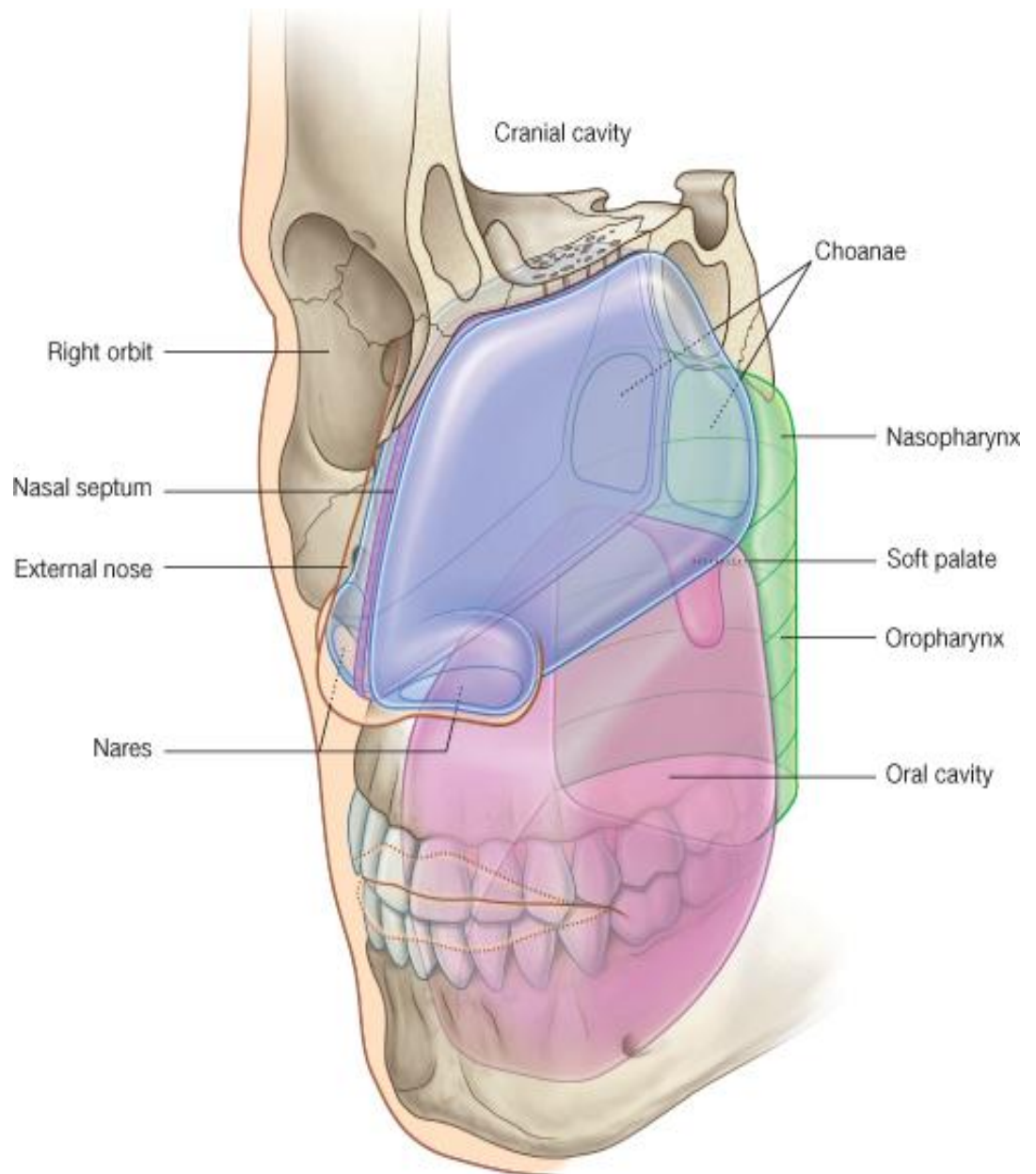
- Airways:*** *Nasal cavities*
- Pharynx*
- Larynx*
- Trachea*
- Bronchus*

Lungs



Nasal cavities

- ***Roof***
- ***Floor***
- ***Lateral wall***
- ***Medial wall (septum)***
- ***Nares***
- ***Choanae***



✓ **Roof**

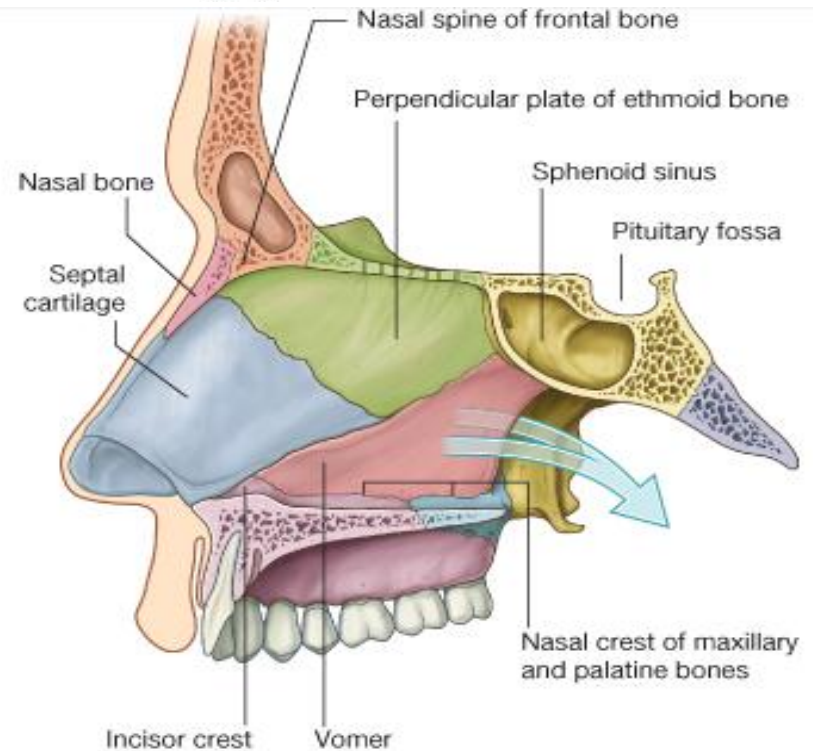
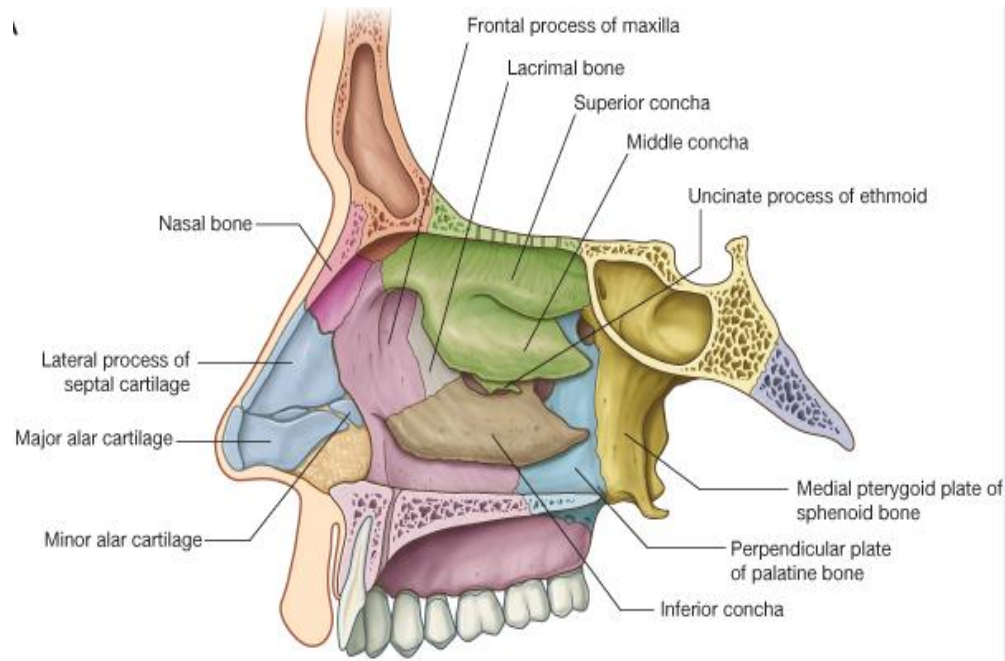
✓ **Floor**

✓ **Lateral wall**

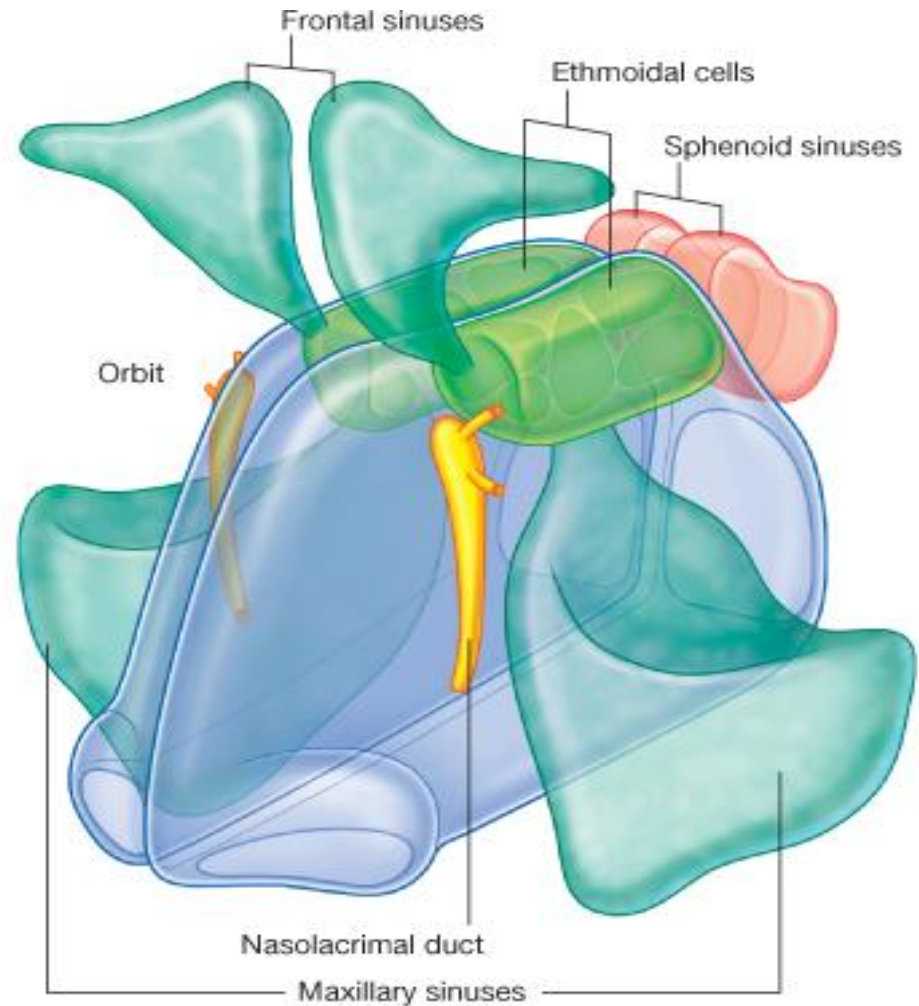
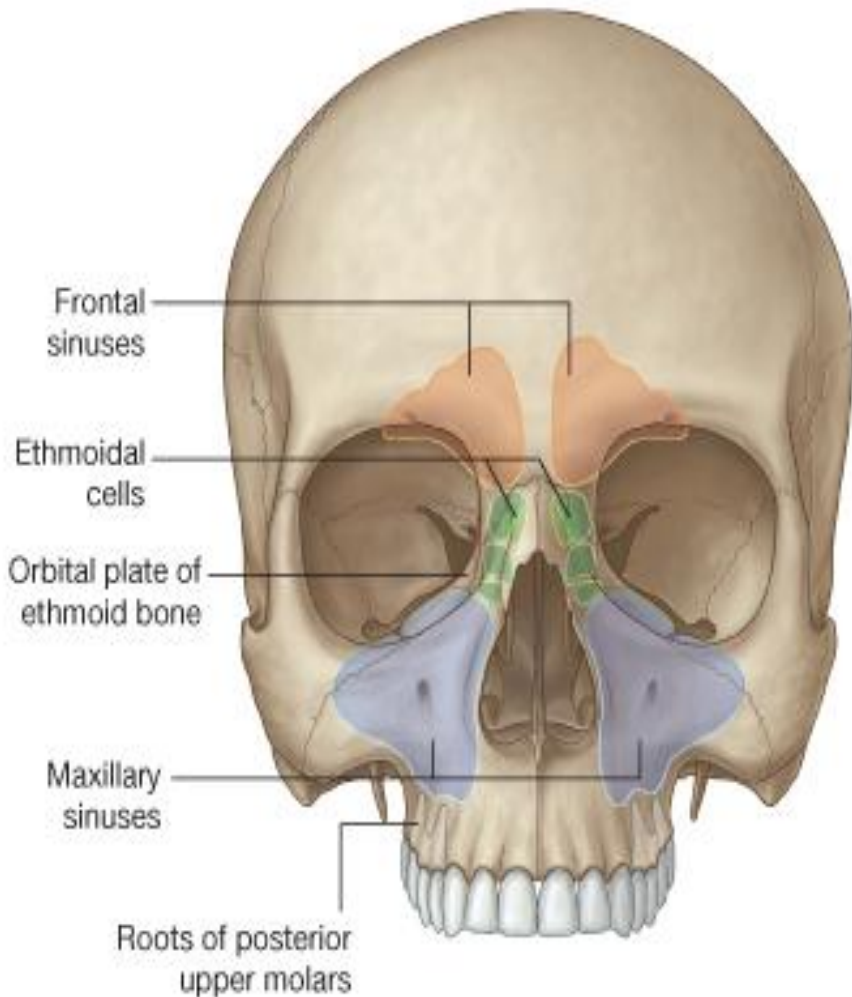
✓ **Medial wall (septum)**

✓ **Nares**

✓ **Choanae**



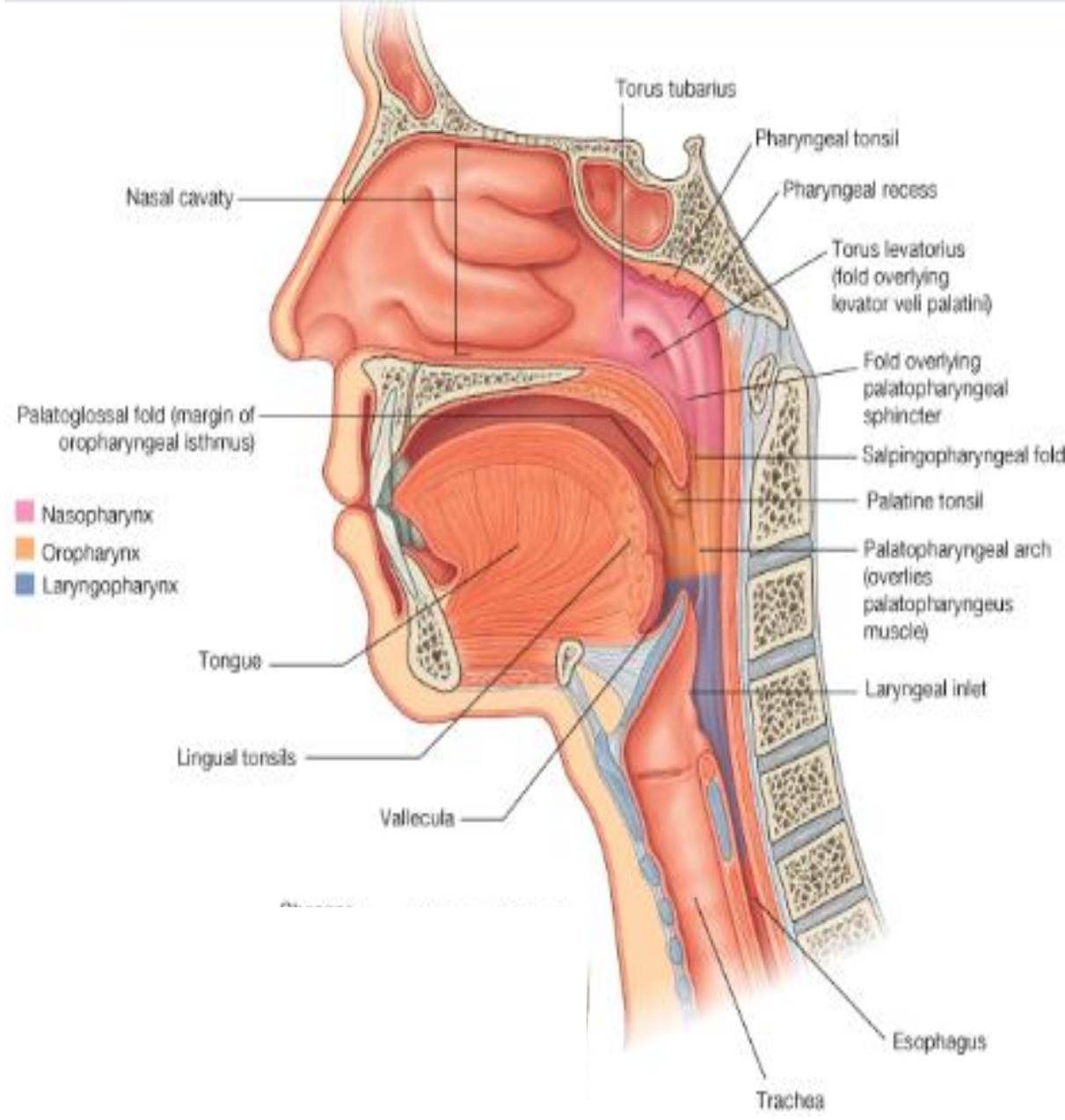
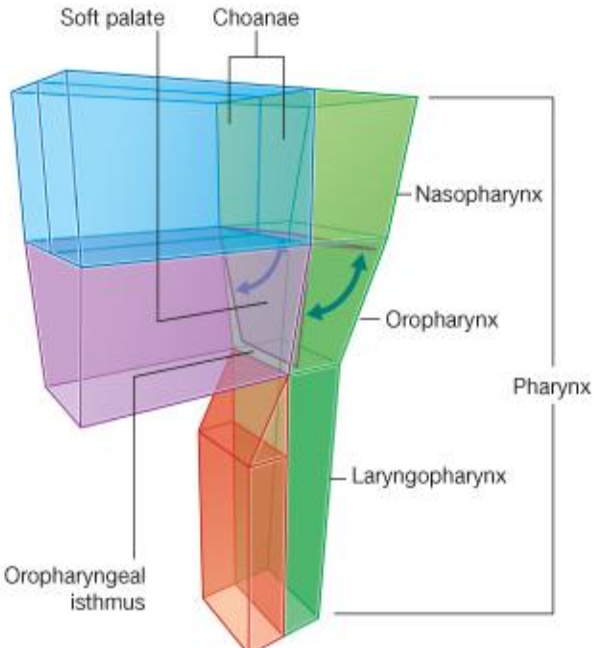
Sinuses



Pharynx

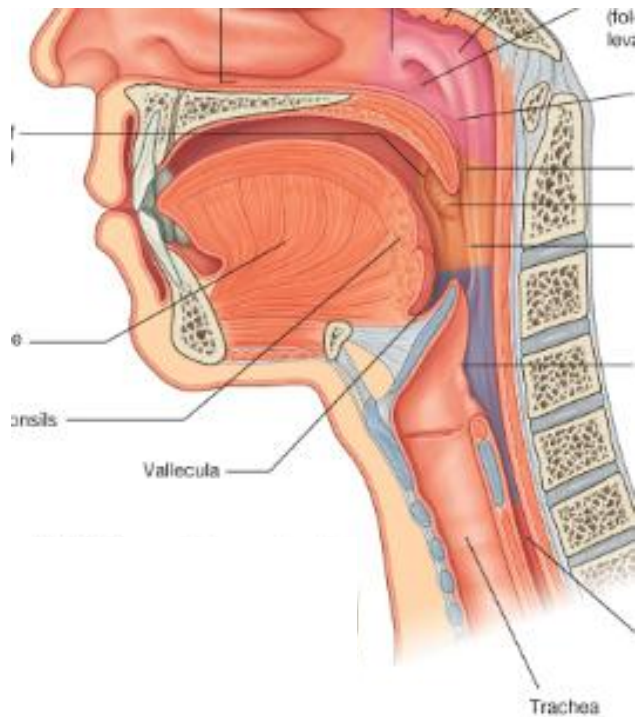
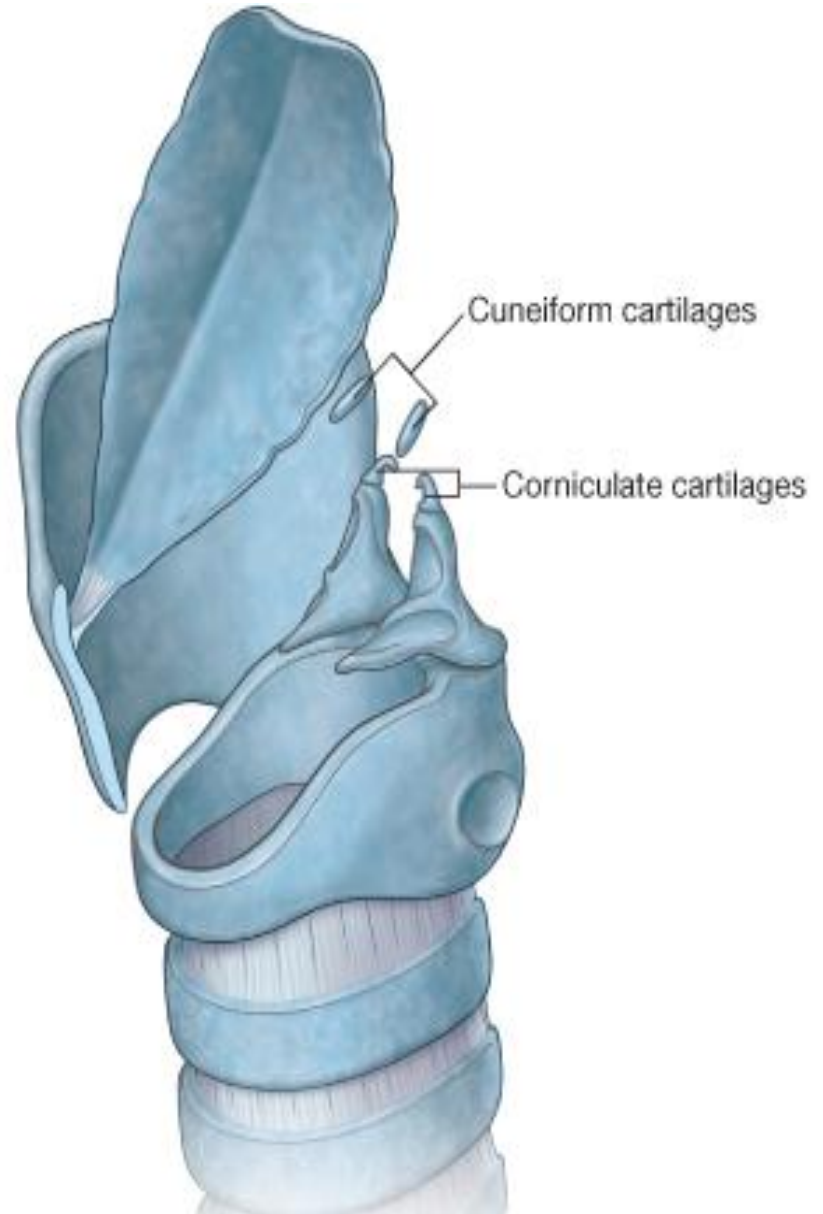
- ✓ **Nasopharynx**
- ✓ **Oropharynx**
- ✓ **Laryngopharynx**

- **Pharyngeal tonsil**
- **Palatine tonsil**

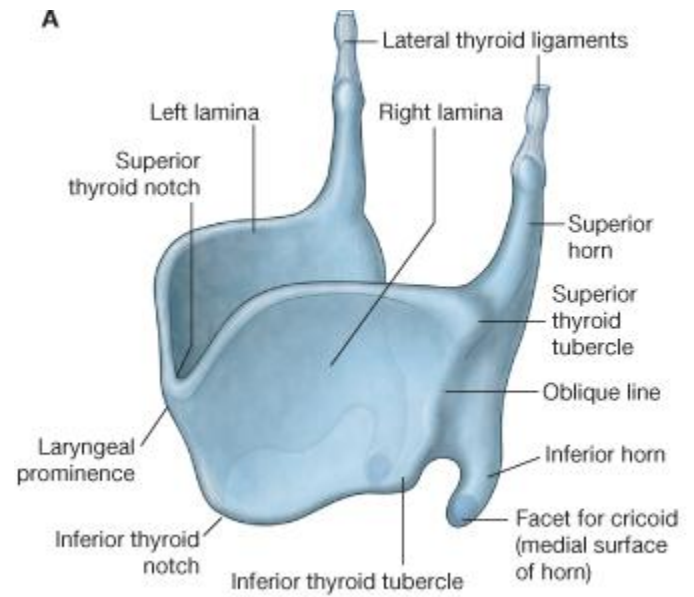
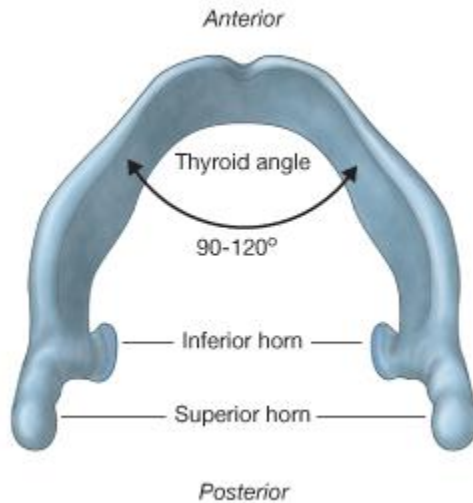
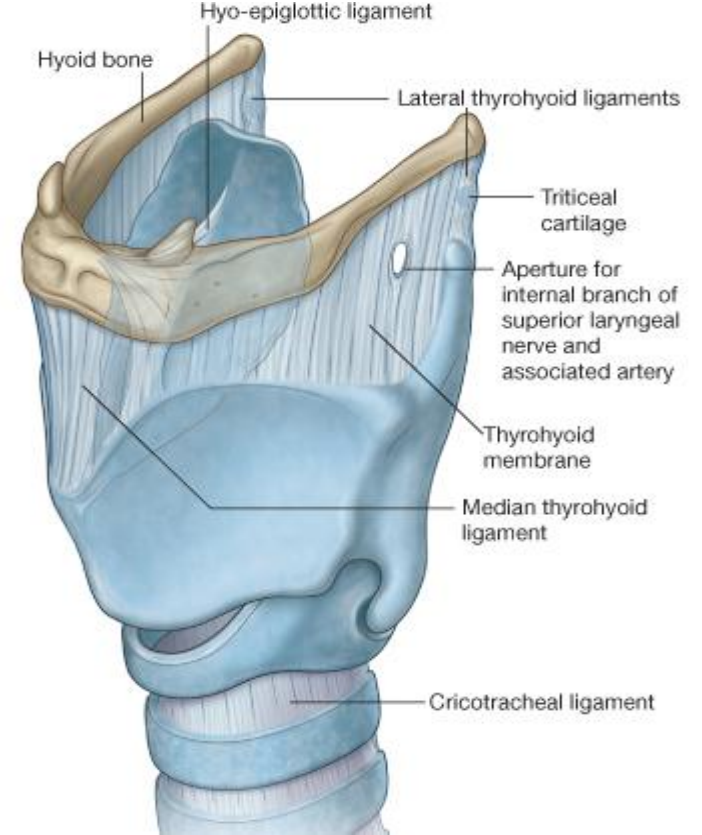


Larynx

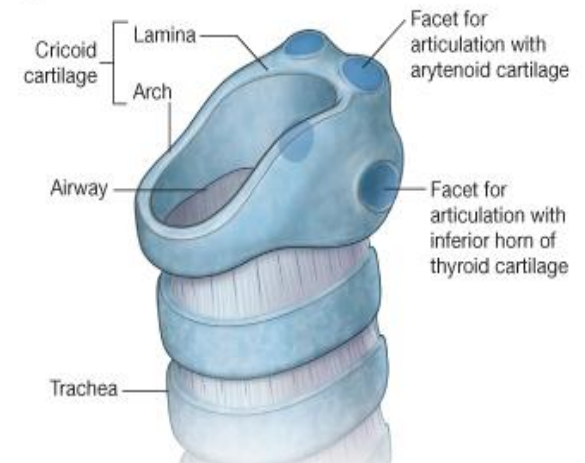
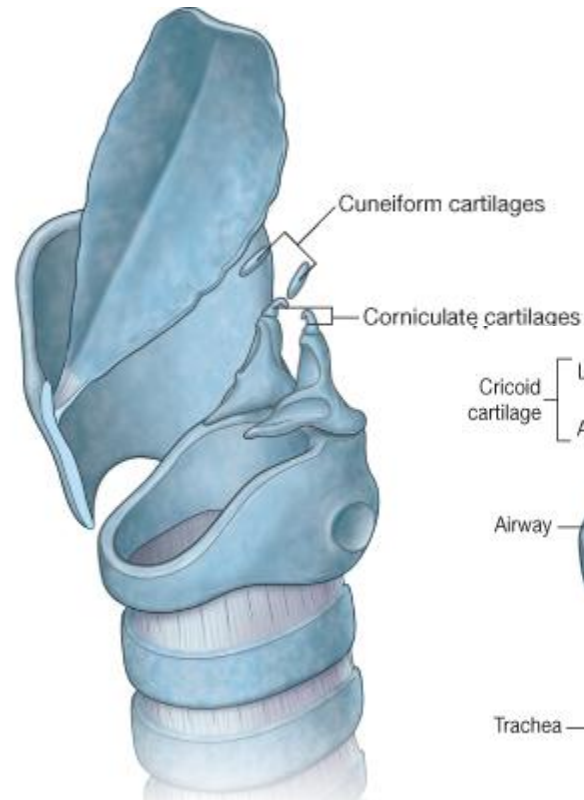
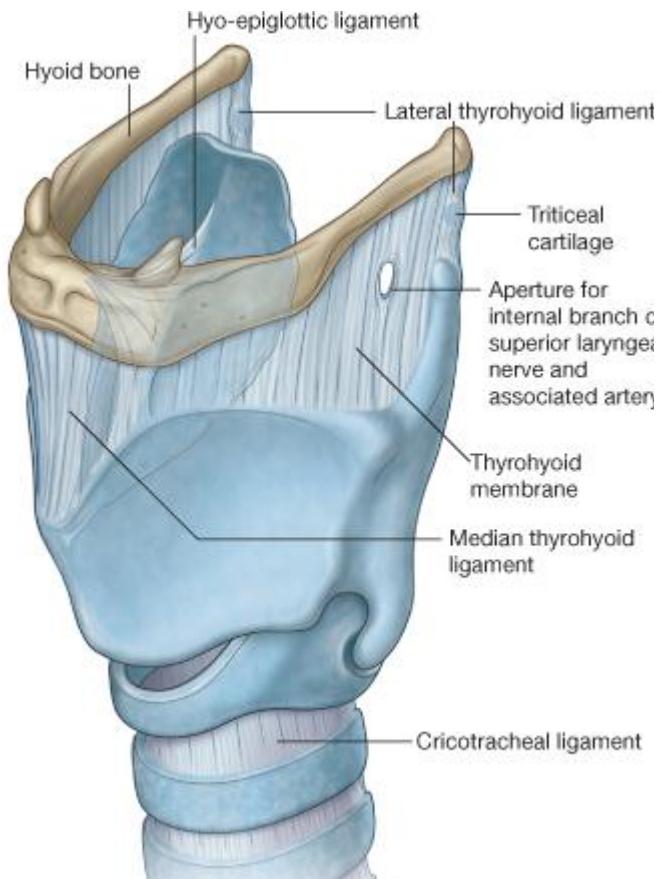
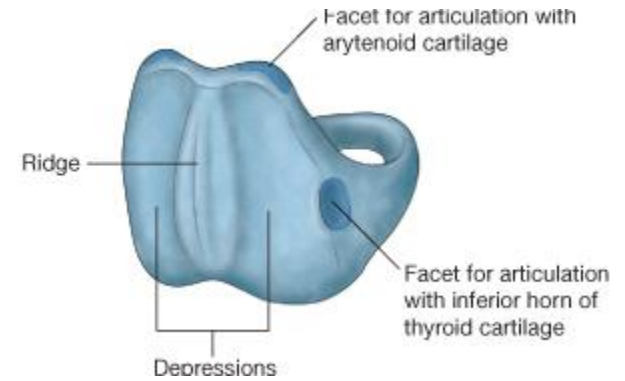
- Cartilages** → Epiglottis (1)
- Joints** → Thyroid (1)
- Ligaments** → Cricoid (1)
- Muscles** → Arytenoid (2)
- Mucosa** → Corniculate (2)
- Cuneiform (2)



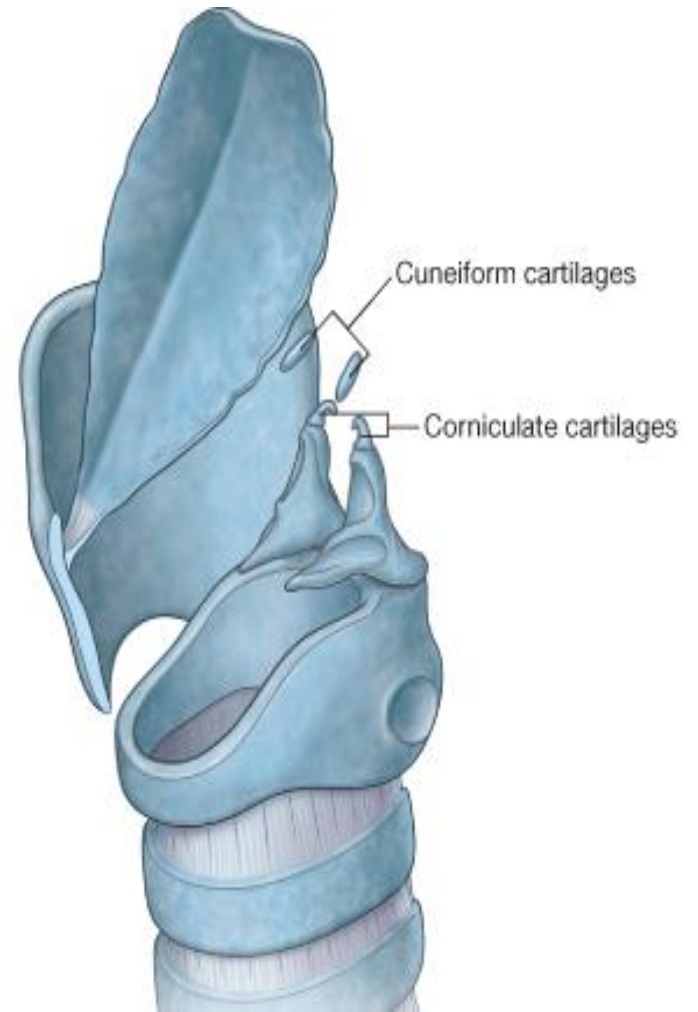
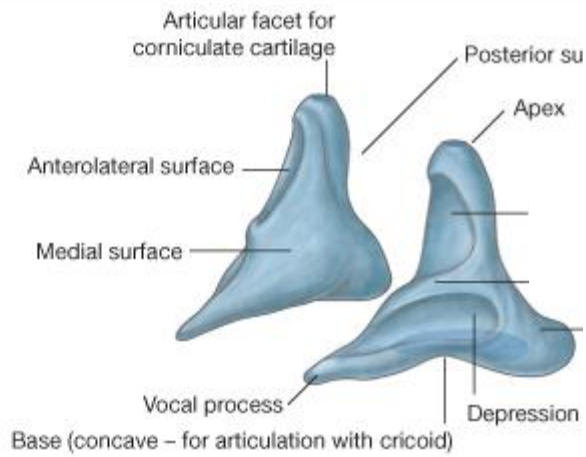
Thyroid Cartilage



Cricoid Cartilage

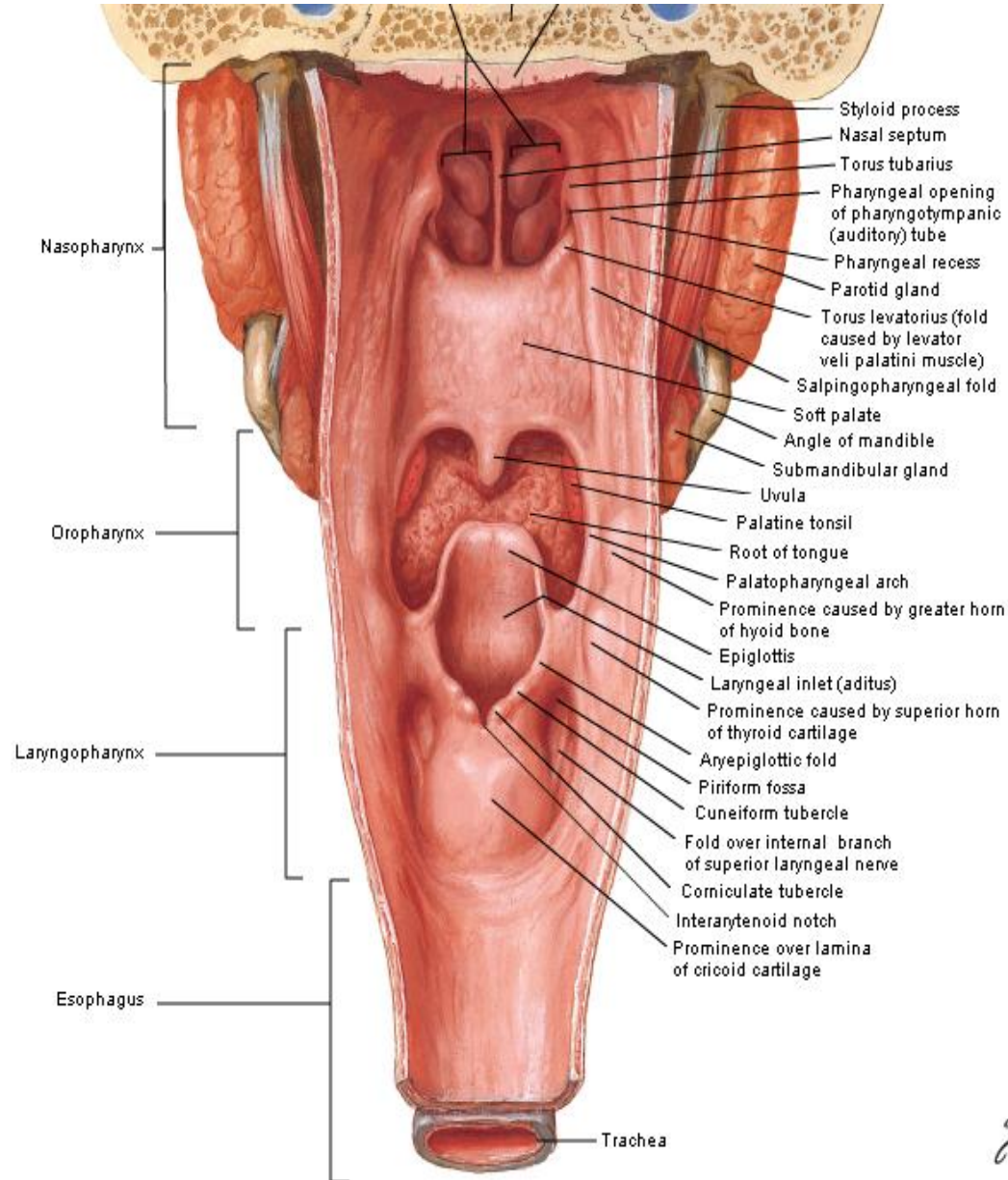
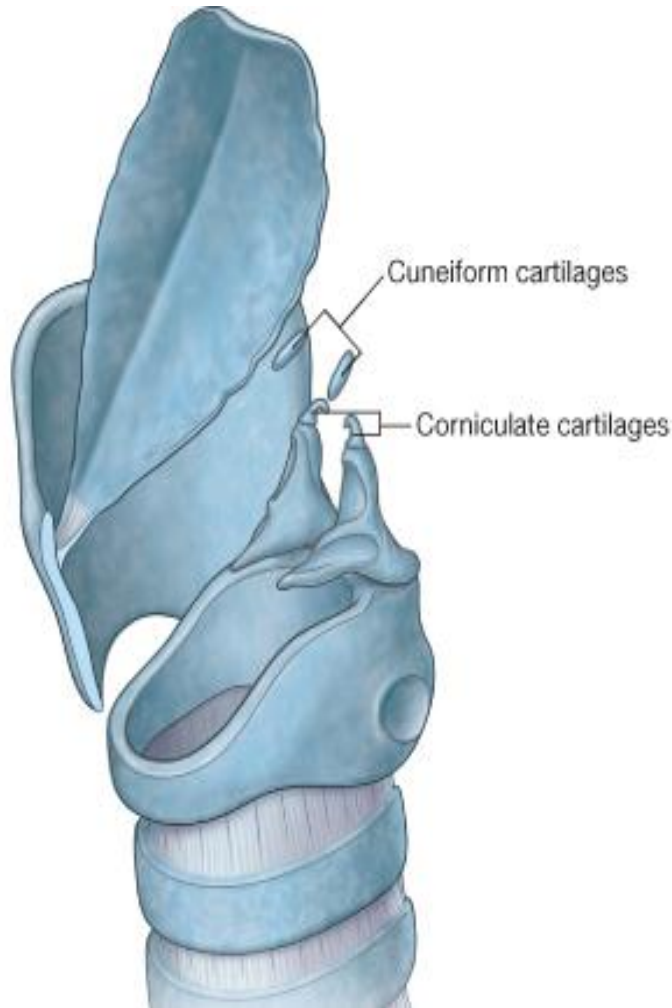


Arytenoid Cartilages



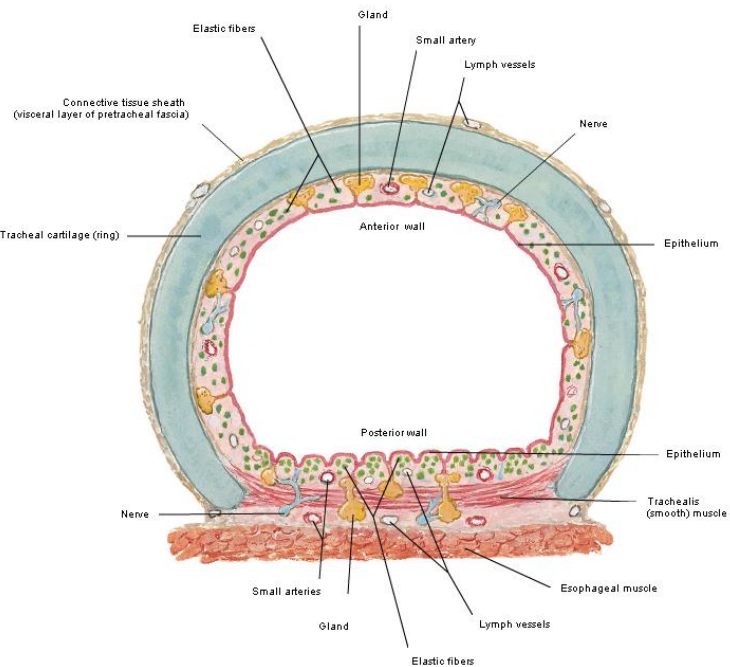
Corniculate Cartilages

Cuneiform Cartilages



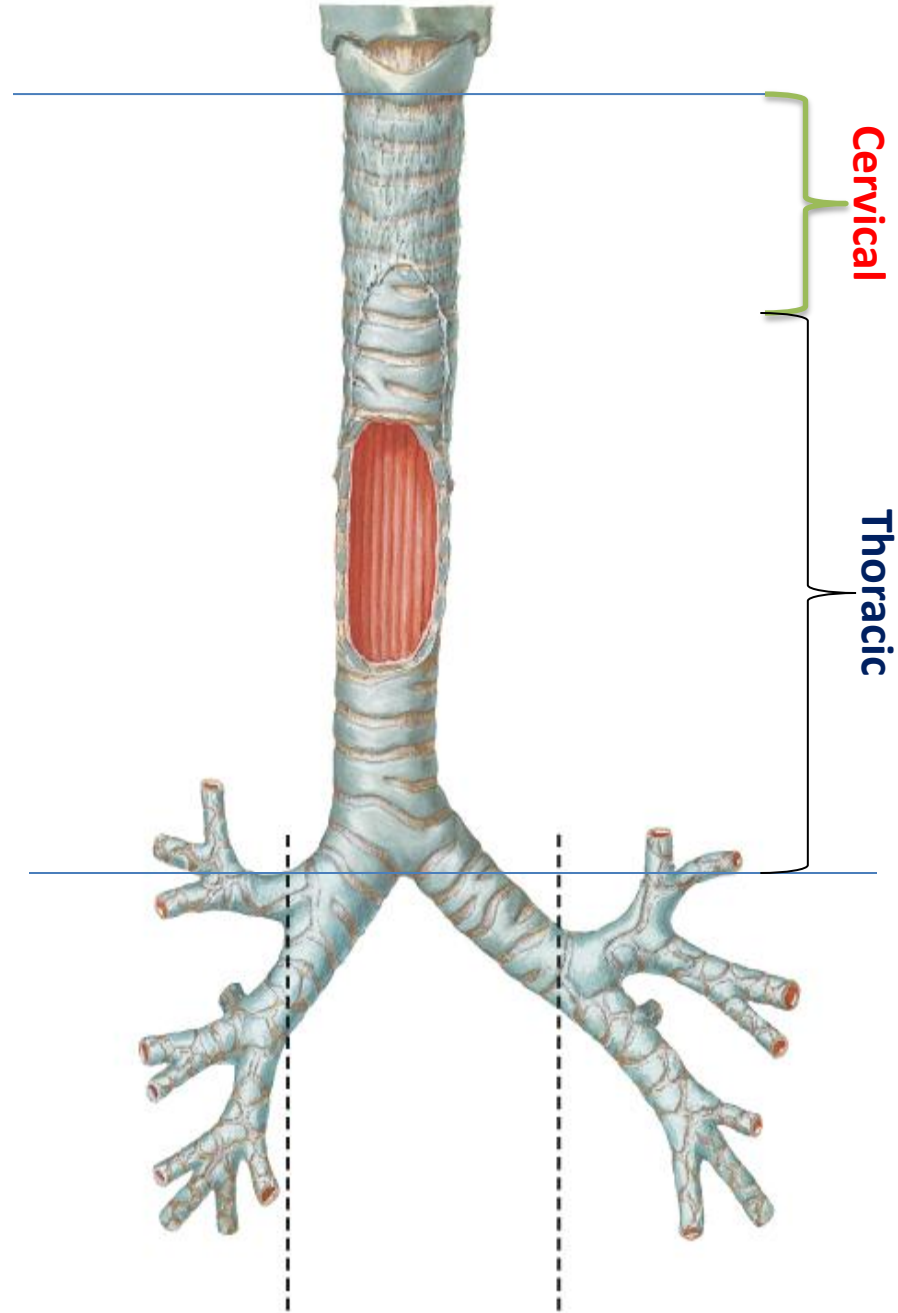
Trachea

✓ Length: 10–11 cm



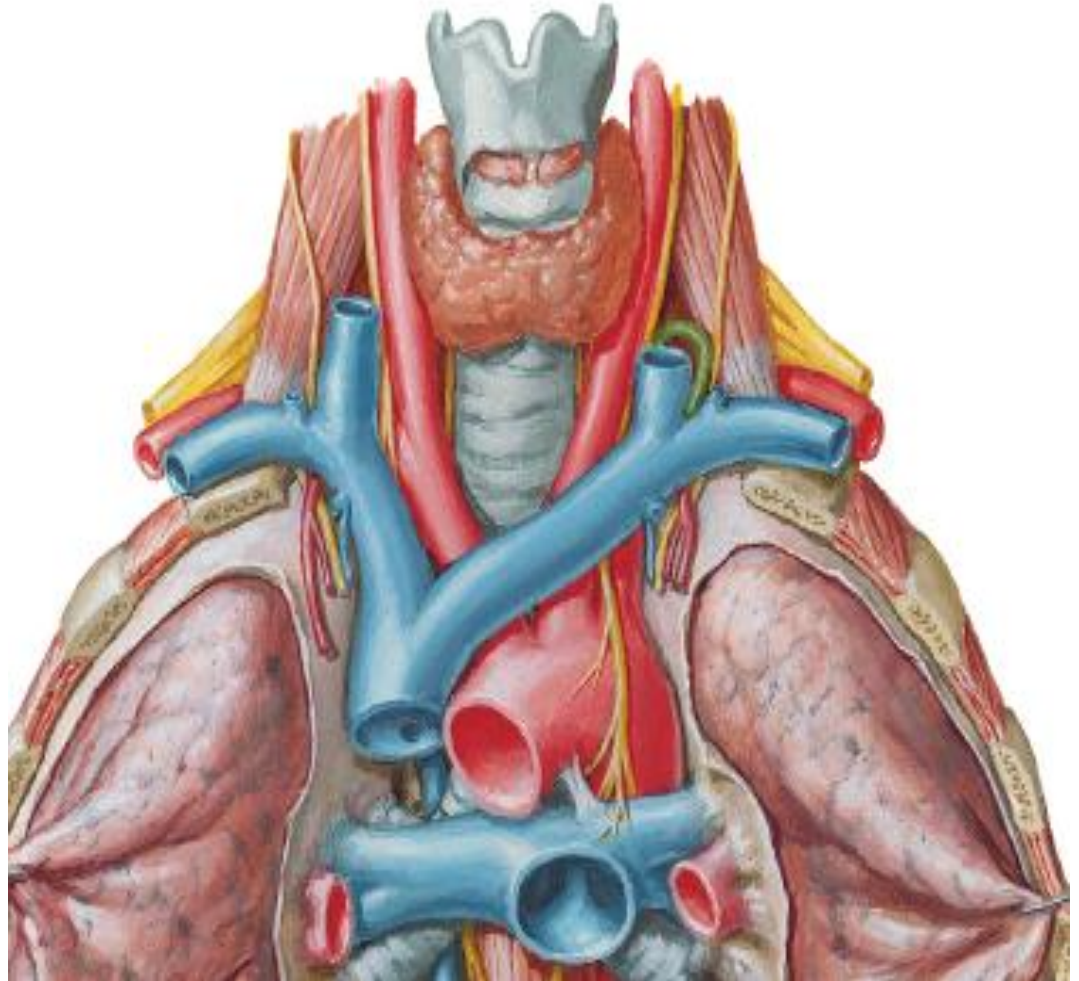
6th cervical
vertebra

5th thoracic
vertebra

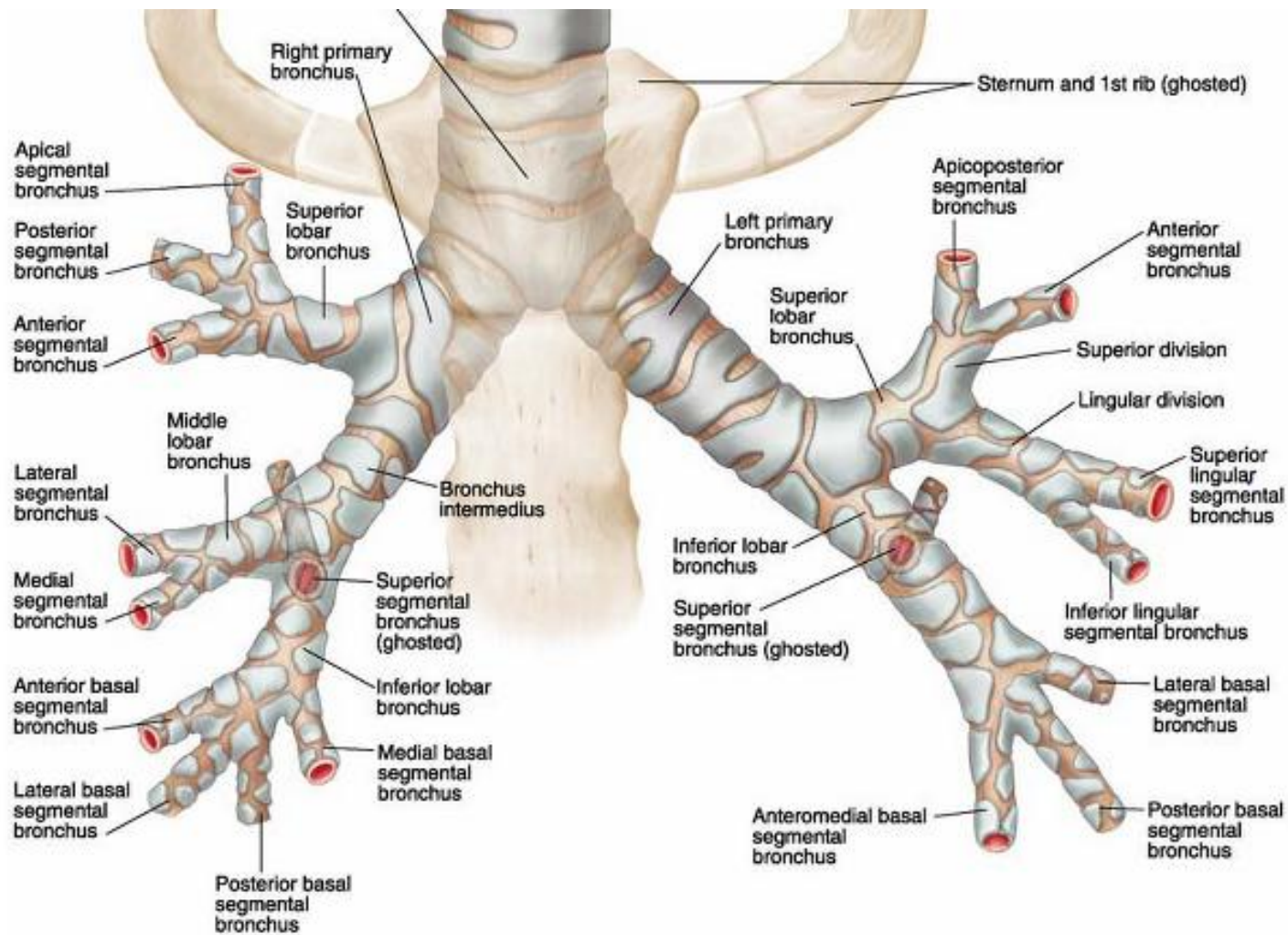


✓ ***Relations***

✓ ***Tracheostomy***

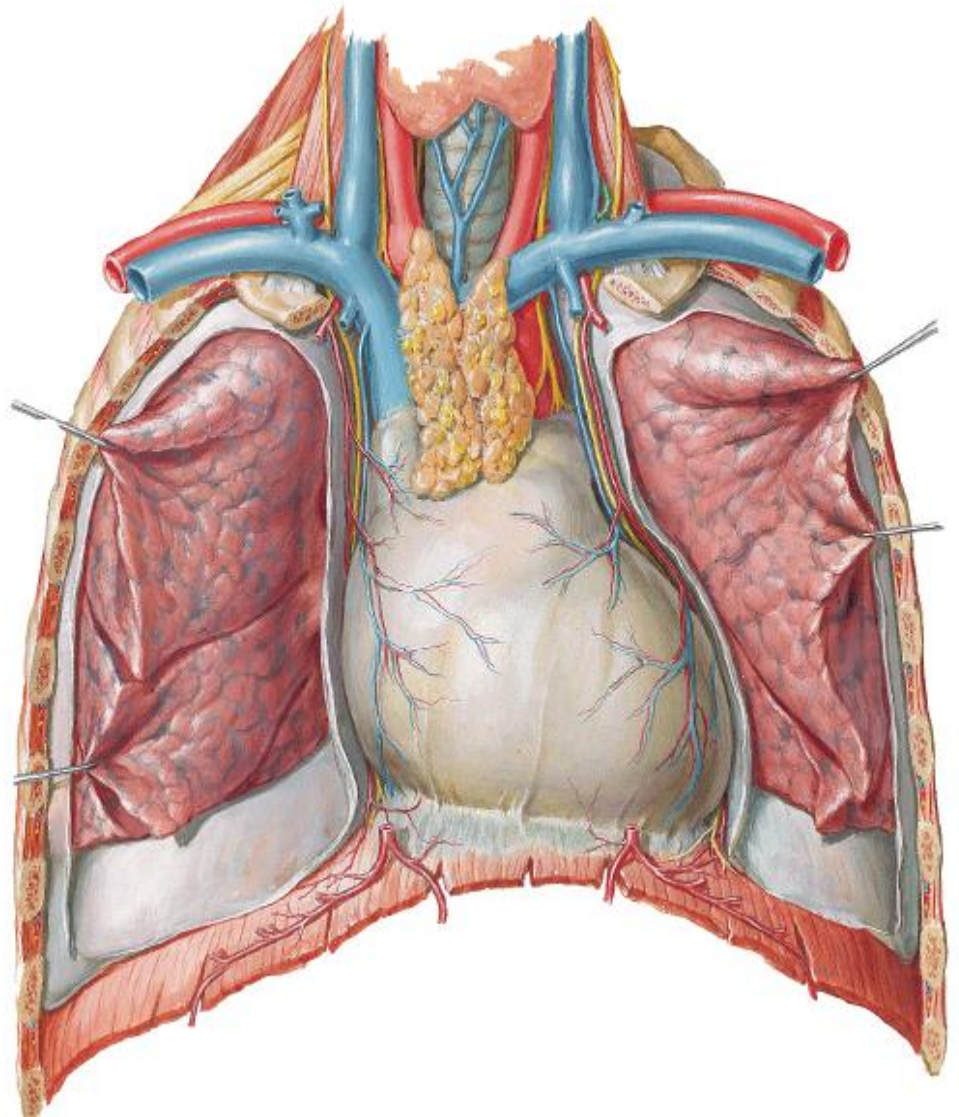


Bronchi

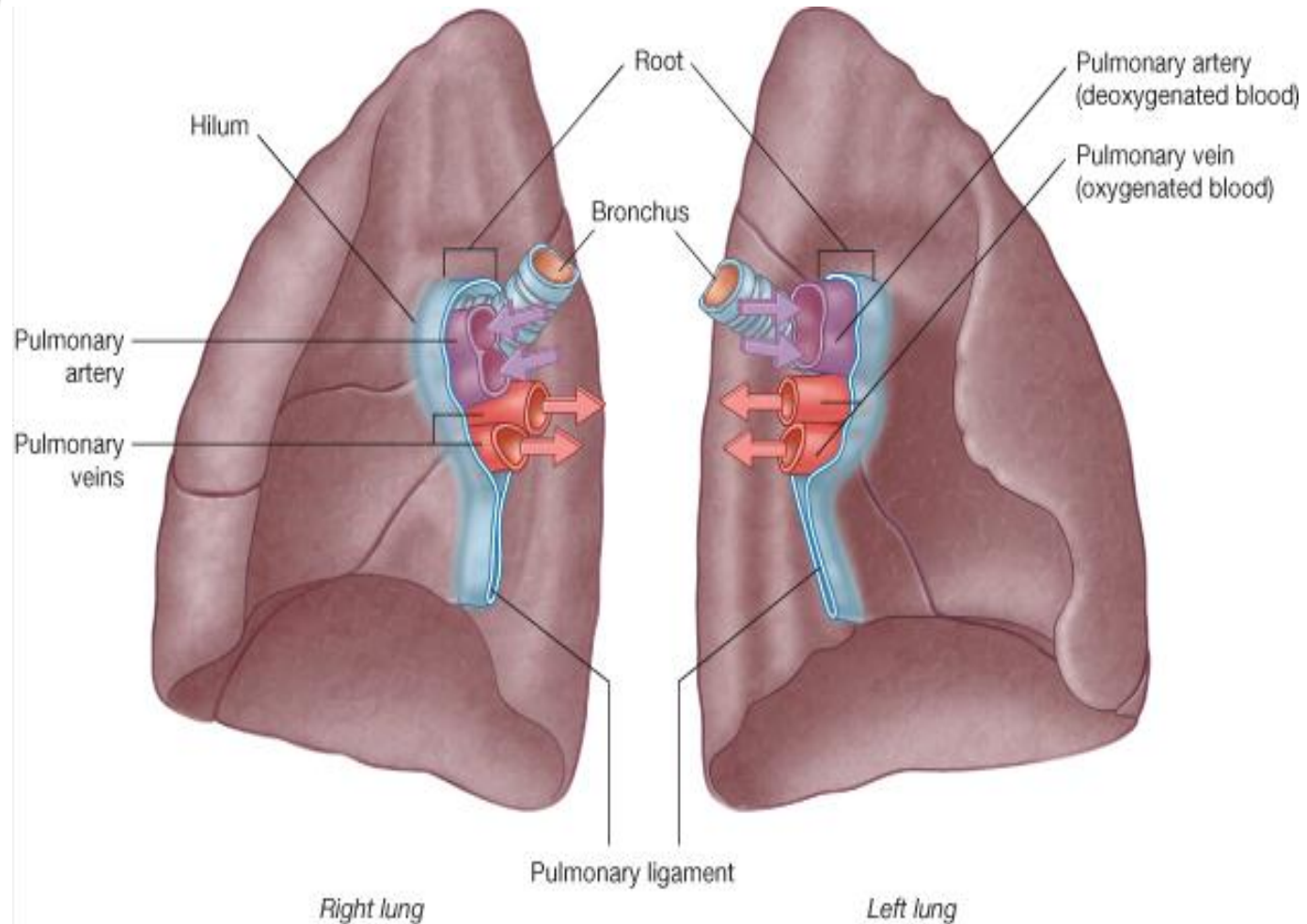


Lungs

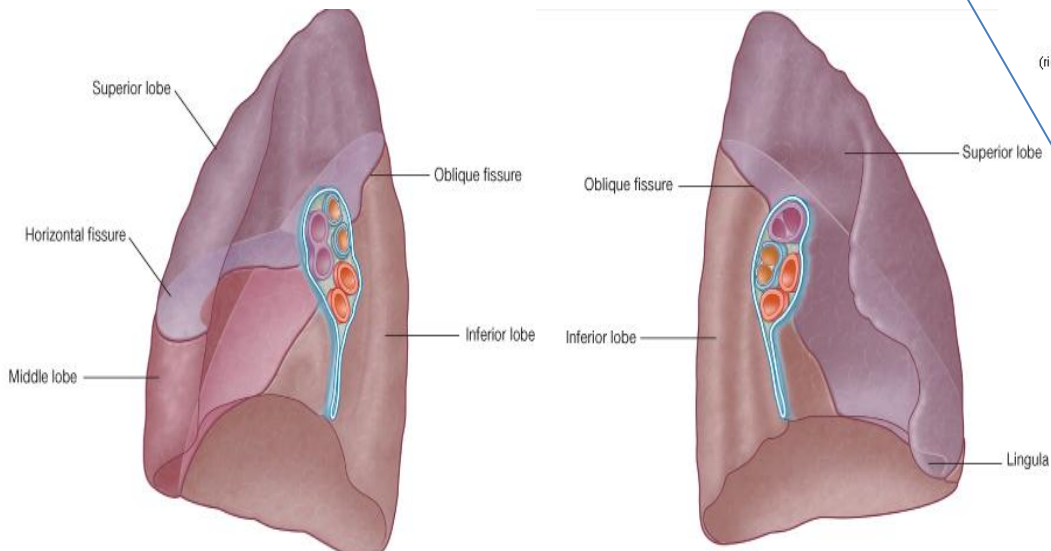
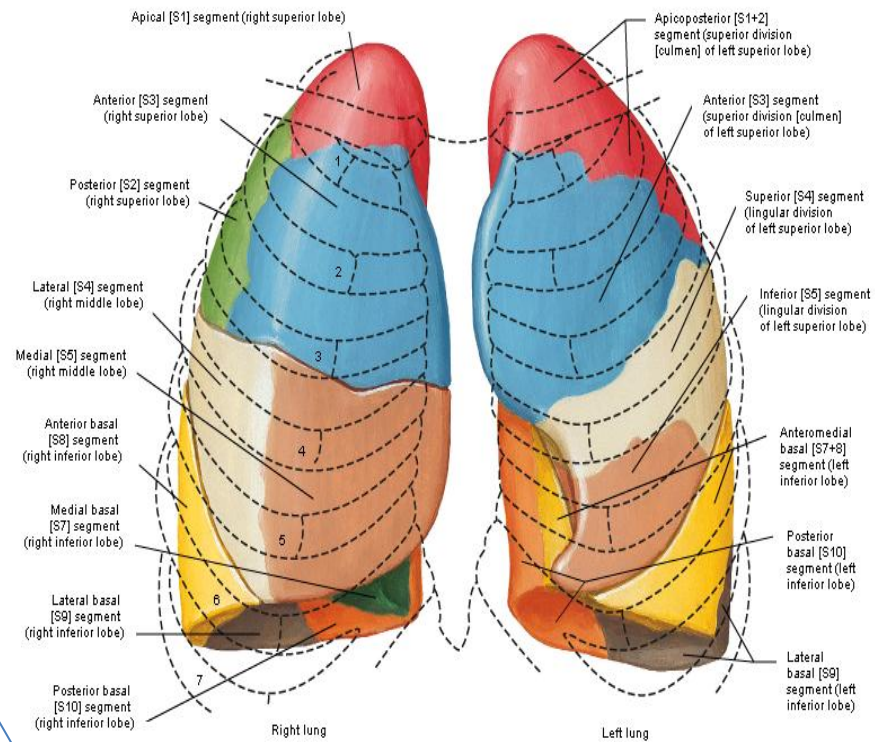
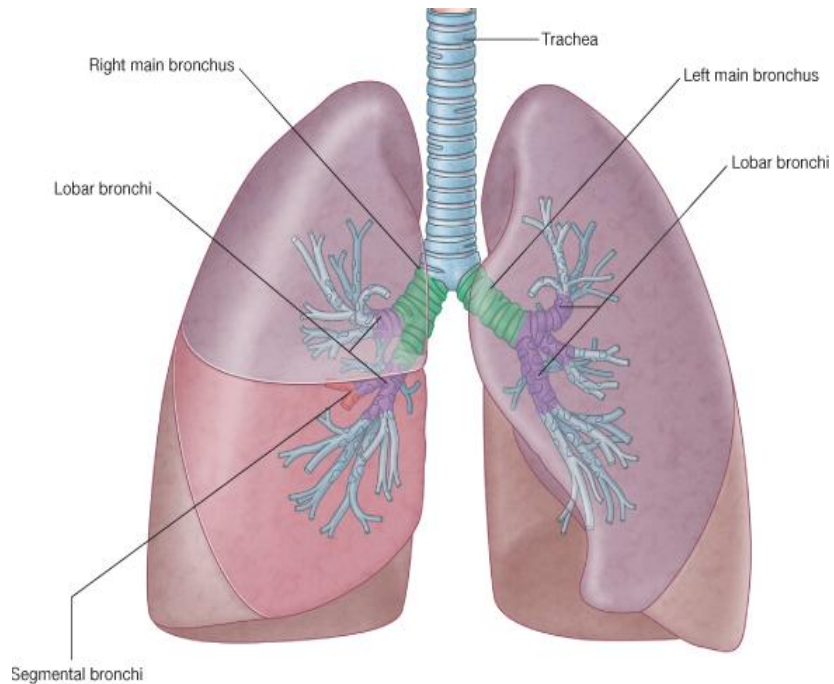
- Essential organs of respiration
- Right lung
- Left lung
- Shape: half a cone
- In pleural sac
- Connected to heart and trachea
- Lobules



- **Apex**
- **Base**
- **The lateral (costal) surface**
- **The medial surface**
- **Anterior border**
- **Posterior border**
- **Inferior border**
- **hilum**



PULMONARY FISSURES AND LOBES



Pleural membrane

