



Farzad Tat Shahdost

12.54 · Doctor of Engineering · [Edit your information](#)
[farzadtat.blog.ir](#) [farzadtat.blog.ir](#) [farzadtat.blog.ir](#)

[Add new research](#)[Overview](#) [Research](#) [Experience](#) [Stats](#) [Scores](#) [Following](#) [Saved List](#)[← Back to profile stats](#)

People who recommended your research in the last 8 weeks

[Most recent ▾](#)**S. M. Abe Kawsar**

MSc. MPhil. PhD. Postdocs (Long Term JSPS & Invitation JSPS). JASSO · Professor (Full)

*Currently working on Synthetic Organic Chemistry (Carbohydrates & Nucleosides), Antimicrobial, Computational Chemistry.***Institution and department**

University of Chittagong · Department of Chemistry

Skills

Glycobiology · Protein Analysis · Carbohydrate Chemistry + 25 others

Recommended

How can a dynamic connection be established ? between robots and space systems?

[✓ Following](#)[Send message](#)**Abdelhalim abdelnaby Zekry**

Ph. D. in Electrical Eng. · Professor

Institution and department

Ain Shams University · Department of Electronics and Electrical Communication Engineering

Skills

Wireless Communications · VLSI Technology · Electronics and Communication Engineering + 27 others

Recommended

A universal methodology for reliable predicting the non-steroidal anti-inflammatory drug solubility in supercritical carb...

[✓ Following](#)[Send message](#)**A'Kif AL_Fugara**

PhD. Geomatics Eng. and GIS · Professor (Associate)

Institution and department

Al al-Bayt University · Department of Surveying Engineering

Skills

Geomatics Engineering · Remote Sensing and GIS · Photogrammetry + 6 others

Recommended

Land capability assessment by combining LESA and GIS in a calcareous watershed, Iran

Follow

Send message

José-Andrés Gómez-Romero

Doctor of Business Administration · Representative of the Directorate of the SIG-CFE of the Coordination of...

Hydroelectric sustainability to improve decision-making in the electricity sector in Mexico

Institution and department

Comisión Federal de Electricidad · Facultad de Ingeniería

Skills

Operations Management · Production Planning · Inventory Management + 12 others

Recommended

Examination of warm transfer on extending sheet by variation iteration method strategy and investigation of arrangem...



Follow

Send message

José Roberto Vega Baudrit

PhD, MSc · Managing Director

NANOTECHNOLOGY, CHEMISTRY, POLYMER SCIENCE, BIOREFINERY, MICROPLASTIC

Institution and department

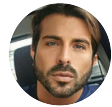
National University of Costa Rica · Escuela de Química

Skills

Biomaterials · Thermal Analysis · Polyurethane + 27 others

Recommended

In a control system, how can unwanted signals, uncertainties and errors be separated?



Follow

Send message

Mokhtar Ghodbane

PhD in Mechanical Engineering (Specialty: Energy and Thermal Systems) · Scientific Researcher (https://w...

Institution and department

Saad Dahlab University · Department of Mechanics

Recommended

A universal methodology for reliable predicting the non-steroidal anti-inflammatory drug solubility in supercritical carb...



Follow

Send message

Khalid Hashim

PhD · Doctor

Institution and department

Liverpool John Moores University · Built Environment and Sustainable Technologies (BEST) Research Institute

Skills

Water Engineering · Water Quality · Water Treatment + 12 others

Recommended

Land capability assessment by combining LESA and GIS in a calcareous watershed, Iran



Follow

Send message

Proloy Barua

Ph.D. in Health Systems Management · Researcher

Institution and department

BRAC University · James P Grant School of Public Health (JPGSPH)

Skills

Statistical Data Analysis · R Programming · Impact Assessment + 9 others

Recommended

Prevalence of depression and its effect on quality of life of medical staff in the prevalence of 19-COVID



Follow

Send message

Adil Mihoub

Associate Prof. PhD. Ing. (HDR) - Soil Science · Senior Researcher

Research scientist (soil and plant sciences)

Institution and department

Centre de Recherche Scientifique et Technique sur les Régions Arides (CRSTRA) · Soil resource management and valorization in arid regions

Skills

Sustainable Agriculture · Soil Science · Phosphorus + 4 others

Recommended

Land capability assessment by combining LESA and GIS in a calcareous watershed, Iran



Follow

Send message

Nilimesh Das

PhD Student · PhD Student

Will submit my PhD thesis soon. Looking for postdoc.

Institution and department

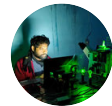
Indian Institute of Technology Kanpur · Department of Chemistry

Skills

Fluorescence Correlation Spectroscopy · Circular Dichroism Spectroscopy · Fluorescence + 7 others

Recommended

Developing a global approach for determining the molar heat capacity of deep eutectic solvents



✓ Following

Send message

Ifechukwu Ezemagu

Institution and department

Nnamdi Azikiwe University, Awka · Department of Chemical Engineering

Recommended

Examination of warm transfer on extending sheet by variation iteration method strategy and investigation of arrangem...



Follow

Send message

Chinaza Godswill Awuchi

PhD Scholar, MSc, BSc. Member NIFST, NSN, IJAAR, YALI

Institution

Kampala International University (KIU)

Skills



Food Science and Technology · Food Chemistry · Nutrition and toxicology + 19 others

Recommended

Land capability assessment by combining LESA and GIS in a calcareous watershed, Iran

[Follow](#)

[Send message](#)

Ali F Almehemdi

Professor · Professor

Head of Department. Im interesting in medicinal plants, active compounds, multi-trait, multivariate analysis.



Institution and department

University of Anbar · Center for Desert Studies

Skills

Biometry · Jatropha · Biofuels + 23 others

Recommended

Spirit in Literature and Psychology

[Follow](#)

[Send message](#)

Abderrahmane Khechekhouché

PhD

Institution and department

El-Oued University · Mechanical Engineering

Skills

Renewable Energy Technologies · Solar Collectors · Solar Drying + 1 other

Recommended

Prevalence of depression and its effect on quality of life of medical staff in the prevalence of 19-COVID



[Follow](#)

[Send message](#)

Syed KHALID Mustafa

Ph. D. (Organic Chemistry) · Professor (Assistant)

Institution and department

University of Tabuk · Department of Chemistry

Skills

Synthesis · Organic Synthesis · Heterocyclic Chemistry + 3 others

Recommended

Examination of warm transfer on extending sheet by variation iteration method strategy and investigation of arrangem...



[Follow](#)

[Send message](#)

Uday CH Hasan

Doctor of Philosophy · Professor (Full)

Institution and department

Al-Kitab University · Dept. of Sports Education

Skills

Research Methods · SPSS · Biomechanics + 9 others

Recommended

Designing urban spaces to improve social and human interactions



[Follow](#)

[Send message](#)

Sevgi Kansız

PhD · Professor (Assistant)

**Institution and department**

Samsun University Faculty of Engineering · Department of Fundamental Sciences

Skills

XRD Analysis · X-ray Diffraction + 2 others

Recommended

Examination of warm transfer on extending sheet by variation iteration method strategy and investigation of arrangem...

[Follow](#)[Send message](#)**Aijaz Panhwar**

Environmental Engineer · S.E/AQMR

*Looking for collaboration in wastewater treatment techniques. ISO-17025 (QMS,LMS) ISO-17020;17065. Industrial inkjet ink***Institution and department**

PCSIR · Environment Sciences, Textile Research Center.

Skills

Quality Management Systems · Water and Wastewater Treatment · Textile Chemistry + 26 others

Recommended

How do Isolate sensor and actuator faults relative to each other or to their type (or related signals or observer signals)?

[✓ Following](#)[Send message](#)**Abdullah Y Muaad**

finished master · RESEARCH SCHOLAR

*Looking to work on challenging tasks in deep learning, NLP, Image Processing and always open for collaborations***Institution and department**

University of Mysore · Department of Computer Science

Skills

Pattern Recognition · Text Classification · Classification + 4 others

Recommended

Prevalence of depression and its effect on quality of life of medical staff in the prevalence of 19-COVID

[✓ Following](#)[Send message](#)**Ahmad A. Al Rababah**

Professor · Professor (Full)

*Teaching and research in different fields of computing and information technology. Editor in chief of a computer journal***Institution and department**

King Abdulaziz University · Department of Computer Science

Skills

Kalman Filtering · Software Development · Software Engineering + 6 others

Recommended

A universal methodology for reliable predicting the non-steroidal anti-inflammatory drug solubility in supercritical carb...

[✓ Following](#)[Send message](#)

Sina Kazemi Esfeh

Master of Engineering

Institution and department

Dalian University of Technology · State Key Laboratory of Coastal and Offshore Engineering

Skills

Structural Analysis · Finite Element Analysis · Finite Element Modeling + 5 others

Recommended

Land capability assessment by combining LESA and GIS in a calcareous watershed, Iran

[Follow](#)[Send message](#)**Mohamed Samy Abousenna**

BVSc. MVSc. PhD of Veterinary Virology · Professor (Assistant)

Looking for Postdoctoral position in Virology

Institution and department

Central Laboratory for Evaluation of Veterinary Biologics, Agricultural Research Center, Egypt · Virology

Skills

Emerging Infectious Diseases · Zoonotic Diseases · Animal Virology + 24 others

Recommended

Spirit in Literature and Psychology

[Follow](#)[Send message](#)**Kumar Ganesan**

Ph.D. · Researcher

Institution and department

The University of Hong Kong · Li Ka Shing Faculty of Medicine

Skills

Cell Signaling · Biochemistry · Molecular Biology

Recommended

A universal methodology for reliable predicting the non-steroidal anti-inflammatory drug solubility in supercritical carb...

[Follow](#)[Send message](#)**Mahesh Premarathna**

PhD (Reading) · Research Assistant (Gr. I)

Institution and department

National Institute of Fundamental Studies - Sri Lanka · Microbial Biotechnology

Skills

Buddhist Philosophy · Microbial Biotechnology · Philosophy of Mind + 27 others

Recommended

Land capability assessment by combining LESA and GIS in a calcareous watershed, Iran

[Follow](#)[Send message](#)**Urge Gerema**

Master of Science · Lecturer

looking for potential collaborators!!

Institution and department

Jimma University · Department of Biomedical Sciences



Skills

Non-Communicable Diseases

Recommended

Prevalence of depression and its effect on quality of life of medical staff in the prevalence of 19-COVID

[Follow](#)[Send message](#)**Khalil El Khatabi**

PhD · PhD

Looking for post-doctoral position

Institution and department

Université Moulay Ismail · Department of chemistry

Skills

MM-PBSA · Virtual Screening · DFT Calculations + 6 others

Recommended

Examination of warm transfer on extending sheet by variation iteration method strategy and investigation of arrangem...

[✓ Following](#)[Send message](#)**Deep Bhattacharjee**

Project Director · Project Director

Actively working on Electrohydrodynamics, General Relativity, Superstring Theory, Black Hole Physics, Quantum Cosmology.

Institution and department

AATWRI - Electro-Gravitational Space Propulsion Laboratory · G-Fuel Development Laboratory

Skills

General Relativity · M-Theory · Particle Physics + 26 others

Recommended

A universal methodology for reliable predicting the non-steroidal anti-inflammatory drug solubility in supercritical carb...

[✓ Following](#)[Send message](#)**Javad Sharifi**

Ph.D. · Researcher

Institution and department

Ferdowsi University Of Mashhad · Department of Geology

Skills

Petroleum Geoscience · Exploration Geophysics · Rock Physics + 7 others

Recommended

Examination of warm transfer on extending sheet by variation iteration method strategy and investigation of arrangem...

[Follow](#)[Send message](#)**دعاء شاكر محمود**

PHD Media - baghdad University -public relations dept · دكتورة

Institution and department

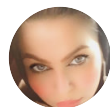
جامعة بغداد · العلاقات العامة

Skills

التسويق - العلاقات العامة -التقنيات والتكنولوجيا · Mass Communication

Recommended

Spirit in Literature and Psychology



[Follow](#)[Send message](#)**Bexruz Turdiyev**

Doctor of Philosophy (PhD) · Doctor of Philosophy (PhD)

*A member of the Council of Youth Scientists of Uzbekistan***Institution and department**

Buxoro Davlat Universiteti · Department of History

Skills

Political Philosophy · Legal Analysis · Cultural Studies + 4 others

Recommended

Land capability assessment by combining LESA and GIS in a calcareous watershed, Iran

[Follow](#)[Send message](#)**Om P Singh**

Professor

Institution and department

Rajmata Vijayaraje Scindia Krishi Vishwa Vidyalaya (RVSKVV) · Department of Horticulture

Recommended

Prevalence of depression and its effect on quality of life of medical staff in the prevalence of 19-COVID

[✓ Following](#)[Send message](#)**Primus Azinwi Tamfuh**

PhD in Soil Science/Awarded in the University of Yaounde 1 (Cameroon)

Institution and department

Université de Dschang/University of Bamenda · Soil Science (Dschang)/Mining and Mineral Engineering (Bamenda)

Skills

Rare Earth Elements · Environmental Science · Agrogeology + 2 others

Recommended

What are the advantages (as well as disadvantages) of piecemeal design for a highly nonlinear system?

[✓ Following](#)[Send message](#)**József Richárd Lennert**

Bachelor of Mechatronics Engineering

Institution and department

University of Szeged · Department of Mechatronics and Automation

Skills

Mechanical Behavior of Materials · Mechanical Testing · Materials Testing + 3 others

Recommended

Land capability assessment by combining LESA and GIS in a calcareous watershed, Iran

[Follow](#)[Send message](#)**Supaprawat Siripipatthanakul**

Doctor of Philosophy · Researcher

PhD, DDS, MS (Management), MS (Oral Medicine), BPH (Public Health Administration), B.Ed. (Educational

PhD, DDS, MS (Management), MS (Oral Medicine), DPH (Public Health Administration), D.Ed. (Educational Measurement), etc.



Institution

Manipal GlobalNxt University

Skills

Quantitative Research · Research Methodology · Healthcare Management + 2 others

Recommended

Prevalence of depression and its effect on quality of life of medical staff in the prevalence of 19-COVID

✓ Following

[Send message](#)

Hatem Albasis

Professor · Professor of Curricula & Teaching Methods, Faculty of Education, Albaath University

Professor of Curricula and Teaching Methods, Arabic Language.



Institution and department

Al-Baath University · Faculty of Education - Curricula & Teaching Methods

Skills

Teaching and Learning · Teaching Experience · Teaching Materials + 13 others

Recommended

Spirit in Literature and Psychology

✓ Following

[Send message](#)

Necmi N. Dege

Professor



Institution and department

Sciences Faculty · Crystallography

Skills

DFT Calculations · Computational Materials Science · Crystal Structure Hydrogen Bonding X-ray Crystallography Crystallography Molecular Structure Single ... Diffraction Coordination Chemistry Structural Chemistry Atoms Crystal Growth Crystal Engineering Metal ... Frameworks Coordination Compounds X-ray Diffraction Ions Coordination Complexes Supramolecular Chemistry Inorganic Chemistry Coordination ... Complexes Chemicals Catalyst Crystal Crystallization Synthesis Transition ... Complexes DFT Calculations 13C-NMR Single Crystal Structure Determination Inorganic Materials Structure Analysis Applied ... Crystallography Spectroscopy Spectra Density ... Theory 1H-NMR Polymerization Inorganic Synthesis Ab Initio Infrared ... Molecular Magnetism

Recommended

Developing a global approach for determining the molar heat capacity of deep eutectic solvents

✓ Following

[Send message](#)

Manoj Tripathi

Doctor of Philosophy · Professor



Institution and department

Rajmata Vijayaraje Scindia Krishi Vishwa Vidyalaya (RVSKVV) · Biotechnology

Skills

Agriculture · Crop Production · Sustainable Agriculture + 9 others

Recommended

Land capability assessment by combining LESA and GIS in a calcareous watershed, Iran

✓ Following

[Send message](#)

Punya Sachdeva

Res (H) Neurosciences



500 (17) Neurosciences

Institution and department

Amity University · Amity Institute of Neuropsychology and Neurosciences (AINN)

Skills

Neurodegenerative Diseases · Neurophysiology · Synaptic Plasticity + 14 others

Recommended

A universal methodology for reliable predicting the non-steroidal anti-inflammatory drug solubility in supercritical carb...

Follow

Send message



Dhaval Sahija

Doctor of Business Administration

Institution and department

North Central University · Department of Information Technology

Skills

Machine Learning · Information Technology · Recognition + 13 others

Recommended

A universal methodology for reliable predicting the non-steroidal anti-inflammatory drug solubility in supercritical carb...

✓ Following

Send message



Pichakoon Auttawechasakoon

Master of Arts · Master Degree Student (Thai Studies)

I have been studying for a master of arts degree (Thai Studies Program) at Burapha University, Thailand.

Institution and department

Burapha University · Faculty of Humanities and Social Sciences

Skills

Interviewing · Qualitative Analysis

Recommended

Examination of warm transfer on extending sheet by variation iteration method strategy and investigation of arrangem...

✓ Following

Send message



Haitham Nobanee

Ph.D · Professor of Finance

Institution and department

Abu Dhabi University · College of Business

Skills

Stocks · Financial Economics · Financial Markets

Recommended

Examination of warm transfer on extending sheet by variation iteration method strategy and investigation of arrangem...

Follow

Send message



Ramadan Elaies

Ph.D Information studies · Professor (Assistant)

Associat editor for "IJICTRAME" & "IJDLDC" Certified peer reviewer for Elsevier & WoS journals

Institution and department

University of Benghazi · Information studies

Skills

Digital Libraries · Information Systems · Information Literacy + 16 others

Recommended



Recommended

Article Certificate ((Systematic review of fuzzy systems and concepts of fuzzy mathematics))

✓ Following

[Send message](#)

Mostafa A Hussien

Associate Prof. of inorganic chemistry · Professor (Associate)

Studying biological app. of metal complexes and organometallic comp. and interesting in Bioinformatic and drug design.

Institution and department

King Abdulaziz University · Department of Chemistry

Skills

Protein Structure · Bioinformatics · Biochemistry + 27 others

Recommended

Examination of warm transfer on extending sheet by variation iteration method strategy and investigation of arrangem...



Follow

[Send message](#)

Srini Vasan

PhD

Your feedback is always welcome. Thank you.

Institution and department

University of New Mexico · Department of Mathematics & Statistics

Skills

Photonics · Repair · Soldering + 16 others

Recommended

Land capability assessment by combining LESA and GIS in a calcareous watershed, Iran



Follow

[Send message](#)

Amin Nikpay

Research Entomologist (Ph.D.)

Institution and department

Sugarcane & By-Products Development Company, Ahwaz, Iran · Plant Protection

Skills

Integrated Pest Management · Host Plant Resistance · Biological Control of Stalk Borers + 7 others

Recommended

Spirit in Literature and Psychology



Follow

[Send message](#)

Aref Wazwaz

Associate Professor · Professor (Associate)

Institution and department

Dhofar University · Department of Chemical Engineering

Skills

Aluminium · Electrical Conductivity · Anodization + 18 others

Recommended

Examination of warm transfer on extending sheet by variation iteration method strategy and investigation of arrangem...



✓ Following

[Send message](#)

Chaib Rachid

Professor · Professor

*Currently, I am a research professor at the University of Brothers Mentouri Constantine 1, Algeria.***Institution and department**

University of Constantine 1 · Département Ingénierie des transports: Filière Hygiène et Sécurité Industrielle

Skills

Machine Tools · Mechanical Engineering · Machining + 27 others

Recommended

Prevalence of depression and its effect on quality of life of medical staff in the prevalence of 19-COVID

[Follow](#)[Send message](#)**Kosta Sotiroski**

Professor · Professor (Full)

Institution and department

University "St. Kliment Ohridski" - Bitola · Faculty of Economics - Prilep

Skills

Applied Econometrics · Information System Management · Time Series Econometrics + 27 others

Recommended

Prevalence of depression and its effect on quality of life of medical staff in the prevalence of 19-COVID

[Follow](#)[Send message](#)**Hend Ahmed Hamed**

PhD (Early career researcher) · Lecturer

*Sustainable agriculture, Abiotic stresses, Therapeutic food***Institution and department**

Sohag University · Horticulture(Olericulture)

Skills

Vegetable Production · Irrigation and Water Management · mushroom breeding + 5 others

Recommended

Design process of adaptive fuzzy slip model controllers and cover controllers based on stability mathematics from the...

[✓ Following](#)[Send message](#)**Hashem Jahangir**

PhD in Structural Engineering · Assistant Professor

Institution and department

University of Birjand · Department of Civil Engineering

Skills

Structural retrofitting · Rehabilitation and Strengthening Methods · Structural Health Monitoring and Damage Detection + 1 other

Recommended

Land capability assessment by combining LESA and GIS in a calcareous watershed, Iran

[Follow](#)[Send message](#)**Shadrack Katuu**

D Litt et Phil in Information Science · Research Associate



Institution and department

University of South Africa · Department of Information Science

Skills

Enterprise Content Management · Archival Science · Records management + 13 others

Recommended

Prevalence of depression and its effect on quality of life of medical staff in the prevalence of 19-COVID

✓ Following

[Send message](#)

Medhat Elsahookie

Doctor of Philosophy KSU,USA · Professor Emeritus



Institution and department

University of Baghdad · Dept. of Field Crop Sciences

Skills

Higher Education Teaching · Academic Writing · Teaching + 27 others

Recommended

A universal methodology for reliable predicting the non-steroidal anti-inflammatory drug solubility in supercritical carb...

Follow

[Send message](#)

Hikmat Almadhkhori

Professor · Professor



Institution and department

Al-Mustansiriyah University · Theoretical sciences

Skills

Biomechanics · Sport Biomechanics · Sports Science + 26 others

Recommended

A universal methodology for reliable predicting the non-steroidal anti-inflammatory drug solubility in supercritical carb...

Follow

[Send message](#)

Emad Kuffi

Asst.prof.phd. · IRAQ



Institution and department

Al-Mansour University College · Department of Communication

Skills

Mathematical Analysis · Functional Analysis · Real Analysis + 17 others

Recommended

Examination of warm transfer on extending sheet by variation iteration method strategy and investigation of arrangem...

Follow

[Send message](#)

Augusto Da Costa

Doctor of Education (guidance and Counseling) · Director of Master Program of Education

lecturer, Director of Master study program, National Evaluator of ANAAA & MESCC, Reviewer of International Journal



Institution and department

Instituto Superior Cristal Balide Dili Timor Leste · Master Study Program of Education

Skills

Teaching and Learning · Pedagogy and Education · Educational Evaluation + 3 others

Recommended

Land capability assessment by combining LESA and GIS in a calcareous watershed, Iran

[Follow](#)

[Send message](#)

Keshab Babu Koirala

Ph.D. Plant Breeding · Director Crops and Horticulture

Institution and department

Nepal Agricultural Research Council · Crops and Horticulture NARC Nepal

Skills

Variability · Stability + 1 other

Recommended

Land capability assessment by combining LESA and GIS in a calcareous watershed, Iran

[✓ Following](#)

[Send message](#)



Esmaeel Babaenezhad

Ph.D. in Clinical Biochemistry · PhD

Institution and department

Shahid Beheshti University of Medical Sciences · Clinical Biochemistry

Skills

Real-Time Polymerase Chain Reaction · Gel Electrophoresis · RNA Extraction + 10 others

Recommended

کودک دوستدار شهر های شاخص بررسی و مطالعه نمین صفاتی رسا

[Follow](#)

[Send message](#)



Nenad Petrovic

PhD Candidate · Teaching Assistant

Institution and department

University of Niš · Department of Computer Science

Skills

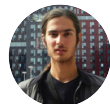
Future Internet · edge computing · Fog Computing + 5 others

Recommended

An overview of missile guidance and control

[Follow](#)

[Send message](#)



Osaretin Christabel Okonji

Doctoral Researcher

Institution and department

University of the Western Cape · School of Pharmacy

Skills

Antimicrobial Susceptibility Testing · Drug Resistant Tuberculosis · Clinical Studies + 5 others

Recommended

A universal methodology for reliable predicting the non-steroidal anti-inflammatory drug solubility in supercritical carb...

[✓ Following](#)

[Send message](#)

