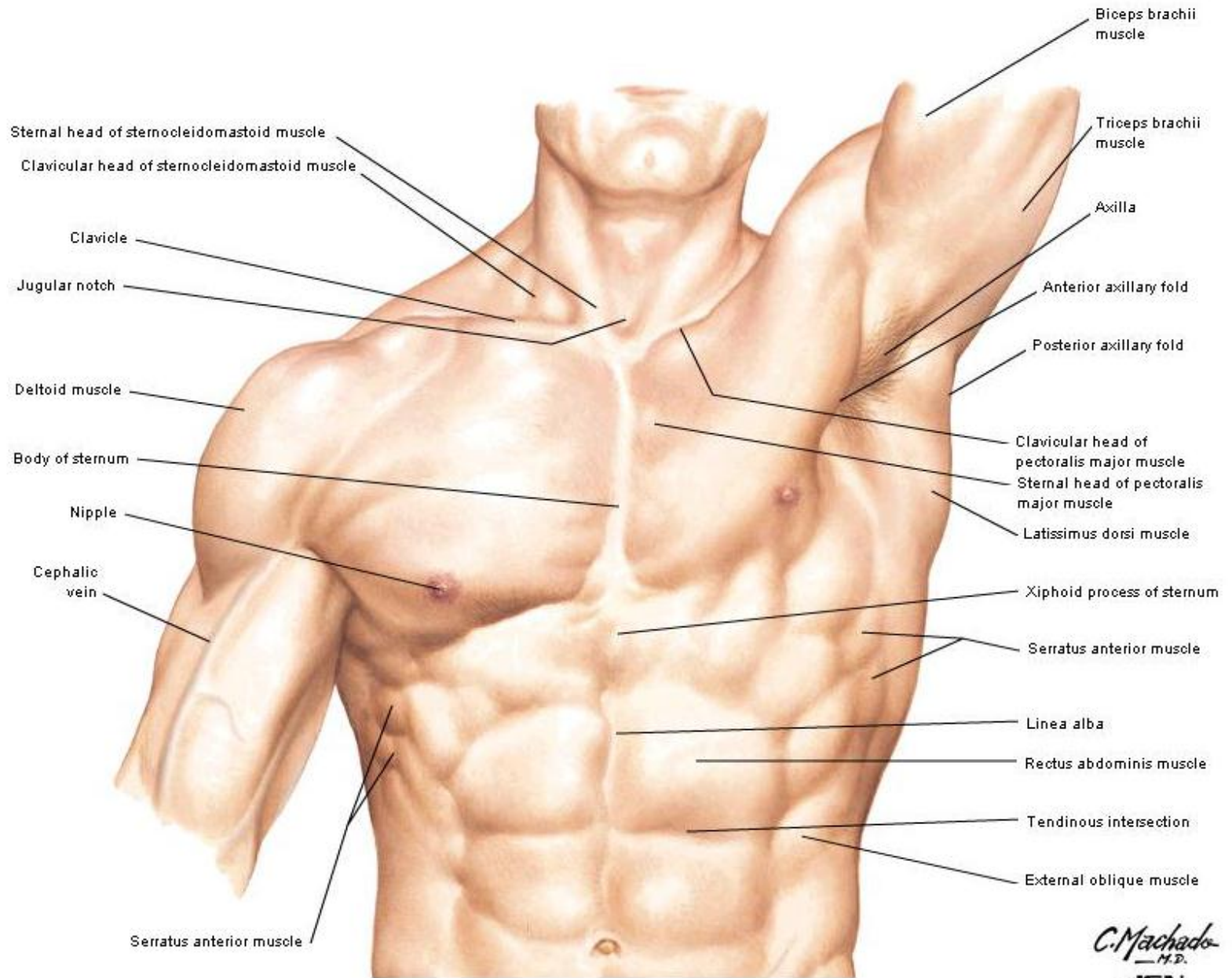


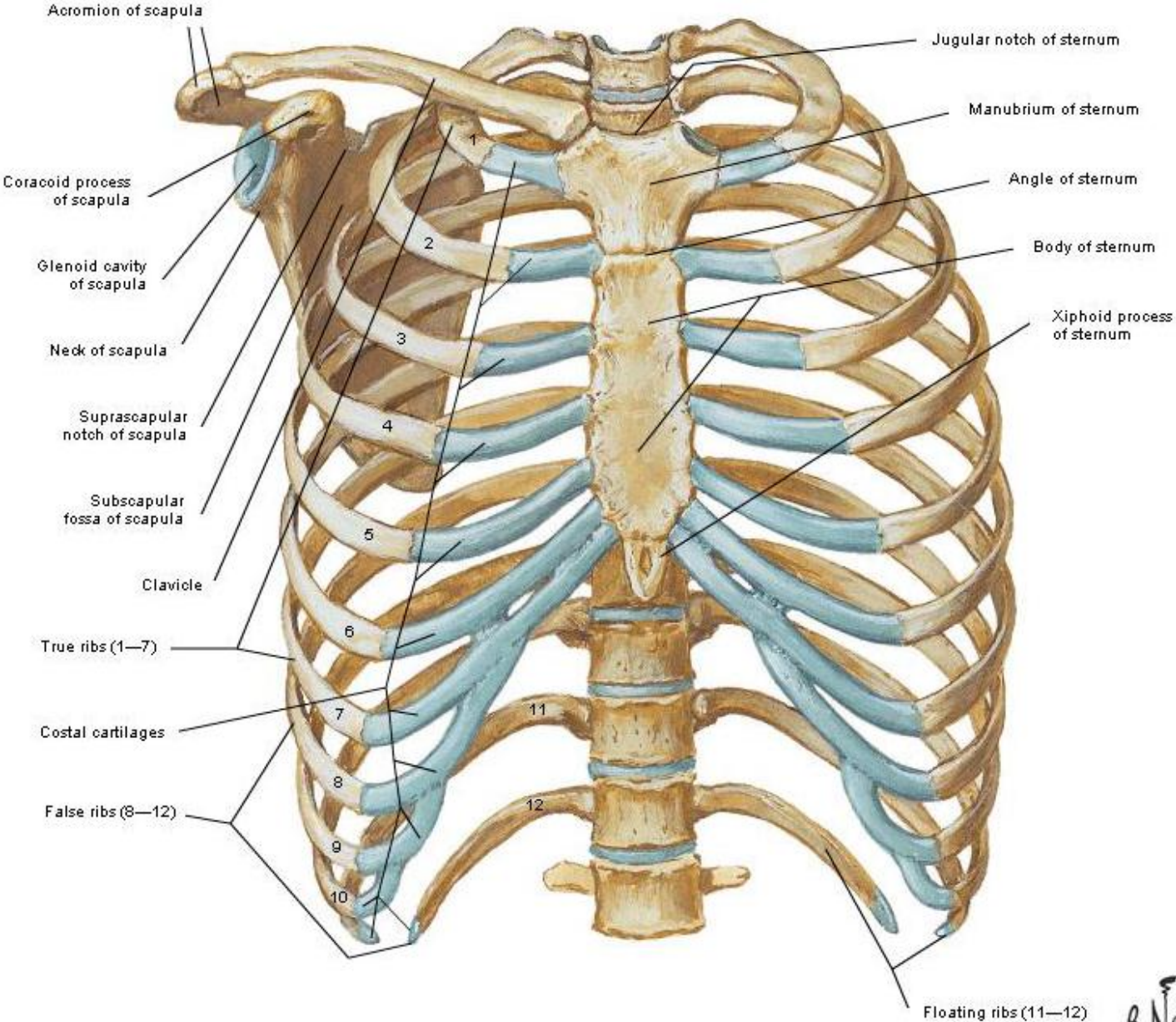
In the name of GOD





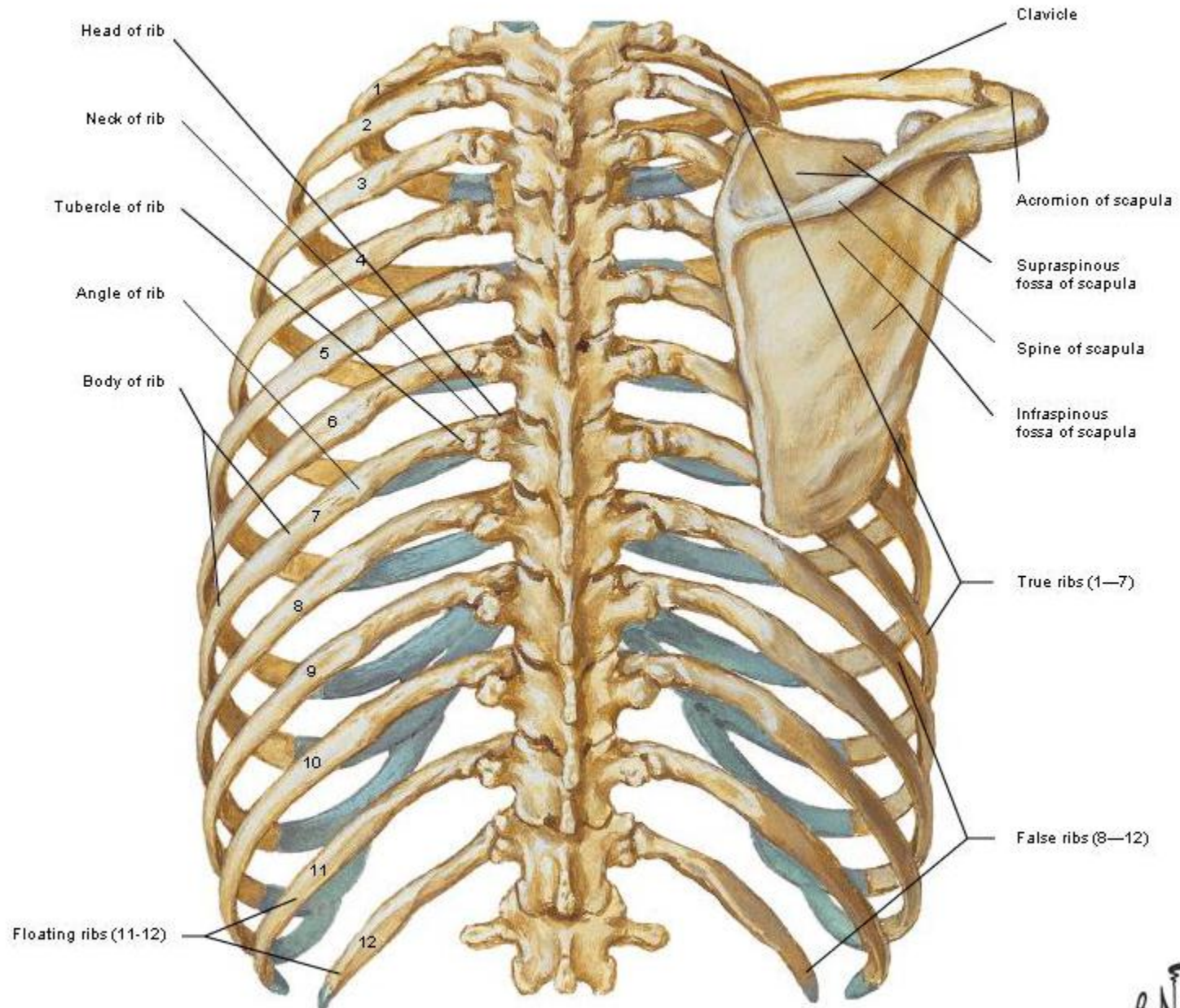
Bony Framework of Thorax

Anterior view

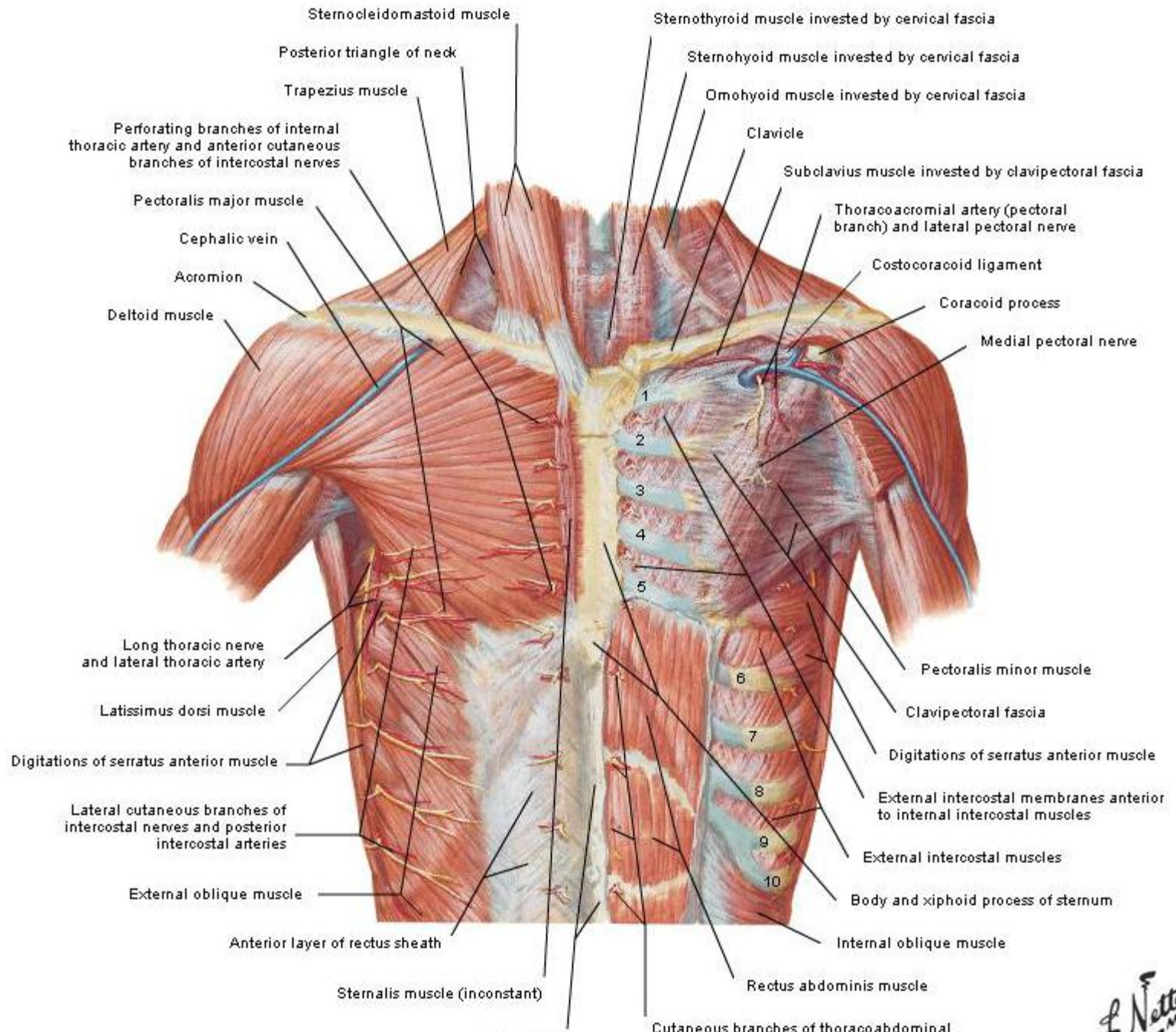


Bony Framework of Thorax

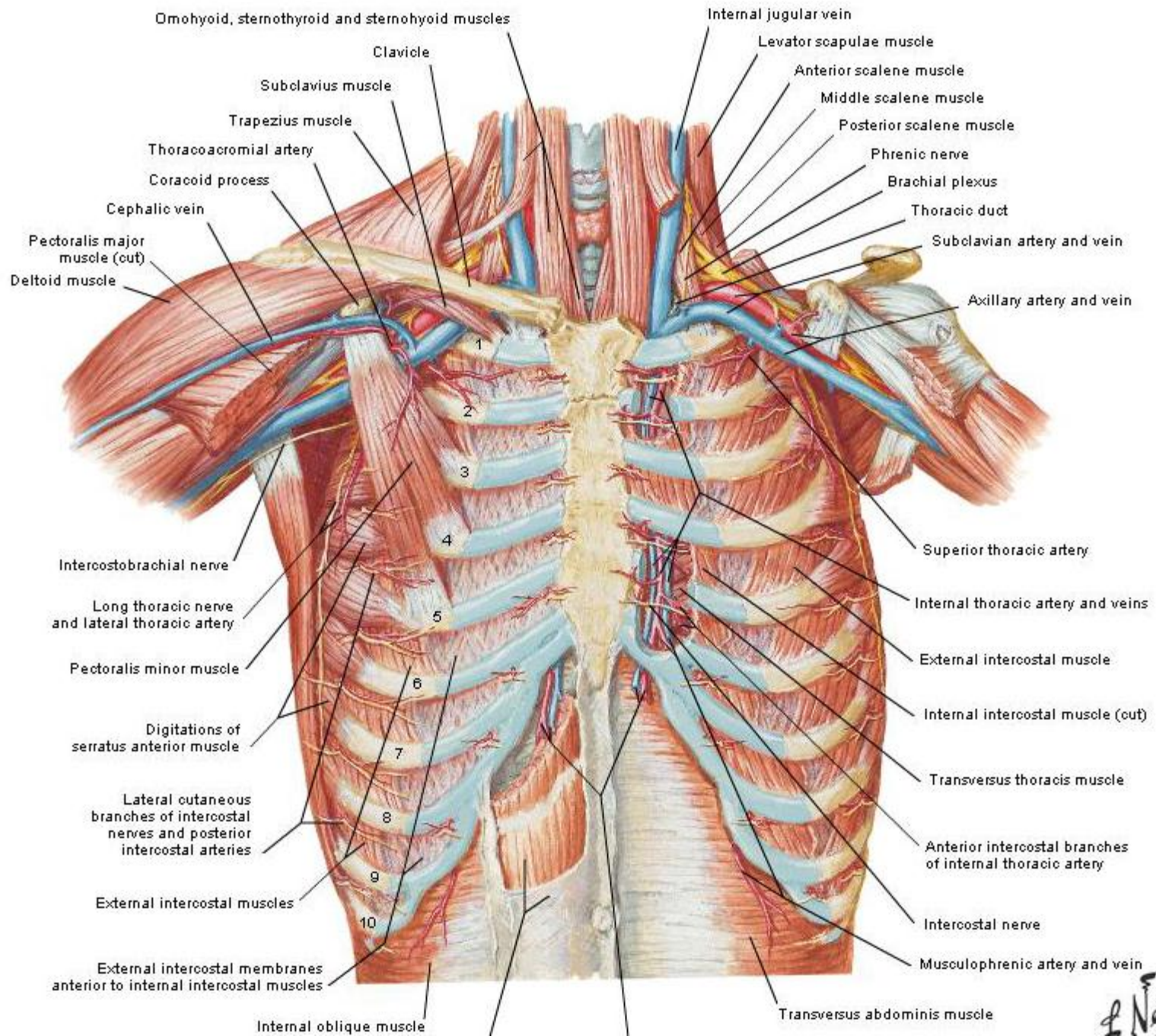
Posterior View



Anterior Thoracic Wall

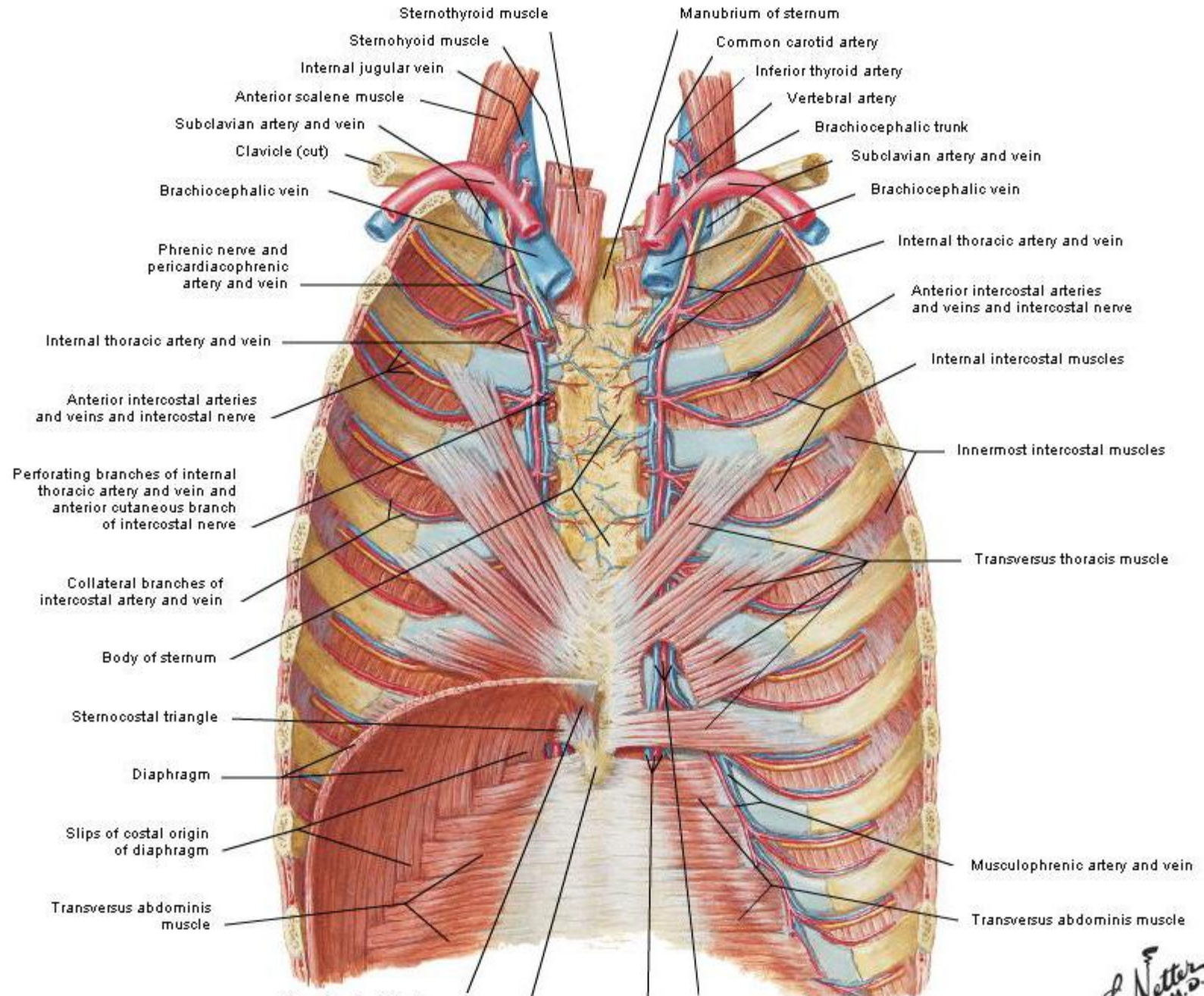


Anterior Thoracic Wall: Deep Dissection



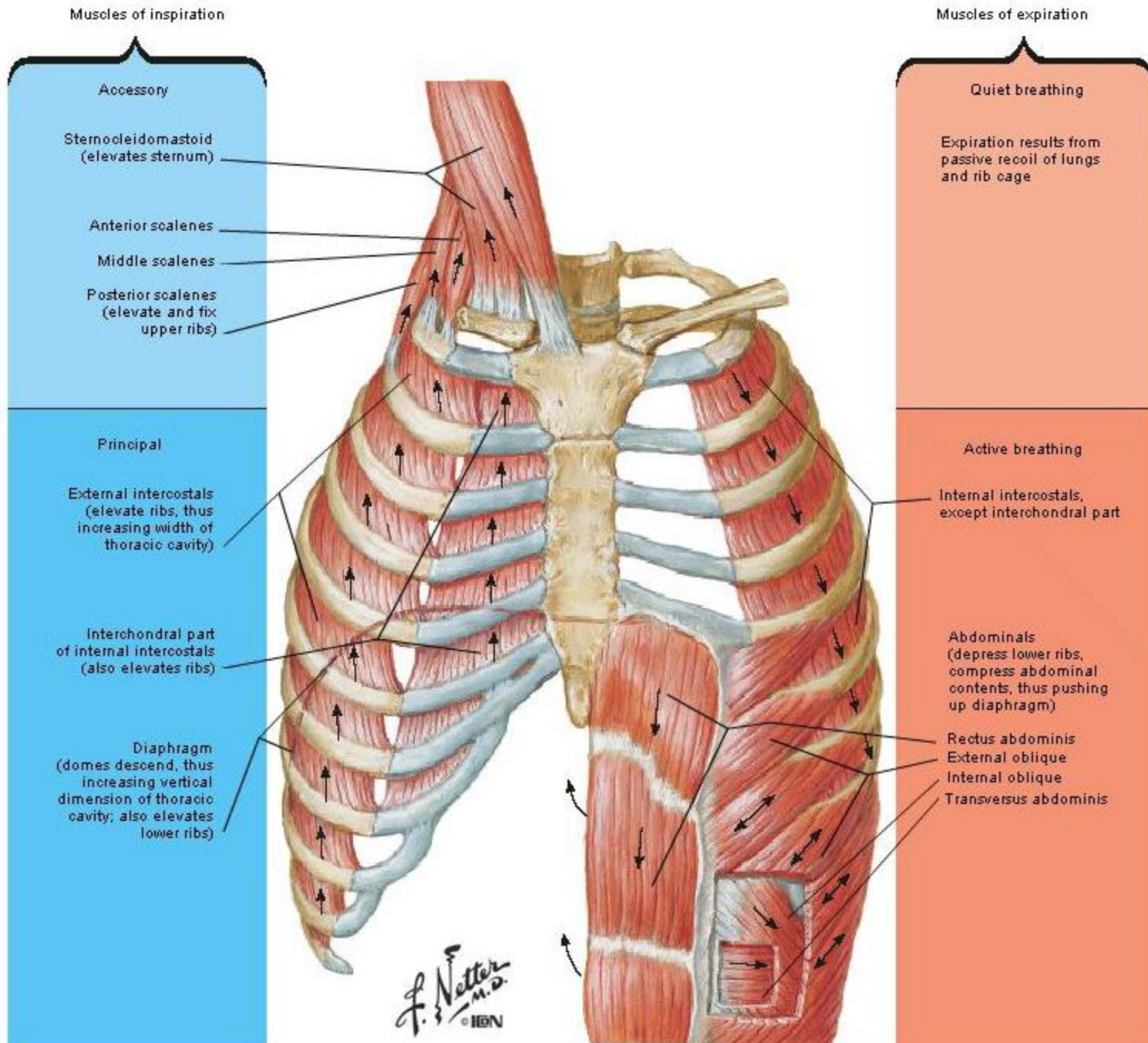
Anterior Thoracic Wall

Internal View



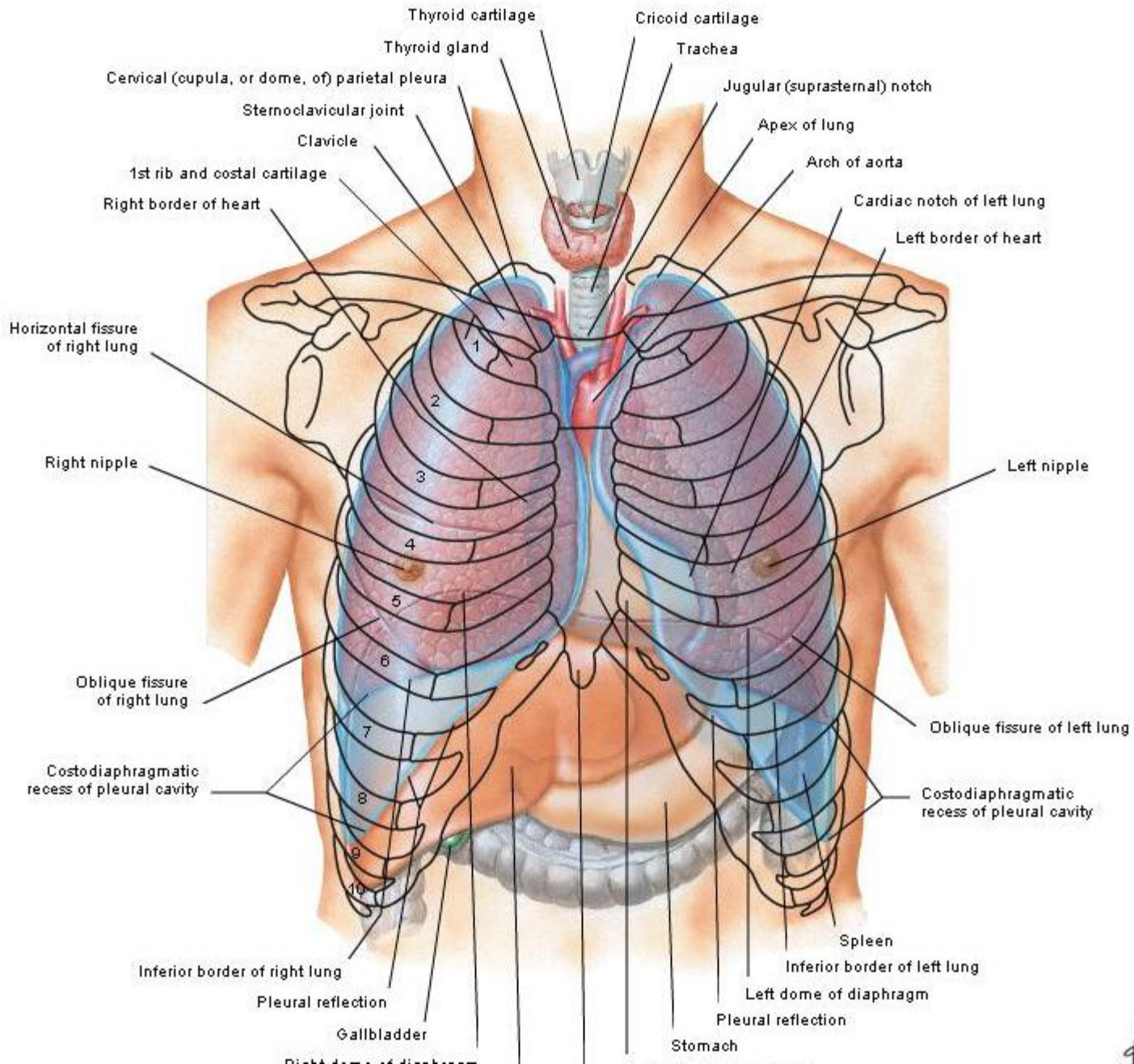
F. Netter M.D.

Muscles of Respiration



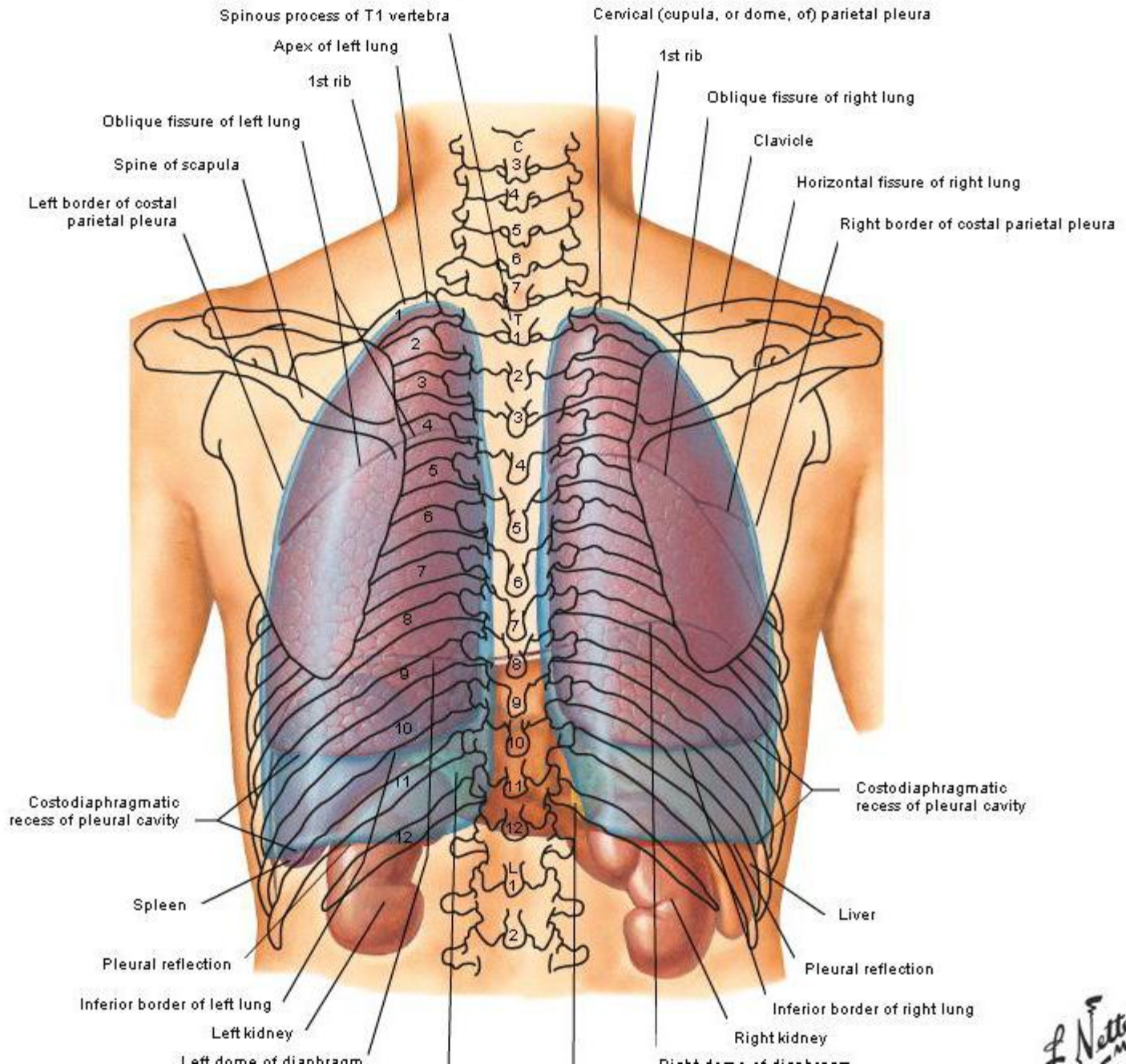
Topography of Lungs

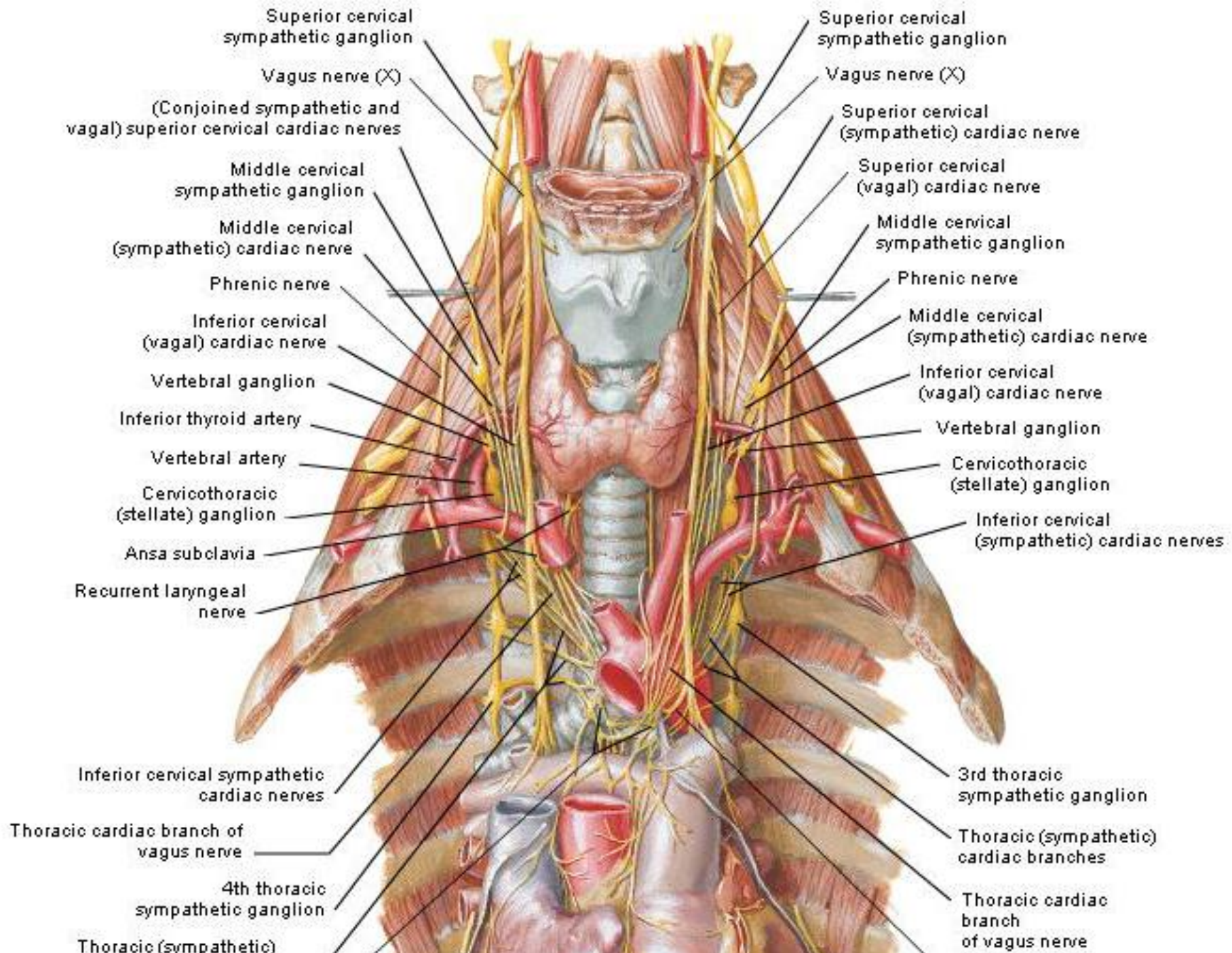
Anterior View



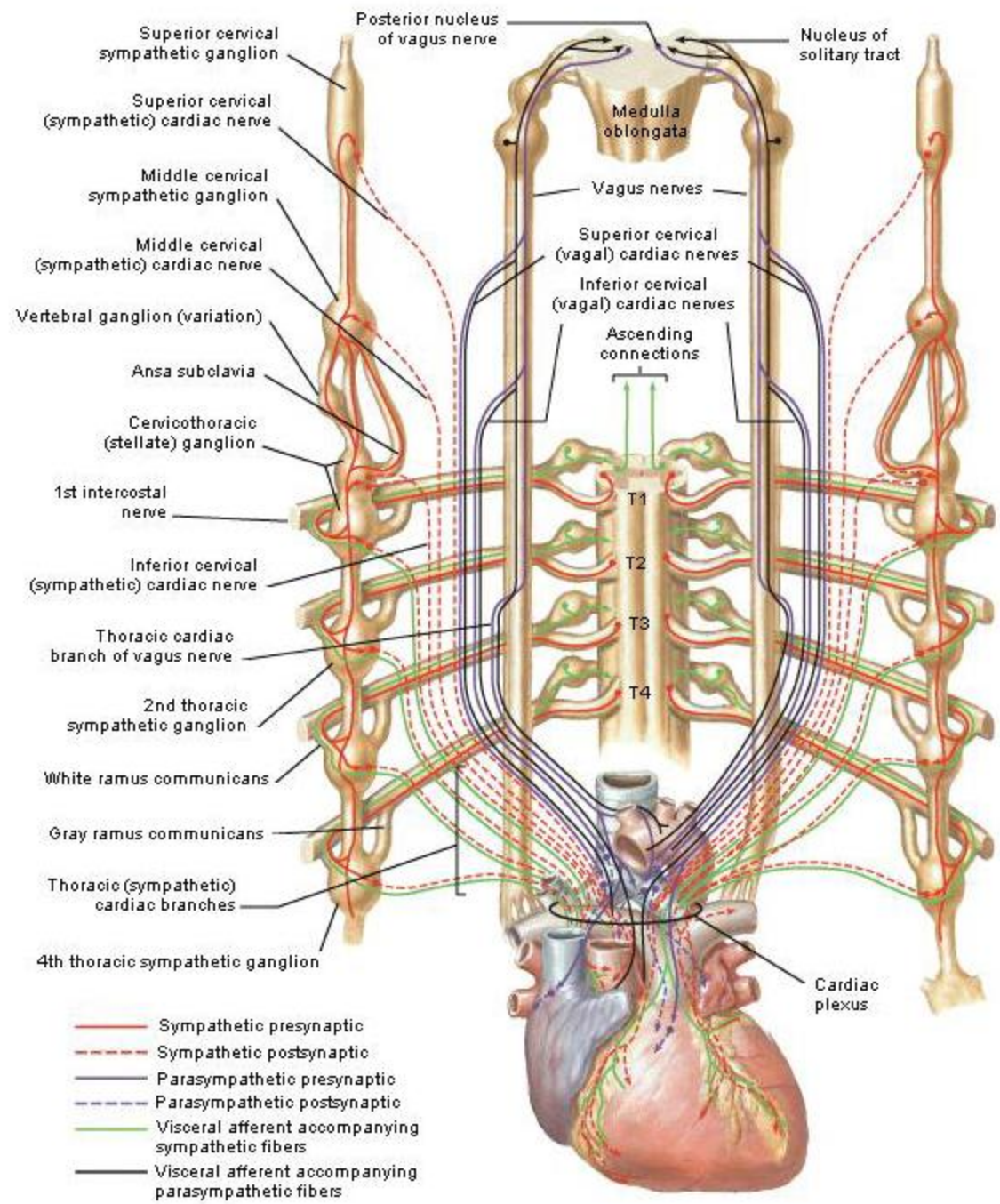
Topography of Lungs

Posterior View

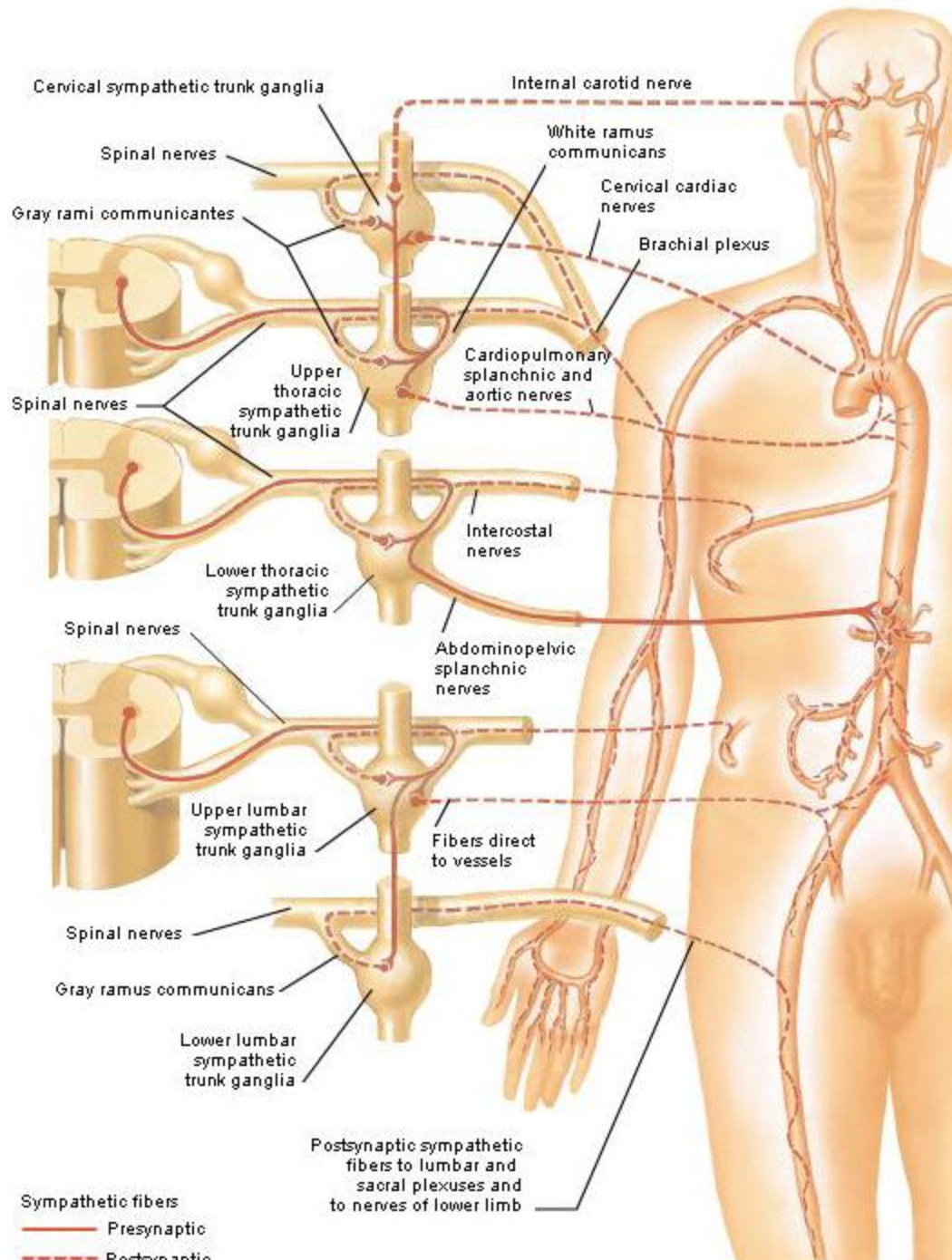




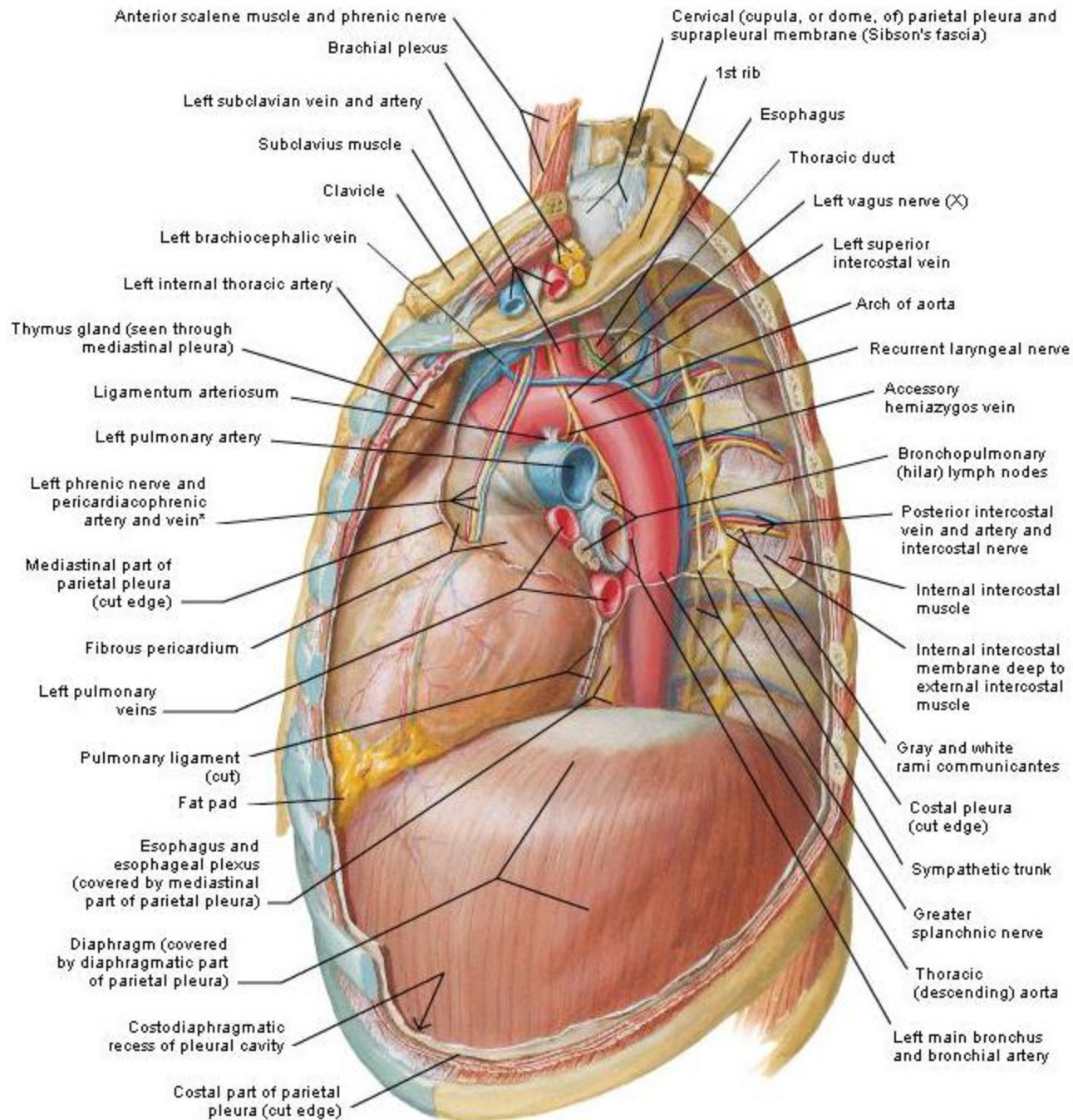
Schema



Innervation of Blood Vessels. Schemata

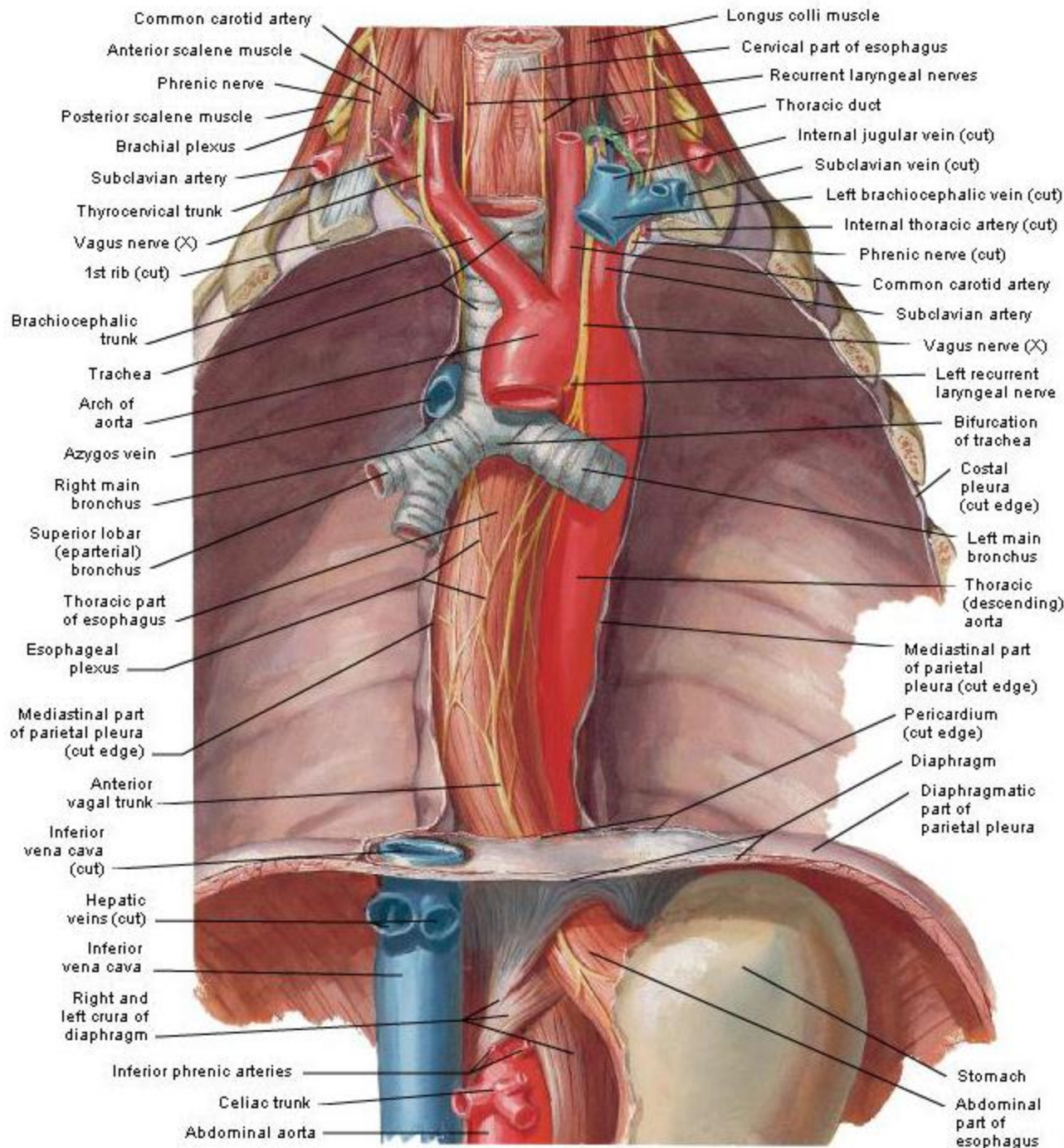


Mediastinum - Left Lateral View



*Nerve and vessels commonly run independently

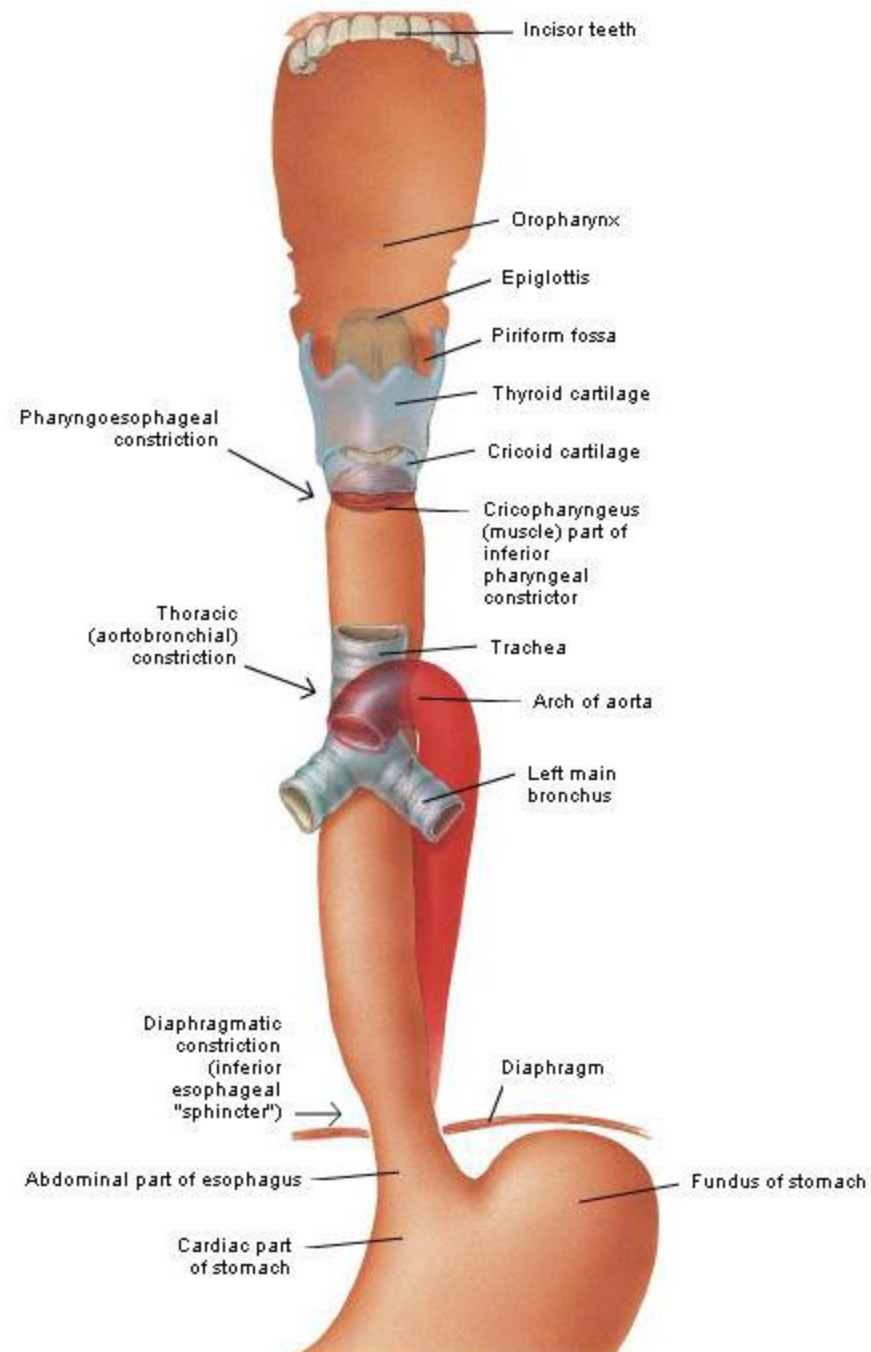
Esophagus in situ



F. Netter M.D.
© IGV

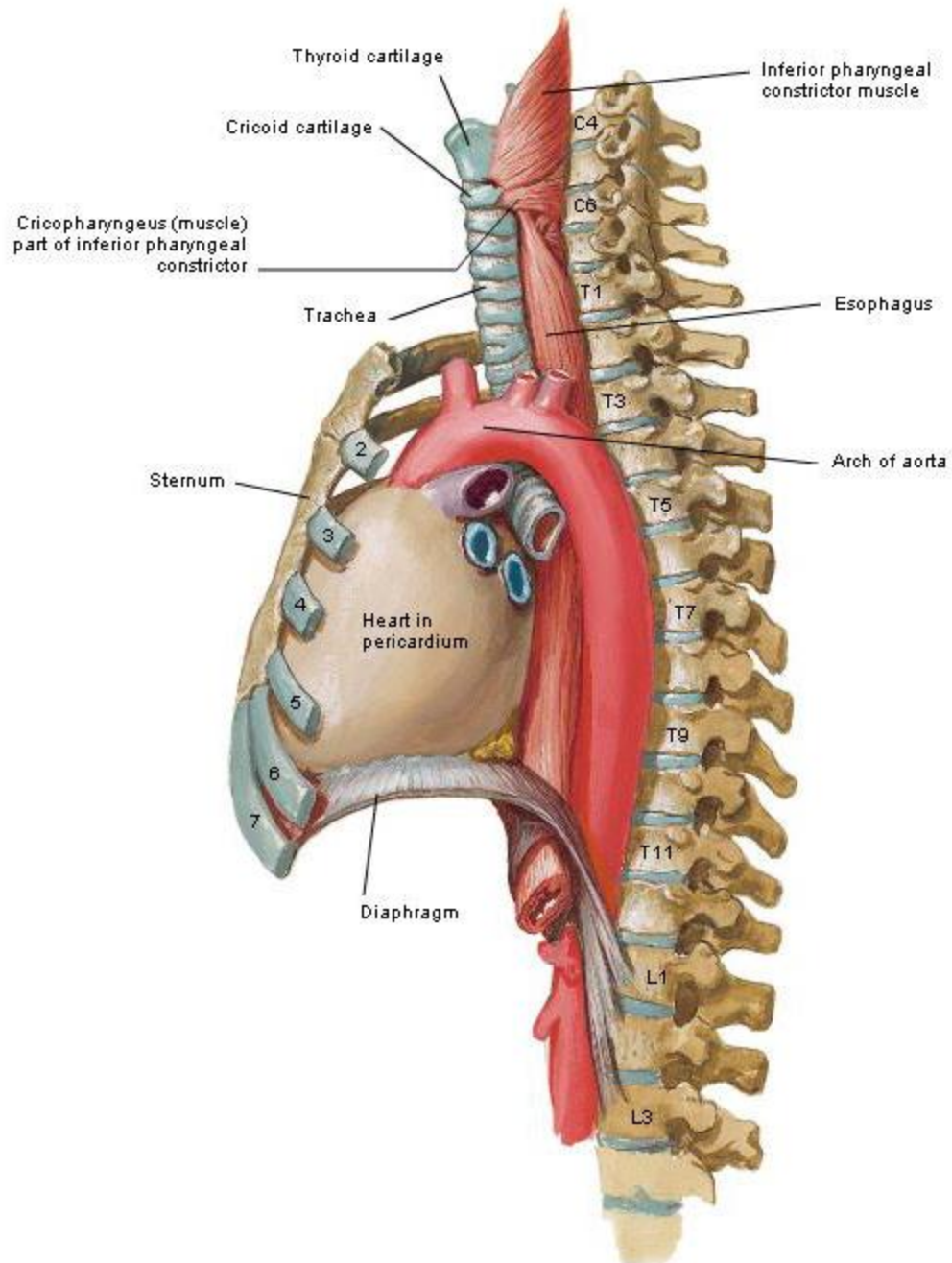
Topography and Constrictions of Esophagus

Schema - Anterior View

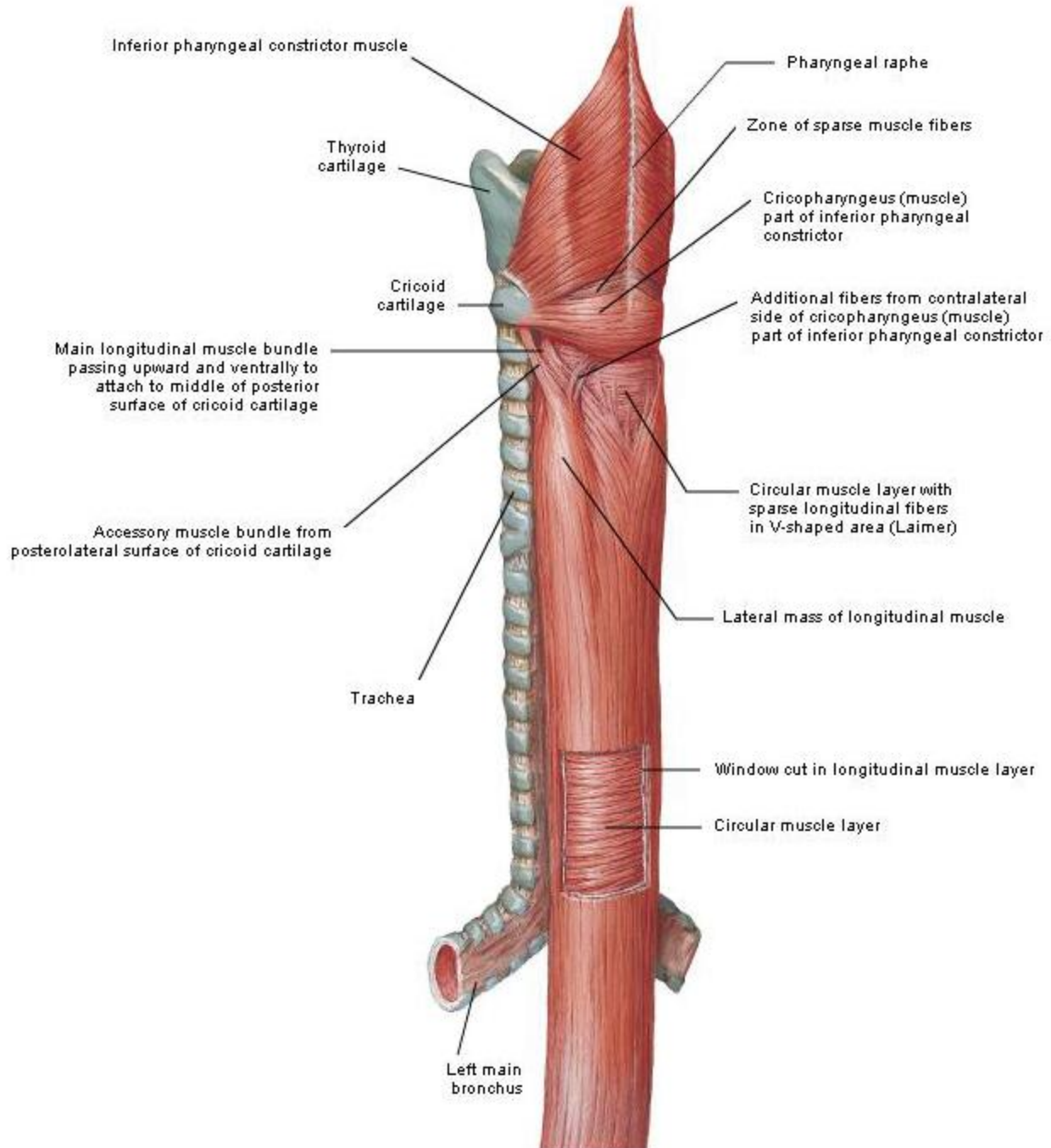


Topography and Constrictors of Esophagus

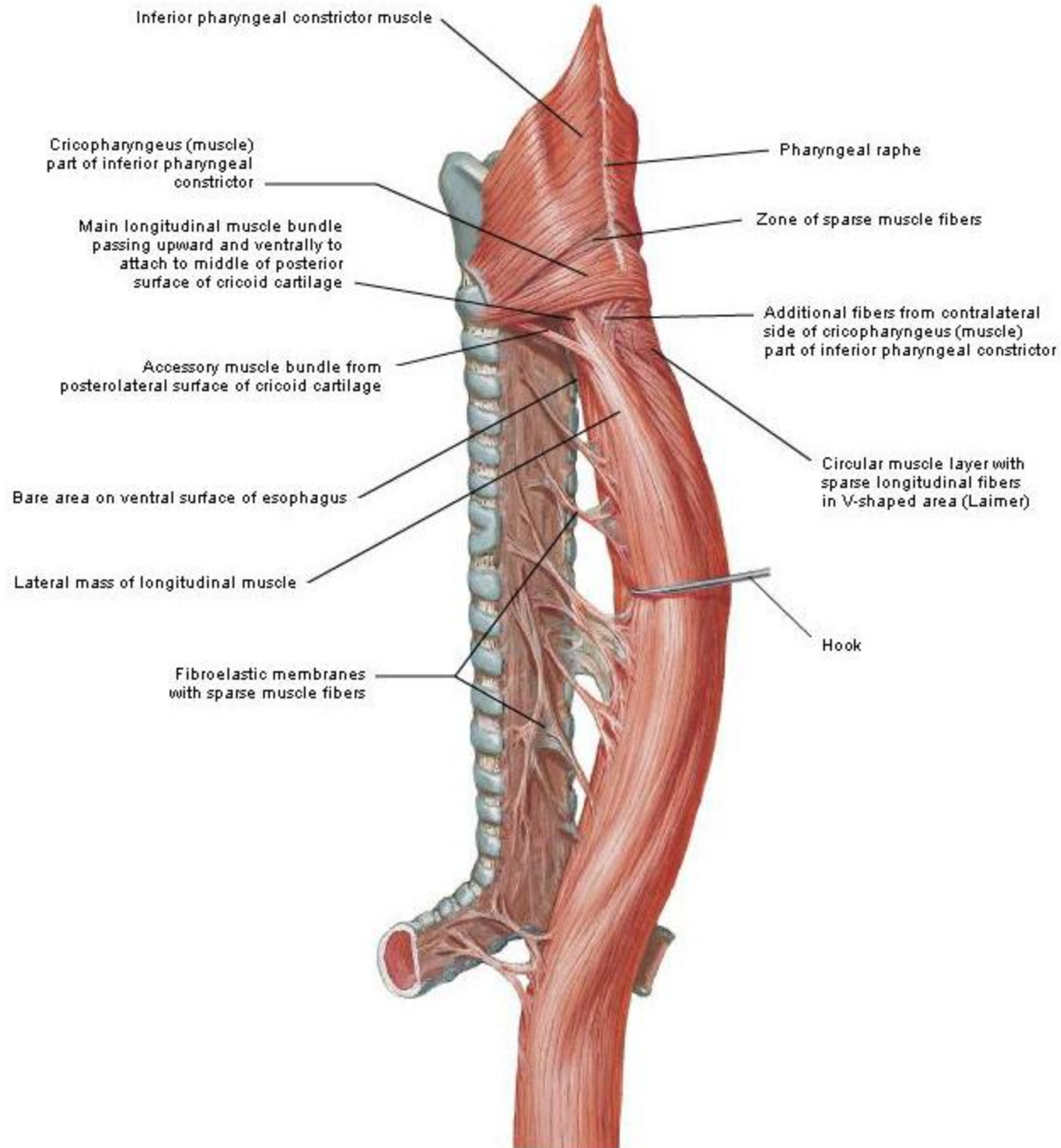
Lateral View



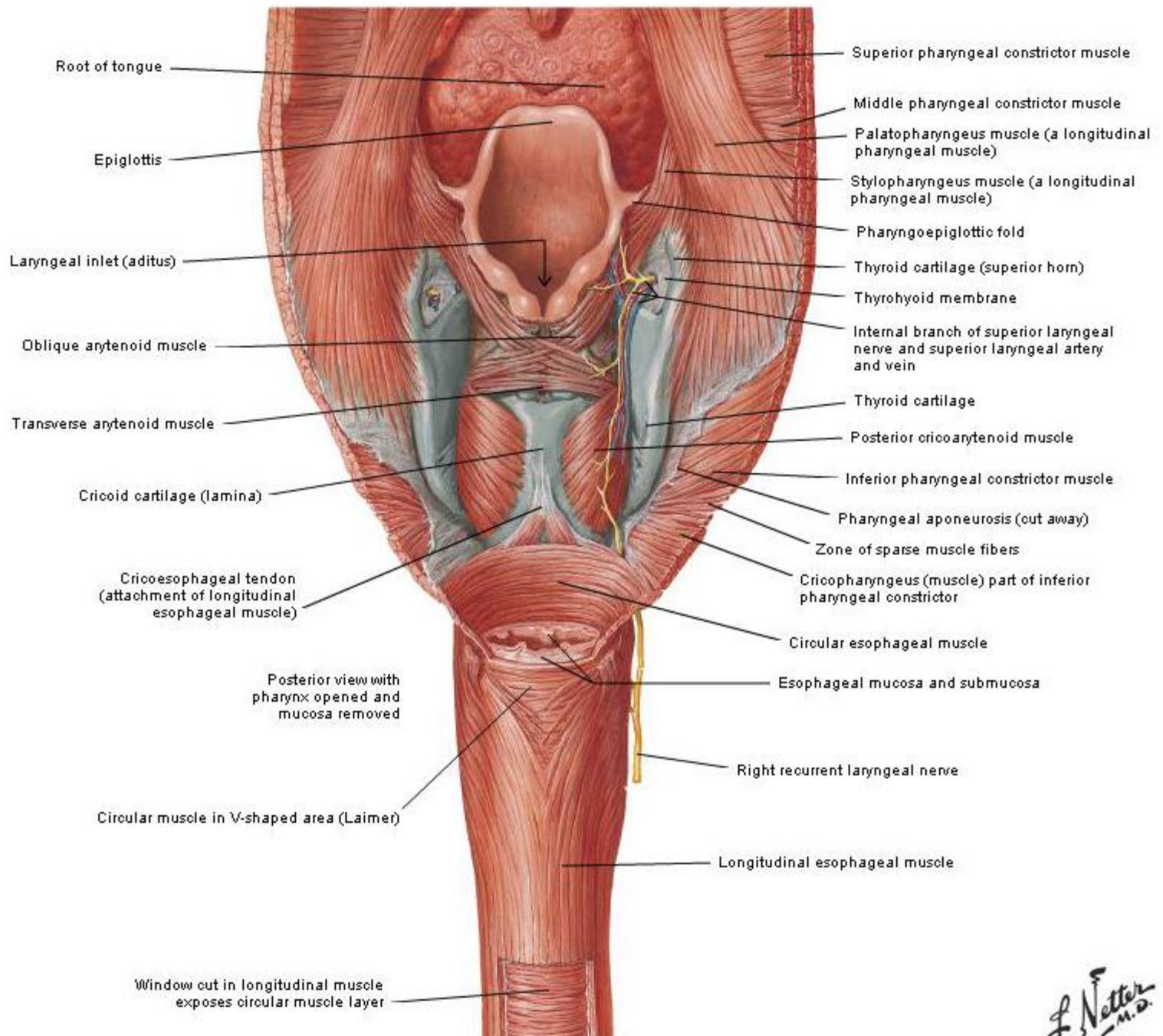
Musculature of Esophagus I



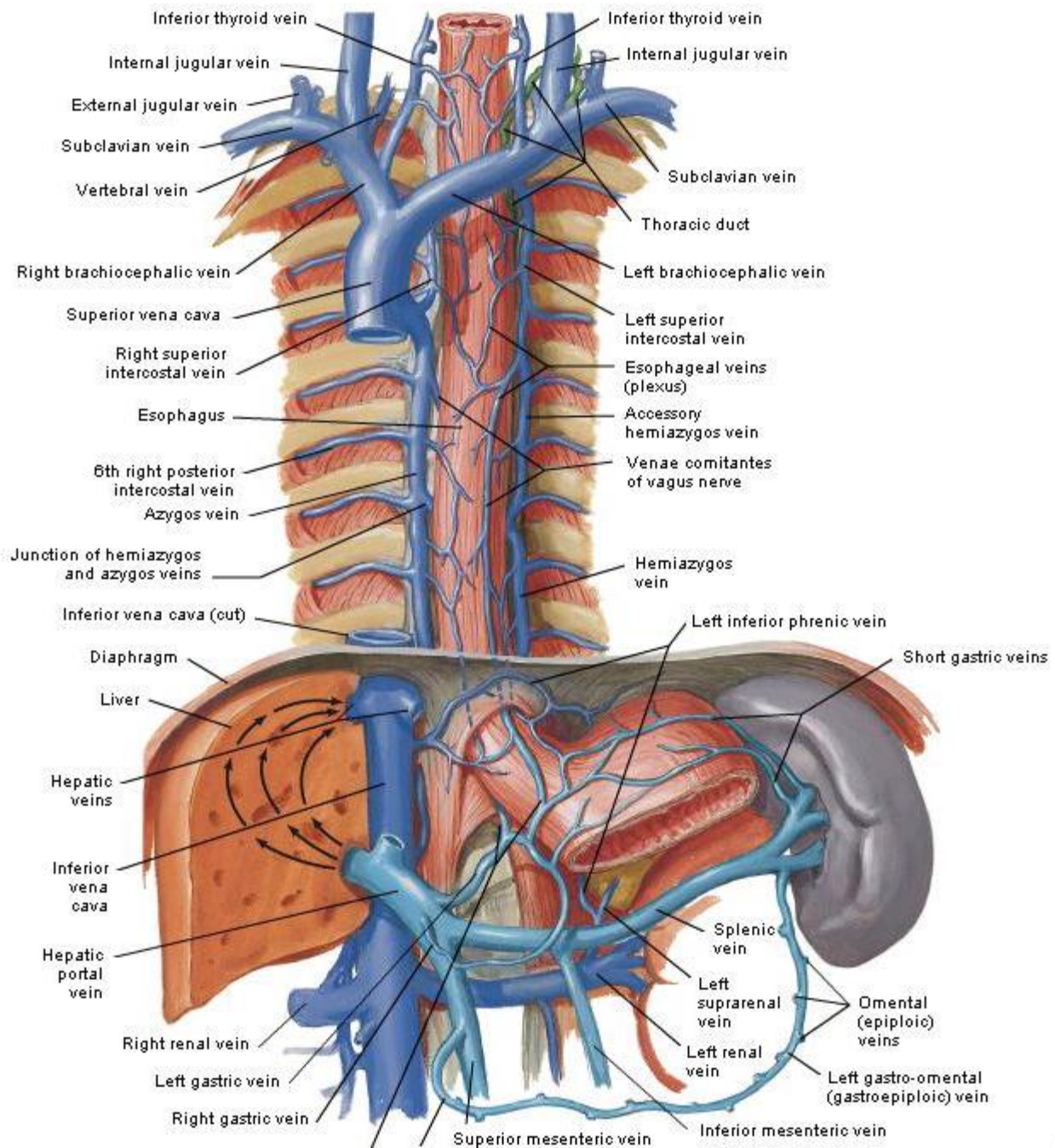
Musculature of Esophagus 2



Pharyngoesophageal Junction

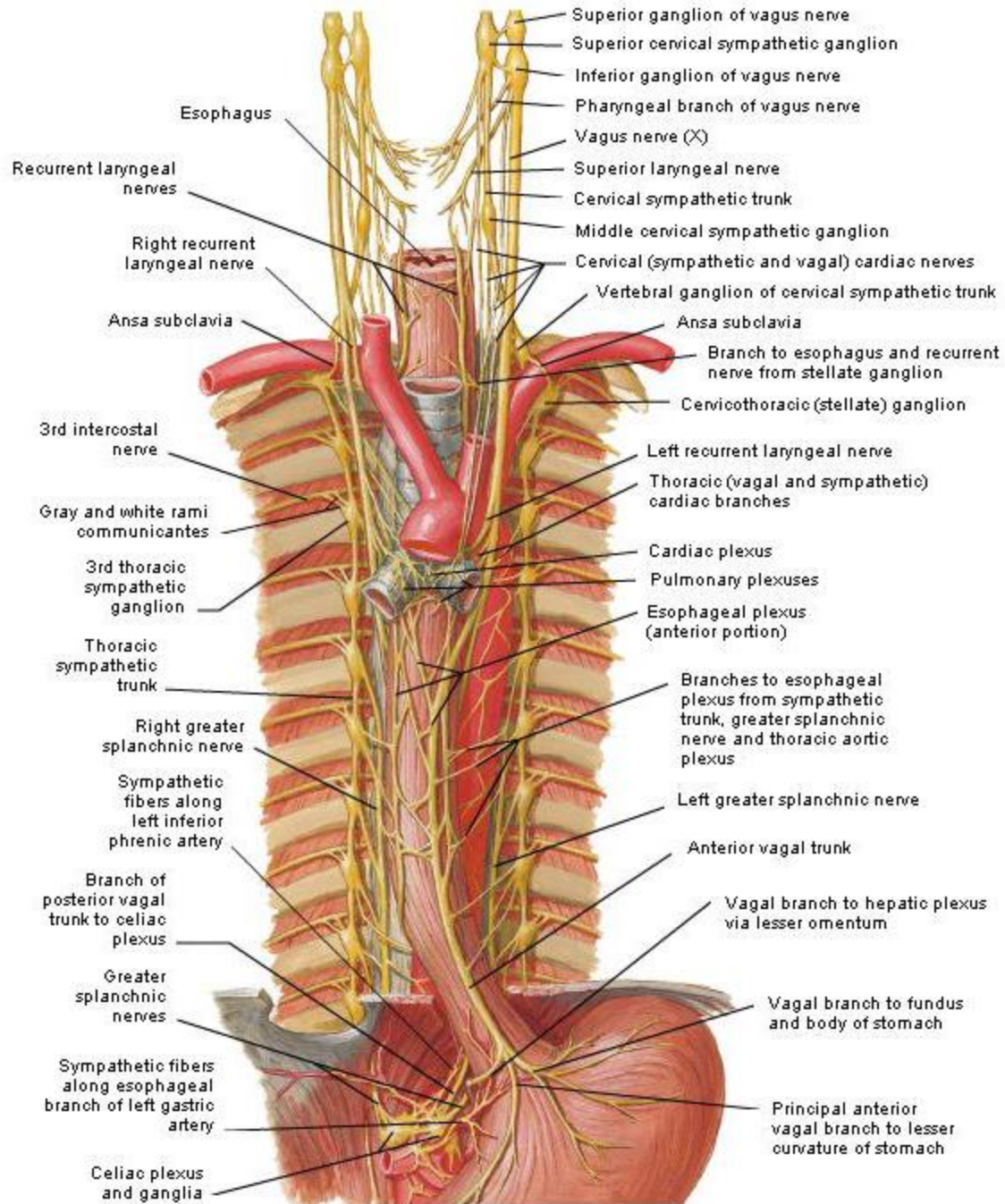


Veins of Esophagus

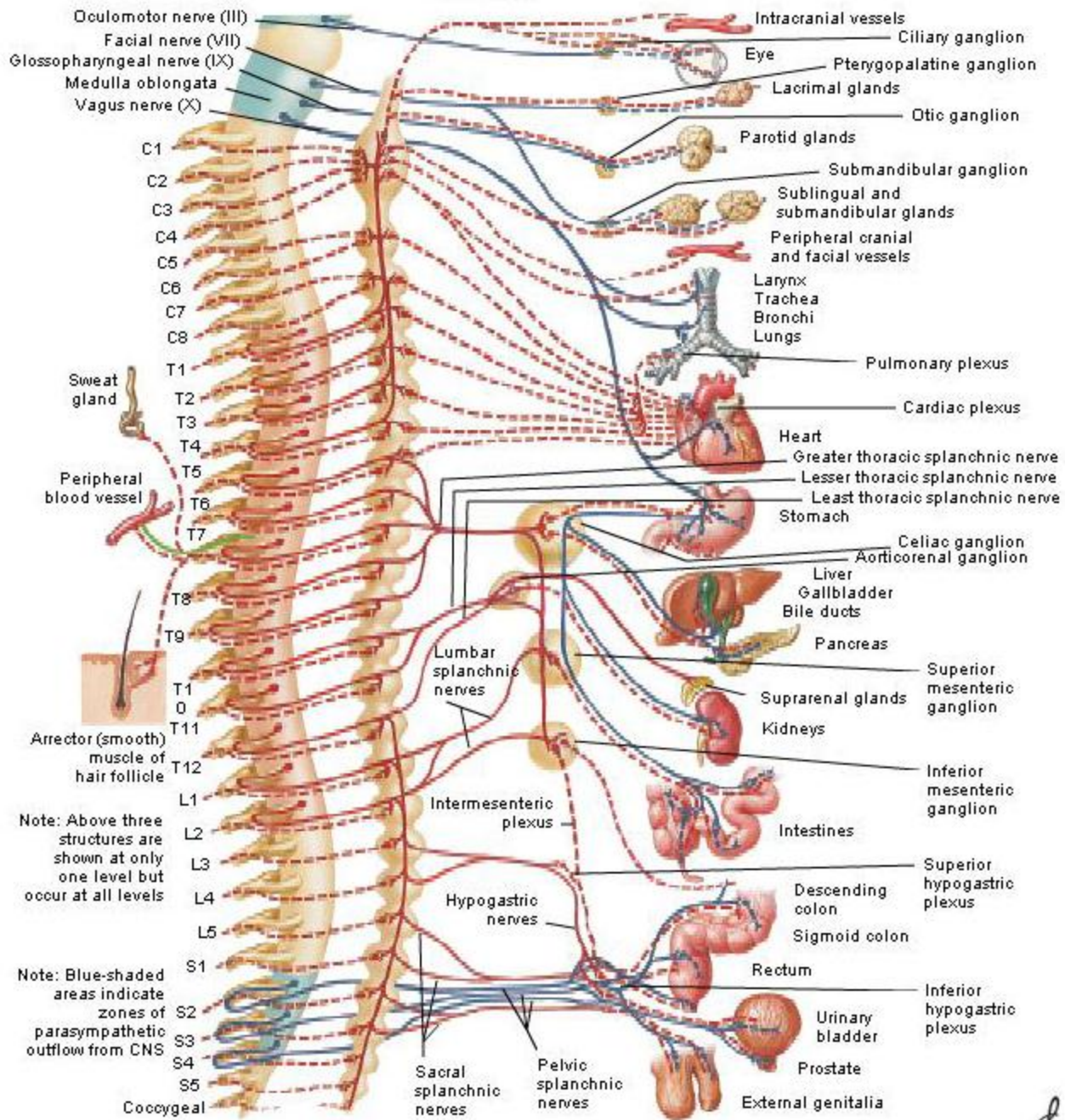


Nerves of Esophagus

Anterior View



Autonomic Nervous System Schema

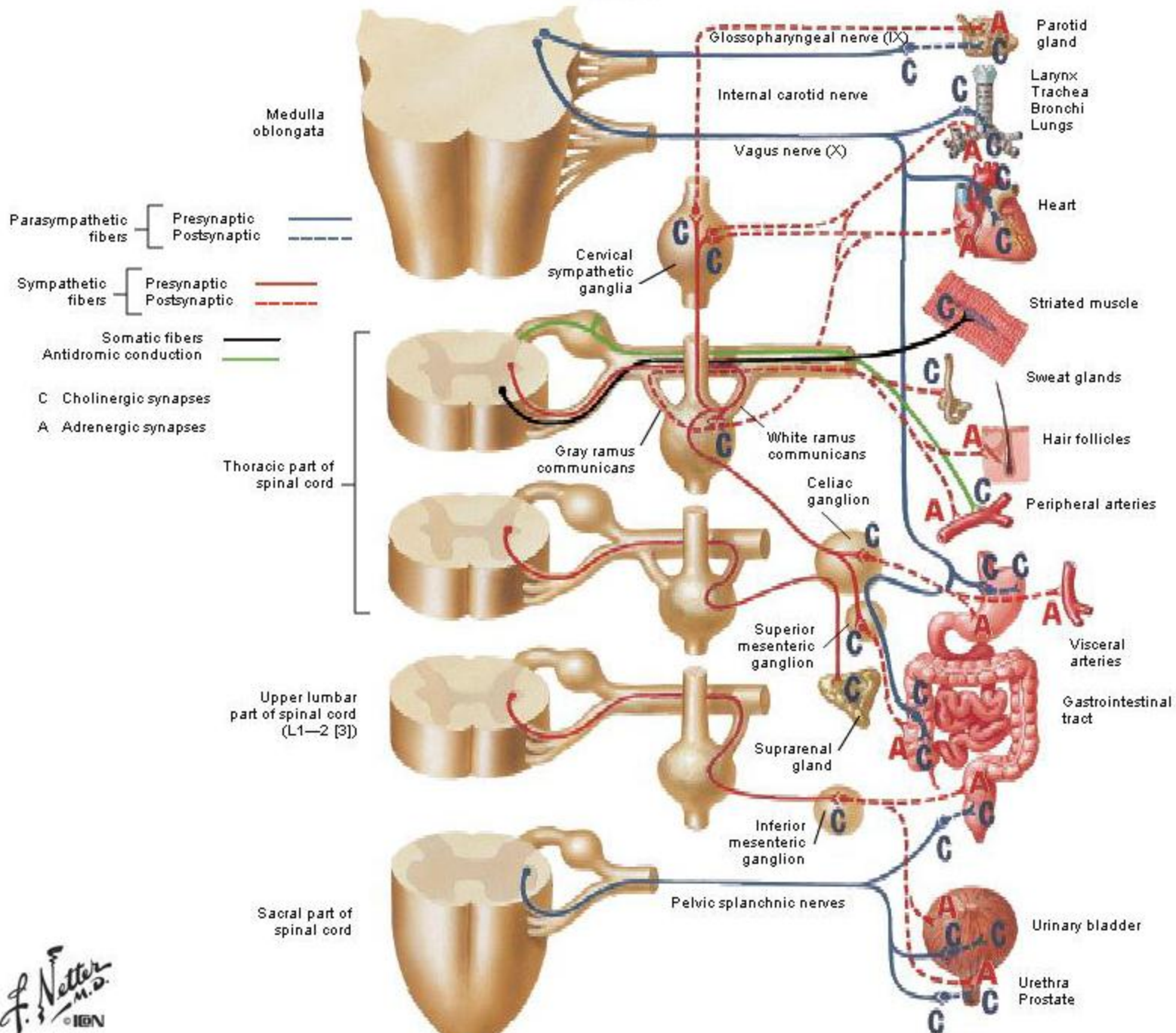


Note: Above three structures are shown at only one level but occur at all levels

Note: Blue-shaded areas indicate zones of parasympathetic outflow from CNS

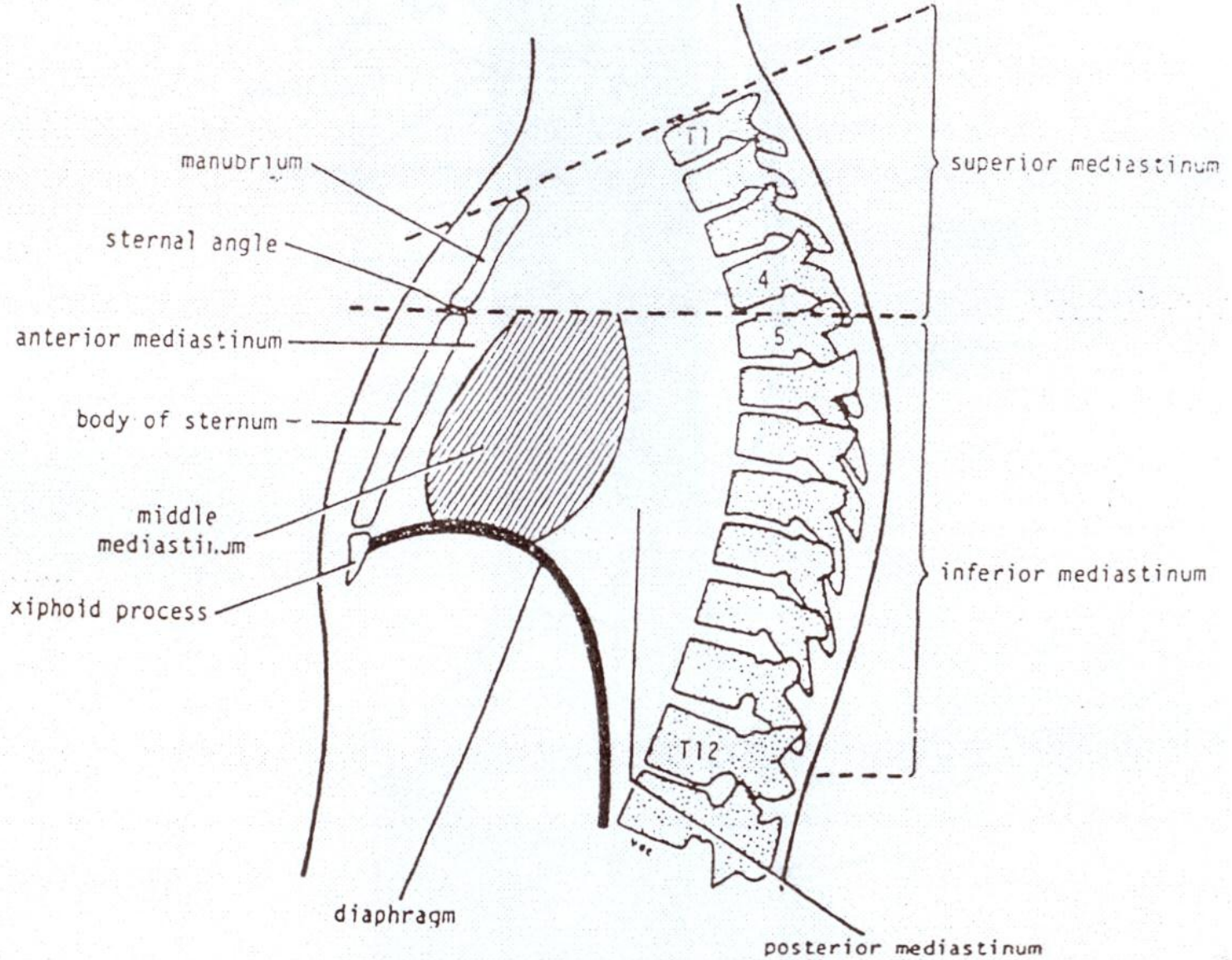
Cholinergic and Adrenergic Synapses

Schema

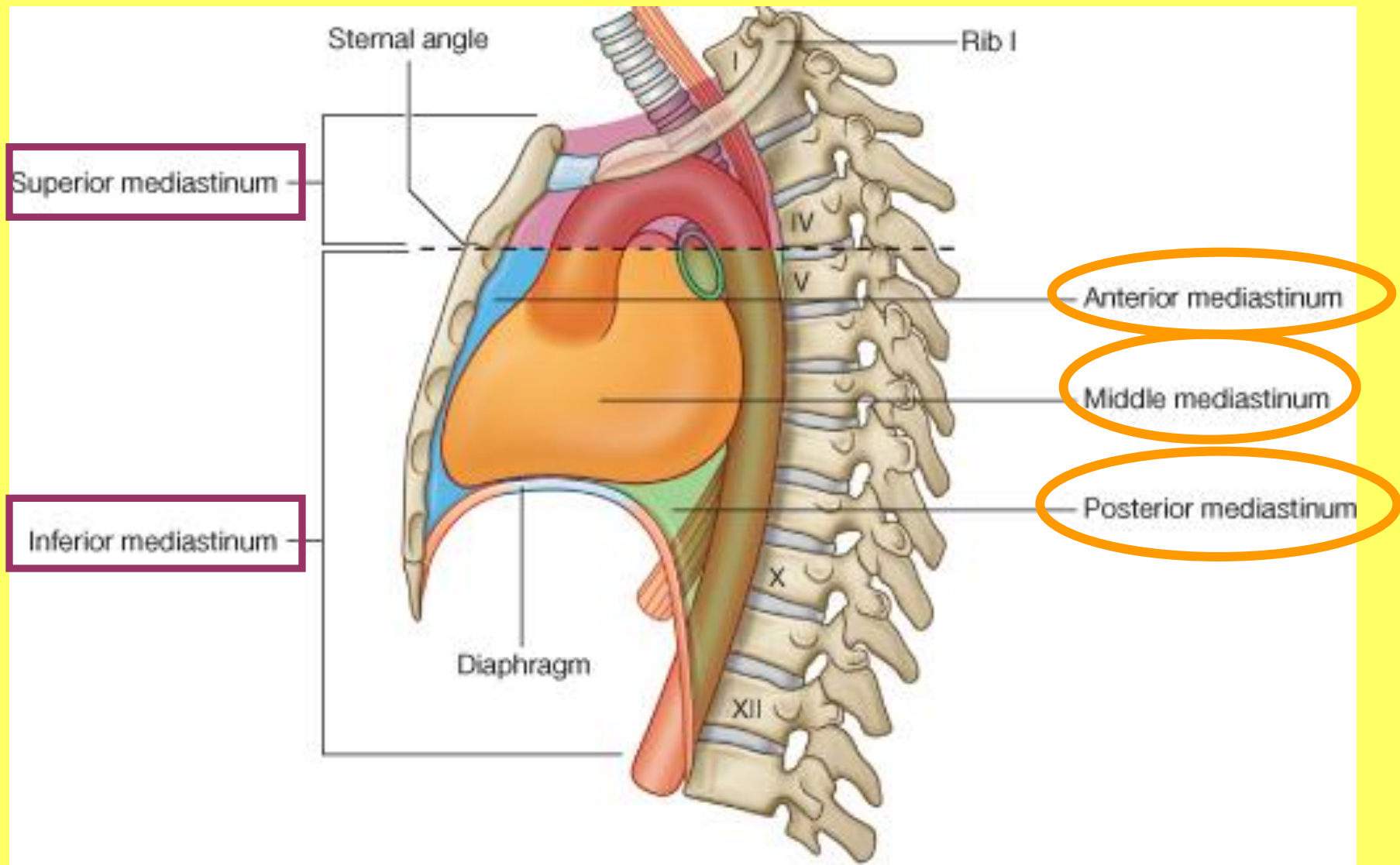




Mediastinum

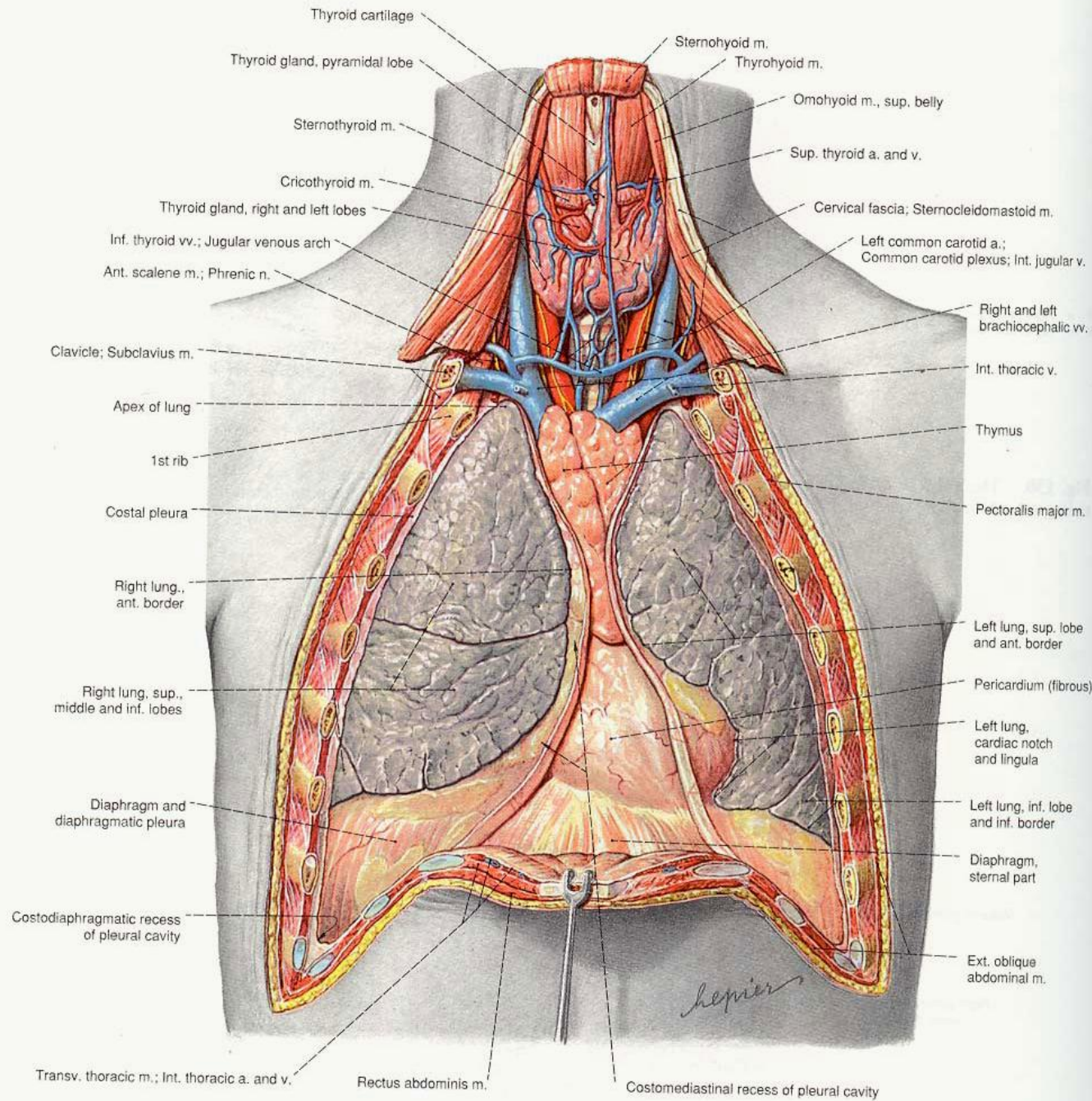


شکل ۲۳: مدياستينوم و تقسيمات آن



Superior mediastinum

- Lower ends of sternohyoid, sternothyroid, longus colli M.
- Thymic remnants
- Internal thoracic arteries and veins
- Brachiocephalic veins
- Upper half of the superior vena cava
- The aortic arch
- Brachiocephalic, left common carotid and subclavian arteries
- The left superior intercostal vein
- The vagus, cardiac, phrenic and left recurrent laryngeal nerve
- The trachea, oesophagus
- The superficial part of cardiac plexus
- Thoracic duct
- Paratracheal, brachiocephalic and tracheobronchial lymph nodes



Anterior mediastinum

- **Loose connective tissue**
- **The sternopericardial ligaments**
- **The mediastinal branches of the internal thoracic artery**
- **Part of thymus gland or its degenerated remains**

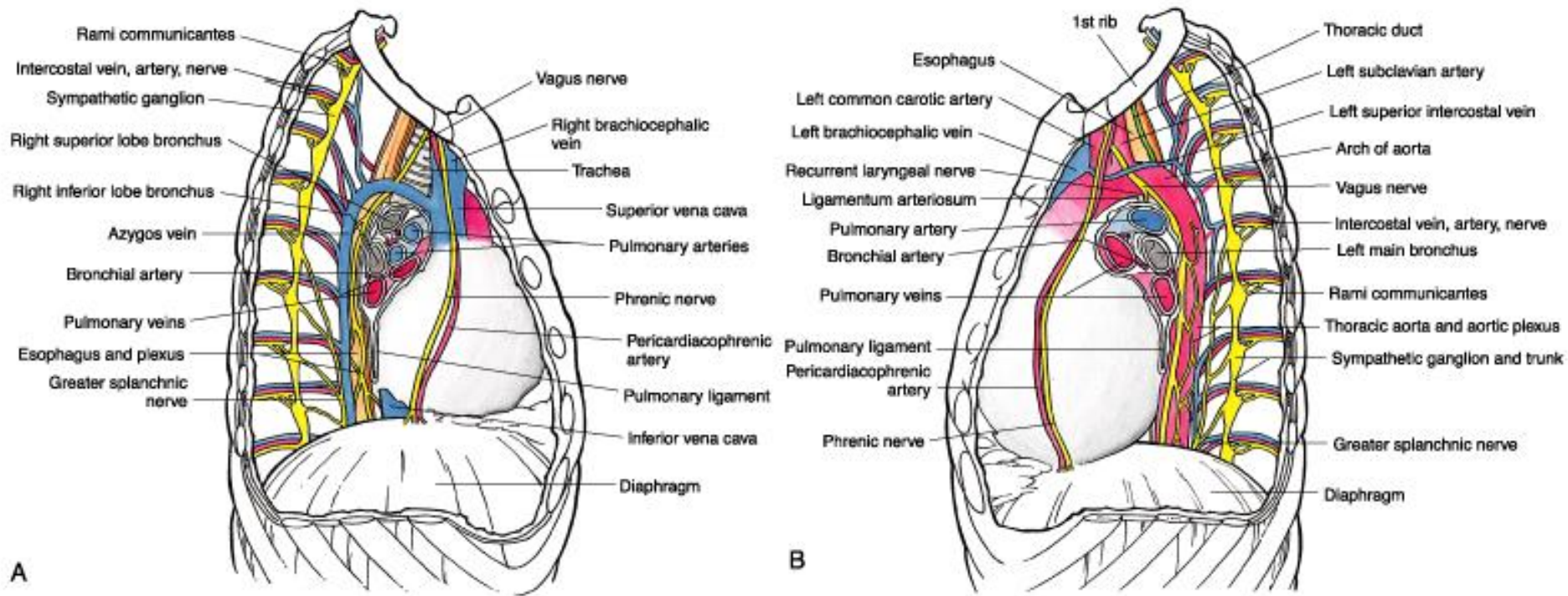


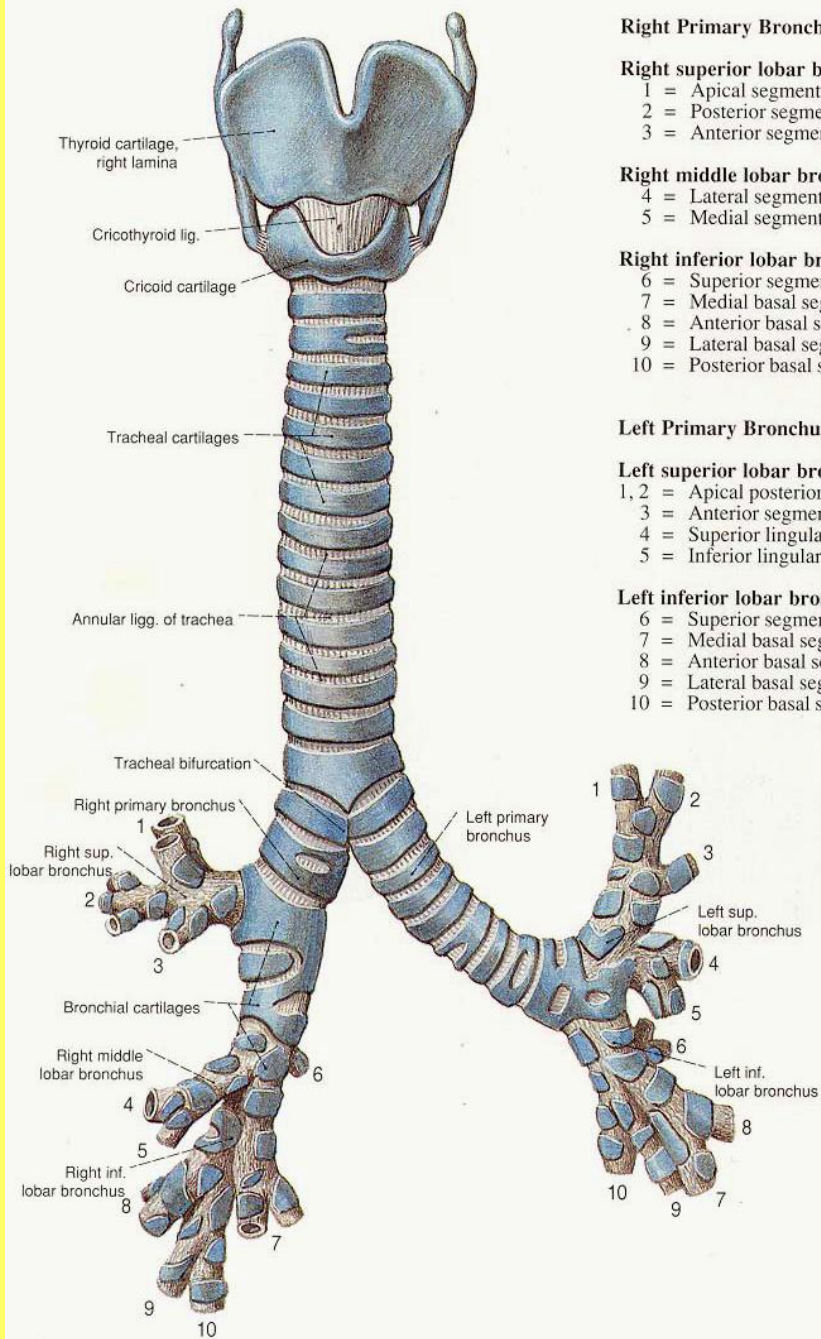
FIGURE 2.34 Drawings of dissections of the mediastinum. **A.** Right side. **B.** Left side.

Middle mediastinum

- **The pericardium, heart, ascending aorta**
- **The lower half of superior vena cava**
- **The terminal azygos vein**
- **Tracheal bifurcation and both main bronchi**
- **The pulmonary trunk and right, left pulmonary arteries, both pulmonary veins**
- **The phrenic nerves**
- **The deep part of cardiac plexus**
- **The tracheobronchial lymph nodes**

Middle mediastinum

- **The pericardium, heart, ascending aorta**
- **The lower half of superior vena cava**
- **The terminal azygos vein**
- **Tracheal bifurcation and both main bronchi**
- **The pulmonary trunc and right, left pulmonary arteries, both pulmonary veins**
- **The phrenic nerves**
- **The deep part of cardiac plexus**
- **The tracheobronchial lymph nodes**



Right Primary Bronchus

Right superior lobar bronchus

- 1 = Apical segmental bronchus (B¹)
- 2 = Posterior segmental bronchus (B²)
- 3 = Anterior segmental bronchus (B³)

Right middle lobar bronchus

- 4 = Lateral segmental bronchus (B⁴)
- 5 = Medial segmental bronchus (B⁵)

Right inferior lobar bronchus

- 6 = Superior segmental bronchus (B⁶)
- 7 = Medial basal segmental bronchus (B⁷)
- 8 = Anterior basal segmental bronchus (B⁸)
- 9 = Lateral basal segmental bronchus (B⁹)
- 10 = Posterior basal segmental bronchus (B¹⁰)

Left Primary Bronchus

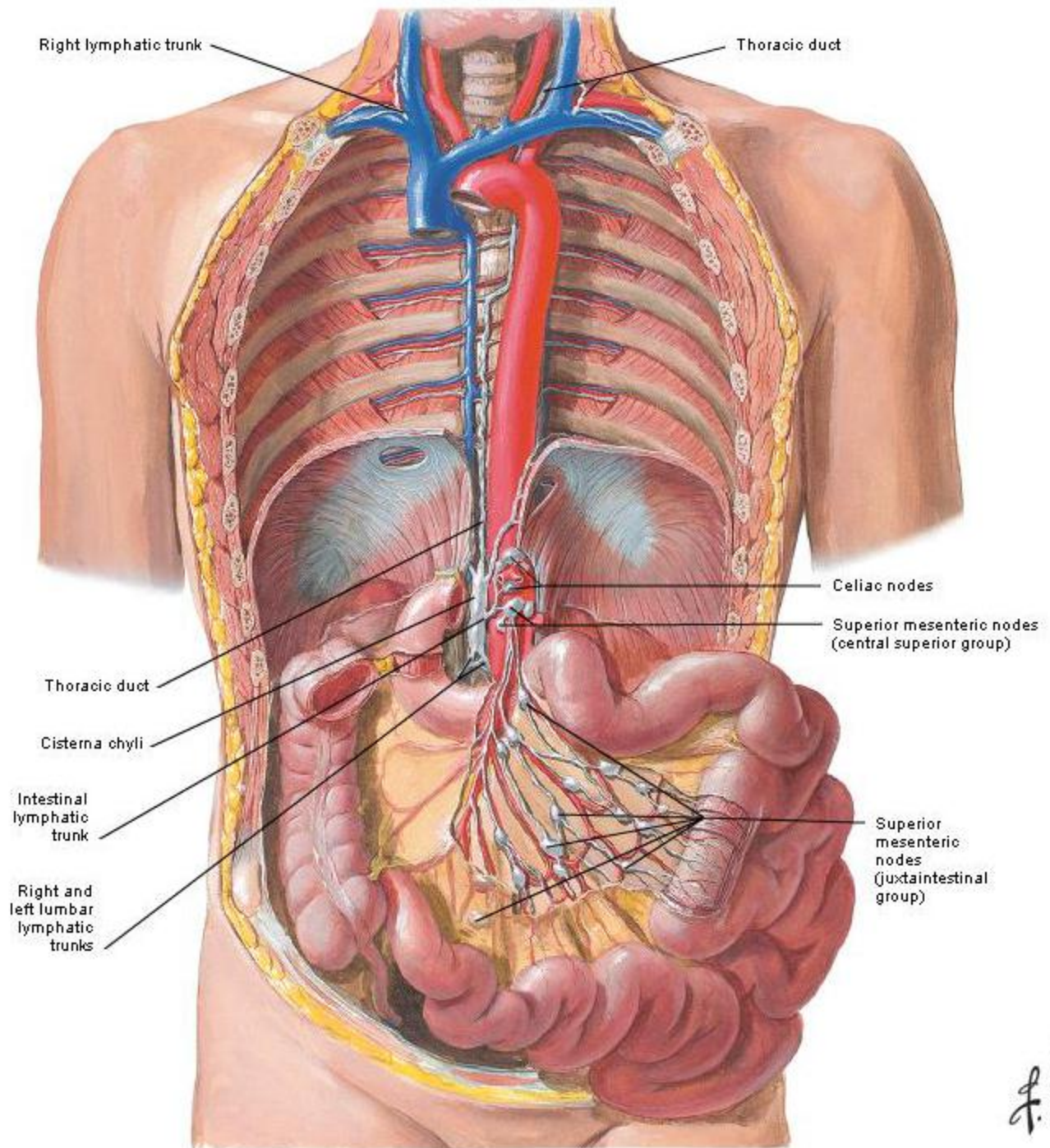
Left superior lobar bronchus

- 1, 2 = Apical posterior segmental bronchus (B¹, B²)
- 3 = Anterior segmental bronchus (B³)
- 4 = Superior lingular segmental bronchus (B⁴)
- 5 = Inferior lingular segmental bronchus (B⁵)

Left inferior lobar bronchus

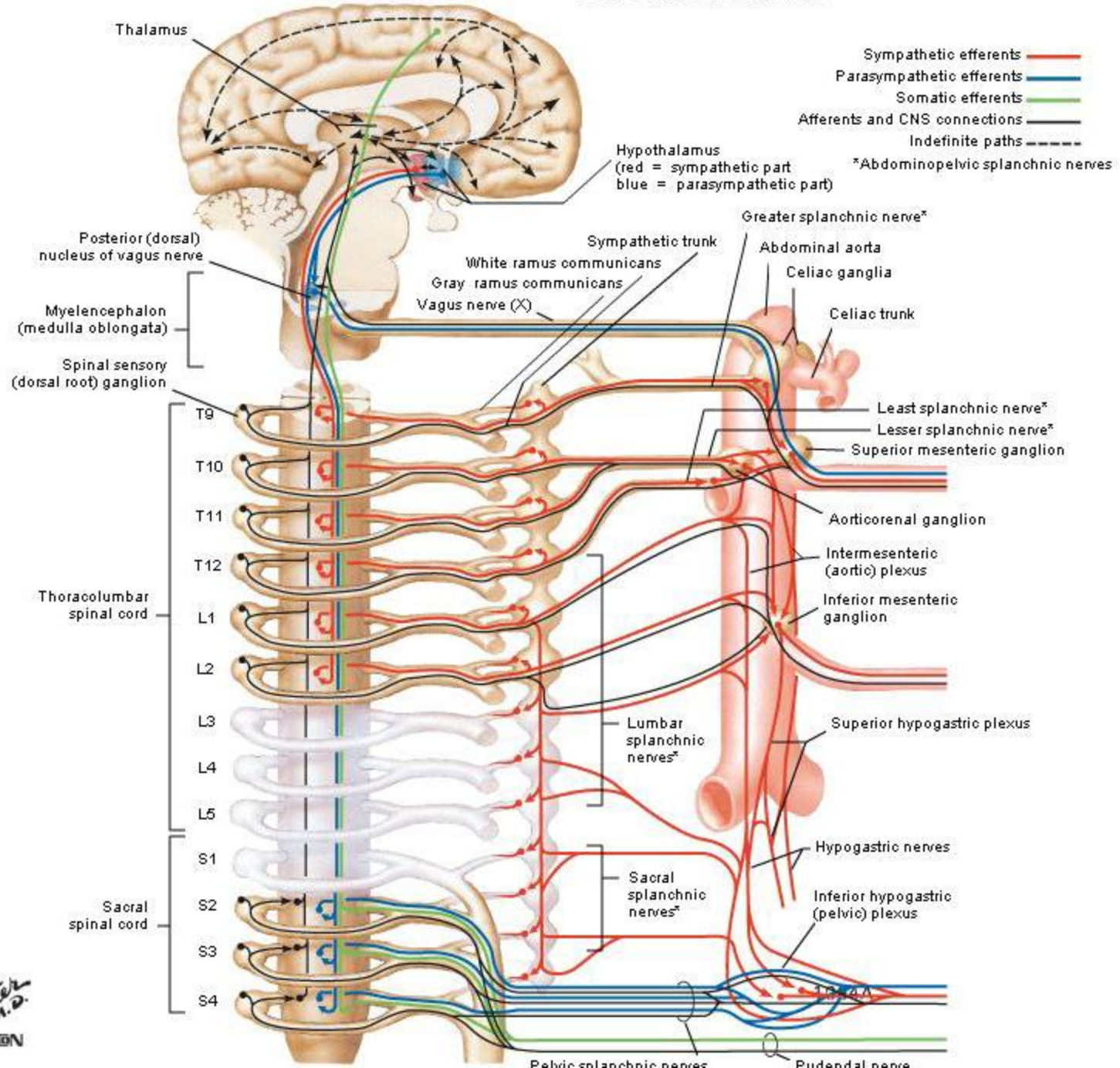
- 6 = Superior segmental bronchus (B⁶)
- 7 = Medial basal segmental bronchus (B⁷)
- 8 = Anterior basal segmental bronchus (B⁸)
- 9 = Lateral basal segmental bronchus (B⁹)
- 10 = Posterior basal segmental bronchus (B¹⁰)

Lymph Vessels and Nodes of Small Intestine

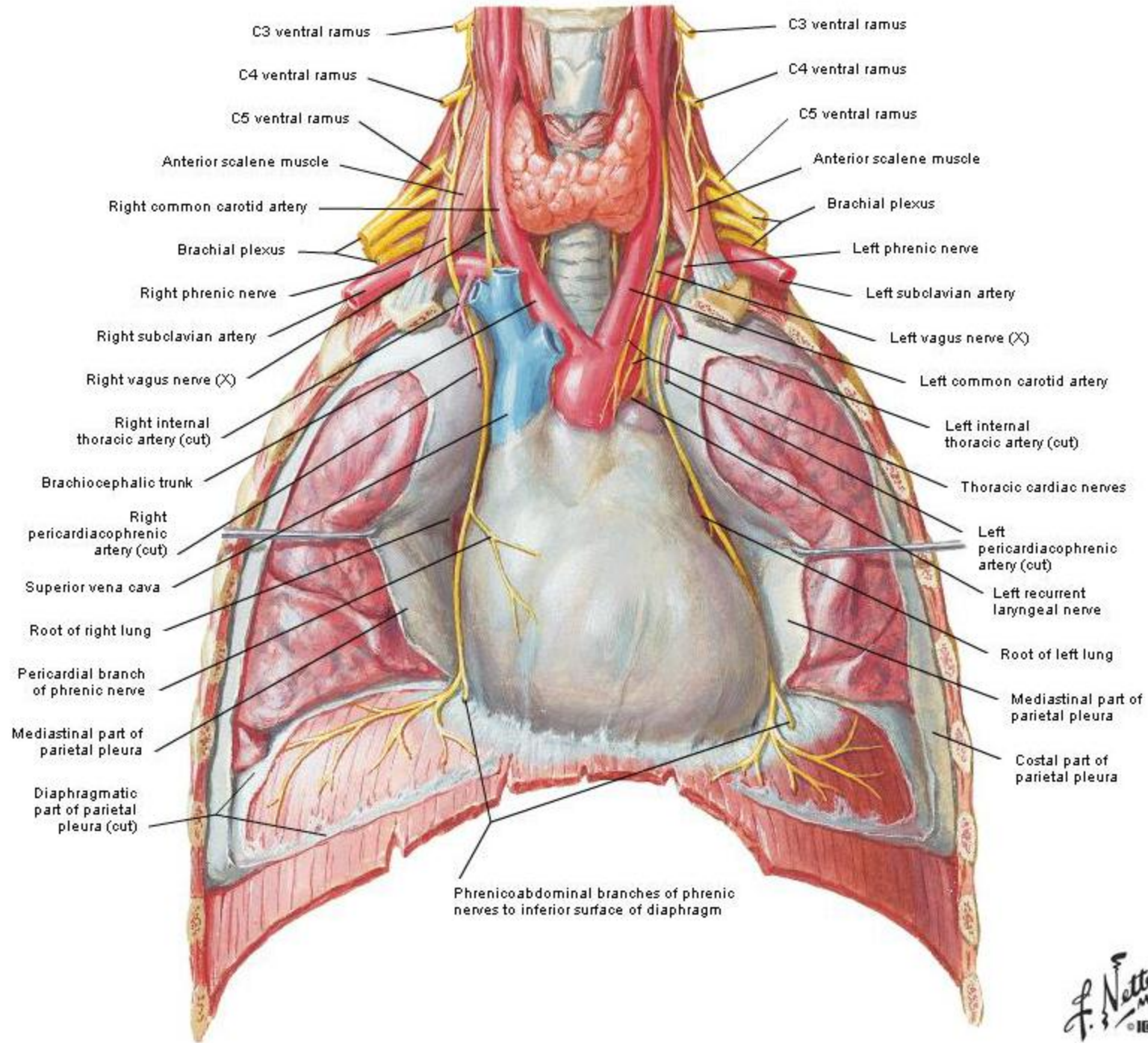


White Ramii Communicantes

Left Side of Schema

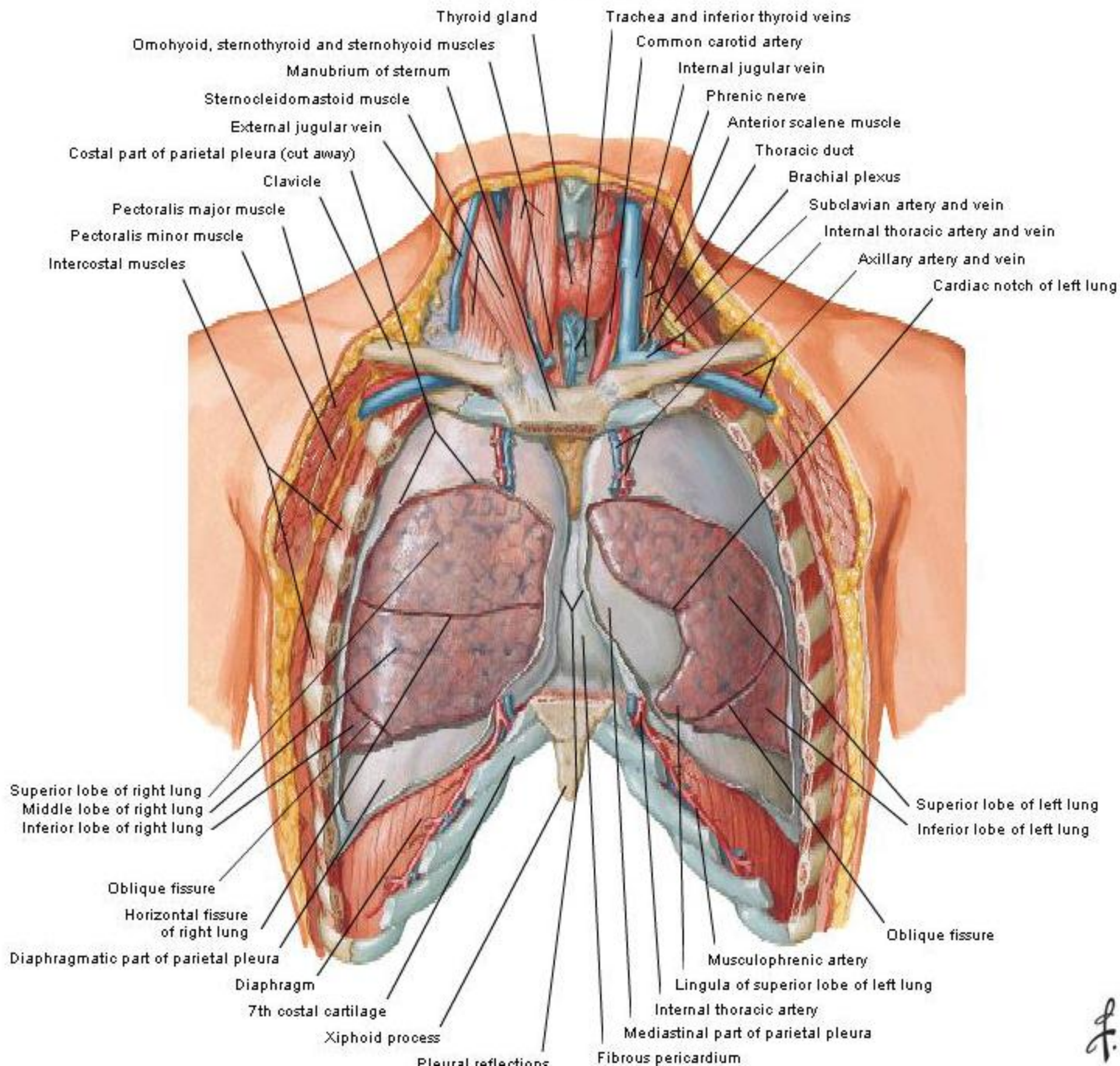


Phrenic Nerve in Situ

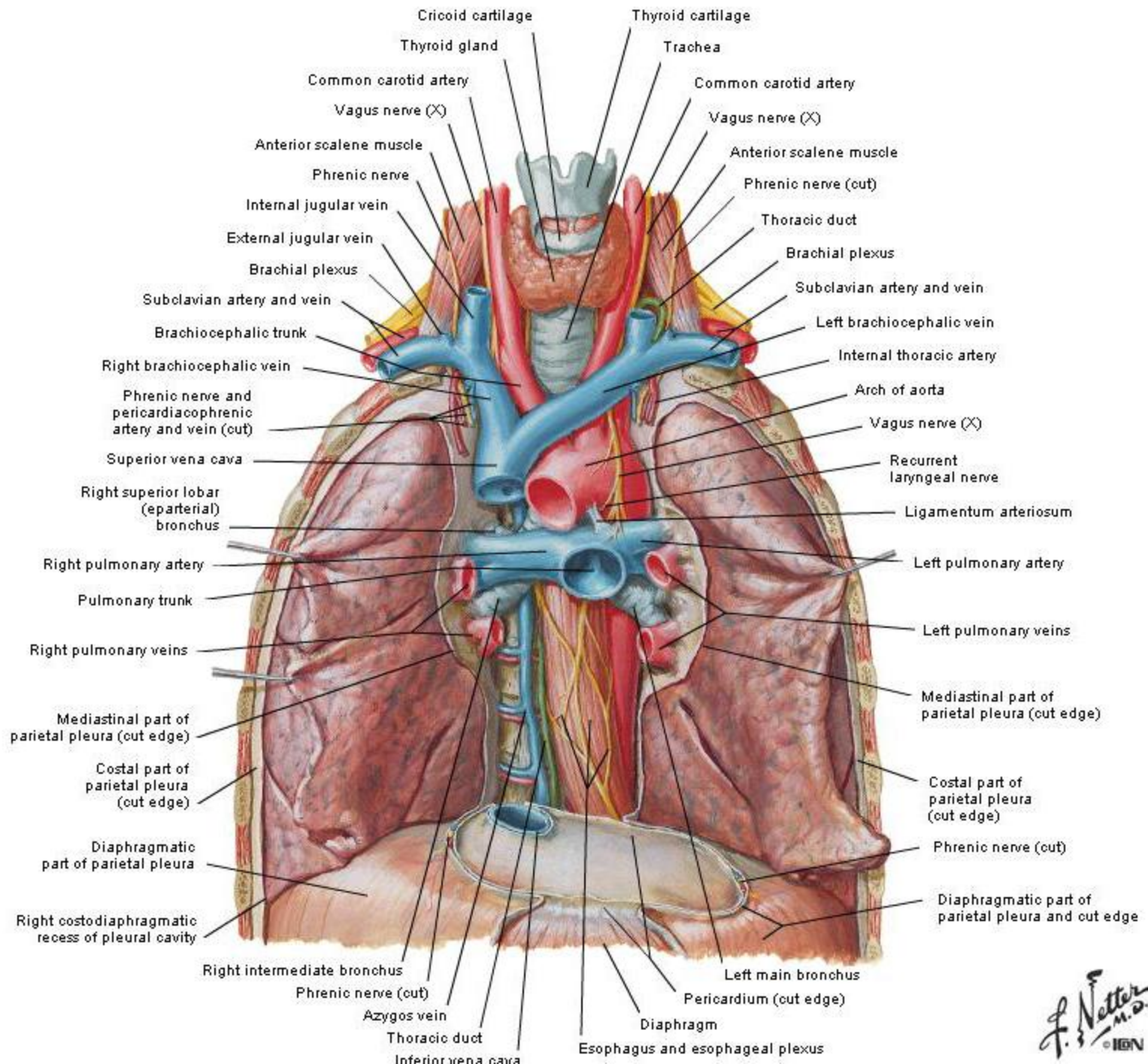


Lungs in Situ

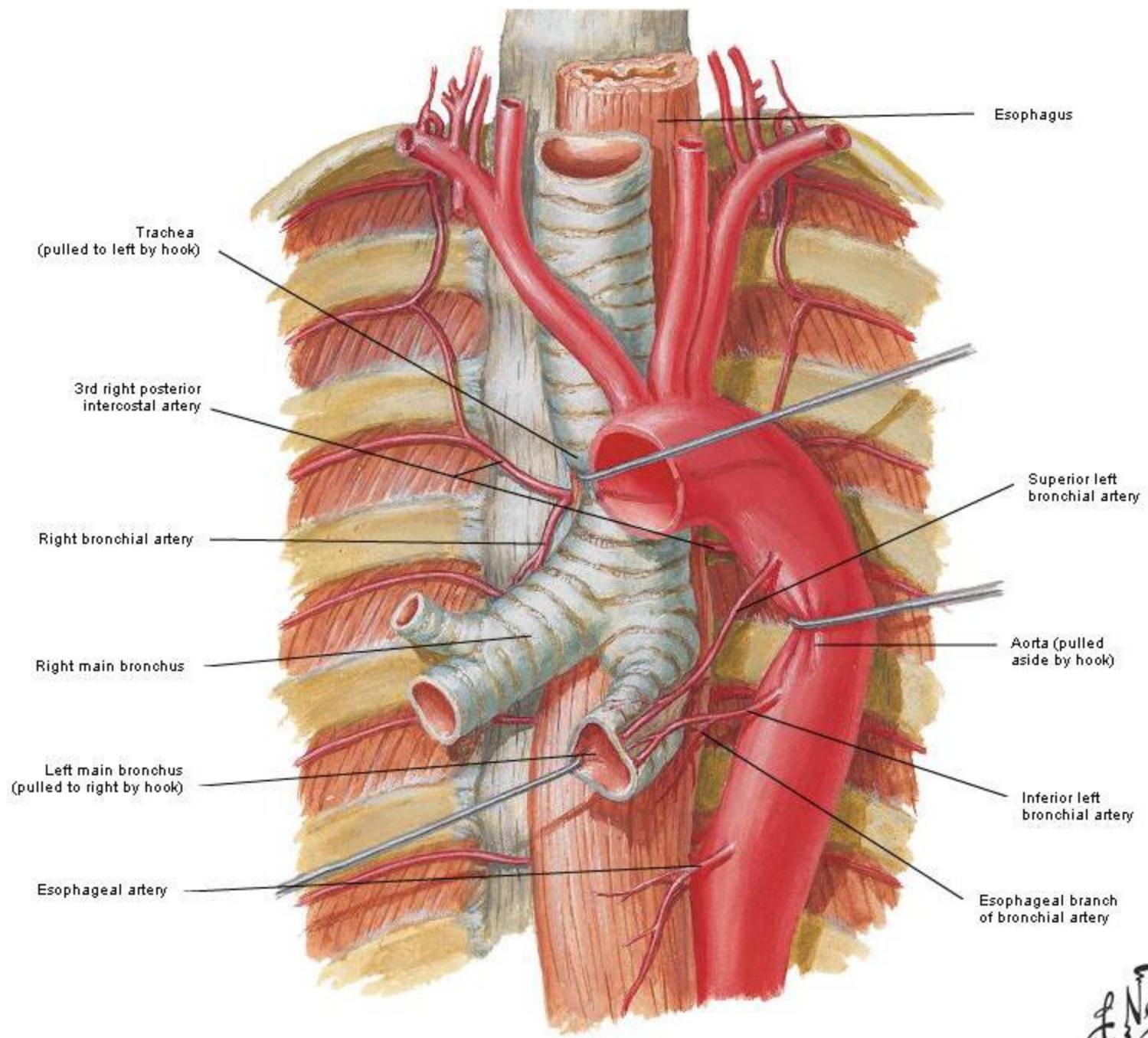
Anterior View



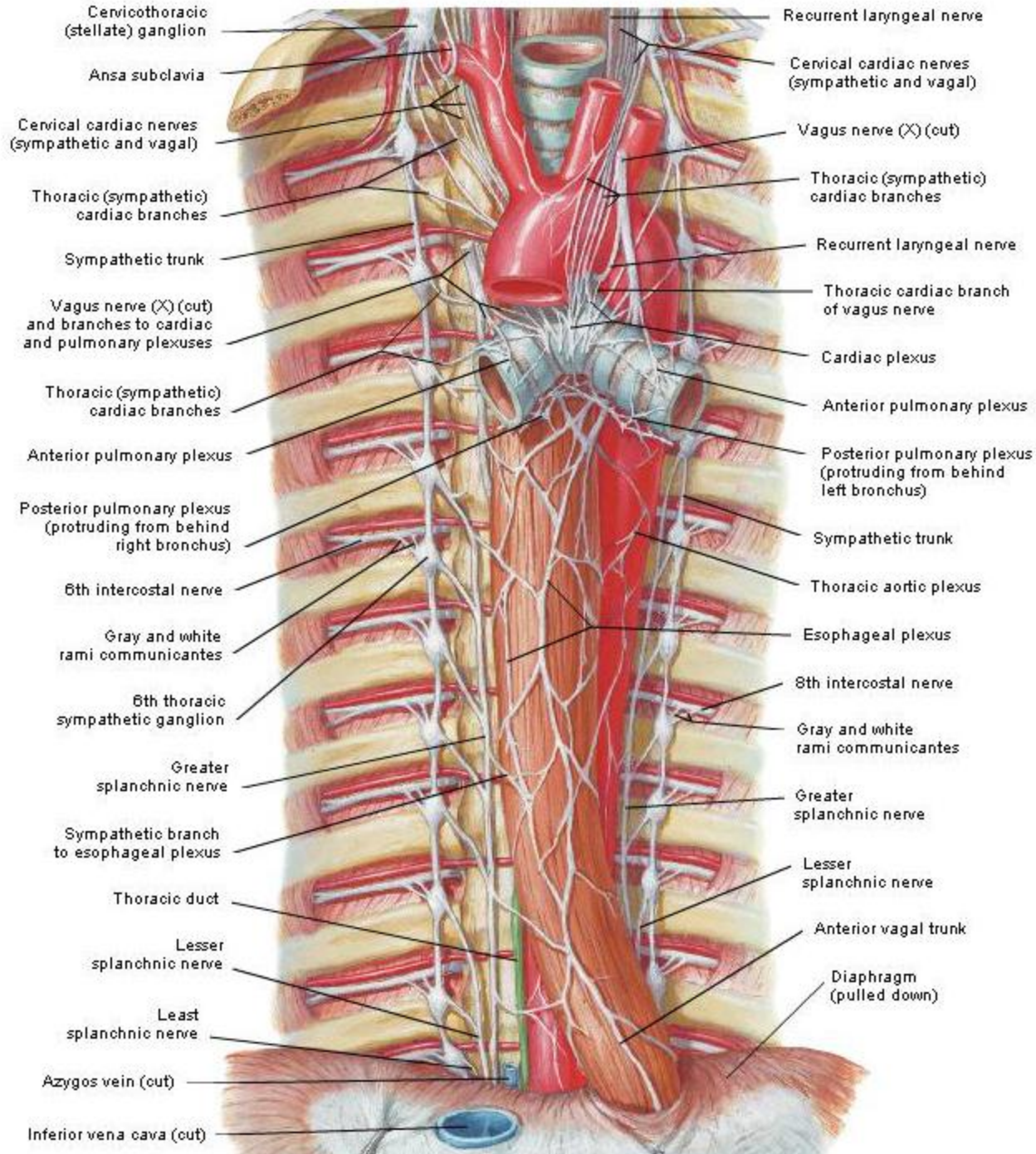
Great vessels of superior mediastinum



Bronchial Arteries

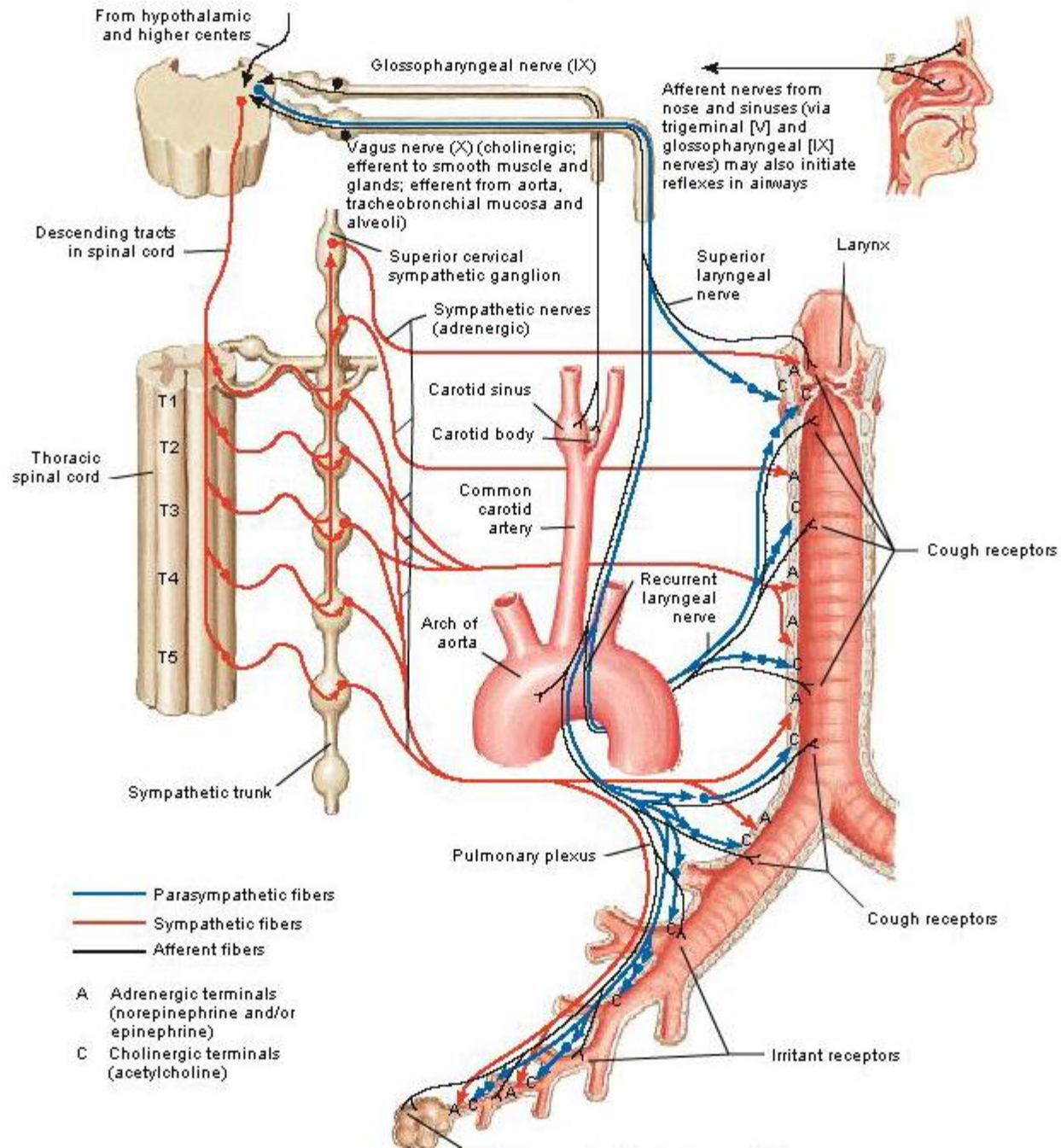


Autonomic Nerves in Thorax

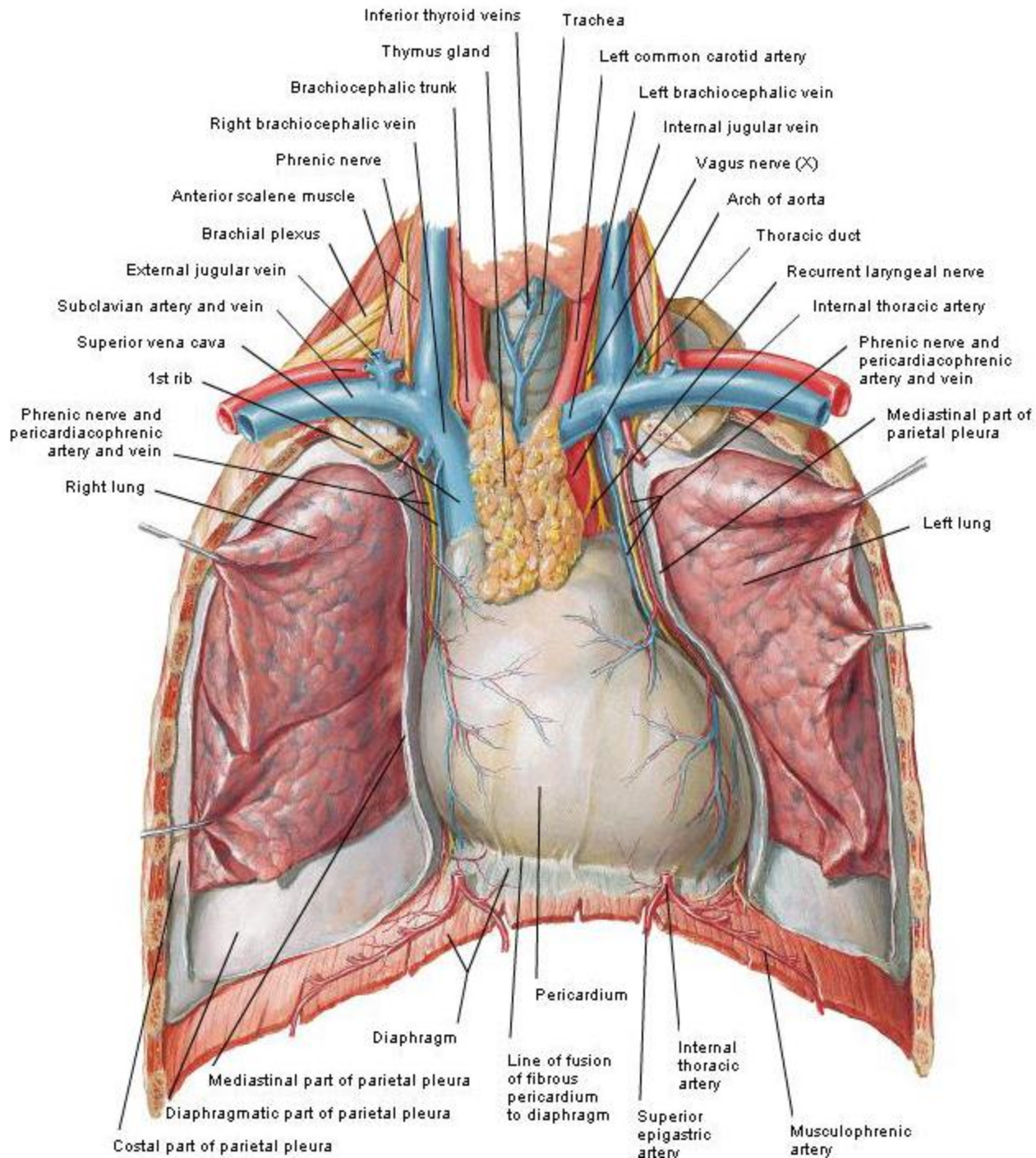


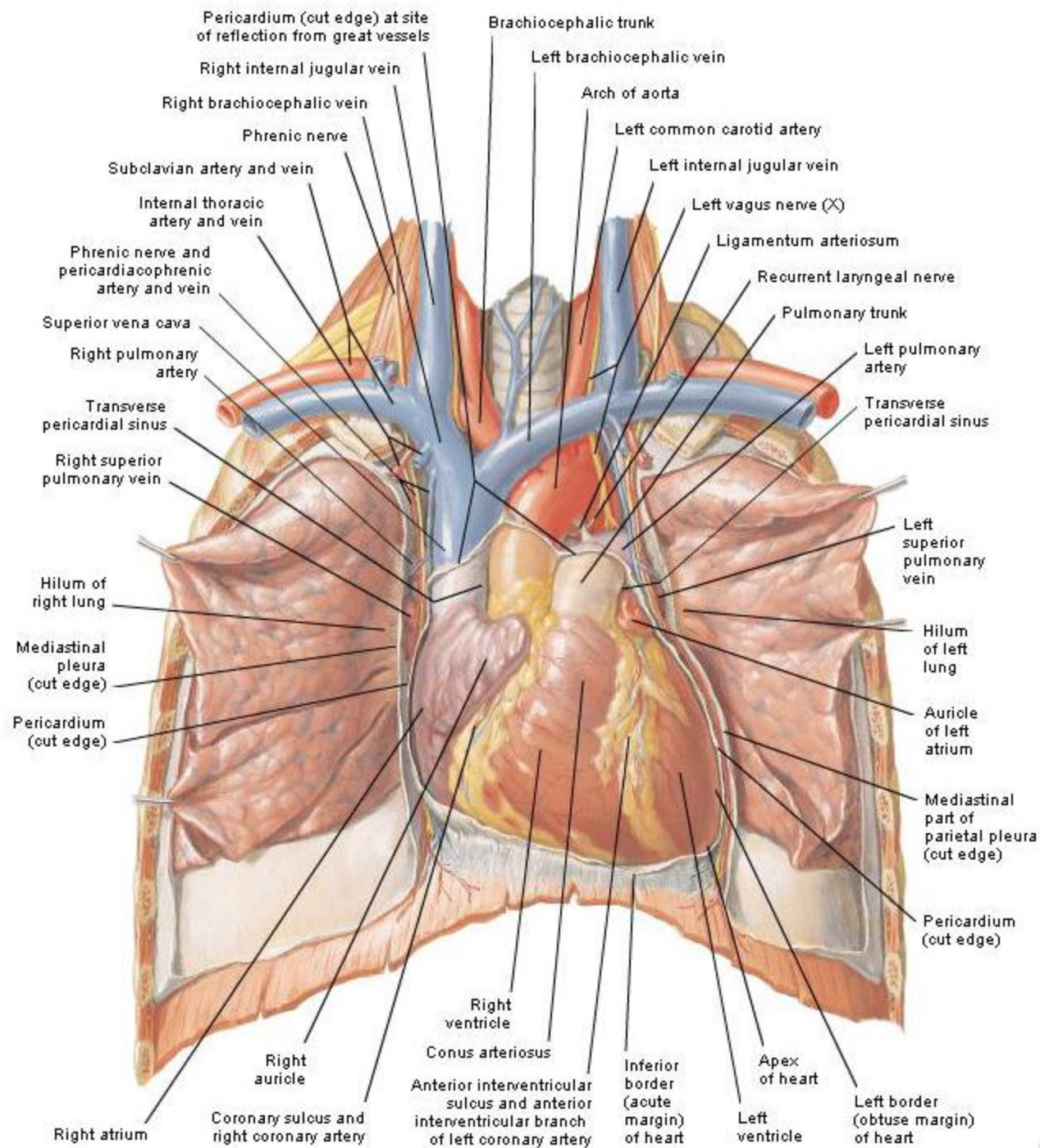
Innervation of Tracheobronchial Tree

Schema

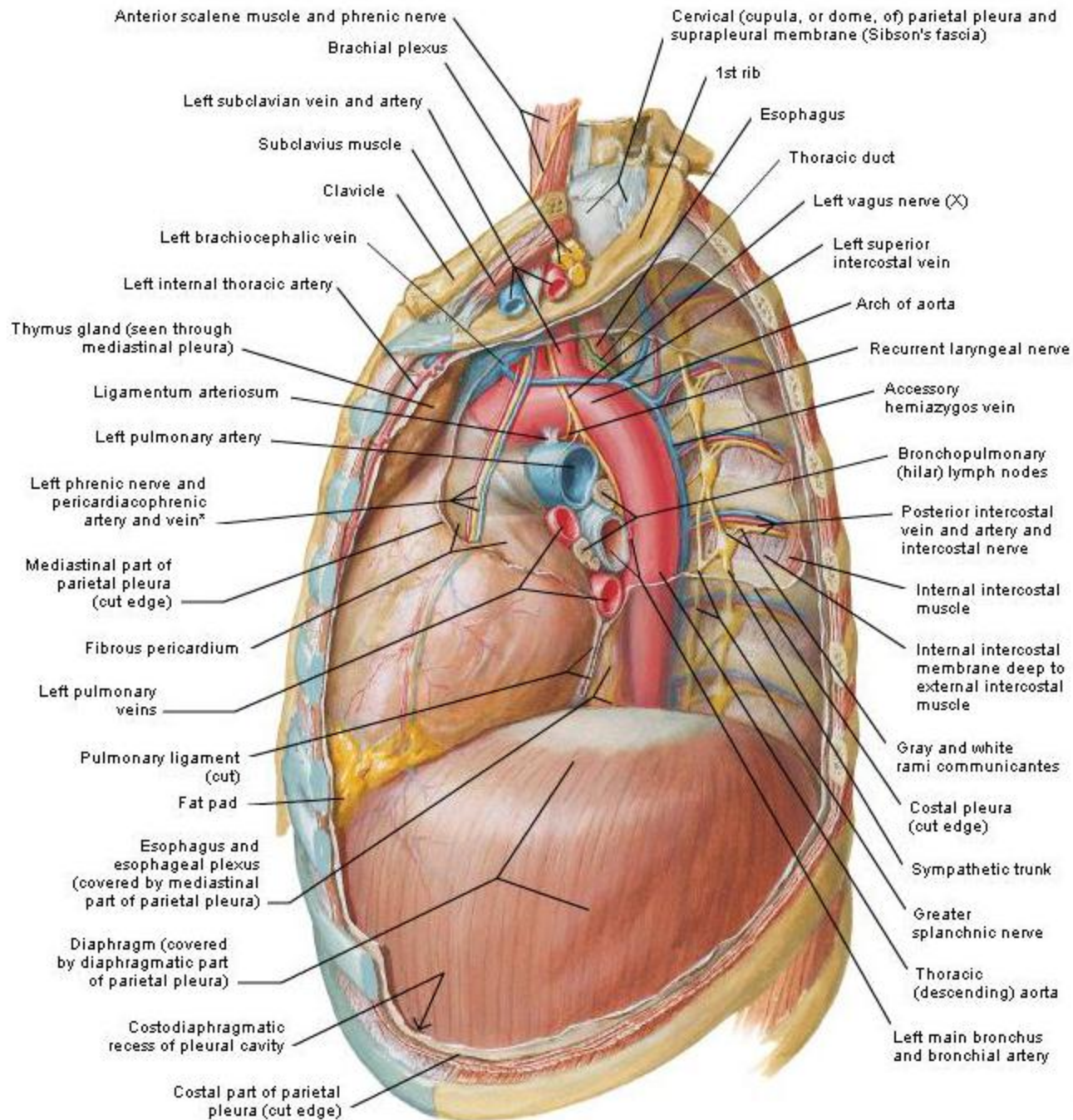


Heart in situ



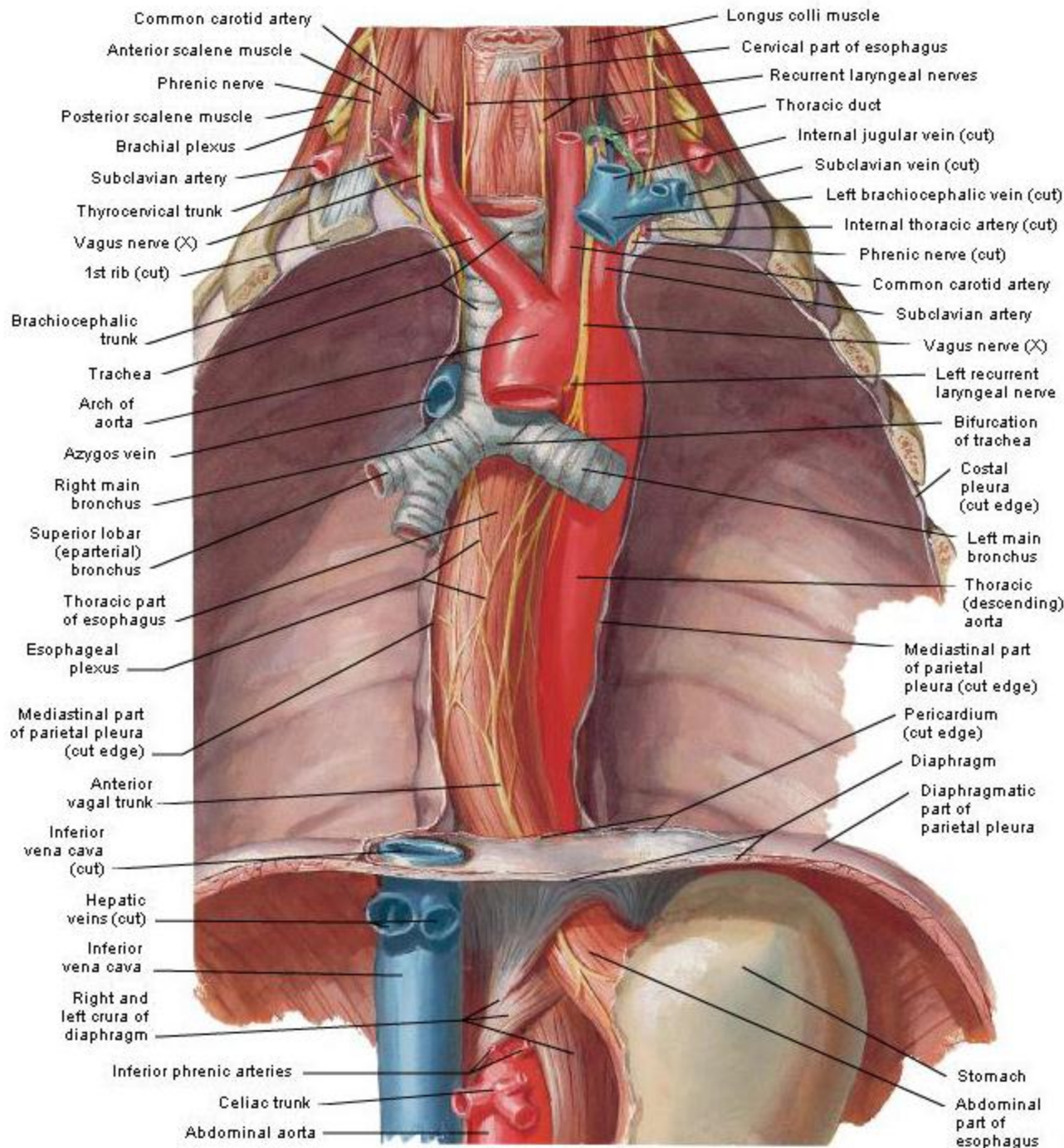


Mediastinum - Left Lateral View



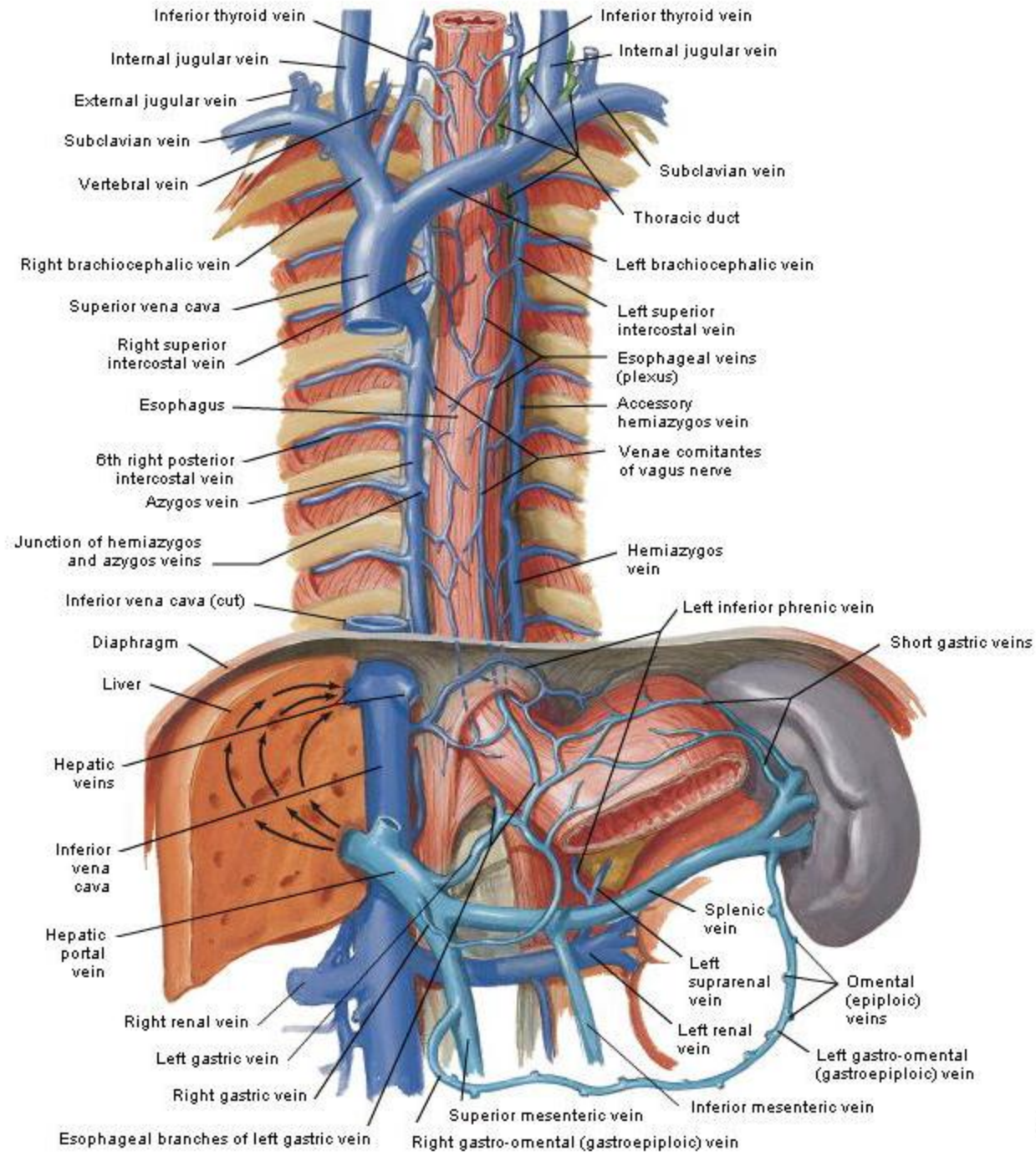
*Nerve and vessels commonly run independently

Esophagus in situ



F. Netter M.D.
© IGV

Veins of Esophagus



Thanks for your attention

