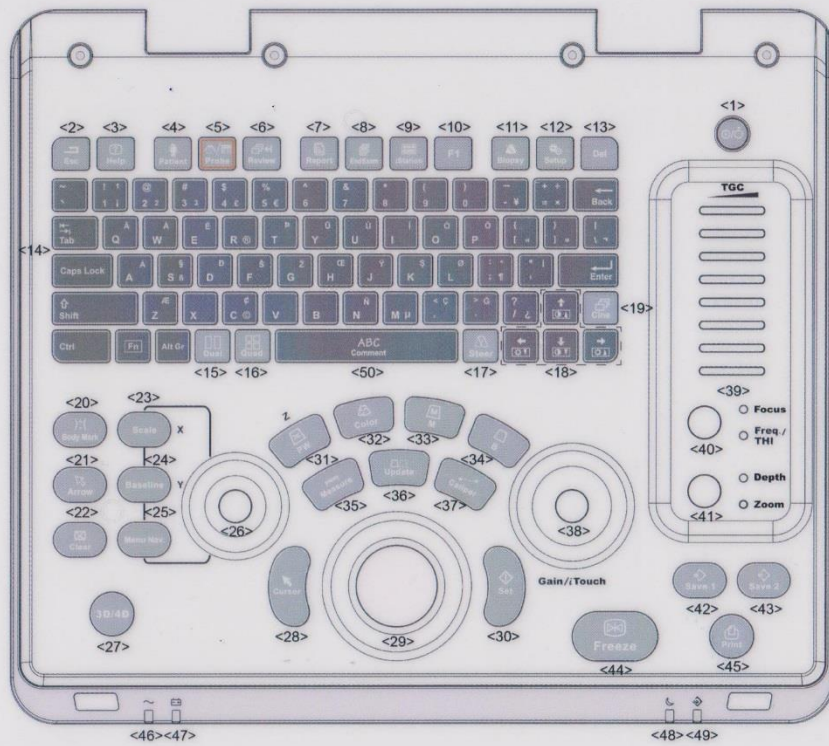




## Quick Guide



- |    |                   |       |                      |
|----|-------------------|-------|----------------------|
| 1  | Power button      | 24    | Baseline             |
| 2  | Esc               | 25    | Menu Nav.            |
| 3  | Help              | 26    | Multifunctional knob |
| 4  | Patient           | 27    | 3D/4D mode           |
| 5  | Probe             | 28    | Cursor               |
| 6  | Review            | 29    | Trackball            |
| 7  | Report            | 30    | Set                  |
| 8  | End Exam          | 31    | PW mode              |
| 9  | iStation          | 32    | Color mode           |
| 10 | User-defined key  | 33    | M mode               |
| 11 | Biopsy            | 34    | B mode               |
| 12 | Setup             | 35    | Measure              |
| 13 | Del               | 36    | Update               |
| 14 | Alphanumeric keys | 37    | Caliper              |
| 15 | Dual              | 38    | Gain/ iTouch         |
| 16 | Quad              | 39    | TGC sliders          |
| 17 | Steer             | 40    | Focus/Freq.THI       |
| 18 | Direction keys    | 41    | Depth/Zoom           |
| 19 | Cine              | 42~43 | Save keys            |
| 20 | Body Mark         | 44    | Freeze               |
| 21 | Arrow             | 45    | Print                |
| 22 | Clear             | 46~49 | Indicators           |
| 23 | Scale             | 50    | Comment              |

## 1. Getting Started

### New Patient

1. Press <Patient>, fill in basic patient information.
2. Press <Probe>.
3. Use the <Trackball> and <Set> to choose probe and exam mode.

## 2. Scanning

### B/M Mode

Press <B> / <M> to enter B mode or M mode.

### CDFI/Power Mode

1. Press <Color> / or click [Power] to enter Color/Power mode.
2. Move <Trackball> to change the position of ROI.
3. Press <Set>, and then move <Trackball> to change the size of ROI, press <Set> again.

### PW Mode

1. Press <PW> to enter PW mode.
2. Move <Trackball> to change the position of sample volume.
3. Press <Update> or <PW> to obtain the Pulse Wave Doppler.

### Free Xros M mode (Anatomical M mode)

1. Under B mode, click [Free Xros M] to enter Free Xros M mode.
2. Use <Trackball> to set the position of the sample line.

### Tissue Doppler Imaging

1. Under B/Color mode with proper probe, click [TDI] to enter TDI mode.
2. Use <Trackball> to change the position and size of the ROI.
3. Press <PW> button to enter TVD mode; or, click [Power] to enter TEI mode.

### iScape

1. Under B mode, click [iScape] to enter iScape View mode.
2. Press <Update> to start the acquisition; press <Freeze> to stop the acquisition.

### 3D/4D Imaging

1. Under B mode with proper probe, press <3D/4D> or click [4D] to enter 3D/4D mode.
2. Move <Trackball> and press <Set> to adjust the ROI and curved VOI.
3. Press <Update> to start the image acquisition; press <Freeze> to stop the image acquisition.

## 3. Measurement

1. Press <Measure> / <Caliper> to enter the application/general measurement status.
2. Move the cursor to choose the measurement tool, and then go to the desired position to measure.

## 4. Post Scanning

### Comments and Body Marks

#### Comment

Press <Comment> to choose the comment setting position and then add the comment to the image.

#### Body Mark

1. Press <Body Mark> and use the <Cursor> and trackball to choose the desired one. Press <Set> to confirm adding, the added one will be highlighted in green solid frame at the left of the image.
2. Move <Trackball> to place the probe marker.

#### Save Images or Cine

1. Press <Save1>, <Save2>, <F1> user-defined key to save a single-frame image or a cine to the system.
2. Press <Review> or select an exam of a patient in the [iStation] screen, and click [Review] to see the image or the cine.

#### Report and Print

1. Press <Report>, move the cursor to the comment text box and type the text.
2. Click [Image Select] on the report page to add images, click [Preview] to preview the report, and then click [Print] to print the report out.

#### End Exam

Press <End Exam> to end one examination. You may start a new exam by repeating the instructions above.

## 5. Image Management

### Image Transfer

1. Press <iStation> to enter the image management system and choose the images.
2. Select an exam from the patient information list. Click [Send Exam] to send the patient information file to USB device, DICOM or other destinations.

## 6. User-defined Settings

Press <Setup>-(System Setup)-(Key Setup) to set F1, Save1 or Save2 as the preference key.

**Note:** For detailed information, please refer to the operator's manual.

P/N: 046-017676-00 (2.0)



