

Pro ITM Miner (VIP Edition)

Profitable High-Frequency Signals

By Bernard Ondara (binarywinnersclub@gmail.com)

Facebook Group: <https://www.facebook.com/groups/binarywinnersclub/>

Telegram Group: <https://t.me/joinchat/EBsv9EMMTuNPYlUXdxQoww>

Telegram Channel: <https://t.me/binarywinnersclub>

Time Frame: M15 (only) || Expiry: 5-15Min || Platform: MetaTrader4 (MT4)

Assets: Any (especially Currency Pairs)

Note: even without using any optimization tips or additional filter, this system is tested and found to be scoring an average win rate of 70%+ consistently. Just ensure that you are patient enough to wait for the candle to retrace to its opening price OR get those signals that come immediately a new candle is forming. Try other expiries too.

WARNING: THIS 2-WEEK TRIAL VERSION EXPIRES ON 19TH MARCH 2019.



Signal Optimization Tips

- ✓ Do not trade 30min before and after medium-high impact news
- ✓ If the candle with arrow has a long wick in the direction of the arrow, skip the signal
- ✓ Avoid trading when candles forming so tiny or too large
- ✓ If possible, do not trade for 30min from when markets or sessions open
- ✓ If you can, do not trade CALLs into Resistance levels and PUTs into Support levels
- ✓ Don't chase signals. If you cannot get a good entry price level, skip the trade

{For a List of Recommended Brokers: Go to the last Page}

TRADING SIGNALS

CALL Signal

1. A DeepSkyBlue Up Arrow appears below the previous Candle. The candle with the arrow is touching the Blue MA, nearly touching it or even below the MA
2. The **Yellow** Moving Average (MA) is **above** the **Blue** MA; both are pointing up
3. The current candle has just started forming or has retraced back down to its opening price (or very close to its opening price)
4. Enter a CALL trade to expire at the end of the 15Min candle. This could be x:15, x:30, x:45, or x:00 where x is the current hour. Alternatively, if your **Broker** allows you to enter the exact expiry time, enter that period in minutes. For instance, if the steps 1 and 2 are valid when the current candle has 7 minutes remaining (check candle timer), then you enter 7 minutes as you expiry time.



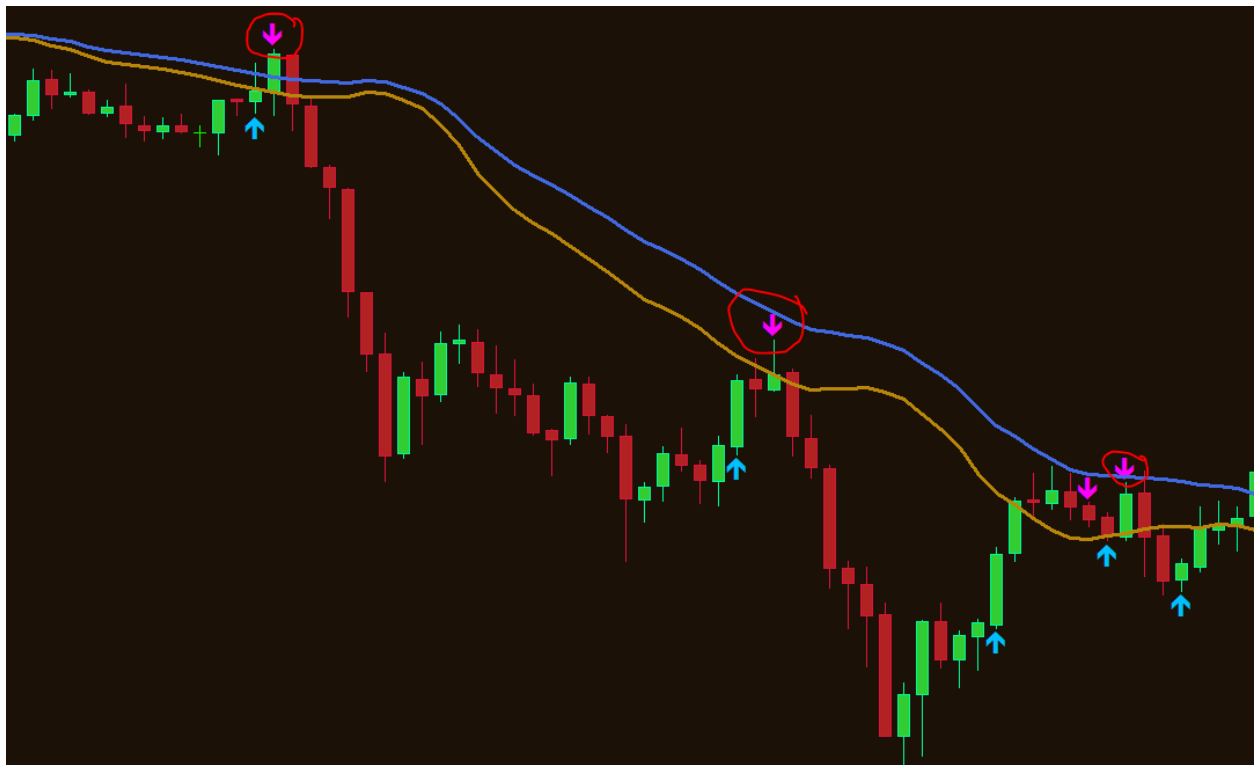
To Get a Lifetime License {Get 25% DISCOUNT before 19th March 2019}

Price: \$300 payable via Skrill/PayPal/Neteller. Get your 25% DISCOUNT today.

Contact me for details.

PUT Signal

1. A Magenta Down Arrow appears above the previous Candle. The candle with the arrow is touching the Blue MA, nearly touching it or even above the MA
2. The Yellow Moving Average (MA) is **below** the Blue MA; both are pointing down
3. The current candle has just started forming or has retraced back up to its opening price (or is very close to its opening price)
4. Enter a PUT trade to expire at the end of the 15Min candle. This could be x:15, x:30, x:45, or x:00 where x is the current hour. Alternatively, if your **Broker** allows you to enter the exact expiry time, enter that period in minutes. For instance, if the steps 1 and 2 are valid when the current candle has 12 minutes remaining (check candle timer), then enter 12 minutes as you expiry time. Experiment with other expiries.



Feel Free to Add Other Filters

Example: using Bollinger Bands, ensure the candle with the arrow touches or nearly touches the Lower BB for CALLs or upper BB for PUTs.

To Get a Lifetime License {Get 25% DISCOUNT before 19th March 2019}

Price: \$300 payable via Skrill/PayPal/Neteller. Get your 25% DISCOUNT today.

Contact me for details.