

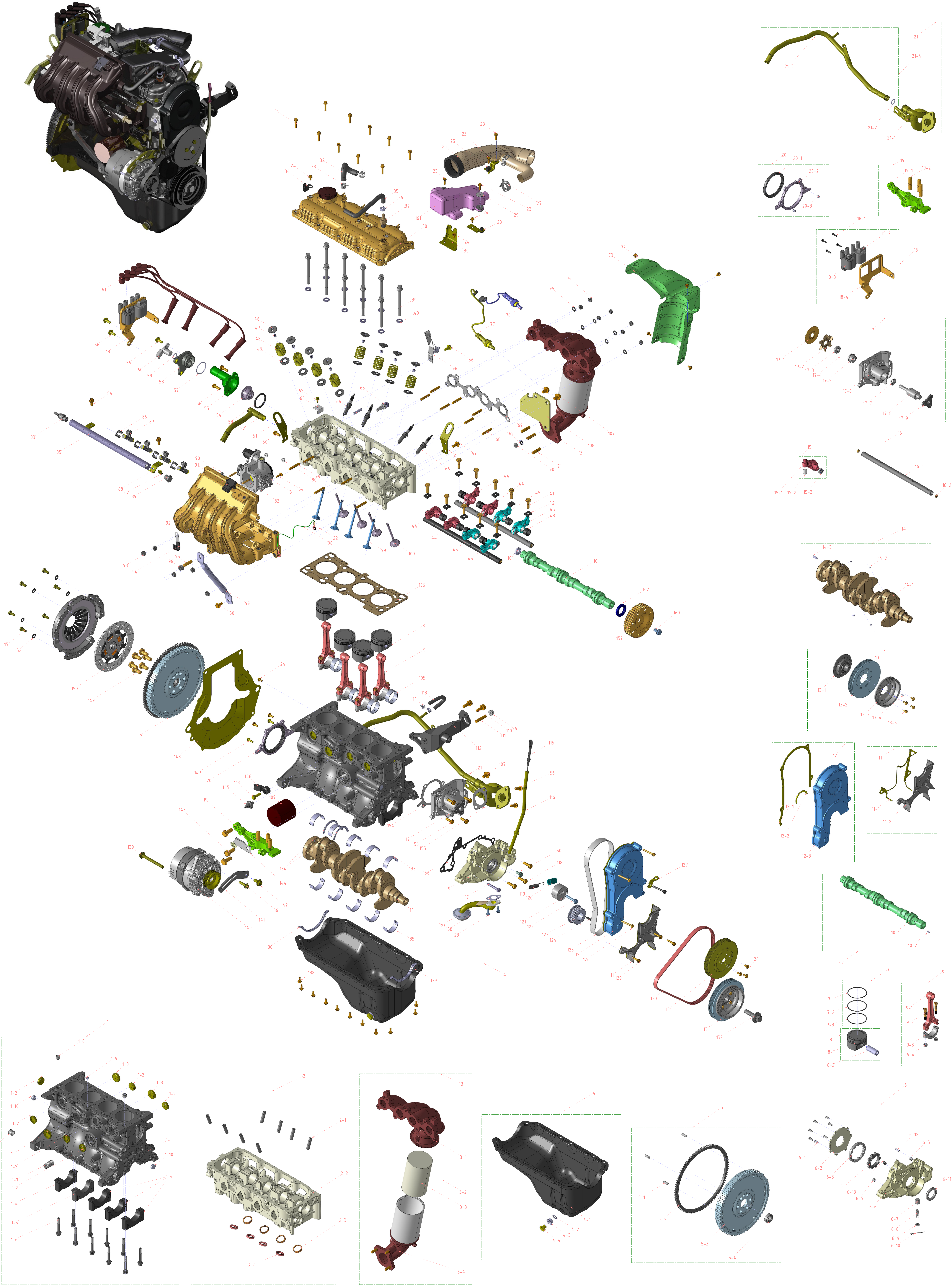


شرکت تولیدی موتور، گیربکس و اکسل سایپا (مگاموتور)



معاونت تحقیق و توسعه

M13GS



NO	PART NAME	PART NUMBER	QTY	NO	PART NAME	PART NUMBER	QTY	NO	PART NAME	PART NUMBER	QTY	NO	PART NAME	PART NUMBER	QTY
1	BLOCK CYLINDER ASSY	M13XF-10-310	1	6-11	SEAL OIL	083C7 - 10 - 602A	1	17-4	IMPELLER - W. PUMP	KKY01 - 15 - 111	1	40	WASHER-HEAD BOLT	KKY01-10-138A	10
1-1	BLOCK CYLINDER	M13XF-10-310	1	6-12	DIL PUMP PIN	MB630 - 12 - 712	1	17-5	IMPELLER - W. PUMP	KKY01 - 15 - 110	1	41	BOLT	MB630-12-175.5A	10
1-2	CAP SEAL	K99306-3000	6	6-13	PROVIL OIL PUMP	MB630 - 14 - 239	1	17-6	HOUSING-W. PUMP BRG	MB630 - 15 - 101C	1	42	CAP-ROCKER SHAFT	KKY01-12-169	8
1-3	CAP SEAL	K99306-5000	6	6-14	RING ASSY	M13XF-11-239	1	17-7	WATER BAFFLE PLATE	MB601 - 15 - 125A	1	43	ROCKER ARM SPACER	M13XF-12-166	8
1-4	CAP - C SHAFT BRG 12,3,5	MB630 - 10 - 351	4	6-15	RING ASSY	M13XF-11-122	4	17-8	ROCKER ARM ASSY 3&4	KKY01 - 15 - 112	1	44	ROCKER ARM ASSY 3&4	M13XF-12-150	4
1-5	CAP - BRG 4	MB630 - 10 - 371	1	6-16	RING PISTON 2ND	M13XF-11-132	4	17-9	BOSS - WATER PUMP PULLY	MB301-15-117	1	45	ROCKER ARM ASSY 1&2,4	M13XF-12-130	4
1-6	BOLT OF CAP CRANK	MB630 - 10 - 352	10	6-17	RING SET OIL	M13XF-11-140	4	17-10	IGNITION COIL ASSY	M13C18-101	1	46	SEAT-VALVE SPG LUR	M13C08-12-113	8
1-7	JOINT OIL FILTER	MB630-10-319	1	6-18	PISTON MACHINED	M13XF-11-102F	4	18-1	BOLT COIL	TN030 - 18507	4	47	COTTER-VALVE	M13C08-12-114	16
1-8	PIN TUBULAR CYL. HEAD	MB630-10-306	2	6-19	PISTON PIN	M13XF-11-201	4	18-2	IGNITION COIL	22433 IA001	4	48	VALVE SPRING	M13XF-12-125	8
1-9	PLUG OIL CONTROL	M13XF-10-305	1	6-20	CONNECTING ROD ASSEMBLY	M13XF-11-210	4	18-3	IGNITION COIL	22433 IA001	1	49	SEAT-VALVE SPG. LUR	MB630-12-123	8
1-10	BLND PLUG	M0221-10-317	2	6-21	ROD CONNECTING	M13XF-11-211	4	18-4	BRACKET IGNITION COIL	M13N1 - 10 - 105	1	50	BOLT - F. HANGING BRKT-OL PUMP-STAY MANIFOLD	K99794-0820	3
1-11	TUBULAR PIN	K99234-9196	2	6-22	ROD CONN	MB356 - 11 - 214A	8	19	BRACKET - E / G NO.3	MDX01 - 39 - 030	1	51	HANGER-ENGR	MB630-10-566	2
2	CYL HEAD ASSY	M13XF-10-101	1	6-23	CAP-CONNECTING ROD	MB834 - 11 - 212A	4	19-1	BRACKET	MDX01 - 39 - 031	1	52	WATER PIPE OUTLET	TN030-13020	1
2-1	GUIDE - VALVE	M13B8-10-281	1	6-24	NUT-CONNECTING ROD CAP	KKY01 - 11 - 215	8	19-2	STUD	MB910 - 39 - 032	3	53	SEAL-THERMOSTAT	TN030 13008	1
2-2	CYLINDER HEAD PREMACHINED	M13XF-10-101/C	1	6-25	CAMSHAFT ASSY	M13XF-12-420	1	20-1	REAR COVER ASSY	KKY151 - 11 - 310	1	54	TERMOSTAT	DK241-15-171	1
2-3	INSERT INLET VALVE SEAT PREMACHINED	M13B8-10-102	4	6-26	CAMSHAFT	M13XF-12-421	1	20-2	OIL SEAL	KKY01 - 11 - 312	1	55	THERMOSTAT HOUSING	KK348-15-172	1
2-4	INSERT EXHAUST VALVE SEAT PREMACHINED	M13B8-10-103	4	6-27	PARALLEL PINE	TN030-13009	1	20-3	COVER - REAR	MB366 - 11 - 318	1	56	THERMOSTAT HOUSING	K99794-0825	13
3	EXH MANFOLD ASSY	M13XF-13-450	1	6-28	COVER - T. BELT LWR ASSY	KK150 - 10 - 500	1	21	INLET PIPE WATER	M13XF-15-290	1	57	SUPPORT TDC SENSOR SEAL	M13N1-18-402	1
3-1	EXH MANFOLD	M13XF-13-451	1	6-29	GASKET - COVER T. BELT	MB630 - 10 - 501	1	21-1	INLET PIPE WATER	M13XF-15-1600	1	58	PIPE BY PASS COMPT	M13N1-18-401	1
3-2	CCC-CATALYST ASSY	M13XF-13-452	1	6-30	COVER - T. BELT UP ASSY	MB630-10-510	1	21-2	D RING	KKY01 - 15 - 287	1	59	TDC SENSOR O RING	M13N1-18-401	1
3-3	MONOLITH CAT	M13XF-13-454	1	6-31	GASKET - COVER T. BELT	MB630 - 10 - 512A	1	21-3	PIPE-BY PASS ASSY	M13XF-15-280B	1	60	TDC SENSOR	M13C18-18-42	1
3-4	CCC-CATALYST ASSY	M13XF-13-452	1	6-32	GASKET	MB630 - 10 - 513	1	22	PIPE-BY PASS COMPT	MB910 - 39 - 032	1	61	CORD SET-H TENSION	M13C18-18-140	1
4	OIL PAN ASSY	KKY01 - 10 - 400A	1	6-33	COVER-T. BELT UP	M13N1-11-200	1	23	BOLT-STRAINER ASSY OIL-PIPE AIR INTAKE	K99794-0620	6	62	BOLT-CAMSHAFT-ALUMINUM	K99794-0610	3
4-1	OIL PAN	MB630 - 10 - 401A	1	6-34	PULLEY-ASSY C SHAFT	M13N1-11-200	1	24	BRACKET-PULLEY WATER PUMP- END PLATE-VALVE COVER	K99794-0612N	7	63	FUEL RAIL	MB630-12-415	1
4-2	SEAT - DRAIN PLUG	MPN11 - 10 - 403	1	6-35	BUSS PULLEY	TN030-11411	1	25	BRACKET & MOUNTING RUBBER	M13XF-20-21V & M13XF-11-343	1	64	PIPE BY PASS	MB630-15-271A	1
4-3	GASKET	K99564-11400	1	6-36	PULLEY	TN030-11401	1	26	PIPE AIR INTAKE	M13XF-13-330	1	65	COOLANT TEMPERATURE SENSOR	MB630-15-280	1
4-4	PLUG	K99564-11400	1	6-37	PARALLEL PIN	TN030-11403	1	27	PIPE BY PASS	KYWNBC-3100	2	66	SPARK PLUG	M13N1-18-110	4
5	FLYWHEEL ASSY	M13N1-11-500	1	6-38	PARALLEL PIN	K99225 - 0412	1	28	CHAMBER RESON	MB359-20-650	1	67	BOLT - R. HANGING BRKT TO BLOCK	M13N1-18-110	1
5-1	FLYWHEEL PIN	K99233 - 0822	3	6-39	BOLT	M13N1 - 11 - 405	4	29	CHAMBER RESONANCE	M13XF-13-19X	1	68	STUD	K99515-0828A	7
5-2	GEAR RING - FLYWHEEL	KKY01 - 10 - 400A	1	6-40	CRANK SHAFT ASSY	M13N1-11-302	1	30	BRACKET-ACCEL WIRE	M13N1-13-656	1	69	GASKET - EXHAUST MANIFOLD	M13XF-13-460	1
5-3	FLYWHEEL	M13N1 - 11 - 500A	1	6-41	CRANK SHAFT	M13N1-11-301	1	31	VALVE COVER BOLT	K99794-0630B	10	70	NUT	KK150-4-0-355	1
5-4	BEARING PILOT	KKY01 - 11 - 303	3	6-42	PIN-ROCKER EXH ASSY	M13XF-12-124	1	32	HOSE VENTILATION	K99794-0610	1	71	SHED M10	KKY01-13-456	3
5-5	OIL PUMP ASSY	TN030 - 15070	1	6-43	SHAFT-ROCKER EXH ASSY	MB632-12-130C	1	33	CLIP	K99233-1700	2	72	HEAT SHIELD - EXH MANIFOLD	K99794-0610	5
5-6	SCREW	KFE1H - 14 - 124	7	6-44	PUMP-CRANK SHAFT	M13N1-11-200	1	34	CLIP	K99234-1208	1	73	HEAT SHIELD - EXH MANIFOLD	M13XF-15-455	1
5-7	COVER OIL PUMP	MB3C7 - 14 - 121	1	6-45	ARM ROCKER 3,4	M13XF-12-150	4	35	HOSE VENTILATION	M13XF-13-741	1	74	NUT - EXH. MANIFOLD	K99906 - 0800	7
5-8	ROTOR - O. P. OUT	083C7 - 14 - 141	1	6-46	ARM ROCKER 3,4	MB630-12-161C	4	36	CLIP	K99283-1600	1	75	WASHER SPRING - EXH MANIFOLD	M13N1 - 13 - 458	6
5-9	ROTOR - O. P. IN	MB3E7 - 14 - 132	1	6-47	H.L.A.	M13XF-12-134	1	37	PCV	M13XF-13-890	1	76	OXYGEN SENSOR	M13C18-18-861	1
6	FLYWHEEL	M13N1 - 11 - 500A	1	6-48	PN & ROLLER ASSY	M13XF-12-124A	1	38	VALVE COVER	MB630-10-135A	10	77	OXYGEN SENSOR	M13XF-18-861	1
6-1	GASKET	K99564-11400	1	6-49	SHAFT-ROCKER EXH ASSY	MB632-12-130C	1	39	BOLT - CYL. HEAD	MB630-10-135A	10				
6-2	OIL PUMP BODY	DK933 - 14 - 111	1	6-50	SHAFT-T. BELT UP	M13N1-11-200	1								
6-3	DIL PUMP PRESSURE CONT	KKY01 - 14 - 115	1	6-51	PISTON-CRANK SHAFT	KKY01-15-111 / 2	1								
6-4	SPR PRESS CONT	K0324 - 14 - 116B	1	6-52	IMPELLER	KKY01 - 15 - 111 / 2	1								
6-5	SHEEL SPRING	M0222 - 14 - 118	1	6-53	BUSH	KKY01 - 15 - 111 / 3	1								
6-10	SPLIT PIN	K99221 - 3035	1												

Details	Date	Project	M13 EURO 4	QTY	Rev
Drawn	2023/08/01	Project	M13 EURO 4	1	01
Checked	2023/08/01	Project	M13 EURO 4	1	01
Approved	2023/08/01	Project	M13 EURO 4	1	01
Part Name	ENGINE COMPLETE	Revision	02		
Draw No	T N200 02000	Revision	02		

