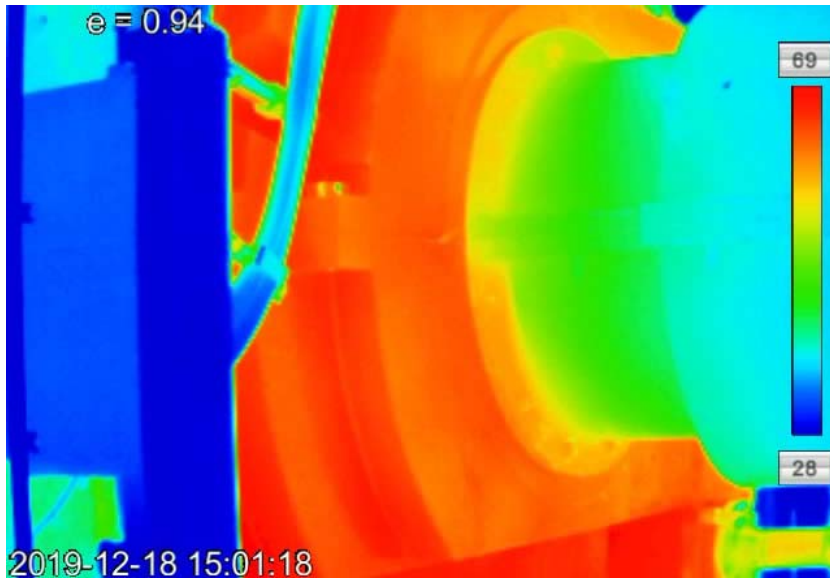




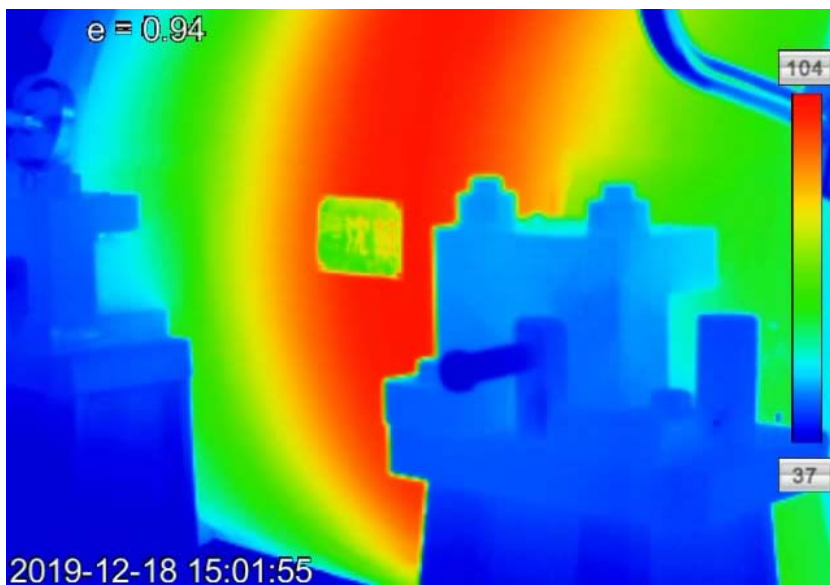
**HP Gas Compressor Package (M-12820C) - NDE Bearing**



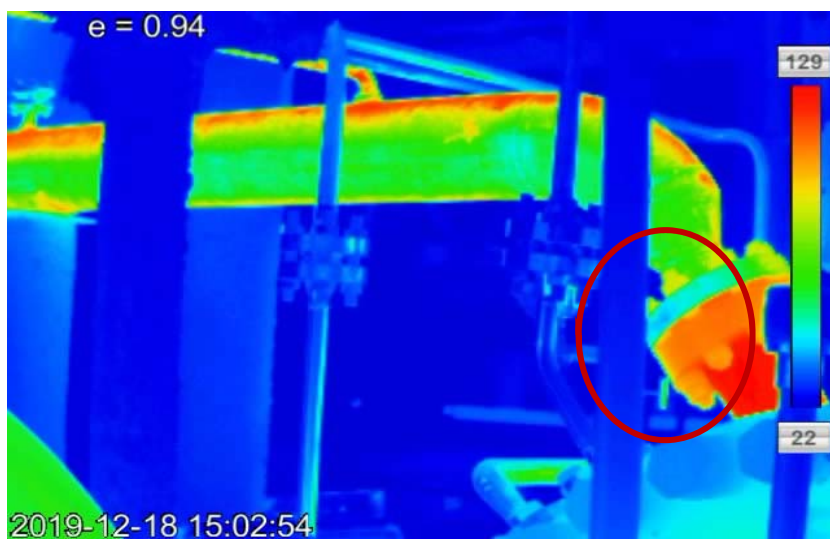
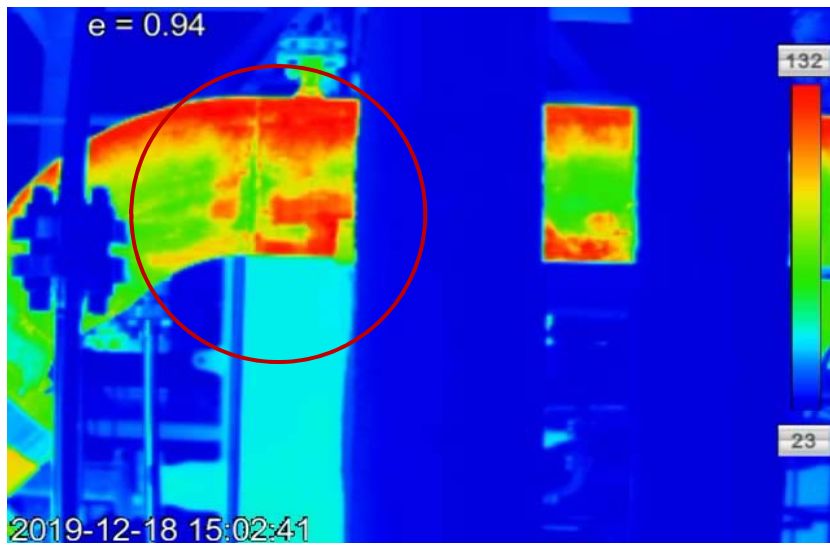
**HP Gas Compressor Package (M-12820C) - DE Bearing**



**HP Gas Compressor Package (PK-12820C) - Gearbox**



**HP Gas Compressor Package (PK-12820C) - Compressor**



	Previous Temp 12-Dec-2019	Current Temp 18-Dec-2019	$\Delta T$ (C)	Allowable Temp (Bearing Housing / Electro-motor)
<b>Electromotor</b>	56	52	-4	80 / 120
<b>Gearbox</b>	70	69	-1	-
<b>Compressor</b>	81	104	+23	130
<b>Comment</b>	Heat distribution status and temperature values are normal. Hot spots are found in some pipping and flange areas. This can be caused by decreasing thickness.			