

# CHAPTER 15

## Contents

- ✓ The long diagonal
- ✓ Opening a blocked diagonal
- ✓ Combinations on other diagonals

## Combinations involving diagonals

In this chapter we shall examine combinations which exploit an open diagonal. At the same time we shall learn how we can open a blocked diagonal by tactical means. Of course the main pieces to profit from an open diagonal are the queen and the bishops. The bishops in particular are dependent on open diagonals to develop their full potential. But the other pieces must also support the attacking efforts by the bishop.

In some combinations based on diagonals we shall see tactical motifs we already know: the discovered attack (a subject which was treated in *Build Up Your Chess 1*, Chapter 7), deflection, etc.

### The long diagonal

Diagram 15-1

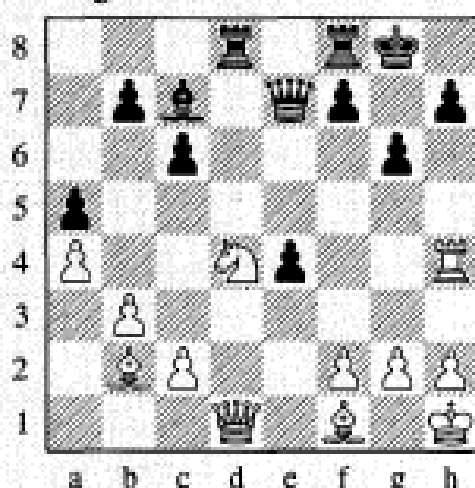


Diagram 15-1

V. Vukovic – N.N.

Simultaneous game

An open long diagonal and the weakness of the black squares inspire White to a mating attack.

1. ♖f5!!

Threatening ♖h6# or ♖xc7#.

1... ♗xb4

1... ♗xf5 loses on the spot to 2. ♖g4† f×g4 3. ♗xg4†.

If 1... ♗g5, then 2. ♖c1! ♖d1 (2... ♗xc1 3. ♖e7#; 2... ♗xf5 3. ♗h6!+–) 3. ♗xd1 ♗xf5 4. ♗d4 f6 5. ♖c4†+–.

2. ♗h5!!

The threat is once more ♖h6#.

If 2... ♗xb5, then 3. ♖e7#; while 2... ♗xf5 is followed by 3. ♗xb4 f6 4. ♖c4†+–.

1–0

Diagram 15-2

**O.Panno – B.Malich**

Munich Olympiad 1958

1. ♖xc5! ♜xc2?

This intermediate move is refuted in an instructive way. 1...♖xc5 is met by 2.♙c6 and White wins at least the exchange, since 2...♜b7? loses to 3.♙e7†.

2. ♖xg7! ♜xc1 3. ♖f6

Threatening ♜h6.

3...♙f8 4. ♜xc1

White has two pieces for the rook and a strong attack on the king.

4...♙e8 5. ♜c7

Black is losing the d6-pawn as well, so he decided to put an end to his torture.

1-0

Diagram 15-2

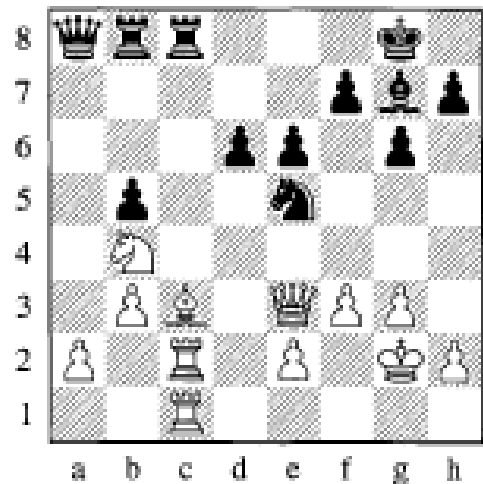


Diagram 15-3

**L.Schmid – N.Rossolimo**

Heidelberg 1949

1...♜xg2†!

Black opens the long diagonal with a combination.

2. ♙xg2 ♜xf2†!

White resigned, in view of 2...♖xf2 e3† 3.♗d5 ♜xf2† 4.♙h1 ♜xe1† 5.♙h2 ♜f2† 6.♙h1 e2→.

Diagram 15-3

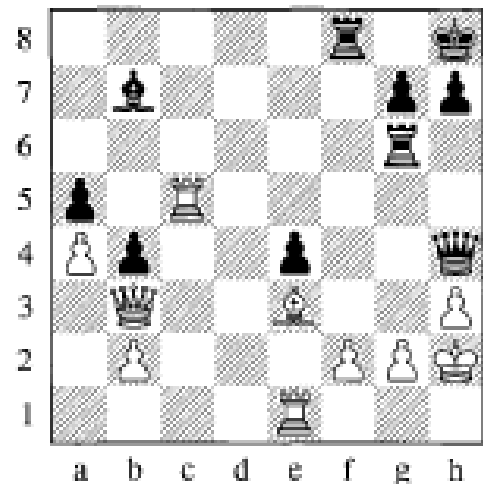


Diagram 15-4

**A.Denker – Gonzales**

1945

White is well placed here and finds an elegant way to finish the game.

1. ♙xf7†!

1...♜h4! h5 2.g4+- or 1.♙xh7! ♙xh7 2.♜h4† ♙g8 3.♜h6+- would also be good.

1...♙xf7

1...♜xf7 is followed by 2.♖xf7 ♙xf7 3.♜h6!! ♜g8 (3...♙xh6 4.f7†+-) 4.♖e1!+- and then ♖e8!

2. ♜h6!

Black resigned, on account of 2...♜g8 (2...♙xh6 3.f7† ♜f6 4.♖x(f6#) 3.♖xf7 ♜f8 4.♖d5+- ♜xh6 5.f7† ♜g7 6.f8=♜#.

Diagram 15-4

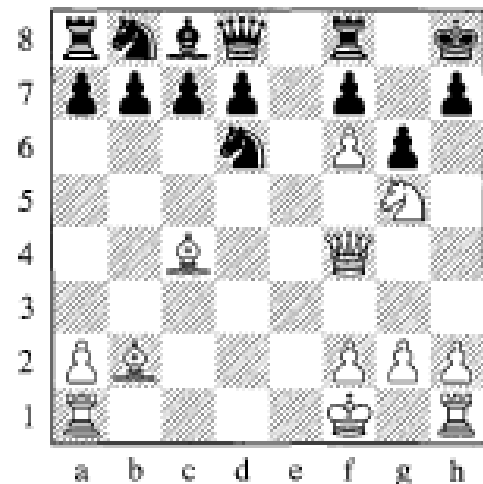


Diagram 15-5

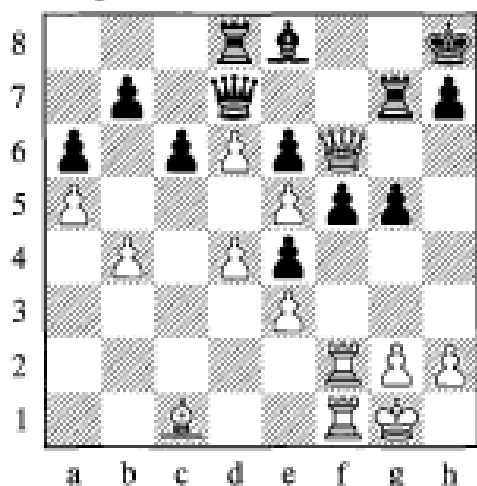
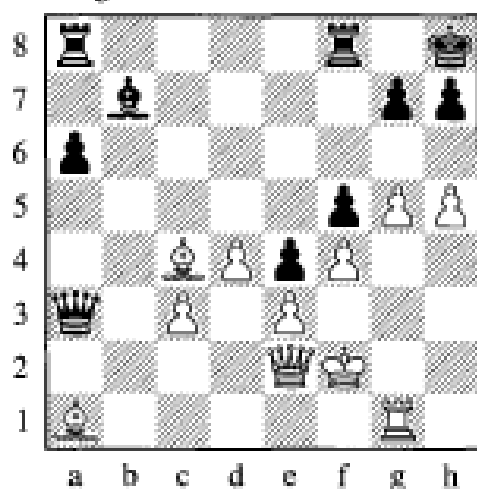


Diagram 15-6



### Opening a blocked diagonal

As we have already seen, sometimes a blocked diagonal can be opened. This very often happens after a pawn sacrifice, but more costly sacrifices are also possible in order, e.g. to activate a queen + bishop battery.

Diagram 15-5

**F. Englund – A. Perfiliev**

Stockholm 1926

1.d5!

White breaks open Black's defences.

1...cxd5 2.♖xf5! exf5

Black voluntarily allows the opening of the long diagonal. 2...♙g6 3.♖xg5± would have been better.

3.c6! ♜xd6 4.♙b2+ ♞dd7 5.cxd7 ♜xf6 6.dxe8=♜† 1-0

Diagram 15-6

**H. Mecking – J. Souza Mendes**

Rio Hondo 1966

White prepares for the opening of the long diagonal.

1.h6 g6

1...gxh6 is also answered by 2.♙e6!+.

2.♙e6 ♙c8 3.d5!

3.♙a2, intending c4 and d5, is also good.

3...♙xc6 4.♞d2!!

4.dxe6 allows Black to obtain counterplay by 4...♖f8.

4...♖f7?!

4...♙g8 would be a bit more stubborn: 5.♞d4 ♞e7 6.c4 ♙f7 7.dxe6† ♜xc6 8.♞g7† ♙e8 9.♞xh7 ♙c8 10.♙b1!+.

5.♞d4†

5.dxe6 is also good.

5...♙g8 6.c4+–

The queen and bishop battery gives White a powerful attack.

6...♙f8 7.dxe6 ♙f7 8.♞h8† ♙e7 9.♞g7?!

There is a simpler win by 9.♞xh7† (Kotov).

9...♙xc6?

9...♙e8 is a better defensive try, although White retains a strong attack with 10.♞e5.

10. ♖f6† ♔d7 11. ♜d1† ♕c7

11... ♕c8 loses immediately to 12. ♞c6†. While if 11... ♕e8, then 12. ♞c6† ♕e7 (12... ♖f7 13. ♜d7† ♜xd7 14. ♞xd7† ♞e7 15. ♞d5†+-) 13. ♜d4+-.

12. ♜e5†

1-0

### Combinations on other diagonals

And here are two more beautiful and instructive examples of combinations involving a diagonal.

**Diagram 15-7**

The end of a study by

**S. Kaminer**

1925

1. ♜d6!

After this quiet move, Black is in zugzwang. He must pin the g2-pawn and control both the e1-h4 diagonal and the d8-h4 diagonal. Even a piece as strong as the queen is overloaded with these numerous tasks.

1... ♞f4†

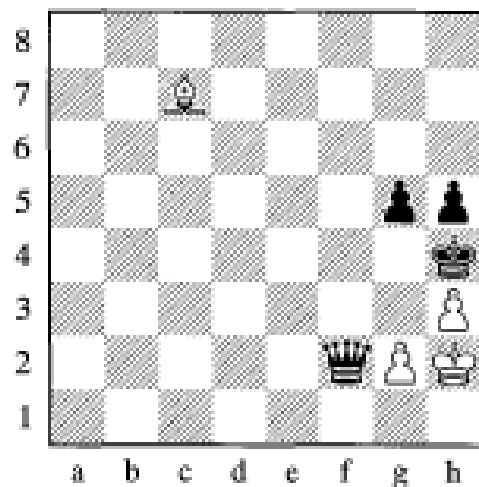
1... g4 2. ♜c7†+-; 1... ♞e2 2. ♜g3#; 1... ♞c1 2. g3†.

2. g3†!

A draw would be the outcome after 2. ♜xf4 gxf4 3. g3† fxg3† 4. ♕g2 ♕g5 5. ♕xg3-.

2... ♞xg3† 3. ♜xg3#

**Diagram 15-7**



**Diagram 15-8**

The end of a study by

**L. Kubbel**

1922

How can White stop the a-pawn?

1. d3!!

He prepares a beautiful mating attack!

1... a2 2. c4†! ♕c5

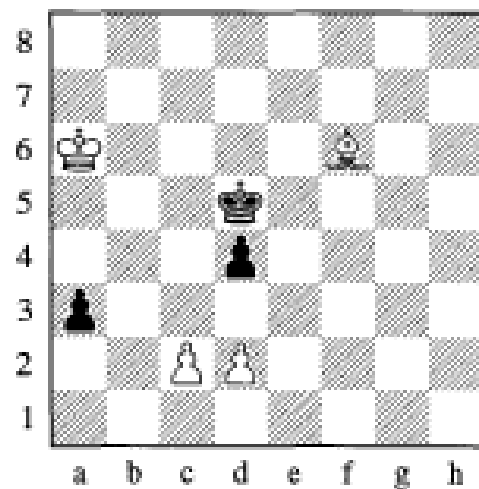
2... dxc3 clearly loses to 3. ♜xc3.

3. ♖b7!! a1=♞

King moves are simply met by 4. ♜xd4.

4. ♜c7#

**Diagram 15-8**



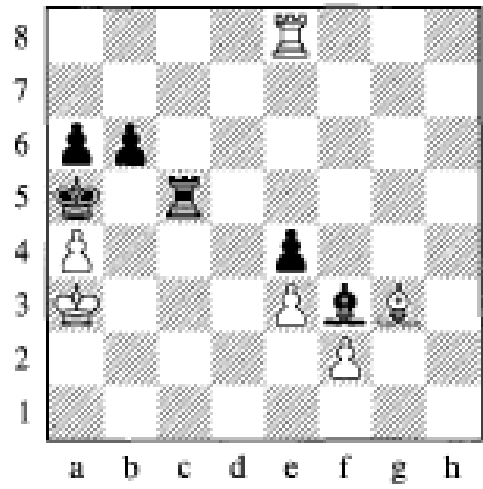
In the test which follows, please try to exploit the power of the pieces which move diagonally, the queen and the bishop.

# Exercises

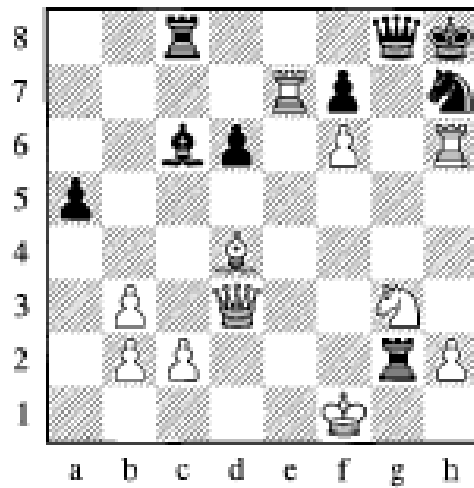
► Ex. 15-1 ◀ ★ △



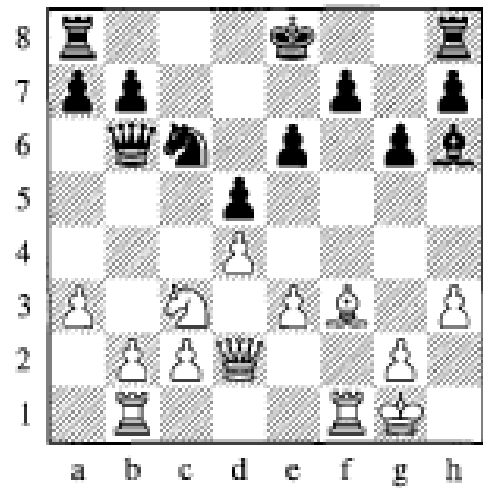
► Ex. 15-4 ◀ ★★ △



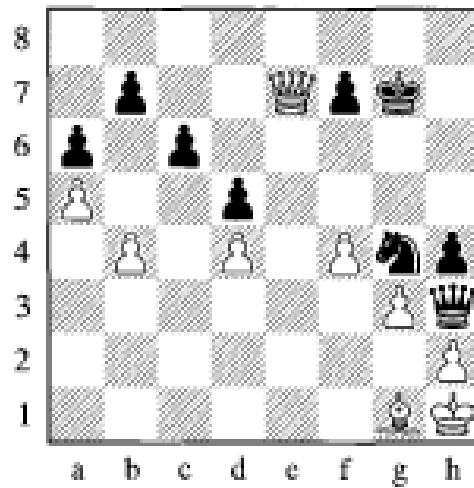
► Ex. 15-2 ◀ ★ △



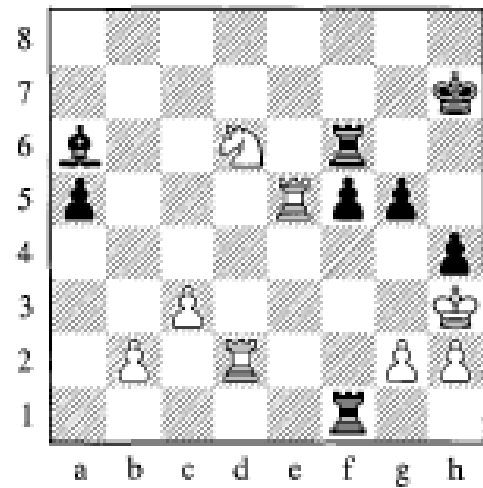
► Ex. 15-5 ◀ ★ ▼



► Ex. 15-3 ◀ ★ ▼



► Ex. 15-6 ◀ ★ ▼

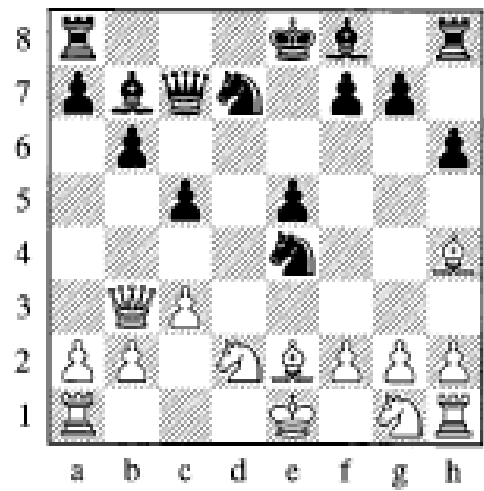


# Exercises

► Ex. 15-7 ◀ ★ ▼



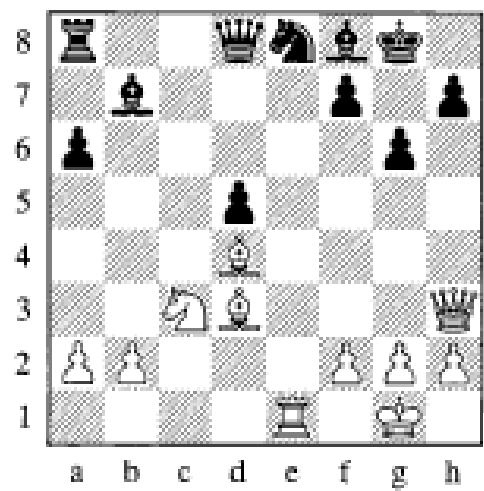
► Ex. 15-10 ◀ ★ △



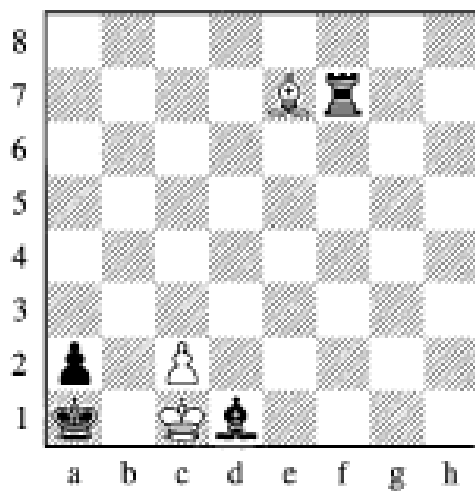
► Ex. 15-8 ◀ ★★ △



► Ex. 15-11 ◀ ★ △



► Ex. 15-9 ◀ ★★★ △



► Ex. 15-12 ◀ ★★ △

