



Wi-Fi Modem Router **N300**

WLM-2600



User Manual

Table of Contents

Introduction.....	3
Key Features.....	4
Package Contents.....	5
Cautions.....	6
Product Layout.....	7
Network + System Requirements.....	10
Setup your Router.....	11
Setup your Computer.....	12
Login to your Router.....	15
Configure your Internet connection.....	16
Status.....	19
TOOLBOX.....	43
Addendum: Declaration of Conformity.....	47



Revision 1.1

© Sitecom Europe BV 2015

Note: All the information contained in this manual was correct at the time of publication.

However, as our engineers are always updating and improving the product, your device's software may have a slightly different appearance or modified functionality than presented in this manual.

Introduction

Congratulations on your purchase of the WLM-2600 Wireless ADSL2+ Modem. This modem is fully compliant with 802.11b, 802.11g and 802.11n. This modem provides the best performance when used in combination with 802.11n client adapters.

The WLM-2600 is not only a Modem or Wireless Access Point, but can also be used to connect wired Ethernet devices at 10/100 Mbit speeds.

For data protection and privacy, the WLM-2600 can encode all wireless transmissions with WEP, WPA or WPA2 encryption. By default, the modem is secured with a WPA2 (AES) encryption key. (The WPA2-key is printed on the label underneath the modem.)

With a built-in DHCP Server & powerful SPI firewall the WLM-2600 protects your computers against intruders and known Internet attacks, and also provides safe VPN pass-through.

Key Features

Features	Advantages
Incredible Data Rate up to 300Mbps*	Heavy data payloads such as MPEG video streaming
IEEE 802.11n Compliant and backwards compatible with 802.11b/g	Fully Interoperable with IEEE 802.11b / IEEE802.11g compliant devices with legacy protection
Four 10/100 Mbps Switch Ports (Auto-Crossover)	Scalability, extend your network.
Firewall supports Virtual Server Mapping, DMZ, IP Filter, ICMP Blocking, SPI	Avoids the attacks of Hackers or Viruses from Internet
Support 802.1x authenticator, 802.11i (WPA/WPA2, AES), VPN pass-through	Provide mutual authentication (Client and dynamic encryption keys to enhance security

* Theoretical wireless signal rate based on IEEE standard of 802.11a, b, g, n chipset used. Actual throughput may vary. Network conditions and environmental factors lower actual throughput rate. All specifications are subject to change without notice.

Package Contents

Open the package carefully, and make sure that none of the items listed below are missing. Do not discard the packing materials, in case of return; the unit must be shipped back in its original package.

- The WLM-2600 WiFi Modem Router N300
- A 110V~240V to 12V 1A Switching Power Adapter
- A Quick Install Guide
- An UTP cable
- A RJ11 cable

Cautions

This router's design and manufacturer has your safety in mind. In order to safely and effectively use this router, please read the following before usage.

Usage Cautions

The user should not modify this router. The environmental temperature should be within +5 ~ +35 degrees Celsius.

Power

The router's power voltage is DC 12V 1A.

When using this router, please connect the supplied AC adapter or AC adapter cable to the router's power jack. When placing the adapter cable, make sure it can't get damaged or be subject to pressure. To reduce the risk of electric shock, unplug the adapter first before cleaning it. Never connect the adapter to the router in a humid or dusty area. Do not replace the adapter or cable's wire or connector.

Repair

If the router has a problem, you should take it to an appointed repair center and let the specialists do the repair. Never repair the router yourself, you might damage the router or endanger yourself.

Disposing of the Router

When you dispose of the router, be sure to dispose it appropriately. Some countries may regulate disposal of an electrical device, please consult with your local authority.

Others

When using this router, please do not let it come into contact with water or other liquids. If water is accidentally spilled on the router, please use a dry cloth to absorb the spillage. Electronic products are vulnerable, when using please avoid shaking or hitting the router, and do not press the buttons too hard.

- Do not let the router come into contact with water or other liquid.
- Do not disassemble, repair or change the design of the router; any damage done will not be included in the repair policy.
- Avoid hitting the router with a hard object, avoid shaking the router and stay away from magnetic fields.
- If during electrostatic discharge or a strong electromagnetic field the product will malfunction, unplug the power cable. The product will return to normal performance the next time it is powered on.

Product Layout



Port	Description
ADSL (Grey)	Connect your ADSL cable to this port
LAN (Yellow)	Connect your PCs or network devices to these ports
Power connector	Connect the 12V DC adapter to this port

Backlabel and Network Details Folder

The Network Details Folder describes the IP address, login details, network name, security code and OPS button functionality.

All your network details in one safe place

Wi-Fi Modem Router N300

WLM-2600 v1001

NEW network name

NEW password

If you have changed your network name or password you can write it down here.

Do you want to customize your network names and passwords? Easily login to your modem router:

- Type the following address in your browser:
`http://sitecom.modem`
- Log-in to your user-interface:
Username: `admin`
Password:
- Go to **2.4GHz WiFi**
- Go to **Wireless Settings** to change your network name
Go to **Security Settings** to change your password

Check FAQs online for instructions in your local language www.sitecom.com/helpdesk

Reset your modem router with one push of a button:

Press **2** sec. = OPS mode
Press **15+** sec. = Factory default

Button	Description
OPS BUTTON	Press 0-5 seconds for OPS mode Press 15 Seconds to reset the router to factory defaults.

LED Definition



As shown from the top to the bottom.

Port	Description
Power (Red)	Shows the device is turned on.
DSL (Green)	Shows the DSL signal is synchronized.
Internet (Blue)	Shows the Internet connection is active.
LAN (Blue)	Shows the cable is connected.
LAN (Blue)	Shows the cable is connected.
LAN (Blue)	Shows the cable is connected.
LAN (Blue)	Shows the cable is connected.
2.4GHz (Blue)	Shows 2.4GHz WiFi activity.
OPS (White)	Shows OPS activity.

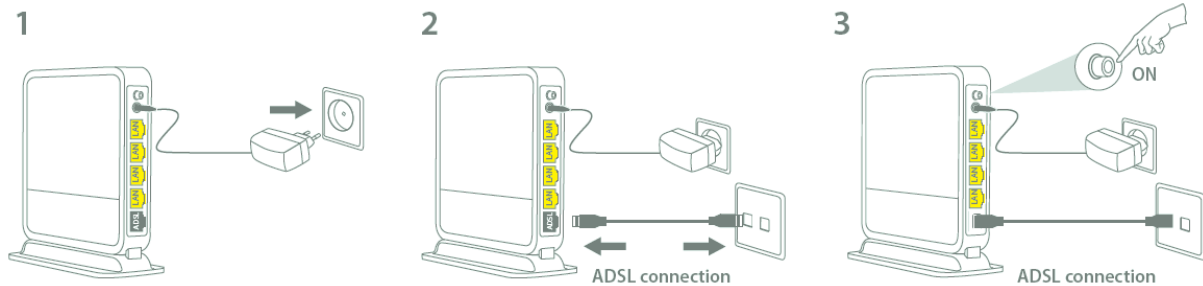
Network + System Requirements

To begin using the router, make sure you meet the following as minimum requirements:

- PC/Notebook.
- Operating System – Microsoft Windows XP/VISTA/7 or Mac OSX
- 1 Free Ethernet port.
- WiFi card/USB dongle (802.11 a/b/g/n) – optional.
- PC with a Web-Browser (Internet Explorer, Safari, Firefox, Opera)
- Ethernet compatible CAT5e cables.

Setup your Router

You can place the router on a desk or other flat surface, or you can mount it on a wall. For optimal performance, place your router in the center of your home (or your office) in a location that is away from any potential source of interference, such as a metal wall or microwave oven. This location must be close to a power connection and your ADSL connection.



Connect the supplied power-adaptor to the power inlet port and connect it to a wall outlet. Switch the router on by flipping the switch on the back of the device. The router automatically enters the self-test phase. During self-test phase, the Power LED will be lit continuously to indicate that this product is in normal operation.

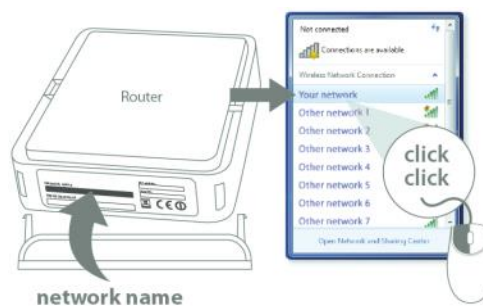
Setup your Computer

Windows, Manual Connection

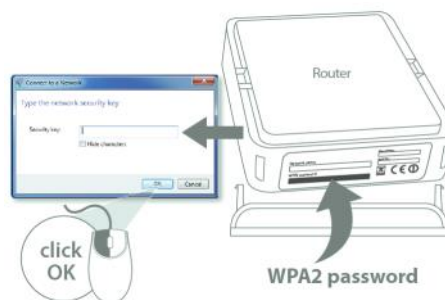
- Click on the icon for wireless connectivity. This is usually located in the System Tray, next to the clock.



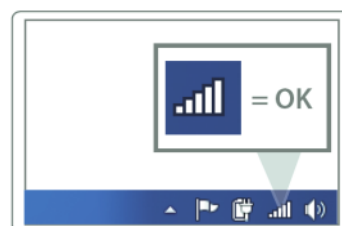
- Select the Sitecom network. The correct network name can be found on the sticker on bottom of the router, or in the Network Details Folder.



- Fill in the password for the wireless network. The correct password can be found on the sticker on the bottom of the router, or in the Network Details Folder.



- Wait for the icon to display that it's connected to the network.

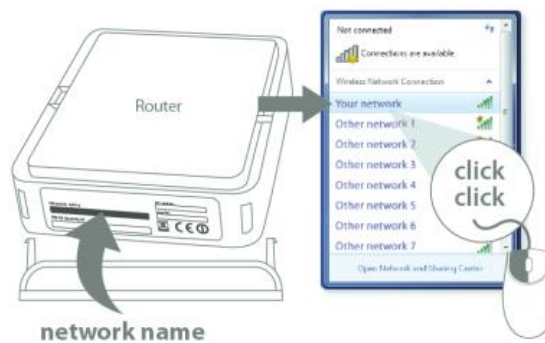


Windows, OPS Connection

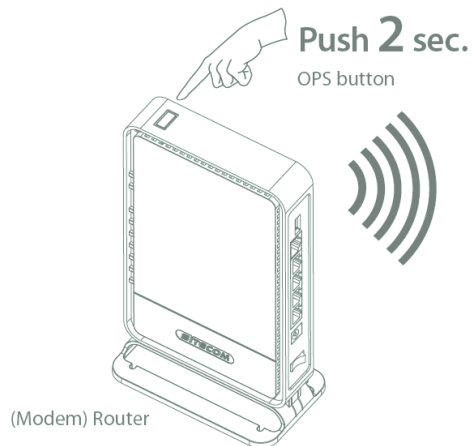
- Click on the icon for wireless connectivity. This is usually located in the System Tray, next to the clock.



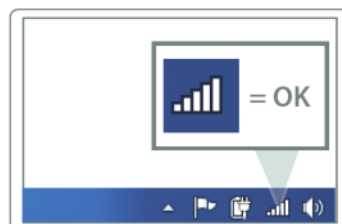
- Select the Sitecom network. The correct network name can be found on the sticker on bottom of the router, or in the Network Details Folder.



- Push the OPS Button on the router. Keep the button pushed for 0-5 seconds.

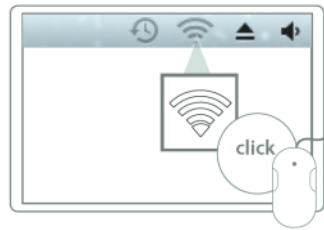


- Wait for the icon to display that it's connected to the network.

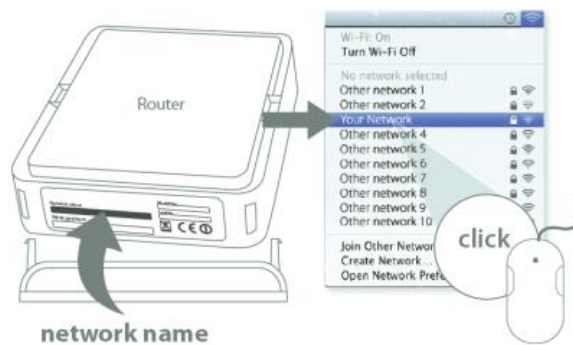


Mac OSX

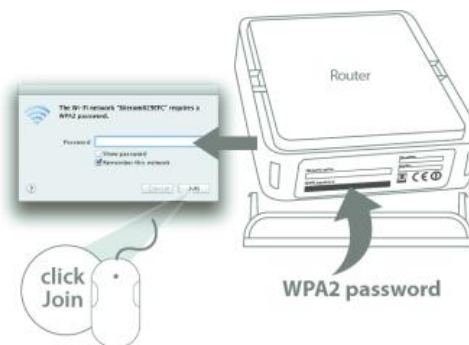
- Click on the icon for wireless connectivity. This is usually located in the System Tray, next to the clock.



- Select the Sitecom network. The correct network name can be found on the sticker on bottom of the router, or in the Network Details Folder.



- Fill in the password for the wireless network. The correct password can be found on the sticker on the bottom of the router, or in the Network Details Folder.



- Wait for the icon to display that it's connected to the network.



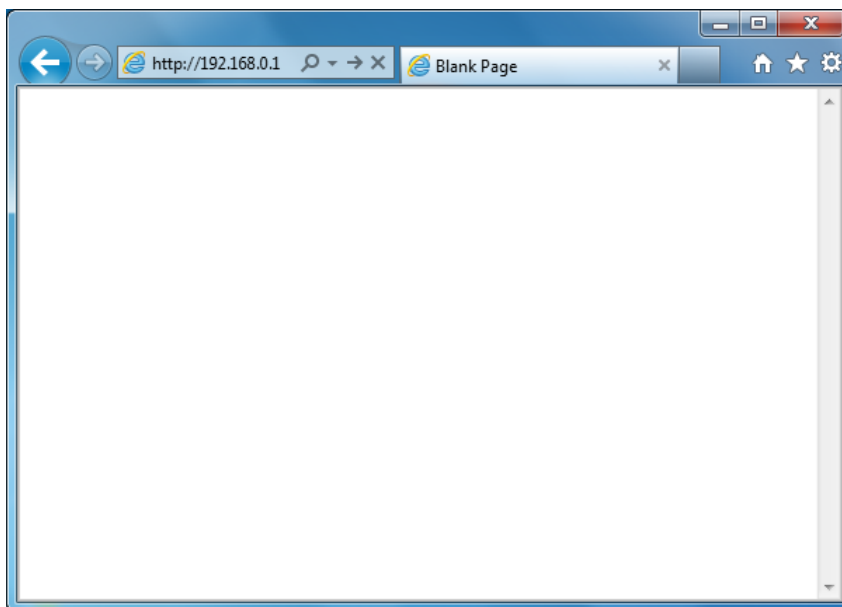
Login to your Router

LOGIN procedure

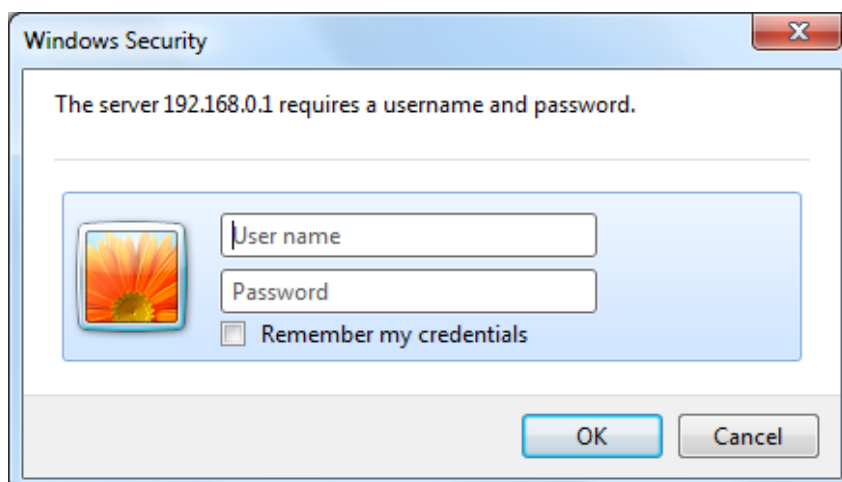
- OPEN your browser (e.g. Internet Explorer).



- Type <http://sitecom.modem> or <http://192.168.0.1> in the address bar and press [Enter].



- Type user name and password. The default username is admin, the password can be found on the back label on the bottom of your router.



- Click OK.
- You will see the home page of the WLM-2600.

Configure your Internet connection

From the menu, select "Internet Settings".

Wi-Fi Router X3 N300



Status | Internet Settings | 2.4GHz WiFi | Firewall | Advanced Settings | Toolbox | Choose your language ▾

IPv4 Settings

Use this section to configure your IPv4 Connection type. If you are unsure of your connection method, please contact your Internet Service Provider.

IPv4 Connection Type

Choose the IPv4 mode to be used by the router for the internet connection.

Login Method :	Dynamic IP Address ▾
Hostname :	<input type="text"/>
MAC Address :	000000000000 <input type="button" value="Clone MAC address"/>

Depending on the chosen setting, you may need to enter your user name and password, MAC address or hostname in the following window. After you have entered the correct information, click **Apply**.

IPv4 Settings

Use this section to configure your IPv4 Connection type. If you are unsure of your connection method, please contact your Internet Service Provider.

IPv4 Connection Type

Choose the IPv4 mode to be used by the router for the internet connection.

Login Method :	PPP over Ethernet ▾
Username :	<input type="text"/>
Password :	<input type="text"/>
Service :	<input type="text"/>
MTU :	1492 (512<=MTU Value<=1492)
Connection Type :	Keep connection ▾ <input type="button" value="Connect"/> <input type="button" value="Disconnect"/>
Idle Time :	10 (1-1000 Minutes)

IPv6 Configuration

The IPv6 (Internet Protocol version 6) section is where you configure your IPv6 Connection type.

IPv6 Connection Type

There are several connection types to choose from: Static IPv6, Autoconfiguration, 6RD and Link-local only. If you are unsure of your connection method, please contact your IPv6 Internet Service Provider.

Static IPv6 Mode

This mode is used when your ISP provides you with a set IPv6 addresses that does not change. The IPv6 information is manually entered in your IPv6 configuration settings. You must enter the IPv6 address, Subnet Prefix Length, Default Gateway, Primary DNS Server and Secondary DNS Server. Your ISP provides you with all this information.

IPv4 Settings IPv6 Settings

Use this section to configure your IPv6 Connection type. If you are unsure of your connection method, please contact your Internet Service Provider.

IPv6 Connection Type

Choose the IPv6 mode to be used by the router for the internet connection.

IPv6 Connection :	Static IPv6
Use Link-Local Address :	<input type="checkbox"/>
IPv6 Address :	<input type="text"/>
Subnet Prefix Length :	<input type="text" value="0"/>
Default Gateway :	<input type="text"/>
Primary IPv6 DNS Address :	<input type="text"/>
Secondary IPv6 DNS Address :	<input type="text"/>
LAN IPv6 Address :	<input type="text"/> /64
LAN IPv6 Link-Local Address :	FE80::66D1:A3FF:FE03:8776/64
Enable automatic IPv6 address assignment :	<input checked="" type="checkbox"/>
Autoconfiguration Type :	SLAAC + RDNSS
Router Advertisement Lifetime :	<input type="text" value="1440"/> (minutes)

6RD Mode

In the 6RD mode, no additional configuration is necessary.

IPv4 Settings IPv6 Settings

Use this section to configure your IPv6 Connection type. If you are unsure of your connection method, please contact your Internet Service Provider.

IPv6 Connection Type

Choose the IPv6 mode to be used by the router for the internet connection.

IPv6 Connection :	6RD
6RD Configuration :	<input checked="" type="radio"/> 6RD DHCPv4 Option <input type="radio"/> Manual Configuration
6RD IPv6 Prefix :	2a00:8640:1008:c000:: /50
IPv4 Address :	10.0.0.10 Mask Length : 26
IPv6 Prefix Arrange :	2A00:8640:1008:CA00::/56
Tunnel Link-Local Address :	FE80::0A00:000A/64
6RD Border Relay IPv4 Address :	37.77.57.129
Primary IPv6 DNS Address :	
Secondary IPv6 DNS Address :	
LAN IPv6 Address :	--- /64
LAN IPv6 Link-Local Address :	FE80::66D1:A3FF:FE03:8776/64
Enable automatic IPv6 address assignment :	<input checked="" type="checkbox"/>
Autoconfiguration Type :	SLAAC + RDNSS
Router Advertisement Lifetime :	1440 (minutes)

Apply Cancel

Link-local Mode

The Link-local address is used by nodes and routers when communicating with neighboring nodes on the same link. This mode enables IPv6-capable devices to communicate with each other on the LAN side.

IPv4 Settings IPv6 Settings

Use this section to configure your IPv6 Connection type. If you are unsure of your connection method, please contact your Internet Service Provider.

IPv6 Connection Type

Choose the IPv6 mode to be used by the router for the internet connection.

IPv6 Connection :	Link-local only
WAN IPv6 Link-Local Address :	FE80::66D1:A3FF:FE03:8778/64
LAN IPv6 Link-Local Address :	FE80::66D1:A3FF:FE03:8776/64

Apply Cancel

Status

The pages in the status section provide you general information about the operational status of your device.

Status

Wi-Fi Modem Router X3 N300



[Home](#) | [Wizard](#) | [Basic Settings](#) | [2.4G WiFi](#) | [Advanced Settings](#) | [Firewall](#) | [Toolbox](#) |

Language ▾

Status | [Statistics](#) | [DHCP List](#) | [Diagnostics](#)

ADSL Router Status

This page shows the current status and some basic settings of the device.

System Info

Hardware Version :	WLM-3600
Software Version :	1.00
Model Name :	WLM-3600/v1001

LAN Configuration

MAC Address :	64:d1:a3:07:a6:9d
IP Address :	192.168.0.1
Subnet Mask :	255.255.255.0
DHCP Server :	Enable

The System status section allows you to monitor the current status of your modem/router: the UP time, hardware information, serial number as well as firmware version information is displayed here. The page also shows extensive information concerning the ADSL status and current settings.

Statistics

Wi-Fi Modem Router X3 N300



[Home](#) | [Wizard](#) | [Basic Settings](#) | [2.4G WiFi](#) | [Advanced Settings](#) | [Firewall](#) | [Toolbox](#) |

Language ▾

[Status](#) | [Statistics](#) | [DHCP List](#) | [Diagnostics](#)

Statistics

This information reflects the current status of your all connection.

WLAN

Interface	Transmitted				Received			
	Bytes	Pkts	Errs	Tx drop	Bytes	Pkts	Errs	Rx drop
Sitecom07A69E	0	582	0	0	1561194	7147	0	0

Ethernet LAN

Interface	Transmitted				Received			
	Bytes	Pkts	Errs	Tx drop	Bytes	Pkts	Errs	Rx drop

ADSL WAN

Service	Protocol	Transmitted				Received			
		Bytes	Pkts	Errs	Tx drop	Bytes	Pkts	Errs	Rx drop

[Refresh](#)

You can view statistics on the processing of IP packets on the networking interfaces. You will not typically need to view this data, but you may find it helpful when working with your ISP to diagnose network and Internet data transmission problems. To display statistics for any new data, click "Refresh".

DHCP List

Wi-Fi Modem Router X3 N300



[Home](#) | [Wizard](#) | [Basic Settings](#) | [2.4G WiFi](#) | [Advanced Settings](#) | [Firewall](#) | [Toolbox](#) |

Language ▾

[Status](#) | [Statistics](#) | [DHCP List](#) | [Diagnostics](#)

Active DHCP Clients table

This table shows the assigned IP Address, corresponding MAC Address and expiration time of the connected clients.

#	Hostname	MAC Address	IP Address	Expiration time
1	EdgePC	c8:0a:a9:10:bf:0c	192.168.0.100	85498

This page shows all DHCP clients (LAN PCs) currently connected to your network. The table shows the assigned IP address, MAC address and expiration time for each DHCP leased client.

Diagnostics

Wi-Fi Modem Router X3 N300



[Home](#) | [Wizard](#) | [Basic Settings](#) | [2.4G WiFi](#) | [Advanced Settings](#) | [Firewall](#) | [Toolbox](#) |

Language ▾

[Status](#) | [Statistics](#) | [DHCP List](#) | [Diagnostics](#)

Diagnostics test

This page offers some diagnostic tool to test the connection.

Virtual Circuit : PPPoA_0_2 ▾

Local Network

Testing Ethernet LAN 1 Connection : FAIL

Testing Ethernet LAN 2 Connection : FAIL

Testing Ethernet LAN 3 Connection : PASS

Testing Ethernet LAN 4 Connection : FAIL

DSL Service Provider

Testing ADSL Synchronization : FAIL

Testing ATM OAM F5 Segment Loopback : FAIL

Testing ATM OAM F5 End to End Loopback : FAIL

The Diagnostics page allows you to test the current configuration.

Click 'Start' to let the modem router perform several tasks to verify if the connection is operational.

Configuration Wizard

Wi-Fi Modem Router X3 N300



Home | **Wizard** | Basic Settings | 2.4G WiFi | Advanced Settings | Firewall | Toolbox |

Language ▾

Automatic detection Internet settings

Click the "Start Scan" button to automatically start scanning your ADSL configuration settings, or click "Skip Scan" to select your ADSL settings manually.

Click Wizard to configure the modem. The Setup wizard will now be displayed; check that the adsl line is connected and click "Start Scan" to do an automatic detection of the ADSL settings. If you want to configure the modem manually you can click "Skip Scan".

Wi-Fi Modem Router X3 N300



Home | **Wizard** | Basic Settings | 2.4G WiFi | Advanced Settings | Firewall | Toolbox |

Language ▾

Select your country and ISP

Country :	-- Select Country -- ▾
ISP :	-- Choose your provider -- ▾

Select your country from the Country list. Select your internet provider. Click Next.

Wi-Fi Modem Router X3 N300



Home | **Wizard** | Basic Settings | 2.4G WiFi | Advanced Settings | Firewall | Toolbox |

Language ▾

PPP Settings

Username :	<input type="text"/>
Password :	<input type="text"/>

Depending on the chosen provider, you may need to enter your user name and password or hostname in the following window. After you have entered the correct information, click Next.

Click Finish to complete the configuration.

Basic Settings

LAN Settings

Wi-Fi Modem Router X3 N300



Home | Wizard | **Basic Settings** | 2.4G WiFi | Advanced Settings | Firewall | Toolbox |

Language ▾

LAN Settings

DHCP Settings

WAN Settings

LAN Settings

This page is used to configure the LAN interface of ADSL Router. Here you may change the setting for IP addresses, subnet mask, etc.

IP Address :	<input type="text" value="192.168.0.1"/>
Subnet Mask :	<input type="text" value="255.255.255.0"/>
Alias IP Address :	<input type="text" value="192.168.2.1"/>
Alias IP Subnet Mask :	<input type="text" value="255.255.255.252"/>
IGMP Snooping :	<input type="radio"/> Enable <input checked="" type="radio"/> Disable
Dynamic Route :	OFF ▾ Direction <input type="text" value="Both"/> ▾

IPv6 Address

IPv6 Address :	<input type="text" value="fe80::1"/> / <input type="text" value="64"/>
----------------	--

This page is used to configure the LAN interface of your ADSL Router. You can set IP address, subnet mask, and IGMP Snooping or modify the IPv6 address range .

DHCP Settings

Wi-Fi Modem Router X3 N300



Home | Wizard | **Basic Settings** | 2.4G WiFi | Advanced Settings | Firewall | Toolbox

Language ▾

LAN Settings

DHCP Settings

WAN Settings

DHCP Settings

This page is used to configure the DHCP Server and DHCP Relay Settings.

DHCP Mode :	<input type="radio"/> None <input checked="" type="radio"/> DHCP Server <input type="radio"/> DHCP Relay configuration
Start IP Address :	<input type="text" value="192.168.0.100"/>
End IP Address :	<input type="text" value="192.168.0.200"/>
Max lease time :	<input type="text" value="86400"/> Seconds (0 sets to the default value of 259200)
Domain Name :	<input type="text" value="sitecom.modem"/>
DNS Relay :	<input checked="" type="radio"/> Enable <input type="radio"/> Disable
Primary DNS :	<input type="text" value="80.58.61.250"/>
Secondary DNS :	<input type="text" value="80.58.61.254"/>

DHCPv6

DHCP6 Server :	<input type="radio"/> Disable <input checked="" type="radio"/> Enable
LAN Address Config Mode :	<input checked="" type="radio"/> Stateless <input type="radio"/> Statefull
Interface ID :	<input type="text" value="1"/> ~ <input type="text" value="ff"/>
Preferred Lifetime :	<input type="text" value="14400"/>
Valid Lifetime :	<input type="text" value="86400"/>
IPv6 DNS Relay :	<input checked="" type="radio"/> Enable <input type="radio"/> Disable
Primary DNS :	<input type="text" value="2111:3c:123:0:c:135:9a:a15"/>
Secondary DNS :	<input type="text" value="2111:3c:123:0:3bc6:a:9cc:518"/>

Prefix

Get Prefix Mode :	<input checked="" type="radio"/> From WAN <input type="radio"/> Static
Prefix/Length :	<input type="text"/> / <input type="text" value="64"/>

Add DHCP Reservation

#	IP Address	MAC Address	Edit	Drop
<input type="button" value="Add"/>				

www.sitecom.com | © 1996 - 2012 Sitecom Europe BV, all rights reserved

You can configure your network and the router to use the Dynamic Host Configuration Protocol (DHCP). This page allows you to select the DHCP mode that this router will support.

There are two different DHCP Modes: DHCP Server and DHCP Relay. When the router is acting as DHCP server, please configure the router in the "DHCP Server" page; while acting as DHCP Relay, you can setup the relay in the "DHCP Relay" page.

WAN Settings

Wi-Fi Modem Router X3 N300



Home | Wizard | **Basic Settings** | 2.4G WiFi | Advanced Settings | Firewall | Toolbox |

Language ▾

LAN Settings | DHCP Settings | **WAN Settings**

WAN Settings

This page is used to configure basic WAN settings like ADSL and DNS Settings.

Status :	<input checked="" type="radio"/> Enable <input type="radio"/> Disable
VPI :	<input type="text" value="8"/> (range: 0-255)
VCI :	<input type="text" value="36"/> (range: 32-65535)

QoS

ATM QoS :	<input type="text" value="ubr"/>
PCR :	<input type="text" value="0"/> cells/second
SCR :	<input type="text" value="0"/> cells/second
MBS :	<input type="text" value="0"/> cells

Encapsulation

ISP :	<input checked="" type="radio"/> Dynamic IP Address <input type="radio"/> Static IP Address <input type="radio"/> IPoA <input type="radio"/> PPPoE <input type="radio"/> PPPoA <input type="radio"/> Bridge Mode
-------	---

Dynamic IP

IP Common Options

Service Type :	<input type="text" value="Internet"/>
Encapsulation :	<input type="text" value="1483 Routed IP LLC"/>
802.1Q VLAN ID :	<input type="text" value="0"/> (0 = disable, 1 - 4094)
Priority :	<input type="text" value="0"/> (0 - 7)
NAT :	<input type="text" value="Enable"/>
Dynamic Route :	<input type="text" value="OFF"/> Direction: <input type="text" value="Both"/>
IGMP Proxy :	<input type="radio"/> Enable <input checked="" type="radio"/> Disable
Service Name :	<input type="text" value="DHCP_0_3"/>

www.sitecom.com | © 1996 - 2012 Sitecom Europe BV, all rights reserved

This page allows you to manually configure the ADSL/WAN settings. The settings on this page require some knowledge concerning the WAN configuration. We advise less-experienced users to configure the WAN settings using the Wizard.

VPI (Virtual Path Identifier) and VCI (Virtual Channel Identifier) define a virtual circuit.

VPI: The valid range for the VPI is 0 to 255. Enter the VPI assigned to you. This field may already be configured.

VCI: The valid range for the VCI is 32 to 65535. Enter the VCI assigned to you. This field

may already be configured.

ATM QoS: Select CBR to specify fixed (always-on) bandwidth for voice or data traffic. Select UBR for applications that are non-time sensitive, such as e-mail. Select VBR for burst traffic and bandwidth sharing with other applications.

PCR: Divide the DSL line rate (bps) by 424 (the size of an ATM cell) to find the Peak Cell Rate (PCR). This is the maximum rate at which the sender can send cells.

SCR: The Sustain Cell Rate (SCR) sets the average cell rate (long-term) that can be transmitted.

MBS: Maximum Burst Size (MBS) refers to the maximum number of cells that can be sent at the peak rate. Type the MBS, which is less than 65535

Encapsulation:

Select the encapsulation type your ISP uses from the Encapsulation list. Choices vary depending on what you select in the Mode field. If you select Bridge in the Mode field, select 1483 Bridged IP. If you select Routing in the Mode field, select PPPoA, 1483 Bridged IP, 1483 Router IP or PPPoE.

PPPoE/PPPoA

User Name: Enter the user name exactly as your ISP assigned.

Password: Enter the password associated with the user name above.

Encapsulation: select Bridge in the Mode field, select either PPPoA or RFC 1483. Select Routing in the Mode field, select PPPoA, RFC 1483, ENET ENCAP or PPPoE.

Multiplex: Select the method of multiplexing used by your ISP. Choices are VC or LLC.

Connection: The schedule rule(s) have priority over your Connection settings.

Always on: Select Always on Connection when you want your connection up all the time.

Connect on Demand: Select Connect on Demand when you don't want the connection up all the time and specify an idle time-out in the Max Idle Timeout field

Get IP Address: Choose Static or Dynamic

Static IP Address: Enter the IP address of ADSL Router in dotted decimal notation, for example, 192.168.1.254 (factory default).

IP Subnet Mask: The default is 255.0.0.0. User can change it to other such as 255.255.255.0. Type the subnet mask assigned to you by your ISP (if given).

Gateway: You must specify a gateway IP address (supplied by your ISP) when you use 1483 Bridged IP in the Encapsulation field in the previous screen.

Network Address Translation: Select None, Many to One or Many to Many from the drop-down list box. Refer to the NAT chapter for more details.

RIP Version: Select the RIP version from RIP-1, RIP-2B and RIP-2M.

RIP Direction: Select the RIP direction from None, Both, In Only and Out Only.

Multicast: IGMP (Internet Group Multicast Protocol) is a network-layer protocol used to establish membership in a Multicast group - it is not used to carry user data.

2.4GHz WiFi

Wi-Fi Modem Router X3 N300



Home | Wizard | Basic Settings | **2.4G WiFi** | Advanced Settings | Firewall | Toolbox |

Language ▾

Wireless Settings

Security Settings

Wireless ACL

Advanced Wireless

Wireless WDS

Wireless WPS

Wireless Basic Settings

This page is used to configure the parameters for the wireless LAN like wireless encryption settings, channel and band.

Access Point :	<input checked="" type="radio"/> Enable <input type="radio"/> Disable
Country :	Netherlands ▾
Channel :	Auto Scan(recommended) ▾ Current Channel : <input type="text" value="8"/>
Wireless Mode :	802.11b+g+n ▾
Ap Isolation :	Off ▾

11n Settings

Channel Width :	40M Minus ▾
-----------------	-------------

SSID Settings

SSID index :	1 ▾
SSID :	Sitecom07A69E
Visibility Status :	<input checked="" type="radio"/> Visible <input type="radio"/> Invisible
Max User Index :	16
User Isolation :	Off ▾

Save Cancel

www.sitecom.com | © 1996 - 2012 Sitecom Europe BV, all rights reserved

This section provides the wireless network settings for your router. You can enable and configure the wireless AP function here.

SSID: The SSID (up to 32 printable ASCII characters) is the unique name identified in a WLAN. The ID prevents the unintentional merging of two co-located WLANs.

Channel Width: Set channel width of wireless radio. Do not modify default value if you don't know what it is, default setting is 'Auto 20/40 MHz'.

Channel Number: It is the radio channel used by the wireless LAN. All devices in the same wireless LAN should use the same channel. Please select the country you are located and designate a channel that the router will use. If you want to let the router automatically to find an available channel with the highest signal strength, please select "Auto".

When you finish, click 'Save' to save the settings made and restart the router so the settings will take effect after it reboots.

Security Settings

Wi-Fi Modem Router X3 N300



Home | Wizard | Basic Settings | **2.4G WiFi** | Advanced Settings | Firewall | Toolbox

Language ▾

Wireless Settings

Security Settings

Wireless ACL

Advanced Wireless

Wireless WDS

Wireless WPS

Wireless Security Settings

This page allows you to change security settings.

Wireless SSID :	Sitecom07A69E ▾
Authentication Type :	WPA2 only ▾

WPA2

WPA Mode :	WPA2-Personal ▾
Encryption :	AES ▾
Group Key Update Interval :	100 (60 - 65535)
Pre-Shared Key :	C75232B5 (8-63 characters or 64 Hex strings)

Save Cancel

This router provides complete wireless LAN security functions, include WEP, IEEE 802.1x, IEEE 802.1x with WEP, WPA with pre-shared key and WPA with RADIUS. With these security functions, you can prevent your wireless LAN from illegal access. Please make sure your wireless stations use the same security function.

Encryption: You can choose "None" to disable the encryption or select "WEP", "WPA(TKIP)", "WPA2(AES)" or "WPA2 Mixed" mode for security. When "WEP" is enabled, please click "Set WEP Key" button to choose the default key and set the four sets of WEP keys.

WEP: WEP is less level of security than WPA. WEP supports 64-bit and 128-bit key lengths to encrypt the wireless data.

WPA(TKIP): WPA uses Temporal Key Integrity Protocol (TKIP) for data encryption. TKIP utilized a stronger encryption method and incorporates Message Integrity Code (MIC) to provide protection against hackers.

WPA2(AES): WPA2, also known as 802.11i, uses Advanced Encryption Standard (AES) for data encryption. AES utilized a symmetric 128-bit block data encryption.

WPA Mixed: The router supports WPA (TKIP) and WPA2 (AES) for data encryption. The actual selection of the encryption methods will depend on the clients.

Use 802.1x Authentication: IEEE 802.1x is an authentication protocol. Every user must use a valid account to login to this wireless router before accessing the wireless LAN. The authentication is processed by a RADIUS server. Check this box to authenticates user by IEEE 802.1x.

WEP-64Bits: WEP is less level of security than WPA. WEP supports 64-bit and 128-bit key lengths to encrypt the wireless data. The longer key length will provide higher security. When "WEP-64Bits" is selected, you have to enter exactly 5 ASCII characters ("a-z" and "0-9") or 10 hexadecimal digits ("0-9", "a-f") for each Key (1-4).

WEP-128Bits: When "WEP-128Bits" is selected, you have to enter exactly 13 ASCII characters ("a-z" and "0-9") or 26 hexadecimal digits ("0-9", "a-f") for each Key (1-4).

WPA Authentication Mode: There are two types of authentication mode for WPA.

Enterprise (RADIUS): It uses an external RADIUS server to perform user authentication. To use RADIUS, enter the IP address of the RADIUS server, the RADIUS port (default is 1812) and the shared secret from the RADIUS server. Please refer to "Authentication RADIUS Server" setting below for RADIUS setting.

Personal (Pre-Shared Key): Pre-Shared Key authentication is based on a shared secret that is known only by the parties involved. To use WPA Pre-Shared Key, select key format and enter a password in the "Pre-Shared Key Format" and "Pre-Shared Key" setting respectively.

Pre-Shared Key Format: You may select to select Passphrase (alphanumeric format) or Hexadecimal Digits (in the "A-F", "a-f" and "0-9" range) to be the Pre-shared Key. For example:

Passphrase: "iamguest"

Hexadecimal Digits: "12345abcde"

Pre-Shared Key: Please enter 8-63 characters as the "Pre-Shared Key".

Authentication RADIUS Server: Enter the port (default is 1812), the IP address and the password of external RADIUS server are specified here.

When you finish, click 'save' to save the settings made and restart the router so the settings will take effect after it reboots.

Wireless ACL

The screenshot shows the configuration interface for a Sitecom Wi-Fi Modem Router X3 N300. The page title is "Wi-Fi Modem Router X3 N300" with the Sitecom logo. The navigation bar includes "Home", "Wizard", "Basic Settings", "2.4G WiFi", "Advanced Settings", "Firewall", and "Toolbox", along with a "Language" dropdown. The "Wireless ACL" tab is selected among other wireless settings tabs. The "Wireless Access Control" section contains a form with the following fields: "Wireless SSID" (Sitecom07A69E), "Active" (radio buttons for Enable and Disable, with Disable selected), and "Actions" (a dropdown menu). Below the form are "Submit" and "Cancel" buttons. A "Wlan Filter list" table is shown with columns for Mac, Comment, Edit, and Drop, and an "Add" button below it.

This wireless router supports MAC Address Control, which prevents unauthorized clients from accessing your wireless network.

Active: Choose to either Enable or Disable the Wireless Access Control

Allow: Only allow the wireless clients with the MAC Address you have specified can access to the router.

Deny: The wireless clients with the MAC Address you have specified will be denied accessing to the router.

MAC Address: Enter the MAC Address of the wireless clients for the filtering control.

When you finish, click 'Submit' to save the settings made and restart the router so the settings will take effect after it reboots.

Advanced Wireless

Wi-Fi Modem Router X3 N300



Home | Wizard | Basic Settings | **2.4G WiFi** | Advanced Settings | Firewall | Toolbox | Language ▾

Wireless Settings | Security Settings | Wireless ACL | **Advanced Wireless** | Wireless WDS | Wireless WPS

Wireless Advanced Settings

These settings are only for more technically advanced users who have a sufficient knowledge about wireless LAN. These settings should not be changed unless you know what effect the changes will have on your Access Point.

Transmit Power :	100% ▾
Beacon Interval :	100 (range: 20~1023)
RTS/CTS Threshold :	2346 (range: 1~2347)
Fragment Threshold :	2346 (range: 256~2346, only even numbers)
DTIM :	10 (range: 1~255)
Preamble Type :	short ▾

Save Cancel

This page allows advanced users who have sufficient knowledge of wireless LAN. These setting shall not be changed unless you know exactly what will happen for the changes you made on your router.

Transmit Power: Set the maximum output power of the router. The higher output power, the wider the coverage range is.

Beacon Interval: The interval of time that this wireless router broadcast a beacon. Beacon is used to synchronize the wireless network. The range for the beacon period is between 20 and 1024 with a default value of 100 (milliseconds).

RTS/CTS Threshold: This value should remain at its default setting of 2347. Should you encounter inconsistent data flow, only minor modifications are recommended. If a network packet is smaller than the preset "RTS threshold" size, the RTS/CTS mechanism will not be enabled. The wireless router sends Request to Send (RTS) frames to a particular receiving station and negotiates the sending of a data frame. After receiving an RTS, the wireless station responds with a Clear to Send (CTS) frame to acknowledge the right to begin transmission.

Fragment Threshold: Fragment Threshold specifies the maximum size of packet during the fragmentation of data to be transmitted. If you set this value too low, it will result in bad performance. Enter a value from 256 to 2346.

When you finish, click 'Save' to save the settings made and restart the router so the settings will take effect after it reboots.

Wireless WPS

Wi-Fi Protected Setup (WPS) is the simplest way to establish a connection between the wireless clients and the wireless router. You don't have to select the encryption mode and fill in a long encryption passphrase every time when you try to setup a wireless connection. You only need to press a button on both wireless client and wireless router, and WPS will do the rest for you.

Wi-Fi Modem Router X3 N300



Home | Wizard | Basic Settings | **2.4G WiFi** | Advanced Settings | Firewall | Toolbox | Language ▾

Wireless Settings | Security Settings | Wireless ACL | Advanced Wireless | Wireless WDS | **Wireless WPS**

WPS Settings

This page allows you to change WPS settings, and the WPS condition must be WPA-PSK or WPA2-PSK security mode, and the SSID should be broadcasted.

Wireless SSID : Sitecom07A69E ▾

WPA Mode : WPA2-PSK

WPS Config

Use WPS : Enable Disable

Push Button : PBC

Input PIN Number : PIN

WPS Session Status :

Save Cancel

SSID: This is the network broadcast name (SSID) of the router.

Use WPS: Check the box to enable WPS function and uncheck it to disable the WPS function.

Push Button: Press the button to start the WPS process. The router will wait for the WPS request from the wireless devices within 2 minutes.

Input PIN Number: You can fill-in the PIN code of the wireless device and press the button to start the WPS process. The router will wait for the WPS request from the wireless device within 2 minutes.

Advanced Settings

QoS

Wi-Fi Modem Router X3 N300



Home | Wizard | Basic Settings | 2.4G WiFi | **Advanced Settings** | Firewall | Toolbox

Language ▾

DNS | ADSL Settings | **QoS** | UPnP | Routing | DDNS | MLD | ALG | IP Tunnel | TR-69 | USB Port | DLNA

Quality of Service

Configuration of classification table for IP QoS.

QoS : Enable Disable

QoS Queue

Direction : Uplink(LAN -> WAN) Downstream(WAN -> LAN)

Queue Enable : Enable Disable

Bandwidth : Kbps (0 means no limit bandwidth)

Discipline : WRR Strict Priority

WRR weight : Highest : High : Medium : Low : (sum should be less or equal than 100)

Enable DSCP ReMark :

Enable 802.1p ReMark :

QoS allows you to classify Internet application traffic by source/destination IP address and port number. You can assign priority for each type of application and reserve bandwidth for it. The packets of applications with higher priority will always go first. Lower priority applications will get bandwidth after higher priority applications get enough bandwidth. This can let you have a better experience in using critical real time services like Internet phone, video conference ...etc. All the applications not specified by you are classified as rule name "Others". The rule with a smaller priority number has a higher priority; the rule with a larger priority number has a lower priority. You can adjust the priority of the rules by moving them up or down.

Enable/Disable QoS: You can check "Enable QoS" to enable QoS functionality for the WAN port.

Add a rule: Enter all the data required for the rule you wish to set and click Add to save this rule.

Edit a QoS rule: Select the rule you want to edit and click "Edit", then enter the detail form of the QoS rule. Click "Apply" after editing the form and the rule will be saved.

Discipline: Save allows to save the selected QoS discipline without changing the current rules.

Click 'Add' To save and apply the new rule.

UPnP

Wi-Fi Modem Router X3 N300



Home | Wizard | Basic Settings | 2.4G WiFi | **Advanced Settings** | Firewall | Toolbox

Language ▾

DNS | ADSL Settings | QoS | **UPnP** | Routing | DDNS | MLD | ALG | IP Tunnel | TR-69 | USB Port | DLNA

UPnP Configuration

This page is used to configure UPnP. The system acts as a daemon when you enable it.

UPnP :	<input type="radio"/> Enable <input checked="" type="radio"/> Disable
WAN Connection :	▾
LAN Connection :	▾

Save Cancel

When the UPnP function is enabled, the router can be detected by UPnP compliant system such as Windows 7. The router will be displayed in the Neighborhood of Windows 7, so you can directly double click the router or right click the router and select "Invoke" to configure the router through web browser.

UPnP: Enable or disable UPnP feature.

When you finish, click 'Save' to save the settings made and restart the router so the settings will take effect after it reboots.

Routing

Wi-Fi Modem Router X3 N300



Home | Wizard | Basic Settings | 2.4G WiFi | **Advanced Settings** | Firewall | Toolbox

Language ▾

DNS | ADSL Settings | QoS | UPnP | **Routing** | DDNS | MLD | ALG | IP Tunnel | TR-69 | USB Port | DLNA

Routing Table List

This page displays routing information.

#	Destination	Subnet Mask	Gateway Address	Metric	Device	Use	Edit	Drop
1	192.168.2.0	255.255.255.252	0.0.0.0	0	br0	0		
2	192.168.0.0	255.255.255.0	0.0.0.0	0	br0	0		

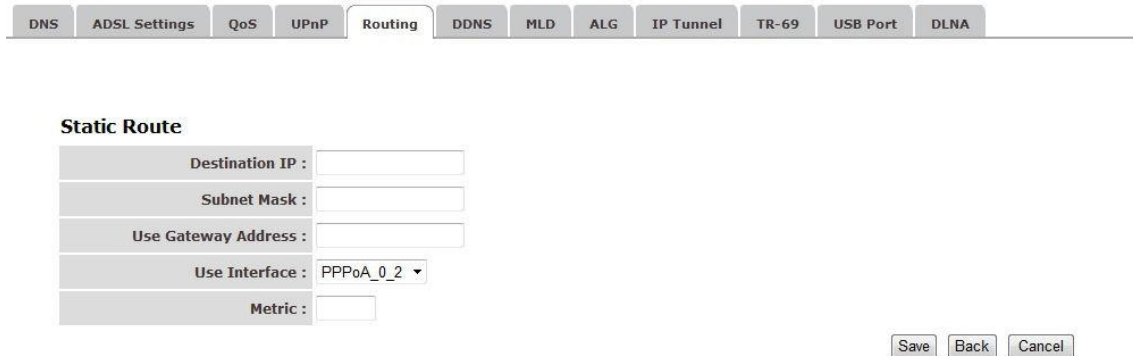
Add Route

The page enables you to define specific route for your Internet and network data.

Most users do not need to define routes. On a typical small home or office LAN, the existing routes that set up the default gateways for your LAN hosts and for the router provide the most appropriate path for all your Internet traffic.

You may need to define routes if your home setup includes two or more networks or subnets, if you connect to two or more ISP services, or if you connect to a remote corporate LAN.

Click 'Add route' to add a self-defined route.



The screenshot shows a web interface with a navigation bar at the top containing the following tabs: DNS, ADSL Settings, QoS, UPnP, Routing (selected), DDNS, MLD, ALG, IP Tunnel, TR-69, USB Port, and DLNA. Below the navigation bar, the 'Static Route' configuration form is displayed. The form consists of five rows, each with a label and an input field:

- Destination IP :
- Subnet Mask :
- Use Gateway Address :
- Use Interface :
- Metric :

At the bottom right of the form, there are three buttons: Save, Back, and Cancel.

Destination IP: The destination can be specified as the IP address of a subnet or a specific host in the subnet. It can also be specified as all zeros to indicate that this route should be used for all destinations for which no other route is defined (this is the route that creates the default gateway).

Subnet Mask: The network mask of the destination subnet. The default gateway uses a mask of 0.0.0.0.

Gateway Address: The Gateway IP that should be used enter an address or select a pvc channel

Metric: Defines the number of hops between network nodes that data packets travel. The default value is 0, which means that the subnet is directly one hop away on the local LAN network.

When you finish, click 'Save' to save the settings and restart the router so the settings will take effect after it reboots.

DDNS

Wi-Fi Modem Router X3 N300



Home | Wizard | Basic Settings | 2.4G WiFi | **Advanced Settings** | Firewall | Toolbox

Language ▾

DNS | ADSL Settings | QoS | UPnP | Routing | **DDNS** | MLD | ALG | IP Tunnel | TR-69 | USB Port | DLNA

Dynamic DNS Configuration

This page is used to configure the Dynamic DNS.

#	Hostname	Username	Service	Interface	Edit	Drop
---	----------	----------	---------	-----------	------	------

Add

Dynamic DNS (DDNS) allows you to map the static domain name to a dynamic IP address. You must get an account, password and your static domain name from the DDNS service providers.

Wi-Fi Modem Router X3 N300



Home | Wizard | Basic Settings | 2.4G WiFi | **Advanced Settings** | Firewall | Toolbox

Language ▾

DNS | ADSL Settings | QoS | UPnP | Routing | **DDNS** | MLD | ALG | IP Tunnel | TR-69 | USB Port | DLNA

DDNS provider :	DynDNS.org ▾
Hostname :	<input type="text"/>
Interface :	PPPoA_0_2 ▾
Username :	<input type="text"/>
Password :	<input type="password"/>

Apply Back Cancel

DDNS Provider: Select your DDNS service provider here.

Host Name: Enter the domain name you've obtained from DDNS service provider.

Username: Enter the username assigned by the DDNS service provider.

Password: Enter the password assigned by the DDNS service provider.

When you finish, click 'Save' to save the settings made and restart the router so the settings will take effect after it reboots.

Wi-Fi Modem Router X3 N300



Home | Wizard | Basic Settings | 2.4G WiFi | **Advanced Settings** | Firewall | Toolbox |

Language ▾

DNS | ADSL Settings | QoS | UPnP | Routing | DDNS | MLD | ALG | IP Tunnel | **TR-69** | USB Port | DLNA

CWMP Setup

This page is used to configure TR-069.

CWMP : Enable Disable

ACS Login Information

URL :

Username :

Password :

Connection Request Information

Connection Request Authentication :

Username :

Password :

Periodic Inform Config

Periodic Inform : Enable Disable

Interval : (10-4294967295)

www.sitecom.com | © 1996 - 2012 Sitecom Europe BV, all rights reserved

As a bidirectional SOAP/HTTP-based protocol, it provides the communication between customer-premises equipment (CPE) and Auto Configuration Servers (ACS). It includes both a safe auto configuration and the control of other CPE management functions within an integrated framework. In the course of the boom of the broadband market, the number of different Internet access possibilities grew as well (e.g. modems, routers, gateways, set-top box, VoIP-phones). At the same time the configuration of this equipment became more complicated -- too complicated for the end-users. For this reason the TR-069 standard was developed. It provides the possibility of auto configuration of these access types. The technical specifications are managed and published by the Broadband Forum. Using TR-069, the terminals can get in contact with the Auto Configuration Servers (ACS) and establish the configuration automatically. Accordingly other service functions can be provided. TR-069 is the current standard for activation of terminals in the range of DSL broadband market.

Firewall

The Broadband router provides extensive firewall protection by restricting connection parameters, thus limiting the risk of hacker attacks, and defending against a wide array of common Internet attacks. However, for applications that require unrestricted access to the Internet, you can configure a specific client/server as a Demilitarized Zone (DMZ).

ACL

Wi-Fi Modem Router X3 N300



Home | Wizard | Basic Settings | 2.4G WiFi | Advanced Settings | **Firewall** | Toolbox

Language ▾

ACL | IPv4 Filter | IPv6 Filter | URL Filter | MAC Filter | DMZ | DoS | Virtual Server | Port Triggering

ACL Configuration

This page is used to configure the IP Address for Access Control List. If ACL is enabled, only these IP address that in the ACL Table can access CPE. Here you can add/delete IP Address.

Interface : PPPoA_0_2 ▾

ACL Table

Service	Enable	Source IP Address	Source Mask Address	Protocol	Destination Port
HTTP	<input type="checkbox"/>	0.0.0.0	0.0.0.0	TCP	80
ICMP	<input checked="" type="checkbox"/>	0.0.0.0	0.0.0.0	ICMP	0
SNMP	<input checked="" type="checkbox"/>	0.0.0.0	0.0.0.0	UDP	161
SSH	<input type="checkbox"/>	0.0.0.0	0.0.0.0	TCP	22
TELNET	<input type="checkbox"/>	0.0.0.0	0.0.0.0	TCP	23
TFTP	<input type="checkbox"/>	0.0.0.0	0.0.0.0	UDP	69
DNS	<input checked="" type="checkbox"/>	0.0.0.0	0.0.0.0	UDP	53

This page is used to IP addresses for Access Control. If ACL is enabled only the IP Addresses that are in the ACL Table can access the CPE.

IP Filter

Wi-Fi Modem Router X3 N300



Home | Wizard | Basic Settings | 2.4G WiFi | Advanced Settings | **Firewall** | Toolbox

Language ▾

ACL | **IPv4 Filter** | IPv6 Filter | URL Filter | MAC Filter | DMZ | DoS | Virtual Server | Port Triggering

IPv4 Filter Configuration

Use this page to configure a filter that allows or blocks IPv4 network traffic that matches a specified address or protocol.(WARNING: If you enabled SPI, all traffic initiated from WAN will be blocked. Including REMOTE ACL INPUT.)

Enable IP Filter :	<input checked="" type="checkbox"/>
Enable SPI :	<input checked="" type="checkbox"/>
Security Level :	Low ▾

Filter Model

WAN → LAN :	<input type="radio"/> White	<input checked="" type="radio"/> Black
LAN → WAN :	<input type="radio"/> White	<input checked="" type="radio"/> Black

Submit Refresh

Click "Add a rule" to add a filtering rule.

ACL | **IPv4 Filter** | IPv6 Filter | URL Filter | MAC Filter | DMZ | DoS | Virtual Server | Port Triggering

IP Filter Configuration

Connection :	PPPoA_0_2 ▾
Enable :	<input checked="" type="checkbox"/>
Protocol :	TCP ▾
Source IP :	<input type="text"/>
Source Mask :	<input type="text"/>
Source Port :	<input type="text"/> - <input type="text"/>
Destination IP :	<input type="text"/>
Destination Mask :	<input type="text"/>
Destination Port :	<input type="text"/> - <input type="text"/>
Description :	<input type="text"/>

Submit Refresh

Enable: Select to enable IP filter rule.

Source IP: The source IP address or range of packets to be monitored.

Subnet Mask: It is the destination IP addresses based on above destination subnet IP

Source Port: This Port or Port Ranges defines the port allowed to be used by the Remote/WAN to connect to the application. Default is set from range 0 ~ 65535. It is recommended that this option be configured by an advanced user.

Destination IP: This is the destination subnet IP address.

Subnet Mask: It is the destination IP addresses based on above destination subnet IP

Destination Port: This is the Port or Port Ranges that defines the application.

When you finish, click 'Submit' to save the settings made.

IP Filter Listing

ACL IPv4 Filter IPv6 Filter URL Filter MAC Filter DMZ DoS Virtual Server Port Triggering

IPv4 Filter Configuration

Use this page to configure a filter that allows or blocks IPv4 network traffic that matches a specified address or protocol.(WARNING: If you enabled SPI, all traffic initiated from WAN will be blocked. Including REMOTE ACL INPUT.)

Enable IP Filter :

Enable SPI :

Security Level : Low ▾

Filter Model

WAN → LAN : White Black

LAN → WAN : White Black

Add IP filter rules :

Choose : WAN → LAN ▾

#	Enable	IP/Port(source)	IP/Port (destination)	Protocol	Description	Device Name	Edit	Drop
---	--------	-----------------	-----------------------	----------	-------------	-------------	------	------

#: Item number.

Enable: Whether the connection is currently active.

Src IP Mask: The source IP address or range of packets to be monitored.

Dest IP Mask: This is the destination subnet IP address.

Protocol: It is the packet protocol type used by the application, select either TCP or UDP or ICMP

Src port: This Port or Port Ranges defines the port allowed to be used by the Remote/WAN to connect to the application. Default is set from range 0 ~ 65535. It is recommended that this option be configured by an advanced user.

Dest Port: This is the Port or Port Ranges that defines the application.

URL Filter

Here it's possible to block certain websites.

Wi-Fi Modem Router X3 N300



Home | Wizard | Basic Settings | 2.4G WiFi | Advanced Settings | **Firewall** | Toolbox

Language ▾

ACL | IPv4 Filter | IPv6 Filter | **URL Filter** | MAC Filter | DMZ | DoS | Virtual Server | Port Triggering

URL Filter

This page allows you to block websites. If enabled, the websites listed here will be denied access to clients trying to browse that website.

Block Website

#	URL	Schedule	Edit	Drop
<input type="button" value="Add"/>				

Enter the website you wish to block and make sure the rule is active.

Click 'Save' to apply the new rule.

DMZ

Wi-Fi Modem Router X3 N300



Home | Wizard | Basic Settings | 2.4G WiFi | Advanced Settings | **Firewall** | Toolbox

Language ▾

ACL | IPv4 Filter | IPv6 Filter | URL Filter | MAC Filter | **DMZ** | DoS | Virtual Server | Port Triggering

DMZ

A Demilitarized Zone is used to provide Internet services without sacrificing unauthorized access to its local private network. Typically, the DMZ host contains devices accessible to Internet traffic, such as Web (HTTP) servers, FTP servers, SMTP (e-mail) servers and DNS servers.

DMZ setting for : PPPoA_0_2 ▾

DMZ : Enable Disable

DMZ Host IP Address :

The DMZ Host is a local computer exposed to the Internet. When setting a particular internal IP Address as the DMZ Host, all incoming packets will be checked by the firewall and NAT algorithms then passed to the DMZ Host.

Enable DMZ and enter the IP address for which you want unrestricted access to the internet in the DMZ Host IP address. Click Apply to save and apply the settings.

Virtual Server

Use the Virtual Server function when you want different servers/clients in your LAN to handle different service/Internet application type (e.g. Email, FTP, Web server etc.) from the Internet. Computers use numbers called port numbers to recognize a particular service/Internet application type. The Virtual Server allows you to re-direct a particular service port number (from the Internet/WAN Port) to a particular LAN private IP address and its service port number.

Wi-Fi Modem Router X3 N300



Home | Wizard | Basic Settings | 2.4G WiFi | Advanced Settings | **Firewall** | Toolbox | Language

ACL | IPv4 Filter | IPv6 Filter | URL Filter | MAC Filter | DMZ | DoS | **Virtual Server** | Port Triggering

Virtual Server

Virtual Server allows you to direct incoming traffic from the WAN side (identified by protocol and external port) to the internal server with a private IP address on the LAN side. The internal port is required only if the external port needs to be converted to a different port number used by the server on the LAN side. A maximum of 16 entries can be configured.

Virtual Server Listing

Server Name	Wan Connection	External Port Start/End	Protocol	Internal Port Start/End	Server IP Address	Schedule Rule	Remote IP	Edit	Drop
<input type="button" value="Add"/>									

Virtual Server Listing

Server Name	Wan Connection	External Port Start/End	Protocol	Internal Port Start/End	Server IP Address	Schedule Rule	Remote IP	Edit	Drop
<input type="button" value="Add"/>									

Add Virtual Server Rule(s)

WAN Connection(s) : PPPoA_0_2

Server Name :

Schedule : Always

Server IP Address(Host Name) : 192.168.0.

External Port Start	External Port End	Protocol	Internal Port Start	Internal Port End	Remote Ip
<input type="text"/>	<input type="text"/>	TCP	<input type="text"/>	<input type="text"/>	<input type="text"/>
<input type="text"/>	<input type="text"/>	TCP	<input type="text"/>	<input type="text"/>	<input type="text"/>
<input type="text"/>	<input type="text"/>	TCP	<input type="text"/>	<input type="text"/>	<input type="text"/>
<input type="text"/>	<input type="text"/>	TCP	<input type="text"/>	<input type="text"/>	<input type="text"/>
<input type="text"/>	<input type="text"/>	TCP	<input type="text"/>	<input type="text"/>	<input type="text"/>
<input type="text"/>	<input type="text"/>	TCP	<input type="text"/>	<input type="text"/>	<input type="text"/>
<input type="text"/>	<input type="text"/>	TCP	<input type="text"/>	<input type="text"/>	<input type="text"/>
<input type="text"/>	<input type="text"/>	TCP	<input type="text"/>	<input type="text"/>	<input type="text"/>
<input type="text"/>	<input type="text"/>	TCP	<input type="text"/>	<input type="text"/>	<input type="text"/>
<input type="text"/>	<input type="text"/>	TCP	<input type="text"/>	<input type="text"/>	<input type="text"/>
<input type="text"/>	<input type="text"/>	TCP	<input type="text"/>	<input type="text"/>	<input type="text"/>

Server Name: Assign a name to the virtual server.

Server IP: This is the LAN client/host IP address that the Public Port number packet will be sent to.

External/Internal Port Start: Here the starting port number must be entered.

External/Internal Port End: Here the end port number must be entered

Note : The ports from the start port till the End port will be opened

Click 'Apply' for the changes to take effect.

TOOLBOX

Password

You can change the password required to log into the router's system web-based management. Passwords can contain 0 to 12 alphanumeric characters, and are case sensitive.



Password settings

This page is used to set the account to access the web server of ADSL Router. Empty user name and password will disable the protection.

Username :	<input type="text" value="admin"/>
Old Password :	<input type="password"/>
New Password :	<input type="password"/>
Confirmed Password :	<input type="password"/>

Old Password: Fill in the current password to allow changing to a new password.

New Password: Enter your new password.

Confirmed Password: Enter your new password again for verification purposes.

Click **Apply** at the bottom of the screen to save the above configuration.

Time Settings

The Time Zone allows your router to set its time; especially for recording System Log.

Wi-Fi Modem Router X3 N300



Home | Wizard | Basic Settings | 2.4G WiFi | Advanced Settings | Firewall | **Toolbox**

Language ▾

Sitecom Cloud Security | Password | Ping | **Time Settings** | Firmware | Reboot | System Log

Time Zone Setting

You can maintain the system time by synchronizing with a public time server over the Internet.

Current Time : 1970-01-01 02:04(Can't find NTP server)

Time Synchronization

Synchronize time with : NTP Server automatically
 PC 's Clock
 Manually

NTP time server :

Time Zone Select :

Automatically adjust clock for daylight saving changes

Enable :

Start time : / - 2012 / : (Month/Date/Year-Hour:Minute)

Current Time: The current time of the specified time zone. You can set the current time by yourself or configure by NTP server.

NTP server: The IP address or the host name of the NTP server. You can select from the list or set it manually.

Time Zone Select: Select the time zone of the country you are currently in. The router will set its time based on your selection.

When you finish, click 'Save'.so the settings will take effect after it reboots.

Firmware Upgrade

Wi-Fi Modem Router X3 N300



Home | Wizard | Basic Settings | 2.4G WiFi | Advanced Settings | Firewall | **Toolbox**

Language ▾

Sitecom Cloud Security | Password | Ping | Time Settings | **Firmware** | Reboot | System Log

Automatic Firmware Upgrade Setting

On this options you can setting enable/disable the automatic firmware upgrade function.

Automatic upgrade : Enable Disable

Save Cancel

Firmware upgrade

On this options you can upgrade the routers firmware to a newere version (when available).

New Firmware Location : Browse...

Clear Config :

Upgrade Firmware

Enable Automatic firmware update: When enabled the router will check for updates on the firmware if an updated firmware has been released the router will inform you that a newer firmware is available and offers to download and install the firmware.

This page also allows you to manually upgrade the firmware for the router. Click the "Browse" button to select the firmware file and click the "Upgrade Firmware" button to start upgrading.

IMPORTANT! Do not turn off your router while this procedure is in progress.

Reboot

Wi-Fi Modem Router X3 N300



Home | Wizard | Basic Settings | 2.4G WiFi | Advanced Settings | Firewall | **Toolbox**

Language ▾

Sitecom Cloud Security | Password | Ping | Time Settings | Firmware | **Reboot** | System Log

System Restart

This page is used to apply changes to system memory and reboot the router, or reset to factory defaults.

System Restart with : Current Settings Factory Default Settings

RESTART

Whenever you use the Web configuration to change system settings, the changes are initially placed in temporary storage. To save your change for future use, you have to click "Apply" to reboot the router. If you have encountered problems during the configuration, you can click the "OPS" button in the top panel of the router over 15 seconds to reset default settings.

Addendum: Declaration of Conformity

Sitecom Europe BV

EC Declaration of Conformity

We
Sitecom Europe BV
Linatebaan 101
3045 AH Rotterdam
The Netherlands

Hereby declare under our sole responsibility that the Sitecom product:

Product number: WLM-2600 v1 001
Product description: Wi-Fi Modem Router N300

To which this declaration relates is in conformity with the requirements of the following standards:

CE/LVD
· EN 60950-1: 2006+A11 (2009)

CE/EMC
· EN 301 489-1 V1.8.1
· EN 301 489-17 V2.1.1

RADIO SPECTRUM
· EN 300 328 V1.7.1 2006-10
· EN 50385 2002

This certifies that the following designated Sitecom product:

Product description: Wi-Fi Modem Router N300
Product No.: WLM-2600 v1 001

Complies with the requirements of the following directives and carries the CE marking accordingly:
R&TTE Directive 99/5/EC, EMC directive 2004/95/EC and Low Voltage Directive 2006/95/EC.
This declaration is the responsibility of the manufacturer / importer:

Sitecom Europe B.V.
Rotterdam, 22 October 2012

M. Bergwerff,



COO

UK CE COMPLIANCE

Hereby Sitecom Europe BV declares that this product is in accordance with essential requirements and other relevant terms of the European regulation 1999/5/EC.

FR CONFORMITE CE

Par la présente Sitecom Europe BV, déclare que l'appareil est conforme aux exigences essentielles et aux dispositions pertinentes de la Directive Européenne 1999/5/EC.

DE CE-KONFORMITÄT

Hiermit erklärt Sitecom Europe BV, dass dieses Produkt die erforderlichen Voraussetzungen und andere relevante Konditionen der europäischen Richtlinie 1999/5/EC erfüllt.

IT CONFORMITA ALLE NORME CE

Con la presente Sitecom Europe BV dichiara che questo prodotto è conforme ai requisiti essenziali e agli altri termini rilevanti della Direttiva Europea 1999/5/EC.

NL CE GOEDKEURING

Hierbij verklaart Sitecom Europe BV dat dit product in overeenstemming is met de essentiële eisen en andere relevante bepalingen van Europese Richtlijn 1999/5/EC.

ES CONFORMIDAD CON LA CE

Por la presente Sitecom Europe BV declara que este producto cumple con los requisitos esenciales y las otras provisiones relevantes de la Directiva Europea 1999/5/EC.

PT CONFORMIDADE CE

Pela presente a Sitecom Europe BV declara que este produto está em conformidade com os requisitos essenciais e outras condições relevantes da regulamentação Europeia 1999/5/EC.

SE CE-FÖRSÄKRAN

Härmed försäkras Sitecom Europe BV att denna produkt uppfyller de nödvändiga kraven och andra relevanta villkor EU-direktivet 1999/5/EC.

DK OVERENSSTEMMELSESERKLÆRING

Sitecom Europe BV bekræfter hermed, at dette produkt er i overensstemmelse med de avgjørende kravene og andre betingelser i henhold til Rådets direktiv 1999/5/EC.

NO CE-OVERENSSTEMMELSE

Sitecom Europe BV erklærer herved at dette produktet er i overensstemmelse med de avgjørende kravene og andre relevante vilkår i den europeiske forskriften 1999/5/EC.

FI CE-HYVÄKSYNTÄ

Täten Sitecom Europe BV ilmoittaa, että tämä tuote on yhdenmukainen direktiivin 1999/5/EC olennaisten vaatimusten ja muiden asiaankuuluvien sopimusehtojen kanssa.

RU СООТВЕТСТВИЕ ТРЕБОВАНИЯМ CE

Настоящим компания Sitecom Europe BV заявляет, что ее продукция соответствует основным требованиям и условиям Европейской Директивы 1999/5/EC.

PL CERTYFIKAT ZGODNOŚCI CE

Sitecom Europe BV niniejszym oświadczam, że ten produkt spełnia wszelkie niezbędne wymogi, a także inne istotne warunki dyrektywy europejskiej 1999/5/WE.

GR ΣΥΜΜΟΡΦΩΣΗ ΜΕ CE

Η Sitecom Europe BV δηλώνει, διά του παρόντος, ότι αυτό το προϊόν συμμορφώνεται με τις ουσιαστικές απαιτήσεις και τους λοιπούς όρους του ευρωπαϊκού κανονισμού 1999/5/EC.



This product may be used in the following countries:



For non EU countries please check with the local authorities for restrictions of using wireless products