



ORINST. AE 128 SUSAS, IRAN. A  
COMPLETE VIEW OF THE SITE, LOOKING  
APPROXIMATELY NORTH.

A1



611

ORINST. AE 125 SUSI, IRAN. VIEW  
LOOKING APPROXIMATELY NORTH, TAKEN  
FROM AN ALTITUDE OF 534 METERS ON  
OCTOBER 23, 1935. NOTE THE "TOMB  
OF DANIEL" CENTER LEFT ON A BRANCH  
OF THE SAIMARRAH RIVER.

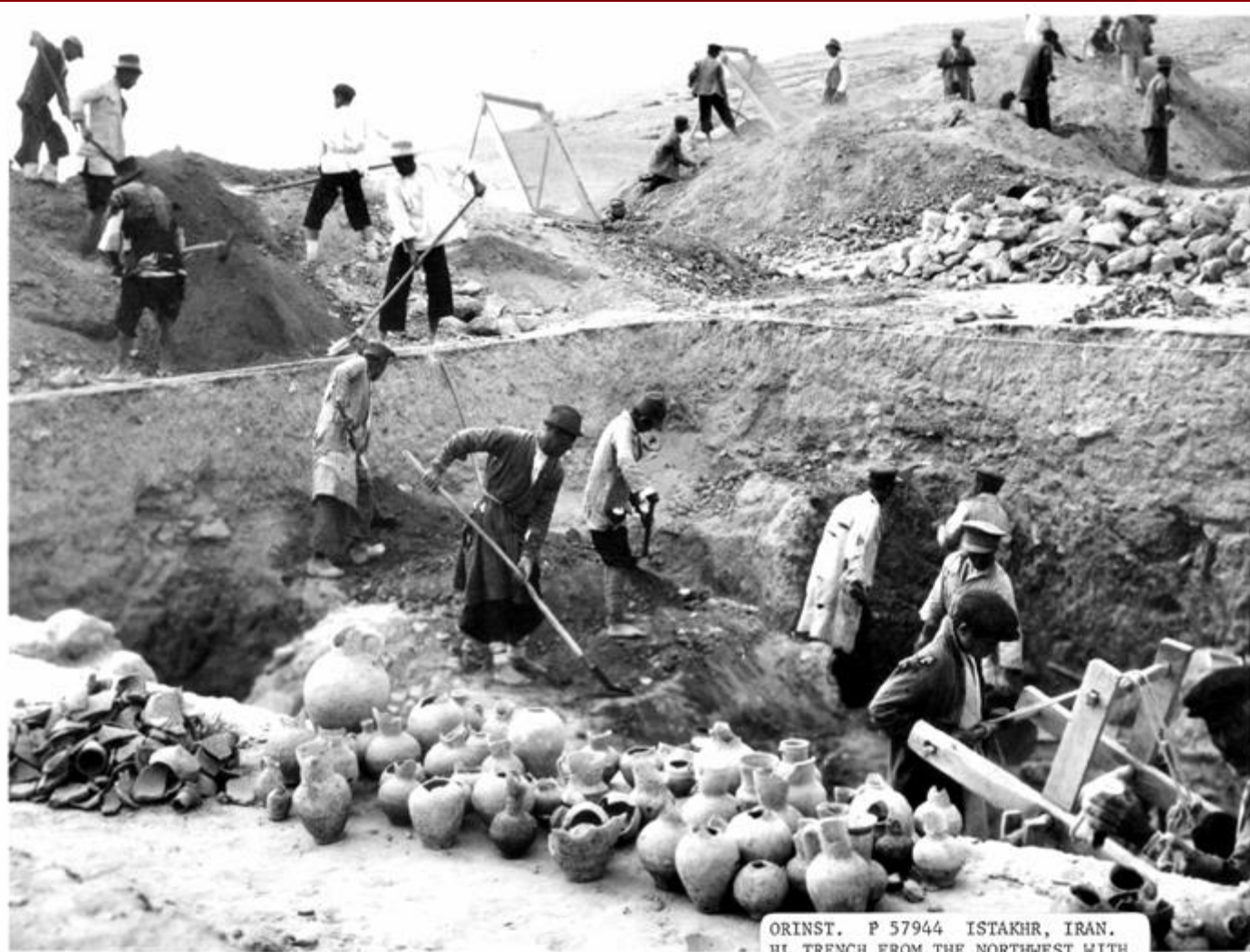


ORINST. AE 129 SUSA, IRAN. THE  
WEST MOUND, LOOKING APPROXIMATELY  
NORTHEAST.

A2



ORINST. AE 130 SUSAS, IRAN. THE WEST MOUND WITH THE FRENCH EXPEDITION FORT IN THE BACKGROUND AND THE VILLAGE OF SHUSH IN THE FOREGROUND.



ORINST. P 57944 ISTAKHR, IRAN.  
HL TRENCH FROM THE NORTHWEST WITH  
EXCAVATED ISLAMIC VESSELS IN THE  
FOREGROUND.





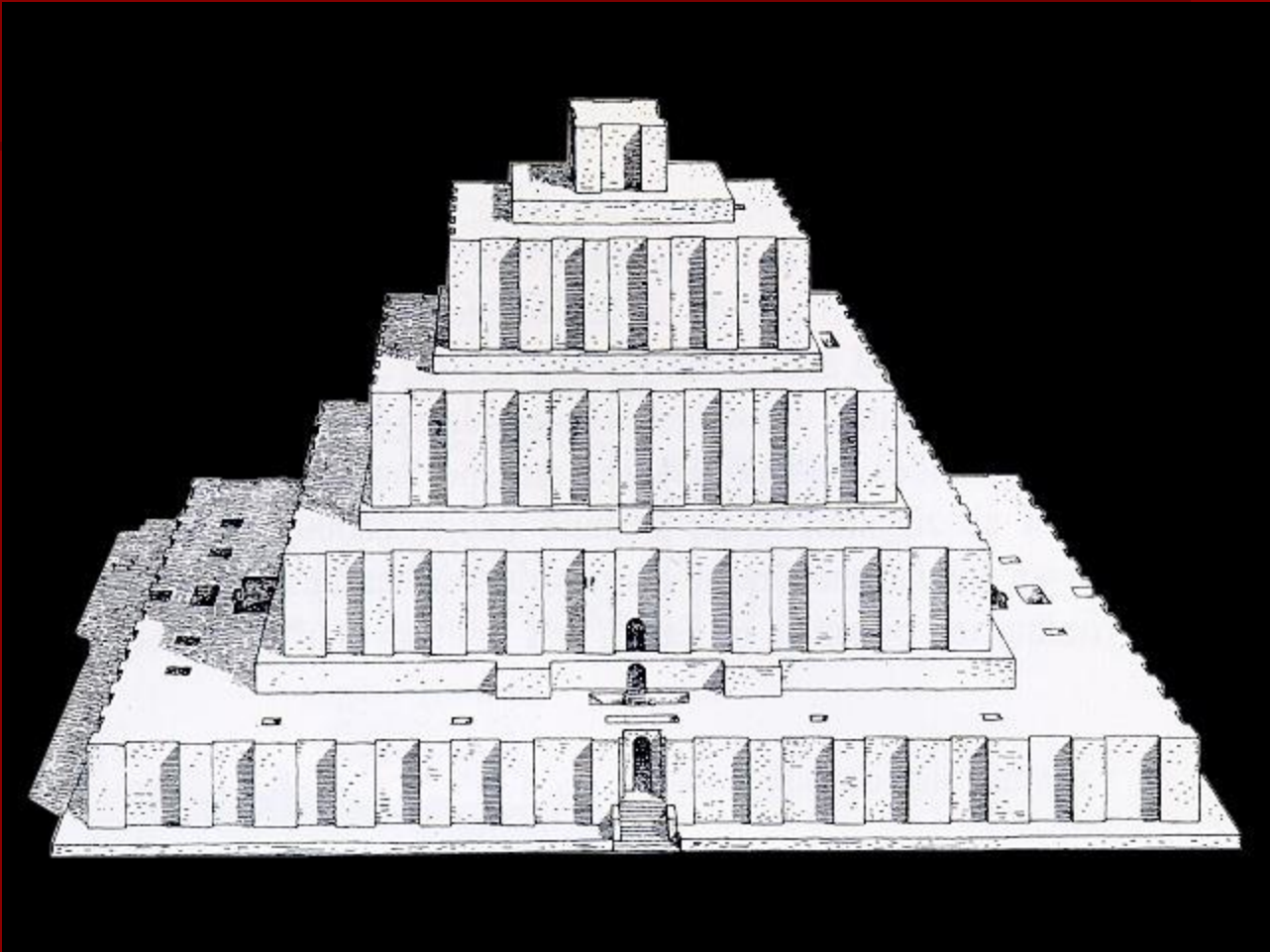


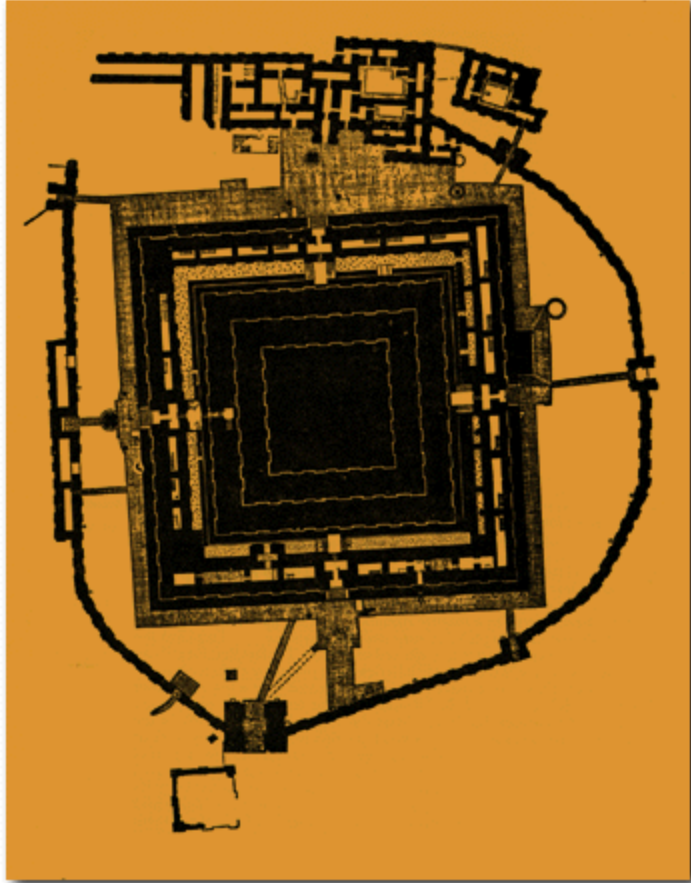




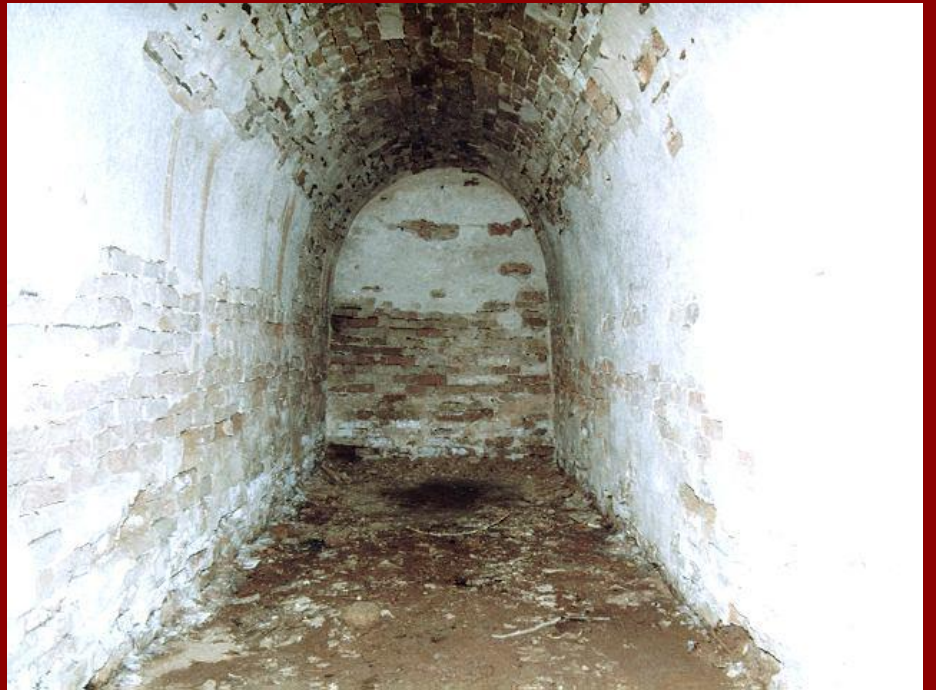


















ORINST. P 57368 NAQSH-I-RUSTAM,  
IRAN. REMNANTS OF PRE-ACHAEMENID  
RELIEF EAST OF THE RELIEF OF  
BAHRAM II AND COURT.











